

Naval Facilities Engineering Command

200 Stovall Street

Alexandria, Virginia 22332-2300

APPROVED FOR PUBLIC RELEASE



Inspection, Maintenance and Procurement Procedures for **Wood Poles**

NAVFAC MO-312.3

September 1992

SNDL DISTRIBUTION

(25 Copies each):

FKA1C COMNAVFACENGCOM

FM1 EFDs

(10 Copies each):

FA46 PWCLANT

FKP7 NAVSHIPYDs

FB54 PWCPAC

FT104 PWCCNET

HQ U.S. AIR FORCE

U.S. ARMY

Engineering And Services Center

Office Chief of Engineers

Tyndall AFB, FL 32403

Washington, D.C. 20314 (DAEN-MPO)

(2 Copies each):

E3A LABONR

FKM12 NAVPETOFF

FA6 NASLANT

FKM13 SPCC

FA7 NAVSTALANT

FKM15 ASO

FA10 SUBASELANT

FKN2 CBCs

FA18 NAVPHIBASELANT

FKN3 OICCs

FA24 COMNAVBASELANT

FKN7 NEESA

FA47 HOSPLANT

FKN10 NAVSUPPFAC

FB7 NASPAC

FKN11 NAVCIVENGRLAB

FB10 NAVSTAPAC

FKP1B WPNSTAs

FB13 SUBASEPAC

FKP1J NAVORDSTAs

FB21 NAVPHIBASEPAC

FKP16 NAVSSES

FB28 COMNAVBASEPAC

FKQ6A NAVAIRDEVCEEN

FB30 NAVSHIPREPFAC

FKQ6G NUSC

FB36 NAVFACPAC

FKR1A NAS

FB45 TRIREFFACPAC

FKR1B NAVAVNDEPOT

FB58 HOSPPAC

FKR3A NAVAIENGCEEN

FC3 COMNAVACTEUR

FKR5 NAVAVIONICCEEN

FC5 NAVSUPACTEUR

FR3 NASRESFOR

FC7 NAVSTAEUR

FR4 NAP

FC14 NASEUR

FT6 NASCNET

FC17 NAVALHOSP

FT9 NAVAVMUSEUM

FD4 OCEANCEN

FT13 NATTC

FF1 COMNAVDIST Washington, DC

FT28 NETC

FF3 NAVSTACNO

FT31 NTC

FF6 NAVOBSY

FT37 NAVSCOLCECOFF

FF32 FLDSUPPACT

FT38 NAVSUBTRACENPAC

FF38 USNA

FT39 NAVTECHTRACEN

FF42 NAVPGSCOL

FT55 NAVSCSCOL

FG2 NAVCOKMSTA

FT108 NAVALHOSP

FG3 COMMUNICATIONUNIT

V3 COMCAB

FJA4 NAVAL HOME

V4 MCAF

FKA8F5 SUBASE

V5 MCAS

FKM9 NSC

V16 CG MCB

V23 CG MCLB

Additional Copies may be obtained from:

Naval Publications and Forms Center
5801 Tabor Avenue
Philadelphia, PA 19120

FOREWORD

The Navy has a multi-billion dollar investment in wooden structures and in utilities. Wood is a readily available, inexpensive natural resource that is both a versatile and useful construction material. The usefulness of wood is increased when it is protected against deteriorating agents by pressure treatment with preservatives. This handbook provides information which will help insure that Navy personnel are able to specify and receive preservative treated wood products most suitable for a particular end use. Specifically this handbook covers wood as a construction material, wood deterioration, preservation of new wood products, quality control or how to specify and inspect treated wood products, as well as inspection and maintenance of treated wood products and remedial control.

Additional information or suggestions that will improve this handbook are invited and should be submitted through appropriate channels to the Naval Facilities Engineering Command, (Attention: Code 1632), 200 Stovall Street, Alexandria, VA 22332-2300.

This publication has been reviewed in accordance with the Secretary of the Navy Instruction 5600.16A and is certified as an official publication of the Naval Facilities Engineering Command.

A handwritten signature in black ink, appearing to read "ER Hamm".

E. R. HAMM
CAPTAIN, CEC, U.S. Navy
Assistant Commander for
Public Works Centers and Departments

ABSTRACT

This publication provides information which will help ensure that Navy personnel are able to specify and receive preservative treated wood products most suitable for a particular end use and ensure that maximum service life is achieved. Specifically this handbook covers wood deterioration, preservative treatments for new wood products, procurement specifications, inspection and quality control for new treated wood products, inspection of wood products in service, maintenance of treated wood products and remedial control against wood destroying organisms.

CHANGE CONTROL SHEET

Document all changes, page replacements, and pen and ink alterations posted in this manual.

AMENDMENT NUMBER	AMENDMENT DATE	POST DATE	POSTED BY (LAST NAME)

Table of Contents

INSPECTION, MAINTENANCE, AND PROCUREMENT PROCEDURES FOR WOOD POLES	1
1.0 INTRODUCTION	1
2.0 PESTICIDES (WOOD PRESERVATIVES)	1
3.0 WOOD POLE INSPECTION AND MAINTENANCE PROCEDURES	2
3.1 Introduction	2
3.2 Visual Decay Detection	4
3.3 Inspection & Maintenance Procedures for Wood Poles	7
3.3.1 Internal Decay	7
3.3.2 External Surface Decay	7
3.3.3 Insects	7
3.3.4 Inspection Procedures	7
4.0 REMEDIAL TREATMENTS	13
4.1 Superficial Preservative Treatments	13
4.2 Groundline or Bandage Treatment	14
4.3 Internal Void Treatment	15
4.4 Fumigant Treatment	15
5.0 POLE TOP PROTECTION	17
6.0 POLE STRENGTH RESTORATION	17
7.0 PRESSURE PRESERVATIVE TREATMENTS	18
7.1 Introduction	18
7.2 Incising	18
7.2.1 Background	18
7.3 Enhanced Preservative Treatments	21
8.0 POLE PERFORMANCE EVALUATION (IN-SERVICE)	21

9.0 QUALITY ASSURANCE FOR NEW PRODUCTS	22
9.1 Introduction	22
9.2 Certificates of Compliance	22
9.3 Quality Assurance Guidance	23
9.4 Plant Inspection	23
9.5 Branding or Marking	23
9.5.1 Background	23
9.5.2 Requirements	23
9.5.3 General Inspection Procedures	24
10.0 TECHNICAL PROCUREMENT REVIEW	27
11.0 CARE AND HANDLING OF TREATED WOOD PRODUCTS	27
11.1 Introduction	27
11.2 Machining and Cutting	27
12.0 HANDLING AND STORAGE	28
13.0 TECHNICAL ASSISTANCE	28
13.1 General	28
14.0 REFERENCE GUIDES	28
15.0 RECORD KEEPING REQUIREMENTS	29
15.1 Background	29
15.2 Discussion	29
APPENDIX A List of Applied Biologists	A-1
APPENDIX B Treatment Specification (Ultra-High Preservative Loaded Wood Poles For Use in Hostile Environments)	B-1
APPENDIX C List of Suppliers	C-1
Index	Index-1

Figure No.	Title	Page
1	Metal Support Sleeve	3
2	Decay Fungus Fruiting Body	5
3	Moisture Meter Suitable for Inspection Work	6
4	Increment Borers	10
5	Shell Thickness Indicator	11
6	Pole Restoration Using Epoxy Resins, Fibers, and Fillers	19
7	Incising to Enhance Preservative Treatment	20
8	Typical Inspection Agency “In-The-White” Hammer Stamp Mark Placed on Pole Tip	25
9	Typical Inspector/Agency Preservative Treatment Inspection Mark Placed on Pole Butt	26

INSPECTION, MAINTENANCE, AND PROCUREMENT PROCEDURES FOR WOOD POLES

1.0 INTRODUCTION. Wood is one of our most valuable natural resources. Inexpensive, readily available and versatile, wood has become an important construction material. Wood's usefulness is greatly increased when it is protected against deteriorating agents by pressure treatment with preservatives and followed with supplemental in-place maintenance procedures which will further increase the service life of wood.

Despite what most people think, wood doesn't just naturally decay. It is deteriorated by wood-destroying organisms. The principal agents responsible for the biodeterioration of wood components are Decay Fungi. These fungi require a certain combination of circumstances in order to flourish. One such circumstance is moisture. Wood containing a moisture level at or above the fiber saturation point, that is, above about 30% moisture, is subject to decay and subsequent serious loss in strength. Wood that remains dry, however, will not be colonized by decay fungi. Quality preservative treatment of wood poles is essential in preventing deterioration caused by wood-destroying organisms.

Antenna, distribution and transmission poles at Navy installations constitute a significant monetary investment, especially when considering the expense of replacing structurally failed components. It is vitally important to recognize the potential for wood component failures, the need for a thorough inspection to determine planned replacement requirements versus replacement upon failure; and the possible need to employ state-of-the-art in-place wood protection systems to retard biodeterioration. Such planning and scrutiny will greatly enhance the service life of wood poles.

This handbook provides information that will help Navy personnel to specify and receive preservative treated poles which best meet end use requirements. Specifically this handbook covers wood deterioration, preservative treatments for new poles, procurement specifications, inspection and quality control procedures, inspection of wood poles in service and maintenance of poles in service including remedial measures for controlling deterioration caused by biological organisms.

2.0 PESTICIDES (WOOD PRESERVATIVES). Wood preservatives are classified by the Federal Insecticide, Fungicide and Rodenticide Act

(FIFRA) as pesticides. Only Environmental Protection Agency (EPA) registered materials are approved for use; all recommendations made are based on this requirement. OPNAVINST 6250.4A requires that all pesticide usage, contractor or in-house, be reported on NAV-FACENCOM Form 6250/2 (in-door applications) or 6250/3 (out-door applications).

NOTE: It is important to remember - only EPA, DOD or State (contractors) certified pesticide applicators are permitted to apply wood preservatives termiticides, herbicides, or conduct fumigation operations on Navy activities.

Safety is always an important consideration when handling preservative-treated wood. Users of preservative-treated wood should carefully follow the safety precautions outlined in the Consumer Information Sheet (CIS) and Material Safety Data Sheet (MSDS) supplied by most pesticide formulators. For additional information users should contact the cognizant EFD Applied Biologist [See Appendix (A)] or local Industrial Hygienist.

Wood preservative chemicals bind tightly to the wood fibers and when handled properly pose little health risk. Individuals should wear long sleeve shirts, coveralls and chemical resistant work gloves when handling treated wood products to avoid prolonged or repeated skin contact. When cutting, drilling or machining treated wood products, a dust respirator should be worn to avoid inhalation of sawdust. The amount of dust and associated preservative chemical inhaled can be significant if an individual is not properly protected.

3.0 WOOD POLE INSPECTION AND MAINTENANCE PROCEDURES.

3.1 Introduction. Periodic and thorough inspections of wood poles is vital for maximizing service life and determining requirements for repair, modification or upgrading. Inspections provide knowledge of the component, loadings to which it is subjected, quality of materials involved, condition, and effectiveness of fasteners and other hardware. All must be known in order to evaluate the ability of a structure or its components to perform its intended function, and to determine necessary maintenance procedures for improving performance.

Poles exposed to wetting can decay when water remains in contact with them or when rapid drying is restricted. Steel support sleeves [Figure (1)] lacking base drain hole is a good example. Periodic retreatment of such poles will significantly increase service life. Decay can typically be found where seasoning checks or bolt holes have exposed untreated wood found beneath the treated shell.

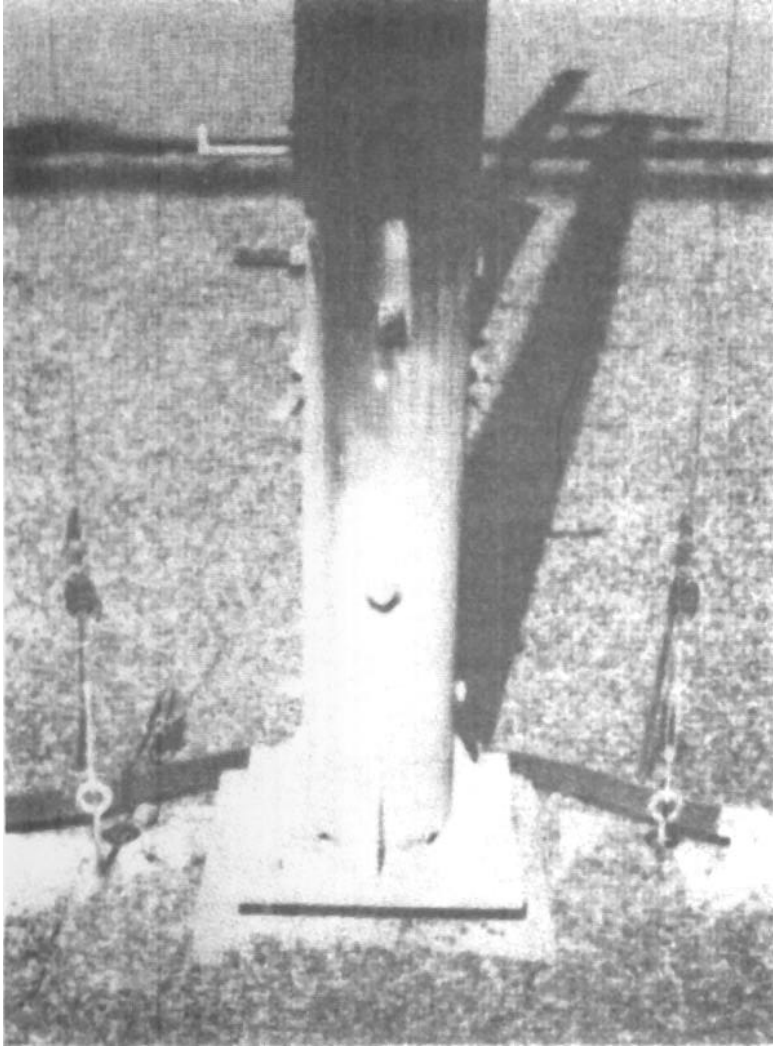


Figure 1
Metal Support Sleeve

Openings may result from deep seasoning checks, from gouging by pointed tools, from loosened fastenings such as bolts, or when cuts or holes made after treatment are left unprotected. That is why it is vitally important to treat with preservatives, all areas that are exposed to probing, cutting or drilling. Periodic retreatment of areas prone to moisture contact and accumulation must also be done on a scheduled basis.

3.2 Visual Decay Detection. The color of wood may or may not indicate whether it has become decayed. As wood approaches the advanced stages of decay it loses its luster and may experience notable changes in color and become either much darker or much lighter than non-decayed wood. In the early stages, however, the wood may appear unchanged although it may have lost substantial strength, particularly in shock resistance.

The presence of fruiting bodies [Figure (2)] indicates that a decay fungus is present in the member where the bodies occur. Some fungi produce fruiting bodies at the wood surface after little or moderate decay while others do not produce fruiting bodies until after extensive decay has occurred.

Another visible clue to the presence of decay is the localized depression or sunken faces over decay pockets which extend close to the surface of the member. Termites, carpenter ants, and beetles often are associated with decayed wood and signs of infestation by these insects may be evidence of decay.

A number of signs provide visual evidence of existing conditions that may be conducive to decay. Areas exhibiting these signs should be inspected carefully. Evidence of water, such as watermarks may indicate areas of decay. Such areas should be checked with a moisture meter, such as a shigometer or pilodyn [Figure (3)]. If their moisture content is above 20%, the wood is wet enough to support fungal growth. If their moisture content is near 30%, decay likely is in progress. Rusty nail heads, screws or bolts also indicate that wood is being wetted. Noticeable growth of moss or other vegetation on wood surfaces or in checks or cracks is evidence of potentially hazardous wetting. Special attention should be paid to wood adjacent to water-trapping areas such as joints where end-grain is exposed to rain, wetting, or other sources of moisture. Wood primarily absorbs water through end grain, so decay often begins at joints.

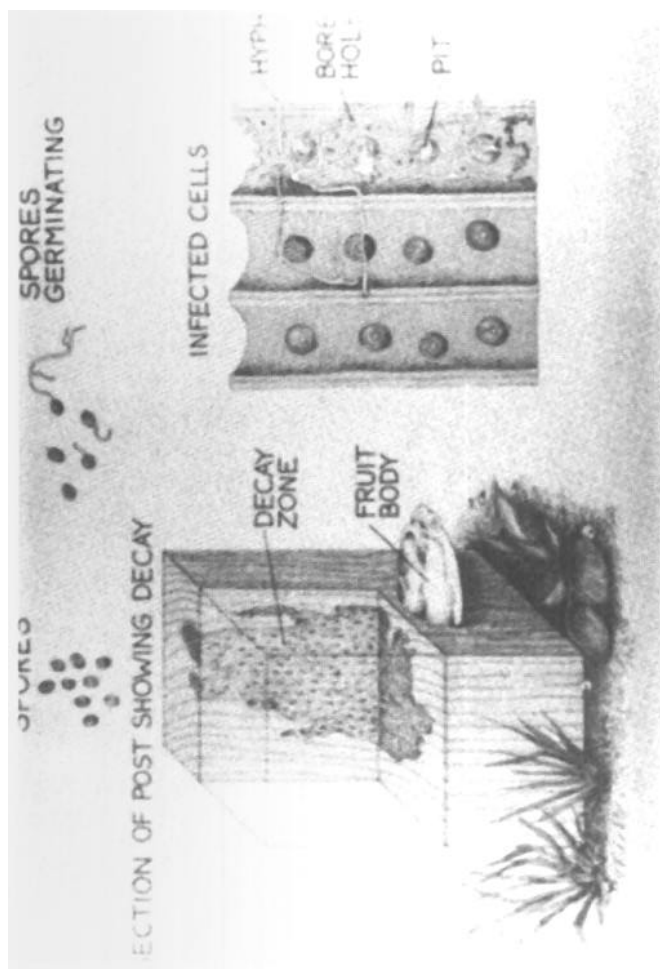


Figure 2
Decay Fungus Fruiting Body

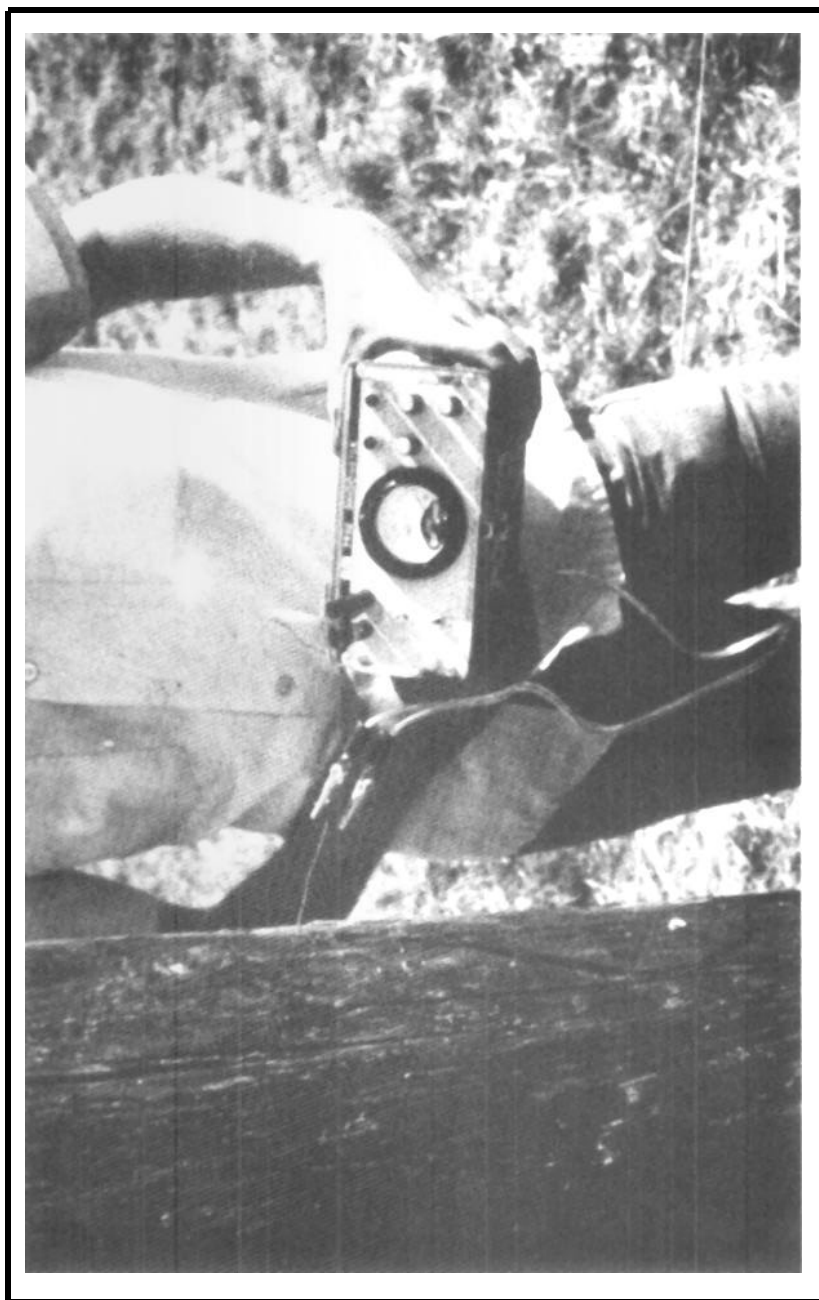


Figure 3
Moisture Meter Suitable for Inspection Work

3.3 Inspection & Maintenance Procedures for Wood Poles.

3.3.1 Internal Decay. When performing inspections and maintenance on antenna poles it is important to know that internal decay occurs as a result of fungal infestations that (1) start in poles before treatment or (2) where wood destroying organisms are able to penetrate the outer protective shell of preservative treated wood which surrounds the non-treated wood in the center. Deep checks which develop after treatment, mechanical damage from improper handling, woodpecker holes or other actions which break the protective shell, provide avenues for entry of decay fungi. Internal decay will also develop in pole tops cut or holes bored in the field when the cut surface is not coated with a topical preservative.

WARNING

Do not cut the butt ends off poles as this exposes the central untreated core of wood at the bottom of the poles and provides easy access for termites and decay fungi.

Checks and mechanical damage in the shell of treated wood can also expose the center of the pole to decay fungi.

3.3.2 External Surface Decay. External decay is most common at or below the ground line. As poles age, external decay may develop as the effectiveness of the treatment begins to decline.

3.3.3 Insects. Attacks of the untreated interior portions of poles by subterranean termites or carpenter ants are difficult to detect. However, if insects can gain entry, so can decay fungi. Therefore, the two will often occur together.

3.3.4 Inspection Procedures. The purpose of a pole inspection is to: (1) identify poles that are dangerous and should be replaced and (2) identify poles which are in the early stages of deterioration so that corrective actions can be taken.

Visual. A visual examination of the poles, using binoculars to inspect tops, can provide valuable information regarding the pole's condition.

Decay. Machine-damaged areas and checks should be critically examined during visual inspection. The size and location of seasoning checks should be noted. In general, the wider the check, the deeper it penetrates and the more likely untreated heartwood is exposed. Remember, only decay in the advanced stages is readily apparent. The presence of fungi in wood where decay has not progressed appreciably can be detected only by culturing or microscopic examination of the wood. Early decay can extend four feet or more above internal, visibly rotten areas in Douglas-fir poles. Surface decay usually occurs within the first 12 to 18 inches below the ground line, so digging is generally necessary to detect it. Periodic application of groundline preservative treatments will prevent and/or control this type of decay.

Termites and Carpenter Ants. These insects infest the internal untreated portion of poles. Therefore, little external visual evidence of their presence is apparent. Some termite galleries may be present if the insects are trying to bridge over treated wood. In addition, if a carpenter ant infestation has occurred, scattered bits of very fibrous and sawdust-like frass may be present in the area. Since a break in the protective shell must occur before these insects can reach and infest the untreated wood, decay is also likely to be present.

Vertebrate Organisms. Damage from vertebrate organisms, such as woodpeckers, is usually apparent. Binoculars should be used when inspecting large poles. If the damage is fresh, broken pieces of wood from the excavated hole should be present on the ground. Decay will be associated with older damage.

Vertebrate control may require permits from the Federal government or state. Recommendations and assistance for control should be obtained from the cognizant EFD [Appendix (A)].

Mechanical. Mechanical damage is generally obvious and found in the ground line area to a few feet above the ground.

Physical Tests. In addition to visual inspection, several physical tests are available to aid pole inspectors in determining the presence of biological damage. Some of these methods are very basic while others involve sophisticated electronic equipment. In all cases, considerable experience is required to interpret the results, especially with the newest non-destructive testing devices for wood poles.

Sounding. Sounding is a common method of inspecting poles for internal voids. The pole is firmly hit with a hammer from ground level to as high as one can reach. A crisp sound usually indicates the pole is solid. A dull sound thus indicates wet and possibly rotten wood and a “drum” sound indicates a void.

WARNING
Sounding Usually Detects Only The
Worst Poles.

To develop experience, poles that are sounded should then be bored to confirm which defects are actually present.

Boring. Where decay or insect attack is suspected, the pole is generally bored for confirmation. Increment borers [Figure (4)] are most commonly used. The core can be closely examined at the site and also saved for later culturing or microscopic examination. An effective, but simple way to save increment cores is to insert them into soda “straws”, seal the ends and label for identification. Protected in this manner, increment cores can be shipped to a laboratory for biological studies.

Poles that sound suspicious should be bored near deep checks and at the pole base or at ground line. If rot is detected, the poles should be bored at three or four points around the circumference. The shell thickness, depth of preservative treatment, and pole circumference are determined. Requirements for replacement, reinforcement, field treatments or schedules for reinspection can then be determined.

When boring holes above ground, the tool should be oriented slightly upward. This prevents water from accumulating in the hole. All openings made during inspection should be treated with a registered preservative and plugged with preservative-treated dowels. Protective goggles and other safety equipment, as appropriate, should be worn.

Shell Thickness Indicator. A shell thickness indicator [Figure (5)] can be used to determine the thickness of the non-decayed wood when poles are drilled rather than using an increment borer. The rod is inserted into the hole and then pulled back with pressure against the side of the hole. The hook at the end will catch on the remaining sound wood.

When pushing a tight fitting shell-thickness indicator into a hole, you can feel the tip of the hook pass from one growth ring to another in solid

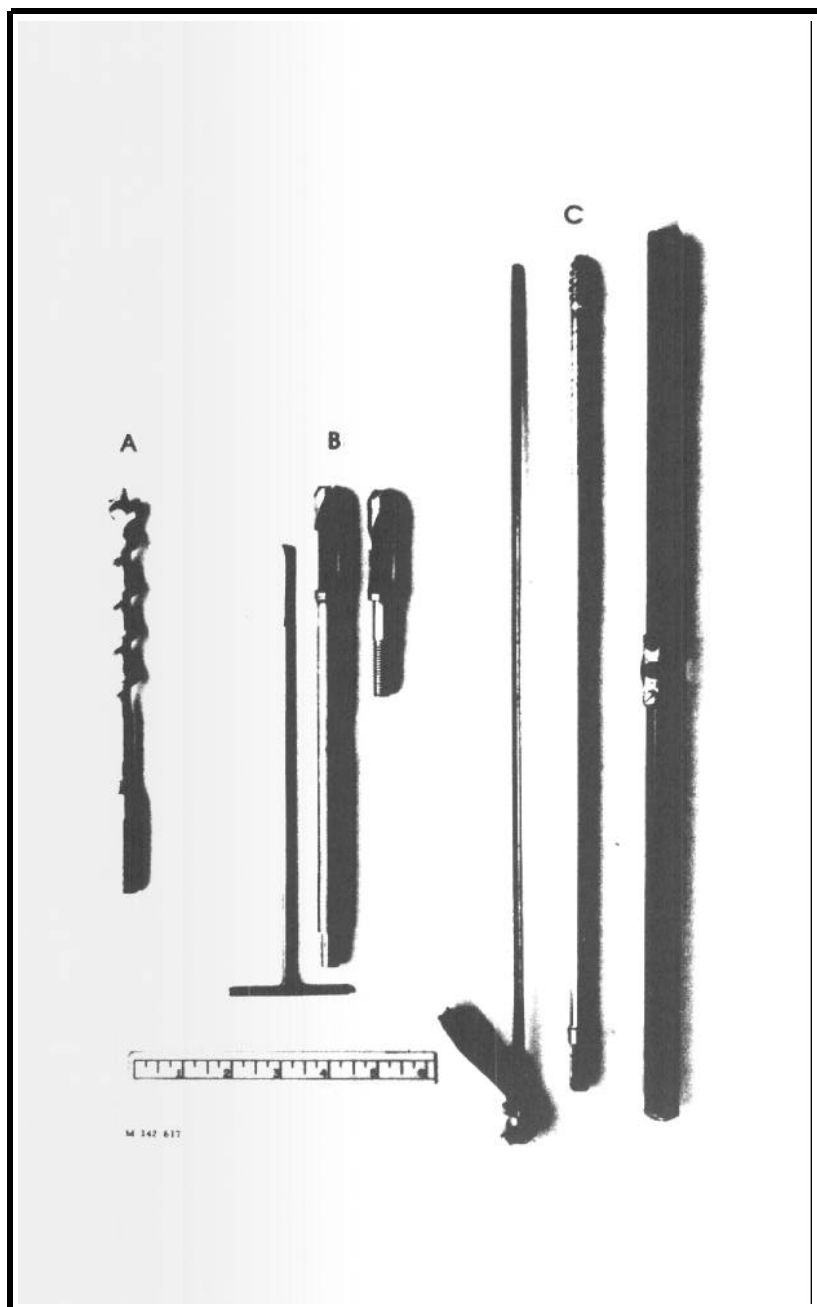


Figure 4
Increment Borers



Figure 5
Shell Thickness Indicator

wood, but not in rotten wood.

Biological Tests. It is important to detect and treat decay fungi as early as possible if the strength properties of the wood are to be maintained. Biological tests are still the most reliable means for detecting early stages of decay.

Culturing. The early or “invisible” stages of decay can be detected by culturing in the laboratory the core samples you have collected in the field using increment borers. Each core is placed in a plastic straw, labeled and the ends of the straw stapled shut.

The cores are brought to the laboratory and culturing begins within 24 hours.

Insect Identification. It is usually beneficial to identify insects if an infestation has occurred. If field identification is not possible collect the insect, their boring dust (frass), and a portion of the wood with typical damage, and consult the cognizant Pest Management Consultant (See Appendix A) for assistance with identification.

Determination of Serviceability. The results of your visual and physical inspections and lab reports help you determine the serviceability of the wood member. As the integrity of a wood member is destroyed by biological agents, its ability to withstand the load it was designed for is diminished. As more and more wood is destroyed, the structure becomes weaker. With poles, the location of the wood that is destroyed is more important than the amount of wood destroyed. The outer 44% of the pole radius contributes most (about 80%) of the bending strength. Therefore, decay in the center of the pole will reduce strength substantially less than if the outer shell is deteriorated. Decay in the above ground portions of the outer shell of a well-treated pole is an indication that the pole was decayed before treatment. This is why it is important to specify “white wood” inspection of treated products to be purchased,

4.0 REMEDIAL TREATMENTS.

WARNING

Preservatives are classified as pesticides and are therefore included within the provisions of PL 92-516, Federal Insecticide, Fungicide, and Rodenticide Act, as amended. As such, records on the use of wood preservatives must be maintained.

NOTE: CONTRACTOR QUALIFICATIONS: Contractors hired to formulate and apply preservatives (pesticides) to wood products, including poles, shall be licensed in accordance with the laws of the State/Country within which the work is being done. If EPA restricted use pesticides are used in the accomplishment of this specification, the pesticide must be applied by a certified pesticide applicator, or under the direct supervision of a certified applicator who is present on the installation at the time of application. The individual's certification must be valid in the state in which the application is to be made and in the category of work to be performed. The successful bidder shall be required to provide to the Contracting Officer proof of these qualifications. The contractor's supervisor(s) shall be Pole Treating Specialist(s), with a minimum of two years field experience in the art of pole inspection. The Contractor shall furnish proof, as demonstrated by at least three references, of qualifications and ability to perform the work specified.

4.1 Superficial Preservative Treatments. Preservative applications by brush, spray or pinstream (oil squirt can) do not penetrate deeply into the wood. These treatments are therefore not intended to protect the wood from sustained exposure to degrading organisms but more so as an adjunct to a good initial pressure preservative treatment.

Brush treatments should be flooded onto the surface and not brushed out thin, like paint. Checks and other openings should be saturated to the point of refusal. A pinstream application using a squirt type oil can applicator can be used effectively in this type of application. Wood should be well dried before treatment or it will not accept preservatives applied in this manner. If spraying, a course spray should be used to min-

imize health hazards. Special precautions should be taken to avoid drift.

Topical treatments recommendations for the major preservative classes are as follows:

Oilborne Preservatives. At least two brush applications of either creosote or a solution of at least 5 percent pentachlorophenol in a suitable solvent or one heavy application of a grease/paste containing at least 10 percent pentachlorophenol. Cleanliness requirements should dictate the type of treatment.

Waterborne Preservatives. At least one application of a 5 percent solution of the same preservative used in the original treatment.

For either of the above preservatives, appropriate copper naphthenate solutions can be utilized as this preservative is compatible with either of the above preservative formulations.

The label on the preservative container is a legal document. All methods of application, precautions, cleanup, safety, and dispersal must be carefully followed.

4.2 Groundline or Bandage Treatment. Groundline brush or bandage treatments are very effective in controlling surface decay in the outer shell of poles at and below groundline. With these treatments, the soil is excavated from the bases of poles to a depth of approximately two feet. The exposed surface of poles then are checked for decay and, if present, the decayed wood is removed using a sharpened shovel. Next a bandage wrap containing a preservative is fastened around the below-grade portions of the poles or preservative is applied directly to the pole surface and covered with a water-impervious wrap such as polyethylene that is fastened tightly to the poles. The wrap should not be damaged as the backfill is being replaced.

Before treatment, the surface to be treated should be cleaned of any decayed or loose wood. No more sound wood than necessary should be removed. All debris should be removed from the excavated area around the pole.

NAVFAC Specification TS-20312 (Maintenance of Wooden Utility Poles) is a specification for groundline treatment and should be used as a guide for developing a contract specification.

4.3 Internal Void Treatment. Liquid preservatives or fumigants may be used to control decay and insect attack within the central core of poles. These treatments require drilling holes into the decayed areas and placing the preservatives or fumigants in the holes. The holes are plugged following treatment.

Internal void treatment with liquids is most successful on cedar and other woods that develop well defined rot pockets and where the transition from rotten to sound wood is abrupt; they are least effective in Douglas-fir with poorly defined rot pockets. For Douglas-fir, use a fumigant alone or in combination with a water-soluble preservative solution. To arrest internal decay, water-soluble chemicals, e.g. arsenicals, fluorides or borates are forced into the voids and diffused through the wet wood. Ants in pole voids can be controlled by injection with volatile liquids combined with preservatives such as creosote or pentachlorophenol.

Serviceable poles with voids, hollows or insect galleries can be internally treated with a liquid pesticide registered by the EPA for such use. Poles shall be bored with a 3/8 inch drill bit, a sufficient number of times to assure uniform internal coverage. Preservatives are pumped into the bottom hole until it runs out the next higher hole. The hole is then plugged with a preservative-treated plug, and preservative is then pumped into the next higher hole until it runs out the hole above. This procedure is repeated until the entire cavity is flooded or a maximum of one gallon of preservative is used. Preservative pastes also can be injected into holes to treat internal voids.

4.4 Fumigant Treatment.

WARNING

Because of the hazards associated with fumigants, they shall only be applied by individuals who hold a valid DoD or State Pesticide Applicator certification in the Category applicable to fumigation.

At overseas installations, insure, through the cognizant Pest Management Professional (Appendix A), that this material is legally acceptable.

Consult the cognizant PMC for local regulations concerning fumigants. Fumigants can control internal decay for at least nine years. As a result, the use of fumigants is now common technology.

Sodium N-methyl dithiocarbamate (Vapam), methylisothiocyanate (MITC-Fume) (Vorlex), and trichloronitromethane (chloropicrin) are currently registered with the U.S. Environmental Protection Agency (EPA) for application to wood. These are restricted use pesticides and can only be applied by a certified applicator.

Label directions for applications of individual fumigants must be followed. In general, starting at the ground line, 5/8 to 7/8 inch diameter holes are drilled directly towards the center of the pole at a steep downward angle.

The hole should not be through the pole or intersect seasoning checks which would allow the fumigant to escape. To assure good distribution of the fumigant, holes are spaced evenly (and drilled in a downward direction) around the pole in an upward spiral pattern with a vertical spacing of 6 to 12 inches. If more than two treating holes intersect an internal void or decay pocket, re-drill the holes further up the pole into relatively solid wood where the fumigant will gradually volatilize and move through the wood.

The fumigant placed in decay pockets will be lost if the seasoning checks connect the pocket to the outside of the pole. If the decay pocket is above the ground line, holes should be bored above and below the pocket. A three inch long treated plug is inserted into each hole after treatment.

Fumigant applicators must wear protective clothing and stand upwind from the point of application. The proper amount of the chemical is applied to the lowest hole first, leaving enough space for the plug. A tight fitting preservative treated plug is driven into the hole. **Care must be exercised to avoid squirting the fumigant from the hole while driving the plugs.** The applicator should continue to work up the pole one hole at a time.

Decay fungi recolonize vapam-treated poles in about five years, but the fungal population remains low for at least nine years. These poles should be retreated every nine years by placing additional fumigant in the same hole.

The effectiveness of wood fumigants for long term insect control is uncertain. Vapam may control subterranean termites, however, carpenter ants are known to reinfest wood shortly after fumigant application, perhaps because of the decreased fumigant concentration.

NAVFAC Specification TS-20312 provides additional guidance on pole fumigation requirements. Application of wood preservatives requires DOD or State certification (See Section 2.0).

5.0 POLE TOP PROTECTION. Pole top deterioration is caused by decay fungus and weathering action. Depressions, splits, and checks create water holding pockets which cause wood to expand and contract, freeze and thaw and subsequently split and check. These conditions present an ideal condition for decay fungi. When left unchecked, the pole top continues to deteriorate until pole topping or removal is necessitated.

Pole top products are now available which effectively protect pole tops from weathering, decay fungi and ultimately degradation.

Pole tops (caps) are designed to keep the roof portion of poles free of moisture thus preventing attack by decay fungi. Preservative fluids are also available which should be applied to the pole tops prior to capping or topping.

6.0 POLE STRENGTH RESTORATION. Woodpeckers, carpenter ants, decay fungi and termites can cause extensive damage to wood poles. Left unheeded they can cause serious damage and result in early pole failure.

When poles are found to be structurally damaged and accompanied by significant strength loss, repair alternatives versus replacement must always be considered. New state-of-the-art techniques, using epoxy resins, fibers, and fillers can restore poles to their original strength [Figure (6)]. When cured, these epoxies are stronger than wood and can also be drilled, sanded, painted or sawn and be applied to wet surfaces. When applied in conjunction with preservative supplements for preventing further deterioration, poles can be restored to original condition. When site conditions make pole replacement prohibitively costly, pole restoration can become a viable solution via cost reduction and prevention of down time. Therefore this should become an available procedure in any pole maintenance program.

Steel reinforcement splints are also available for restoring pole integrity. Splints can also be utilized as a temporary repair procedure for emergency use when poles are mechanically damaged. Replacement or permanent repair can then be done during normal working hours rather than via costly overtime work.

Screening is also available for use on poles that are continuously attacked by woodpeckers, usually caused by territorialism. Territorial poles may require screening to prevent continuing attack.

7.0 PRESSURE PRESERVATIVE TREATMENTS.

7.1 Introduction. Due to the limited availability and variation in decay resistance of durable woods such as green heart, cypress, redwood or cedar, the Navy is required to use relatively non-durable wood that is treated with preservatives to protect from attack by decay fungi and insects. Preservatives applied to wood by nonpressure processes usually provide only superficial protection. For maximum protection, all wood poles world-wide should be initially preservative treated by pressure processes.

7.2 Incising.

7.2.1 Background. Preservative penetration in hard-to-treat woods such as Douglas-fir, Western-fir, Western-hemlock, redwood, and pines that contain a large amount of heartwood, is significantly increased by incising wood before treatment [Figure (7)]. The incisions are commonly 1/4 to 1/2 inch long and deep and about 1/8 inch wide. For such woods, incising should be specified, non-incised



Figure 6
Pole Restoration Using Epoxy Resins, Fibers and Fillers

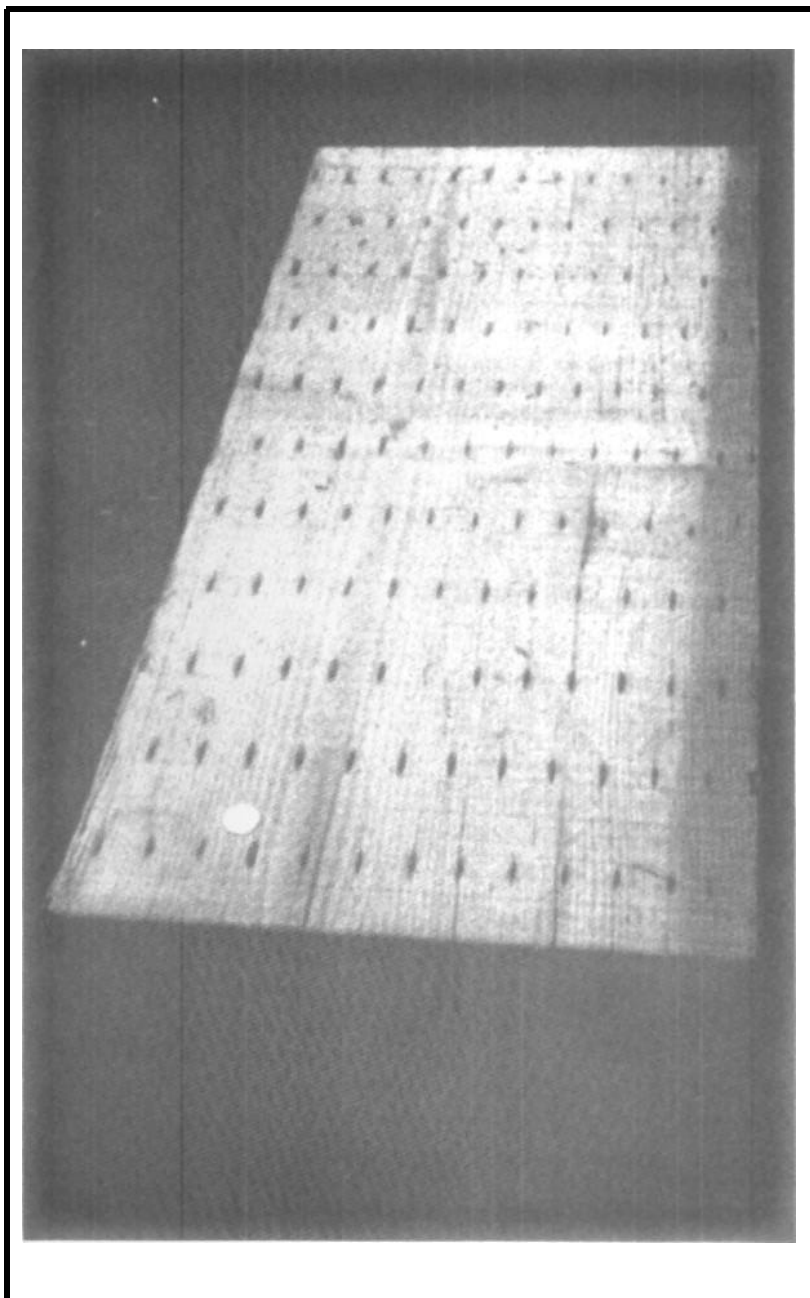


Figure 7
Incising to Enhance Preservative Treatment

material should not be accepted as an alternate in bids. Whenever possible, specifications should state that poles should be pre-cut, pre-drilled, or otherwise mechanically altered, prior to preservative treatment.

7.3 Enhanced Preservative Treatments.

Additional fortification (preservative loading) of the original pressure preservative treatment is one of several techniques used to improve service life performance when environmental conditions are considered harsh and contribute significantly to the early failure of wood poles. This procedure will increase both preservative penetration and retention which in turn will effectively protect poles against extremely hostile environments to which they are sometimes subjected.

Preservative treatments for new wood products are specified in accordance with the American Wood Preservers Association (AWPA) treatment standards. AWPAs standard C-4 (POLES) specifies preservative retention levels in accord with geographical location and associated decay hazards. As conditions worsen, higher retention levels are specified. At many sites world-wide, poles are subjected to extremely hostile environments and even the highest retention level prescribed by AWPAs treatment standard C-4 may not be sufficient to attain satisfactory performance. Increasing preservative loading to an acceptable level therefore requires that pole treatments be specified in accordance with AWPAs treatment standard C-3 (PILES), a treatment standard which accommodates higher loading level requirements. High preservative retention poles to be ordered under this standard are, by AWPAs treatment standards definition, piles and should be described (for specifying treatment in accordance with AWPAs Standards) as piles.

NOTE:

Appendix (B) is a pole treatment specification which has been tailored in concert with the above guidelines.

8.0 POLE PERFORMANCE EVALUATION (IN-SERVICE). Wood inspection surveys conducted at several sites around the world determined that many poles are performing extremely well, even in the most hostile environments. Preservative assays were conducted at these sites. Surprisingly, retention assays for these poles (all creosote preservative

treated) indicated exceptionally high retention levels. Keeping in mind also that many of these poles have been in service for over 25 years during which time some preservative leaching has occurred. The exceptional performance being experienced can be primarily attributed to superior original preservative treatment. In order to continue this exceptional performance, preservative treatments found in these poles should be duplicated when ordering new replacement poles. As discussed above in 7.3, this requirement can only be accomplished by specifying in accordance with AWP standard C-3 (PILES).

9.0 QUALITY ASSURANCE FOR NEW PRODUCTS.

9.1 Introduction. U.S. Navy policy is to obtain independent inspection for verification to avoid even the appearance of conflicts of interests and appearances of such. Therefore, wood products purchased by the Navy shall be inspected by the government or by an inspection agency independent of the producer company. The Navy requires that either (1) an independent inspection agency verify that the treated wood products comply with the appropriate AWP standards or (2) that the treated wood products are stamped by a Quality Assurance agency which verifies compliance with the appropriate AWP standards.

9.2 Certificate of Compliance. This document, offered by the treater, signifies that treatment standards have been complied with. This document is not reliable and is the least desirable method of insuring quality. Unless the activity has the capability of inspecting wood products to verify quality, the certificate of conformance should never be accepted in lieu of physical inspections or Quality Marks.

The contractor is responsible for the quality of treated wood products. Each treated product must be branded by the producer in accordance with AWP M6. The Contractor must provide the Contracting Officer's Representative (COR) with the inspection report of an independent inspection agency, approved by the Contracting Officer, that verifies that products comply with applicable AWP Standards. The American Wood Preservers Bureau (AWPB), Southern Pine Inspection Bureau (SPIB) Quality, or the WQC Quality Mark of the Rural Electrification Administration on each product will be accepted in lieu of inspection reports as evidence of compliance with applicable AWP treatments Standards.

9.3 Quality Assurance Guidance. All personnel involved in the receipt of treated wood products should familiarize themselves with the quality assurance procedures detailed in NAVFAC MO-312.2, Field Guide for the Receipt and Inspection of Treated Wood Products By Installation Personnel. This document provides users with a step by step process for quality assuring wood products.

9.4 Plant Inspection. The Contracting Officer reserves the right to perform plant inspections of the products being treated. The Contracting Officer is allowed unlimited access to the plant with inspection privileges for all facets of the treating process.

9.5 Branding or Marking.

9.5.1 Background. This requirement is frequently overlooked by activities during the procurement and receipt of treated wood products. Omission of this requirement on specifications, or failure of activity personnel to reject unmarked materials upon delivery can be costly to the activity. Materials found to be non-conforming to specifications after delivery may not be returnable to the contractor, because unmarked products cannot be identified as belonging to a specific contract or contractor. The activity is then left with the option of either installing inferior materials, which will predictably fail prematurely, or utilize these materials for less critical projects where premature failures are less costly to repair.

Marking or branding of wood products also serves another important function; that of providing activities with a means of evaluating product performance. All branding requirements must minimally require the type of treatment, the name of the treater and the treatment year. This information provides activity inspectors with the means to evaluate product performance which will subsequently identify shortcomings in the Quality Assurance Program. Branding also allows activities to evaluate product performance by given treaters. Thus, branding requirements are critical to the success of any Quality Assurance Program.

9.5.2 Requirements.

General: Treated material shall be either hammer or heat branded, or metal tagged in accordance with AWPAs Standards M1 and M6.

Piles: If poles are specified for ultra treatment under AWPAs standard

C-3 (PILES), each (pole) pile shall be branded or tagged in two places approximately 5 and 10 feet from the butt. The brand shall identify species, length, preservative, retention, supplier, and the year of treatment.

Poles: Each pole 50 feet or less in length shall be branded or tagged 10 feet from the butt. Poles 55 feet or more in length shall be branded or tagged 14 feet from the butt. All poles shall have the required branding or tagging included on the butt face. The brand shall identify species, class and length, preservative, retention (may be indicated with “S” for standard or “H” for heavy retention), supplier, plant designation, and year of treatment.

9.5.3 General Inspection Procedures: To check for evidence of inspection prior to treatment, look on the tip (top) end of the poles for a brand that identifies the inspection agency and the inspector [Figure (8)]. Upon inspection “in the white”, poles which meet material standards are hammer stamped on the tip end. This is the only stamp that is ever put on the tip end.

To determine the type of treatment and preservative retention level, check the brand applied by the supplier. Following preservative treatment, poles are branded on the face side of the pole 10 feet from the butt for poles 50 feet or shorter and 14 feet from the extreme butt for poles over 50 feet long. These brands contain the following information:

- (1) Supplier's Name
- (2) Plant Designation
- (3) Year of Treatment
- (4) Species of Timber and Preservative Treatment
- (5) Preservative Retention
- (6) Class and Length

Poles are treated in accordance with the appropriate federal standard or AWP Standard C4 and are inspected under Power Pole Standard REA-DT5C. To determine that poles have been inspected, check for a hammer mark of an approved inspector/agency on the butt end of each pole [Figure (9)]. The brand must contain the letters WQC or equivalent quality mark.

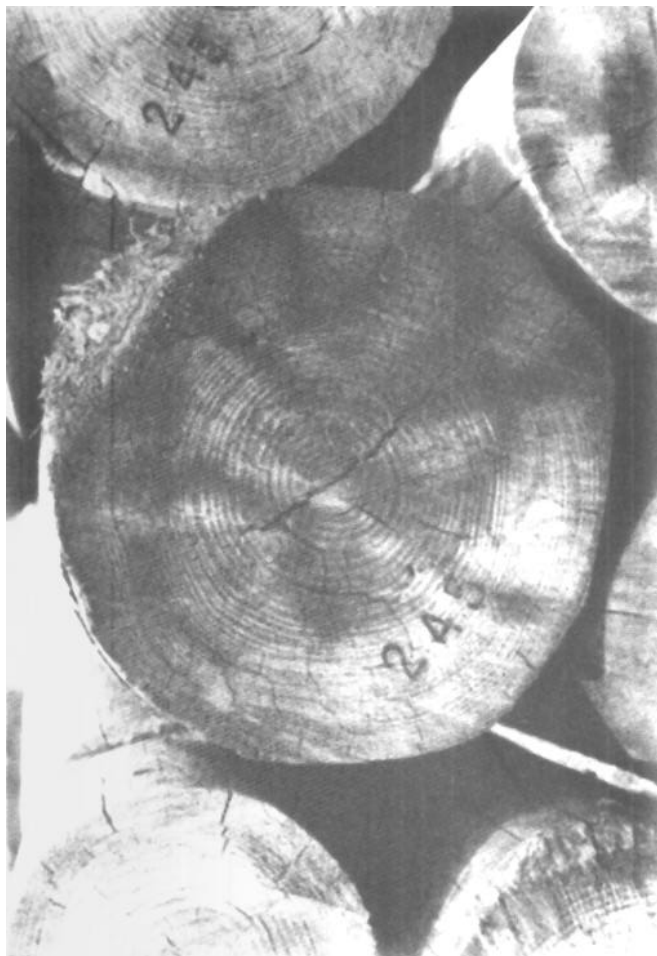


Figure 8
Typical Inspection Agency “In-The-White”
Hammer Stamp Mark Placed on Pole Tip

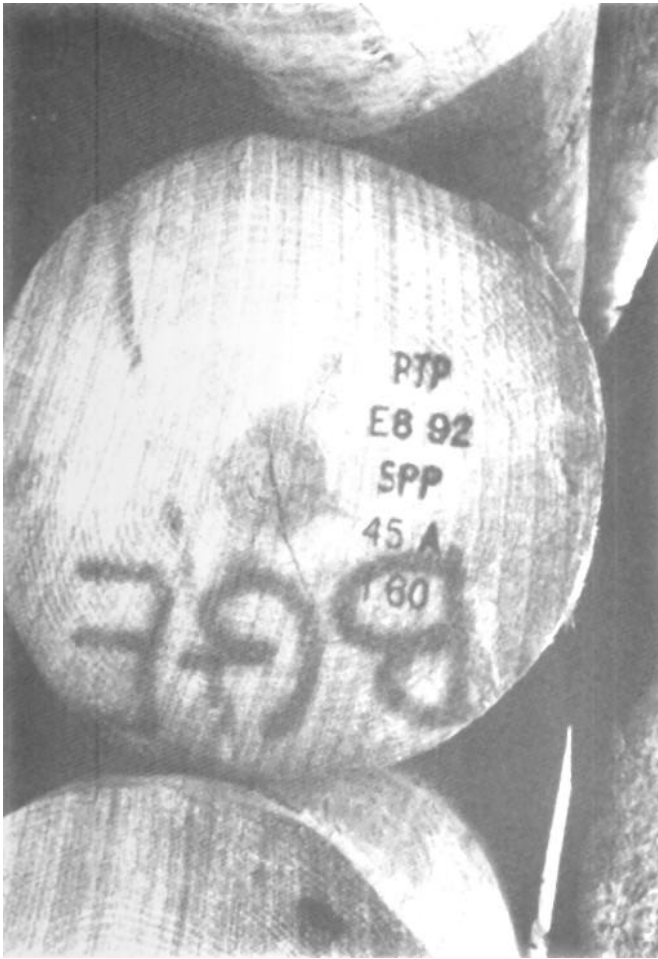


Figure 9
Typical Inspector/Agency Preservative Treatment
Inspection Mark Placed on Pole Butt

10.0 TECHNICAL PROCUREMENT REVIEW.

NAVFACINST 6250.4C requires that Requisitions and Invitations for Bid for treated wood products which deviate from the instruction be reviewed and approved by the cognizant NAVFAC EFD Applied Biologist prior to submission. This requirement will insure that the most appropriate product is ordered, that current treatment specifications are cited, and that Applied Biologists are alerted to pending procurements which may require actions to insure product quality.

Review requirements may be waived or reduced by the cognizant EFD when an activity has been shown to be consistently receiving products of acceptable quality. Review guidance may then be provided on an as necessary basis to maintain acceptable product quality levels.

11.0 CARE AND HANDLING OF TREATED WOOD PRODUCTS.

WARNING

Whenever possible, alterations should be made prior to the original pressure preservative treatment!

11.1 Introduction. AWWA Standard M4 outlines recommended practices for the care of preservative-treated wood products. The publication deals primarily with practices at the treating plant, however, the following field recommendations are made.

11.2 Machining and Cutting, All cutting, boring and other machining of wood should be done prior to preservative treatment as much as possible. Cutting treated wood at the construction site exposes untreated heartwood to wood destroying organisms.

Untreated wood, exposed by cutting, etc., at the job site should be field treated. The same wood preservatives used to pressure treat commodities can often be used for treatment of field cuts or else a copper naphthenate solution containing a minimum of two percent copper metal can be used. For detailed information on preservatives and field application methodology, refer to AWWA Standard M4 which includes all treated wood products.

12.0 HANDLING AND STORAGE.

Poles treated with oil borne preservatives should be installed soon after treating to minimize lateral movement of preservative to the extent that subsequent durability of the treated product will be reduced. This is a particularly important consideration in procurement programs for poles that might normally be expected to be in storage for a minimum of one year.

Poles treated with creosote or oil base preservatives stored in a horizontal position for over 18 months can lose preservative due to bleeding and volatilization or the preservative can migrate in the wood. To minimize this loss, poles should be rotated periodically while in storage.

Migration or loss of preservative during storage is not a problem with water-borne preservatives.

13.0 TECHNICAL ASSISTANCE.

13.1 General. EFD Applied Biologists are available to provide technical assistance to all Naval activities on wood related matters. On-site assistance can be obtained via Engineering Service Requests or during scheduled on-site reviews which are normally conducted at least biennially. Applied Biologists maintain particular expertise in the area of pesticides (wood preservatives) legal requirements (State and Federal Laws) for pesticide applications, pesticide use, State and Federal pesticide applicator certification requirements, and pesticide applicator training, Appendix A provides names, addresses and phone numbers and geographical areas under their cognizance. Activity assistance or technical information should be obtained from the EFD which maintains responsibility for activities within your geographical area.

14.0 REFERENCE GUIDES.

1. OPNAVINST 6250.4A. **Pest Management Programs.** This instruction designates responsibilities, states the legal requirements for the safe handling and use of pesticides and provides guidance for a careful environmental stewardship of Navy property and natural resources.
2. NAVFACINST 6250.3H. **Applied Biology Program Services and Training.** Lists the pest management services, to include vegetation control and wood protection. Describes in detail the training and certifica-

tion requirements necessary to apply pesticides on Navy activities.

3. NAVFACINST 6250.4B. **Selection, Use and Maintenance of Pressure-Treated Wood Products.** Based on intended end use, provides guidance for the specification of treated wood products to extend the service life of wood products.

4. NAVFAC MO-312. **Wood Protection.** Provides information on the different tree species, and the physical and chemical characteristics of wood. Discusses the different chemical preservatives along with the purpose, advantages and disadvantages of each type. Finally discusses the importance of a quality management program for assuring the receipt of quality treated wood products.

5. **American Wood Preservers Association Book of Standards.** This publication provides the technical requirements for chemical preservatives, chemical retention levels for specific end products, testing procedures, and product marking requirements. These are the non-government standards to be cited in Navy procurement specifications.

6. NAVFAC Specification TS-20312. **Maintenance of Wooden Utility Poles.** Provides guidance for the inspection and preventive maintenance of a utility pole plant. Properly treated utility poles can last 40-50 years, a periodic inspection and maintenance program can add many additional years.

7. NAVFAC MO-312.2 of April 1991. **A Field Guide for the Receipt and Inspection of Treated Wood Products by Installation Personnel.** All Navy personnel should have this book in hand when inspecting treated wood products for acceptance.

15.0 RECORD KEEPING REQUIREMENTS.

15.1 Background. Complete records on the replacement and preservative in-place treatment of wood components are often either not kept or are incomplete.

15.2 Discussion. Historical records maintained on poles are invaluable in determining structural performance, identifying potential biological problem areas (decay), and for evaluating effectiveness of in-place maintenance procedures.

Records on in-house inspections can also provide significant and useful information to inspection teams thereby enabling inspection efforts to be more selective during the overall structural evaluation. Specific information needed;

Component Replacement.

- Specific component replaced and location within SYSTEM.
- Date of replacement.
- Cause for replacement.
- Photographs of damage causing replacement.

In-House Inspections.

- Date of inspection.
- Type of inspection; sounding, drilling, visual, etc.
- List of components inspected and findings.

In-Place Maintenance Efforts.

- Date of treatment.
- Type of treatment.
- Material used.
- Identification list of components treated.

Appendix A

NAVAL FACILITIES ENGINEERING COMMAND APPLIED BIOLOGISTS

Office	Personnel	Area of Responsibility
Applied Biology Program (1634) Naval Facilities Engineering Command, 200 Stovall Street Alexandria, VA 22332-2300	Mr. William A. Gebhart (1634) 703/325-2480/2482 DSN 221-2480/2482 FAX 703/325-6904	Navy-wide
<hr/>		
Atlantic Division (161) Naval Facilities Engineering Command Norfolk, VA 23511-6287	Dr. Daniel G. Maiello (161A) 804/444-9581, 9546 DSN 564-9581, 9546	Virginia, North Carolina, Kentucky, West Virginia, Argentina, Newfoundland Iceland, United Kingdom, West Germany, Greece, Italy, Morocco, Spain, Azores, Antigua, Barbados, Trinidad, Turks Caicos, Bermuda, Puerto Rico, Panama
<hr/>		
Pacific Division (114A) Naval Facilities Engineering Command Pearl Harbor, HI 96860-7300	Mr. Lawrence Pinter 808/474-5961 Dr. Stanley Y. Higa 808/474-5956 (wood protection)	Hawaii, Midway, Guam, Phillippines, Okinawa, Japan, Australia, Bahrain Diego Garcia
<hr/>		
Northern Division (164) Naval Facilities Engineering Command Lester, PA 19113-2090 (1831)	Mr. Peter L. Fish Navy-Wide Wood Protection 215/595-0598 DSN 443-0598 Mr. Stephen Kincaid Mr. Jeff Davis Mr. Simeon Hahn 215/595-0567 DSN 443-0567	Maine, New Hampshire, Vermont, Massachusetts, New York, Illinois, Indiana, New Jersey, Pennsylvania, Delaware, Ohio, Maryland, Virginia, Connecticut, Michigan, Wisconsin, Minnesota, Iowa, Missouri, Kansas, Nebraska, North Dakota, South Dakota, Colorado, District of Columbia, Rhode Island
(Northern Division also supports Chesapeake Division installations)		

Office	Personnel	Area of Responsibility
Southern Division (16A) Naval Facilities Engineering Command, P.O. Box 10068 Charleston, SC 29411-0068	Mr. C. W. Bennett (16A) (wood protection) Mr. Melvin P. Marks Mrs. Sharon E. Bartku 803/743-0508, 10, 11 DSN 563-0508, 10, 11	North Carolina, South Carolina, Georgia, Florida, Alabama, Louisiana, Mississippi, Tennessee, Texas, Arkansas, Oklahoma, New Mexico, & Andros Island (Bahamas)
Western Division (162A) Naval Facilities Engineering Command, P.O. Box 727 San Bruno, CA 94066-0720	Mr. A. Reese Christopherson Mr. Scott Dombrosky (wood protection) 415/244-3572,3 DSN 494-3572,3	Alaska, Arizona, California Idaho, Montana, Nevada, Oregon, Washington, Wyoming, Utah
(Western Division also supports Southwest Division installations)		
Commanding Officer (420E) U.S. Navy Public Works Center Box 13 FPO Seattle 98762	Mr. Akira Masui DSN 234-7414	U. S. Navy installations in Japan (less Okinawa)

(Revised 14 Aug 1992)

APPENDIX B
TREATMENT SPECIFICATION
(Ultra-High Preservative Loaded Wood Poles-
For Use in Hostile Environments)

- 1) Product: Southern Pine (preferred due to treatability and performance.)
- 2) Preservative Treatment: Creosote and Creosote solutions in accordance with American Wood Preserver's Association [current (standard P2-)].
- 3) Materials and Requirements:

(a) Piles: Provide Southern Pine clean-peeled piles conforming to ASTM D25. Minimum (butt circumference measured at 3 feet from the butt end)(tip-circumference) shall be (____ inches) (as indicated). Piles shall be in one piece. Splices will not be permitted.

(b) Preservative Treatment: Treat piles by the full-cell pressure process in accordance with AWWA C1 and C3 for Marine piling using Creosote and Creosote solutions [current (AWPA P2-)].

- 4) Certificates of Compliance:

The contractor shall be responsible for the quality of treated wood products. Each treated pile shall be branded, by the producer, in accordance with AWWA M6. The contractor shall provide the Contracting Officer's Representative (COR) with the inspection report of an independent inspection agency, approved by the Contracting Officer, that offered products comply with applicable AWWA Standards. The AWWA Quality Mark "MP-2" on each pile will be accepted, in lieu of inspection reports, as evidence of compliance with applicable AWWA treatment standards,

- 5) Plant Inspection:

The Contracting Officer reserves the right to perform plant inspections of the treating process. Provide the Contracting Officer with a minimum 3-week advance notice, indicating location of the initial preservative treatment. Allow the Contracting Officer unlimited access to the plant and inspection privileges for all facets of the treating process.

- 6) Branding or .Marking:

Each treated pile shall be permanently marked or branded, by the producer, in accordance with AWWA M6.

7) Note: When Government inspections result in product rejection, the Contractor shall promptly segregate and remove rejected material from the premises. The Government may also charge the Contractor any additional cost of inspection or test when prior rejection makes reinspection or retest necessary.

APPENDIX C

LIST OF SUPPLIERS

Disclaimer

Trade names are used for providing specific information and do not imply endorsement of the products named or criticism of similar ones not mentioned.

Mention of trade names does not constitute a guarantee or warranty of the products by the military Departments, or the Department of Defense.

Poles and Piles

Baldwin Pole & Piling Co., Box 768, Bay Minette, AL 36507
Poles and Piles

Brown Wood Preserving Co., Rt 3, Box 309, Northport, AL
Poles and Piles

Cahaba Pressure Treated, Rt 1, Brierfield, AL 35035
Poles and Piles

Great Southern Wood Preserving Inc., 201 Park Blvd., Irvington, AL 36544
Piles

Huxford Pole & Timber Co., Inc., PO Box 579, Hwy #21, North Huxford, AL 36543
Poles and Piles

Koppers Ind, PO Box 510, Montgomery, AL 36101
Poles & Piles

T. R Miller Mill Co., Box 708, Brewton, AL 36427
Poles

Olon Belcher Lbr Co., Box 160, Brent, AL 35034
Poles

Seaman Timber Co., Inc., Box 372, Hwy 25S., Montevallo, AL 35115
Poles and Piles

Stallworth Timber Co., Inc., PO Box 38, Beatrice, AL 36425
Poles

Swift Lumber Inc., PO Drawer 1298, Atmore, AL 36504
Poles and Piles

Arizona Pacific Wood Preserving, 805 W. Chambers St., Eloy, AZ 85231
Poles

J. H. Baxter Co., 422 Mill St., Weed, CA 96094
Poles and Piles

J. H. Baxter Co., Box 477, Long Beach, CA 97440
Poles and Piles

Cal Coast Wholesale Lumber, PO Box 6873, Ukiah, CA 95482
Poles and Piles

Fontana Wood Preserving Inc., 15500 Valencia Ave., Fontana, CA 92335
Poles

Koppers Industries Inc., PO Box 351, Oroville, CA 95965
Poles and Piles

McCormick & Baxter Creosoting, PO Box 1728, Stockton, CA 95201
Poles and Piles

Pacific Wood Preserving, 560 District Blvd., Bakersfield, CA 93313
Poles and Piles

San Diego Wood Preserving, 2010 Haffley Ave., National City, CA 92050
Poles and Piles

Koppers Industries, 465 W. 56th Ave., Denver, CO 80216
Poles and Piles

Ponderosa Timber Co., PO Box 239, Dolores, CO 81323
Piles

Wigand Corp., 850 Eklton Dr., Colorado Springs, CO 80907
Piles

Apalachee Pole Co., PO Box 688, Bristol, FL 32321
Poles and Piles

Florida Wood Treaters Inc., 4500 E. 11th Ave., Hialeah, FL 33013
Piles

Koppers Industries Inc., Box 1067, Gainesville, FL 32602
Poles and Piles

Post & Lumber Preserving co., PO Box 940, Quincy, FL 32357
Piles

Robbins Mfg Co., PO Box 17939, Tampa, FL 33682
Poles and Piles

Wood Treaters Inc., PO Box 41604, Jacksonville, FL 32203
Poles and Piles

Ace Pole Co., PO Box 1323, Waycross, GA 31502
Piles

Atlantic Wood Industries, Box 1608, Savannah, GA 31495
Poles and Piles

Baxley Creosoting Co., E. Parker Street, Baxley, GA 31513
Poles

Brunswick Wood Preserving Co., RR #5, Box 2K, Brunswick, GA 31520
Poles and Piles

Camilla Wood Preserving Co., Box 13087, Pensacola, FL 35291
Poles

Cook County Wood Pres., Box 6437, Adel, GA 31620
Piles

Glennville Wood Preserving Co., Inc., Rt 4, Box 28, Glennville, GA 30427
Poles and Piles

Keadle Treating Co., Inc., 889 RR St 6, Thomaston, GA 30286
Poles and Piles

Langdale Forest Products Co., Box 1088, Valdosta, GA 31603
Poles and Piles

Manor Timber Co., Inc., Rt 1, Box GO, Manor, GA 31550
Poles

W. C. Meridith Co., Inc., Box 90456, East Point, GA 30364
Poles and Piles

Savannah Wood Pres Co., Inc., 501 Stiles Ave, Savannah, GA 31412
Piles

Union Timber Corp. Box 238, Homerville, GA 31634
Poles and Piles

B. J. Carney Industries, Inc., Box 408, Spokane, WA 99210
Poles

Pressure Treated Timber Co., 3200 Gowen Rd., Boise, ID 83705
Poles and Piles

Hagar Wood Preserving Inc., County Rd 700 North, Forrest, IL 61741
Piles

Illinois wood Pres, Inc., Box 491, Hillsboro, IL 62049
Piles

Southern Indiana Wood Pres Co., Rt 1, Box 147, Winslow, IN 47598
Piles

Western Tar Products Corp., Box 270, Terre Haute, IN 47808
Piles

Brown Wood Preserving Co., PO Box 1423, Louisville, KY 40214
Poles

Esterday Tie & Timber Co., PO Box 421, Mayfield, KY 42066
Poles and Piles

Kentucky Wood Preserving of Winchester, PO Box 15, Winchester, KY 40391
Poles

Benton Wood Preserving Co., Box 53, Shreveport, LA 71161
Poles and Piles

Madisonville Wood Preserving Co., Box T, Madisonville, LA 70447
Piles

Atlantic Wood Industries, PO Box L, Fruitland, MD 21626
Poles and Piles

Eastern Maryland Wood Treating, PO Box 155, Federalsburg, MD 21632
Poles and Piles

Hatheway & Patterson Co., 15 County St., Mansfield, MA 02048
Poles and Piles

Continental Wood Preservers, 7500 E. Davidson Ave., Detroit, MI 48212
Poles and Piles

Hagar Wood Preserving, 1211 Judd St., S.W., Grand Rapids, MI 49509
Piles

Lake States Wood Preserving, PO Box 8, Munising, MI 49862
Poles and Piles

Bell Lumber & Pole Co., Box 2786, New Brighton, MN 55112
Poles

Page & Hill Forest Products, Box 7, Big Falls, MN 56627
Poles and Piles

Brookhaven Wood Preserving Co., Box 974, Brookhaven, MS 39601
Poles

International Paper Co., PO Box 340, Wiggins, MS 39577
Poles

Koppers Industries, PO Box 160, Tieplant, MS 38960
Poles and Piles

Phillips Bldg Supply, Box 3059, Gulfport, MS 39505
Poles and Piles

Southern Wood Pres of Hattiesburg, PO Box 630, Hattiesburg, MS 39403
Poles and Piles

Timco Inc., Box 190, Wiggins, MS 39577
Piles

International Paper Co., PO Box 2671, Joplin, MO 64803
Piles

Kalispell Pole & Timber Co., Box 1030, Kalispell, MT 59903
Poles

McFarland Cascade, Box 1496, Tacoma, WA 98421
Poles

Atlantic Wood Industries, Box 487, Hainesport, NJ 08036
Poles and Piles

Koppers Industries, Maritime & Tyler Sts., Port Newark, NJ 09114
Poles and Piles

General Wood Pres, Box 370, Leland, NC 28451
Poles

Great Northern Wood Preserving, BOX 249, Akron, OH 44309
Poles and Piles

J. H. Baxter Co., PO Box 10797, Eugene, OR 97440
Poles and Piles

Conrad Wood Preserving, 3998 Wildwood Dr., North Bend, OR 97459
Poles and Piles

Kerr-McGee Chemical Corp. FPD, Box 25861, Oklahoma City, OK 73125
Poles and Piles

McCormick & Baxter Creosoting, Box 3048, Portland, OR 97208
Poles and Piles

National Wood Preservers, PO Drawer F, Havertown, PA 19083
Poles

Puerto Rico Wood Treat, Box 29228, Rio Piedras, PR 00929
Piles

Koppers Industries, Box 1725, Florence, SC 29503
Poles and Piles

Wheeler Consolidated, Box 8, Whitewood, SD 57793
Poles and Piles

Landale Forest Products, PO Box 328, Sweetwater, TN 37874
Poles

Conroe Creosoting, Box 9, Conroe, TX 77305
Poles and Piles

Garland Creosoting Co., PO Box 589, Longview, TX 75606
Poles and Piles

Hart Creosoting Co., Box 300, Jasper, TX 75951
Poles and Piles

W. J. Smith Wood Preserving, Box 703, Denison, TX 75020
Poles and Piles

Walker wood Preserving, Box 1217, Livingston, TX 77351
Piles

Utah Wood Preserving, 1959 S. 1100 W., Wood Cross, UT 84084
Poles

Atlantic Wood Industries, Box 340, Portsmouth, VA 23704
Poles and Piles

Koppers Industries, 4020 Koppers Rd., Salem, VA 24153
Poles

Wood Preservers, Box 1018, Warsaw, VA 22572
Poles and Piles

Oeser Co., PO Box 156, Bellingham, WA 98227
Poles and Piles

Pacific Wood Treating, 111 W. Division, Ridgefield, WA 98642
Poles and Piles

Wyckoff Company, 520 Pike St., #1220, Seattle, WA 98101
Poles and Piles

Koppers Industries, PO Box 397, Superior, WI 54880
Piles

Penta Wood Products, 8682 State Rd 70, Siren, WI 54872
Poles

Richardson Wood Preserving, Box 904, Sheboygan Falls, WI 53085
Piles

Webster Wood Preserving, Box 297, Bangor, WI 54614
Poles and Piles

Chesapeake Corp., Box 155, Route 453, Eutawville, SC 29048
Piles

Taylor Treating, PO Box 248, Sheridan, OR 97378
Poles and Piles

San Diego Wood Preserving, 2010 Haffley Ave., National City, CA 92050
Piles

Laminated Timbers

Structural Wood Systems - Greenville, AL

Unit Structures - Magnolia, AR

Sentinel Structures - Peshtigo, WI

Unadilla Laminators - Unadilla, N.Y.

Moisture Meters

Forestry Suppliers, Inc.
205 W. Rankin St.
P.O. Box G397
Jackson, MS 39204

Osmose Wood Preserving Inc.
980 Ellicott St.
Buffalo, N.Y. 14209

Timber Products Inspection, Inc.
P.O. Box 919
884 Blacklawn Rd.
Conyers, GA 30207

Wood Inspection Equipment

Forestry Suppliers, Inc., P.O. Box 8397, Jackson, MS 39204

Osmose Wood Preserving, Inc., 980 Ellicott St., Buffalo, N.Y. 14309

Timber Products Inspection, Inc., P.O. Box 919, 884 Blacklawn Rd, Conyers, GA 30207

Grounding Treatment Products

Osmose Wood Preserving Co.

Chapman Chemical Co.

Asplundh Pole Treating Co.

Pole Care Industries

Wood Pecker Repair Supplies

Osmose Wood Preserving Co.

Pole Care Industries

Chapman Chemical Co.

Index

B

Bandage Treatment, 14
Branding, 23

C

Carpenter Ants, 4
Certificate of Compliance, 22
Contractor Qualifications, 13
Cutting, 27

D

Decay,
 Detection, 4
 External Surface, 7
 Fungi, 1
 Insects, 7
 Internal, 7

E

Enhanced Preservative Treatments, 21

F

Fruiting Bodies, 4
Fumigant Treatment, 15
Fungi,
 Decay, 1

G

General Inspection Procedures, 24
Groundline Treatment, 14

H

Handling and Storage, 28

I

Incising, 18
Inspection Procedures, 7
 Biological Tests, 12
 Boring, 9
 Culturing, 12
 Decay, 8
 Determination of Serviceability, 12
 Insect Identification, 12
 Mechanical, 8
 Physical Tests, 8
 Shell Thickness Indicator, 9
 Sounding, 9
 Termites and Carpenter Ants, 8
 Vertebrate Organisms, 8
 visual, 7

M

Machining, 27
Maintenance Procedures, 2
Marking, 23

O

Oilborne Preservatives, 14

P

Pesticides, 1
Piles, 23
Pilodyn, 4
Plant Inspection, 23
Pole Performance Evaluation (In-Service), 21
Pole Top Protection, 17
Preservatives,
 Waterborne, 14
Pressure Preservative Treatments, 18

Q

Quality Assurance
New Products, 22

V

Vertebrate Organisms, 8
Visual Decay Detection, 4

W

Waterborne Preservatives, 14
Wood Pole Inspection, 2

R

Record Keeping, 29
Reference Guides, 28
Remedial Treatment, 13
 Bandage, 14
 Groundline, 14
 Internal Void, 15
Restoration,
 Pole Strength, 17
Review,
 Technical Procurement, 27

S

Shell Thickness Indicator, 9
Shigometer, 4
Superficial Preservative Treat-
ments, 13

T

Technical Assistance, 28
Technical Procurement Review,
27
Termites, 8
Treatment,
 Bandage, 14
 Fumigant, 15
 Groundline, 14
 Internal Void, 15
 Remedial, 13