

---

# **International Docking System Standard (IDSS) Interface Definition Document (IDD)**

September 21, 2010

[illegible]

**TABLE OF CONTENTS**

<b>1</b>	<b>INTRODUCTION .....</b>	<b>1</b>
1.1	Purpose and Scope .....	1
1.2	Responsibility and Change Authority – TBD .....	1
1.3	Convention and Notation – TBD .....	1
1.4	Docking Principles – TBD .....	1
1.5	Berthing .....	1
<b>2</b>	<b>APPLICABLE AND REFERENCE DOCUMENTS – TBD .....</b>	<b>2</b>
<b>3</b>	<b>INTERNATIONAL DOCKING SYSTEM STANDARD .....</b>	<b>2</b>
3.1	General - TBD .....	2
3.1.1	System Description- TBD .....	2
3.1.2	Engineering Units of Measure .....	2
3.1.3	Coordinate System .....	2
3.2	Mating Interface Definition .....	2
3.2.1	Soft-Capture System .....	4
3.2.2	Hard-Capture System .....	8
3.3	Loads .....	14
3.3.1	Hard Capture Mated Loads .....	14
3.3.2	Soft Capture Loads .....	15
<b>4</b>	<b>REFERENCE MISSIONS - TBD .....</b>	<b>15</b>
	<b>APPENDIX .....</b>	<b>16</b>

**TABLE OF FIGURES**

Figure 3.2-1:	Androgynous Docking Interface - Axial View.....	3
Figure 3.2-2:	Androgynous Docking Interface - Cross Section.....	3
Figure 3.2.1-1:	SCS Interface .....	4
Figure 3.2.1-2:	SCS Interface – Guide Petal System Overview.....	5
Figure 3.2.1-3:	SCS Interface – Guide Petal System Details.....	5
Figure 3.2.1-4:	SCS Interface – Guide Petal Profile .....	6
Figure 3.2.1-5:	SCS Interface – Passive Mode Capture Ring Profile .....	7
Figure 3.2.1-6:	SCS Interface – Active Mode Capture Ring Profile .....	7
Figure 3.2.2-1:	HCS Interface - Axial View .....	8
Figure 3.2.2-2:	HCS Interface - Sensor Striker Zone .....	9
Figure 3.2.2-3:	HCS Hooks - Side View .....	10
Figure 3.2.2-4:	HCS Active Hook .....	11
Figure 3.2.2-5:	HCS Passive Hook .....	12
Figure 3.2.2-6:	Guide Pin Details .....	13
Figure 3.2.2-7:	Guide Pin Hole Details.....	14

**LIST OF TABLES**

Table 3.3.1-1:	HCS Maximum Mated Loads .....	14
Table 3.3.1-2:	HCS Mated Load Sets .....	14
Table 3.3.2-1:	SCS Maximum Interface Loads .....	15
Table 3.3.2-2:	SCS Maximum Component Loads.....	15

## 1 INTRODUCTION

The IDSS IDD is the result of a working group established in 2009 by the International Space Station partners (the Canadian Space Agency (CSA), the European Space Agency (ESA), the Ministry of Education, Culture, Sports, Science and Technology (MEXT) assisted by the Japan Aerospace Exploration Agency (JAXA), the National Aeronautics and Space Administration (NASA), and the Russian Space Agency (Roscosmos)). This collaboration is the result of this endeavor.

The figures and tables in this initial IDSS IDD release depict the features of the docking interface. Some docking system features are defined by the basic IDD standard, some will be defined in the future and some are left to the discretion of the individual docking system designer.

This IDSS IDD contains a subset of the family of figures and tables that are necessary to provide the description of IDSS physical interfaces. Some features are not ready to be baselined and are marked with a TBD/TBR/TBC. Additional text is required to address other docking requirements, docking principles, docking system general description, vehicle characteristics, initial contact conditions and environments. Additional revisions will be developed in order to incorporate the additional text.

### 1.1 Purpose and Scope

This Interface Definition Document (IDD) defines the interface characteristics and requirements of the IDSS, which is intended for uses ranging from crewed to autonomous space vehicles, and from Low Earth Orbit (LEO) to deep-space exploration missions.

This document defines the docking system interface definitions supporting the following missions:

- A. International Space Station (ISS)
- B. Lunar mission
- C. Crew rescue
- D. International cooperative demonstration

### 1.2 Responsibility and Change Authority – TBD

### 1.3 Convention and Notation – TBD

### 1.4 Docking Principles – TBD

### 1.5 Berthing

**NOTE:** The docking mechanism should not prevent berthing with a robotic arm that can provide a closing force of 150 N.

## **2 APPLICABLE AND REFERENCE DOCUMENTS – TBD**

## **3 INTERNATIONAL DOCKING SYSTEM STANDARD**

### **3.1 General - TBD**

#### **3.1.1 System Description- TBD**

#### **3.1.2 Engineering Units of Measure**

All dimensions are in millimeters. All angular dimensions are in degrees. Unless otherwise specified, the dimensional tolerance is implied as follows:

xx implies  $xx \pm 2$  [TBR]

xx.x implies  $xx.x \pm 0.5$  [TBR]

xx° implies  $xx^\circ \pm 0.5^\circ$  [TBR]

#### **3.1.3 Coordinate System**

Figures within this document use a coordinate system intended for reference only as shown in Figures 3.2-1 and 3.2-2.

### **3.2 Mating Interface Definition**

The Hard Capture System (HCS) Mating Plane is defined as the seal plane between HCS Tunnels when structurally mated.

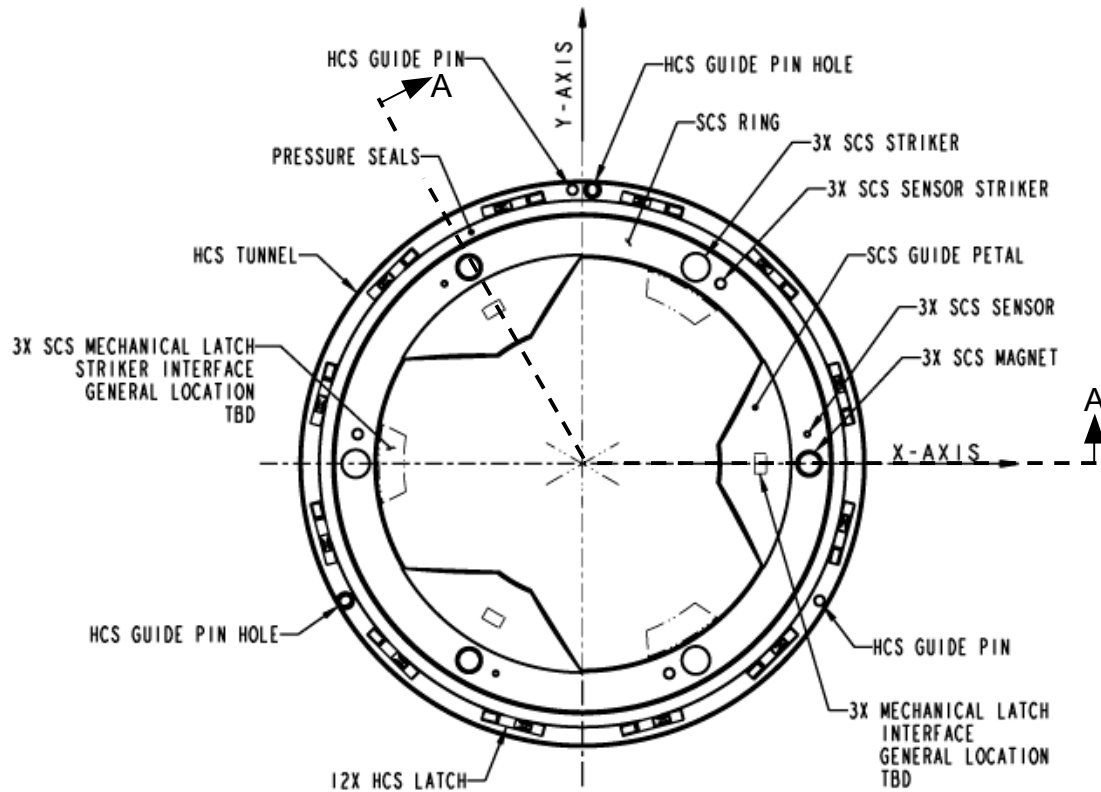
The Soft Capture System (SCS) Mating plane is defined as follows:

The SCS Mating Plane is the plane normal to the Soft Capture Ring's axis and intersects the conic outline of the Guide Petals at a diameter of 1045 mm (TBC).

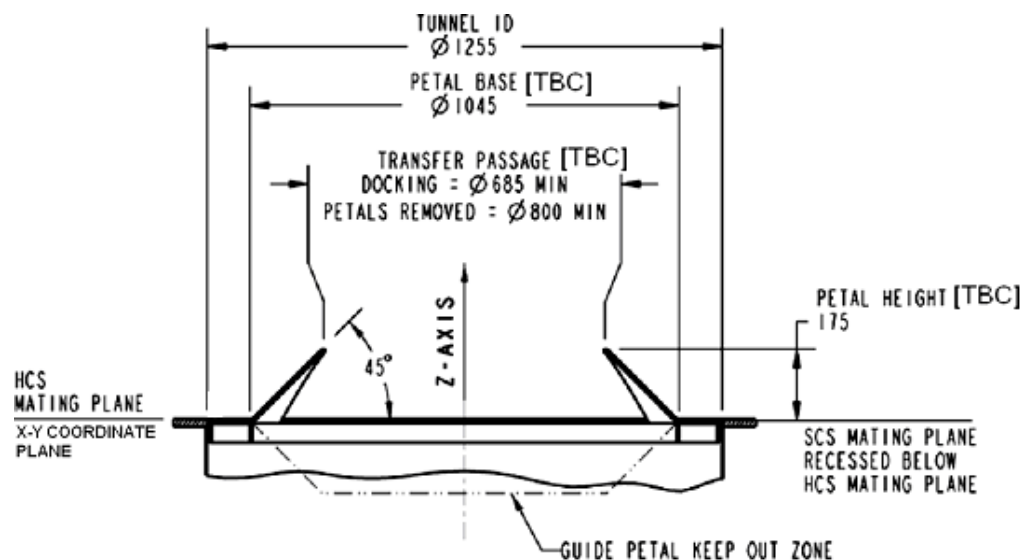
In the case of Magnetic Soft Capture, the Soft Capture Ring is stowed in the passive mode, the magnetic Strikers are co-planar with the SCS Mating Plane. When the Soft Capture Ring is in the active mode, the Magnets are co-planar with the SCS Mating Plane and the Strikers shall be at least 1.5mm below this plane.

**CONTROLLED DATA**

Verify this is the correct version before use



**Figure 3.2-1: Androgynous Docking Interface - Axial View**



**NOTE:** Cross-section through mid-plane of two petals (Section A-A, Figure 3.2-1).

**Figure 3.2-2: Androgynous Docking Interface - Cross Section**

### CONTROLLED DATA

Verify this is the correct version before use

### 3.2.1 Soft-Capture System

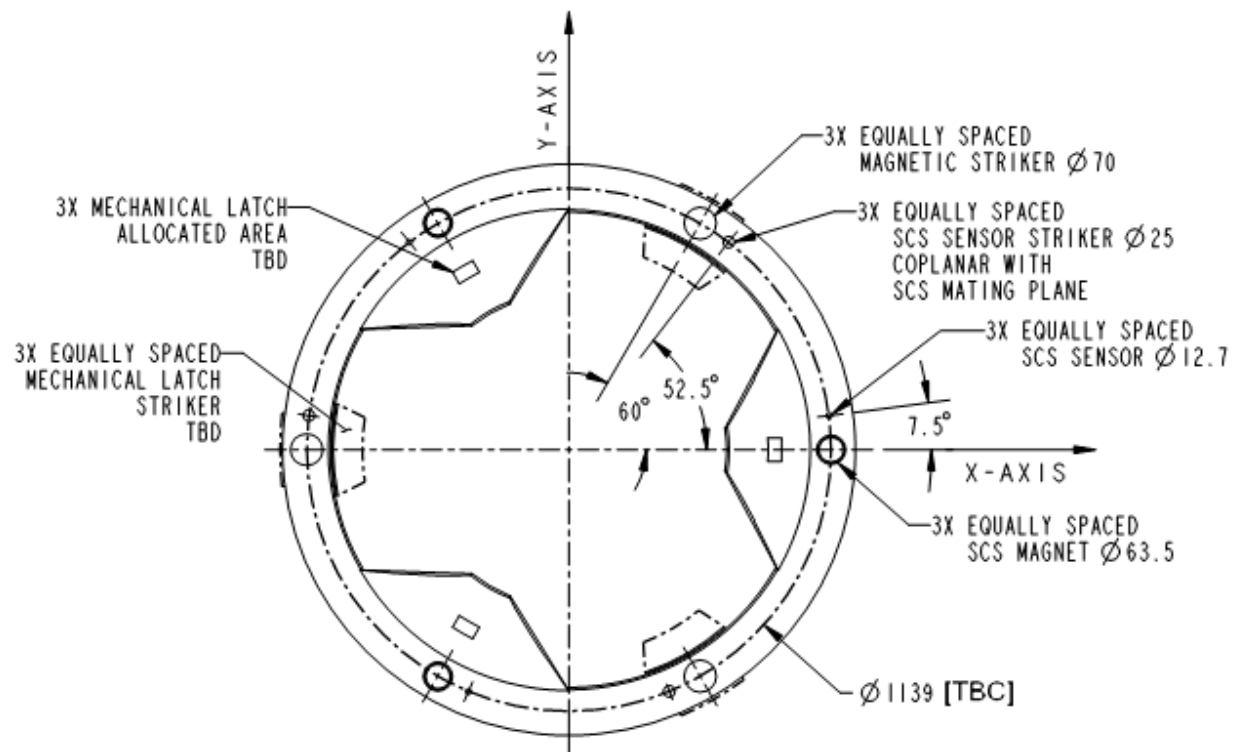
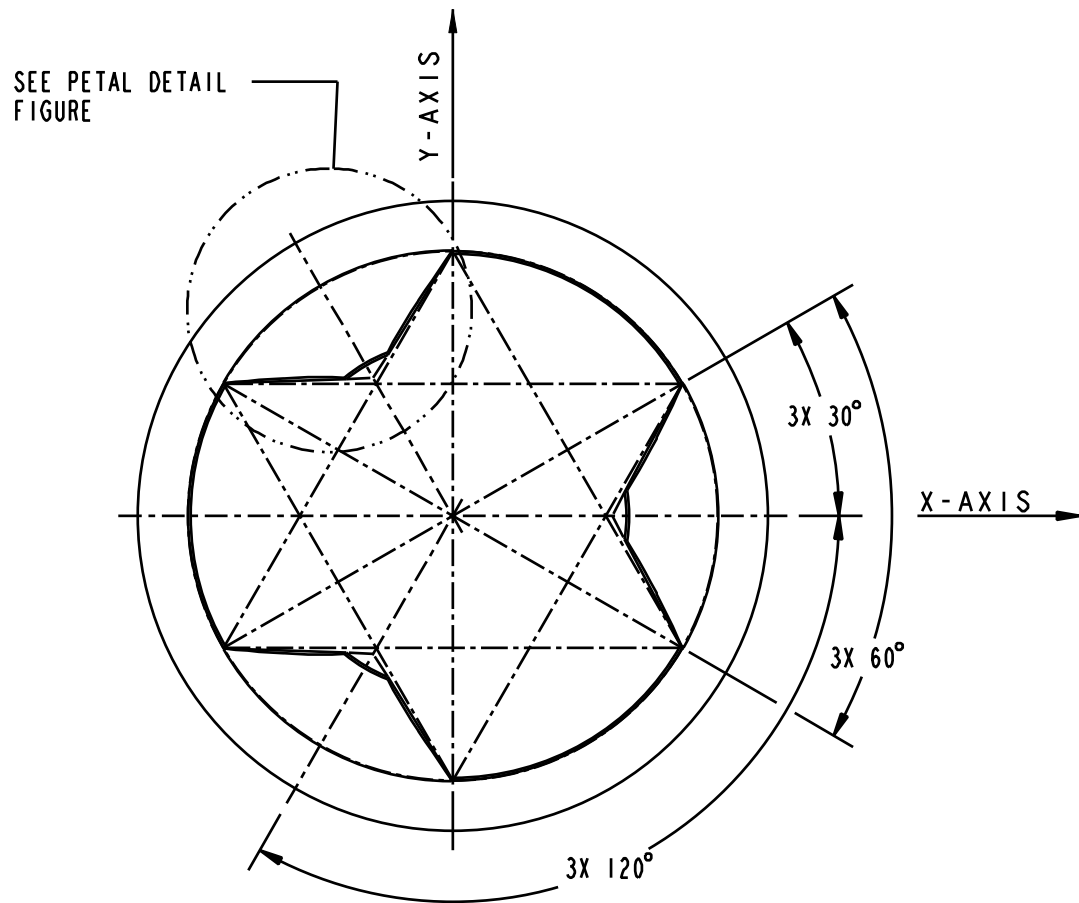


Figure 3.2.1-1: SCS Interface

**CONTROLLED DATA**

Verify this is the correct version before use





**Figure 3.2.1-2: SCS Interface – Guide Petal System Overview**

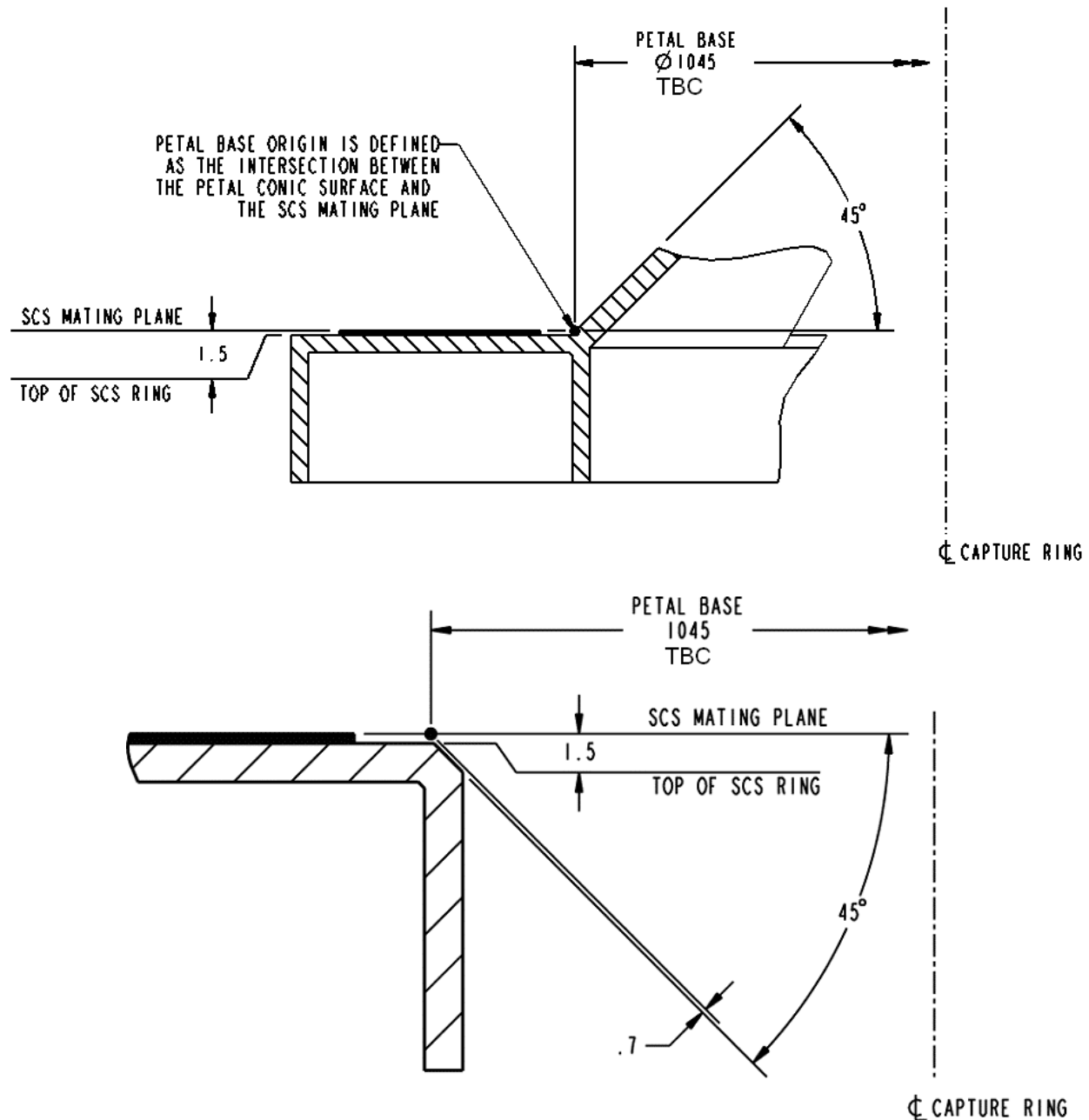


**NOTE:** Dimensions projected on the SCS mating plane are shown.  
Petal outline shown is on the external conic surface of the petal system.  
Petal thickness is not shown for clarity.

**Figure 3.2.1-3: SCS Interface – Guide Petal System Details**

### CONTROLLED DATA

Verify this is the correct version before use

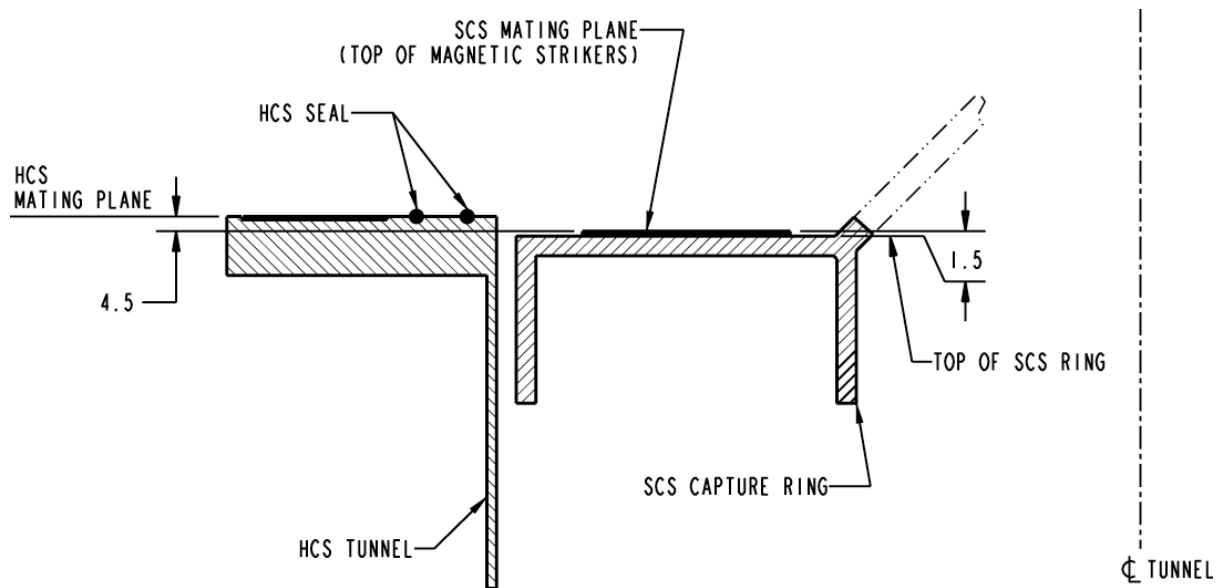


**NOTE:** Upper view indicates cross section of the capture ring through a guide petal.  
Lower view indicates cross section of the capture ring between the guide petals.

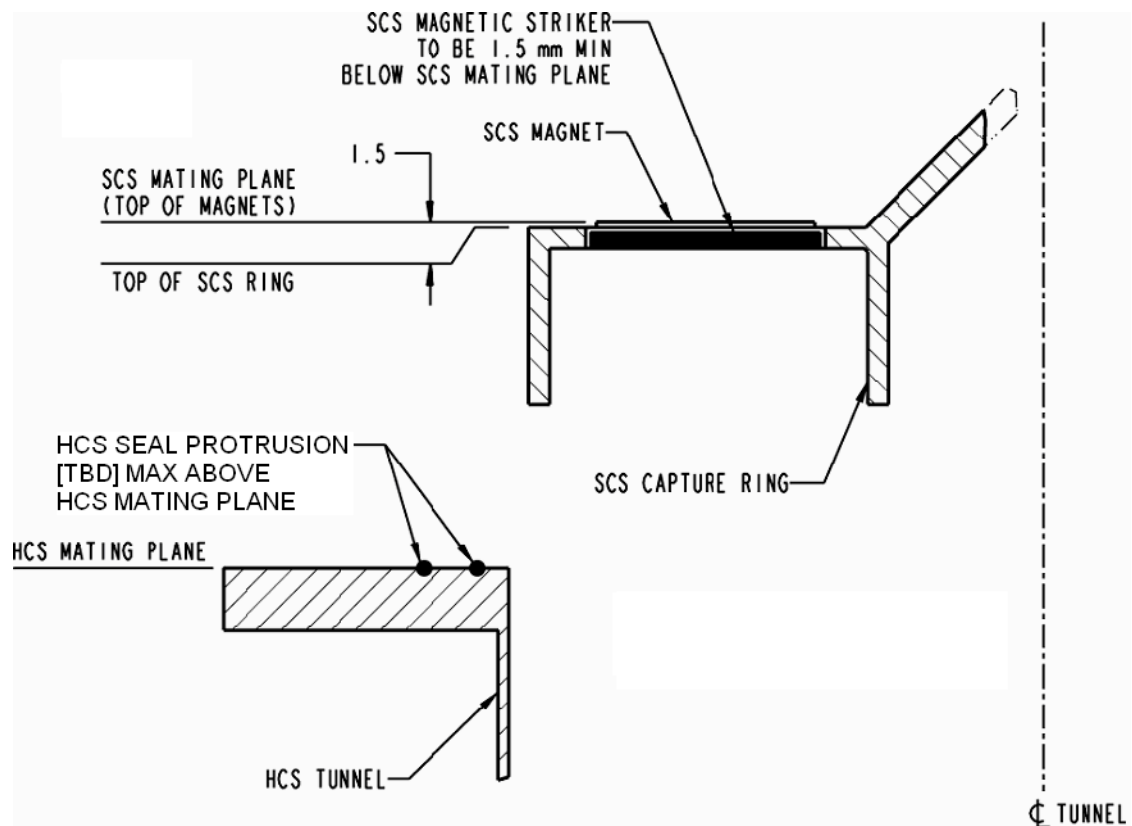
**Figure 3.2.1-4: SCS Interface – Guide Petal Profile**

**CONTROLLED DATA**

Verify this is the correct version before use



**Figure 3.2.1-5: SCS Interface – Passive Mode Capture Ring Profile**



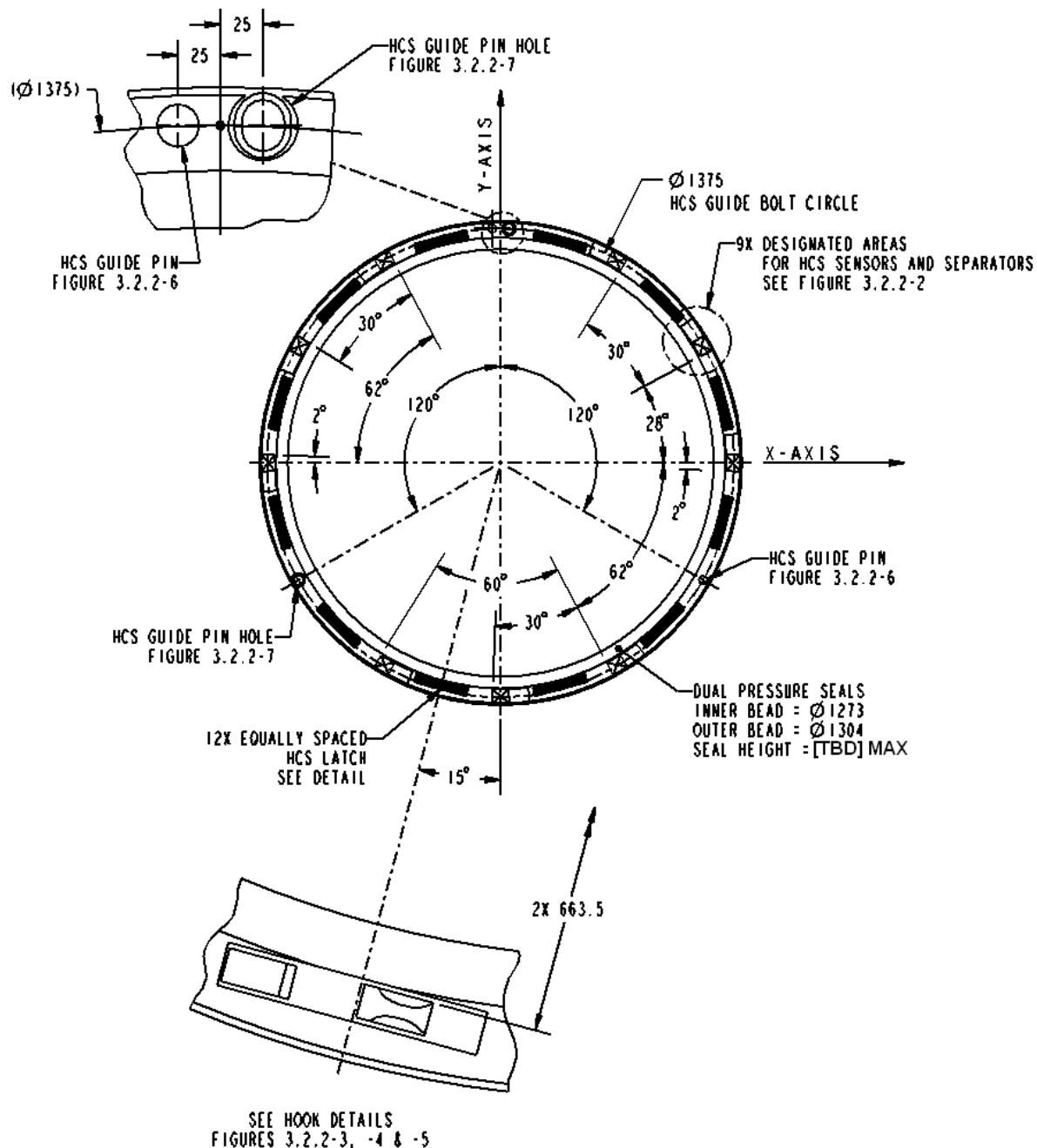
**Figure 3.2.1-6: SCS Interface – Active Mode Capture Ring Profile**

**CONTROLLED DATA**

Verify this is the correct version before use

### 3.2.2 Hard-Capture System

The Hard-Capture System (HCS) is depicted in the following figures. HCS components that are not critical for transferring mated loads or maintaining pressurization are intentionally omitted. Designated striker regions are identified for participants to configure peripheral hardware (Separation System and Sensors).

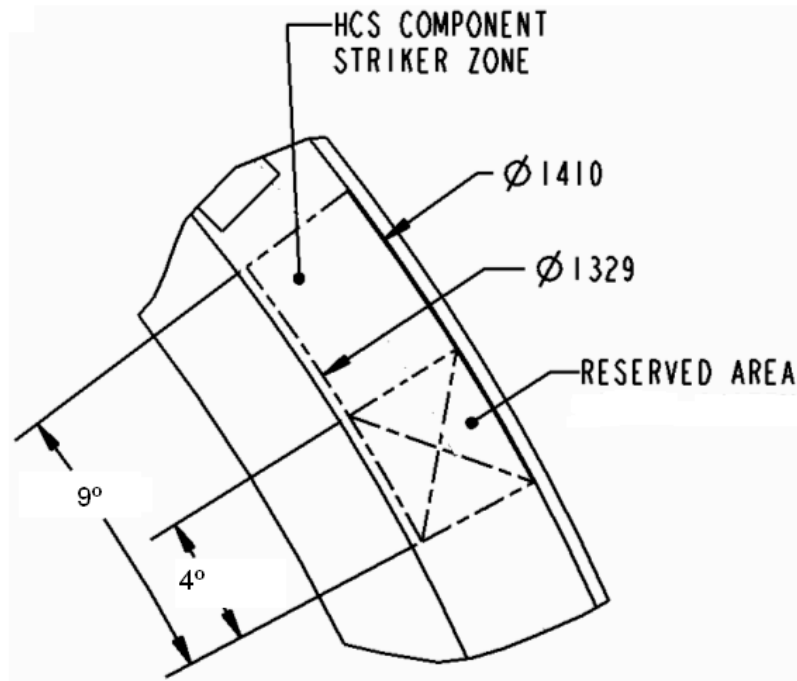


**NOTE:** Separation systems shall be retracted below the HCS mating plane prior to closure of HCS interface (TBC).

**Figure 3.2.2-1: HCS Interface - Axial View**

**CONTROLLED DATA**

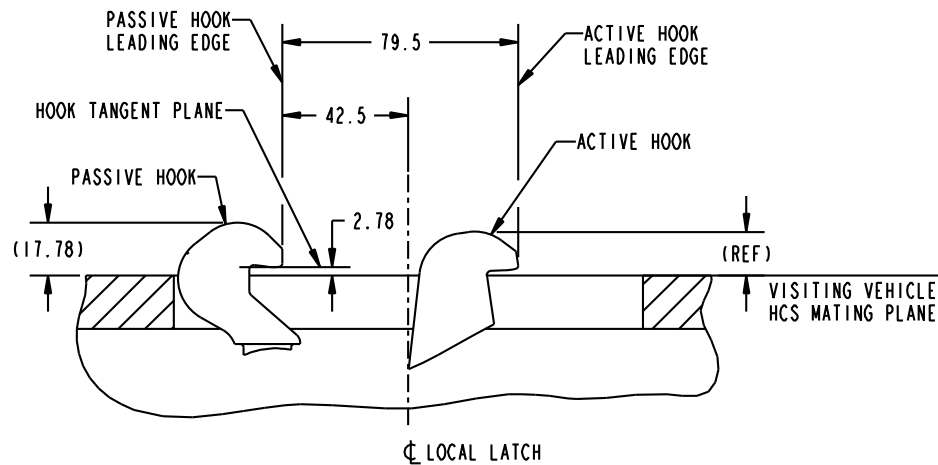
Verify this is the correct version before use

**NOTES:**

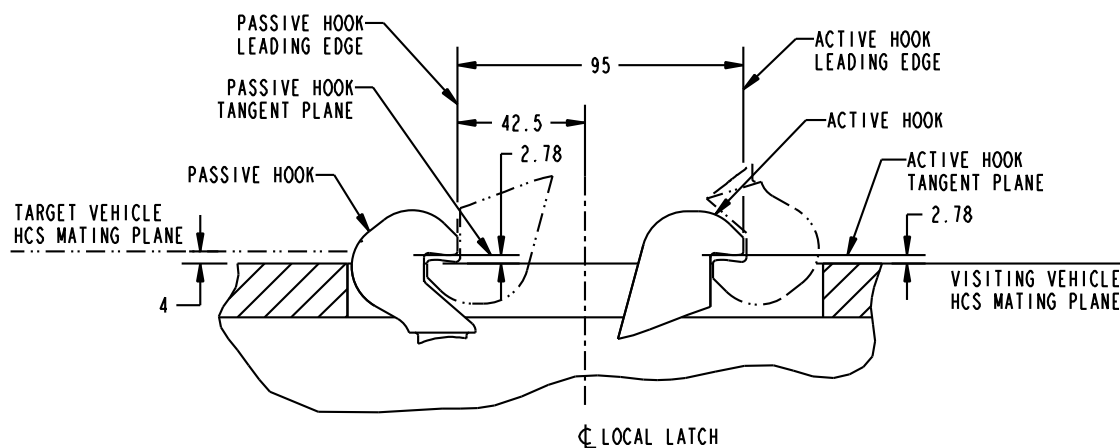
- a) "HCS Component Striker Zone" is to depict the area for any international partner's components to strike. This zone provides the area for HCS sensors and Separation Mechanisms to contact.
- b) "Reserved Area" is the area inside the "HCS Component Striker Zone" for legacy HCS components and strikes.
- c) "HCS Component Striker Zone" and "Reserved Area" are recessed 1mm from HCS mating plane
- d) HCS Component Striker Zone may contain features that require accommodation. See Appendix (TBD) for details.

**Figure 3.2.2-2: HCS Interface - Sensor Striker Zone****CONTROLLED DATA**

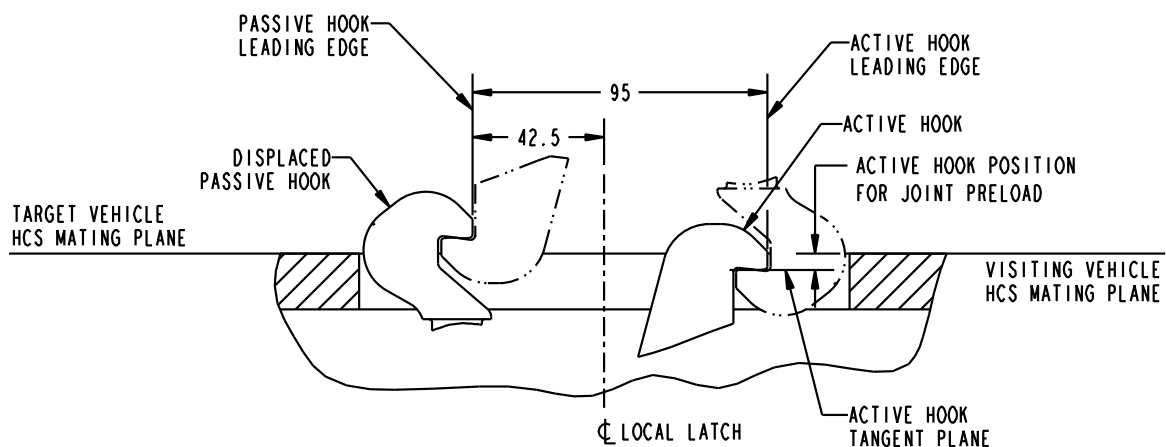
Verify this is the correct version before use



READY-TO-DOCK CONFIGURATION



READY-TO-HOOK CONFIGURATION

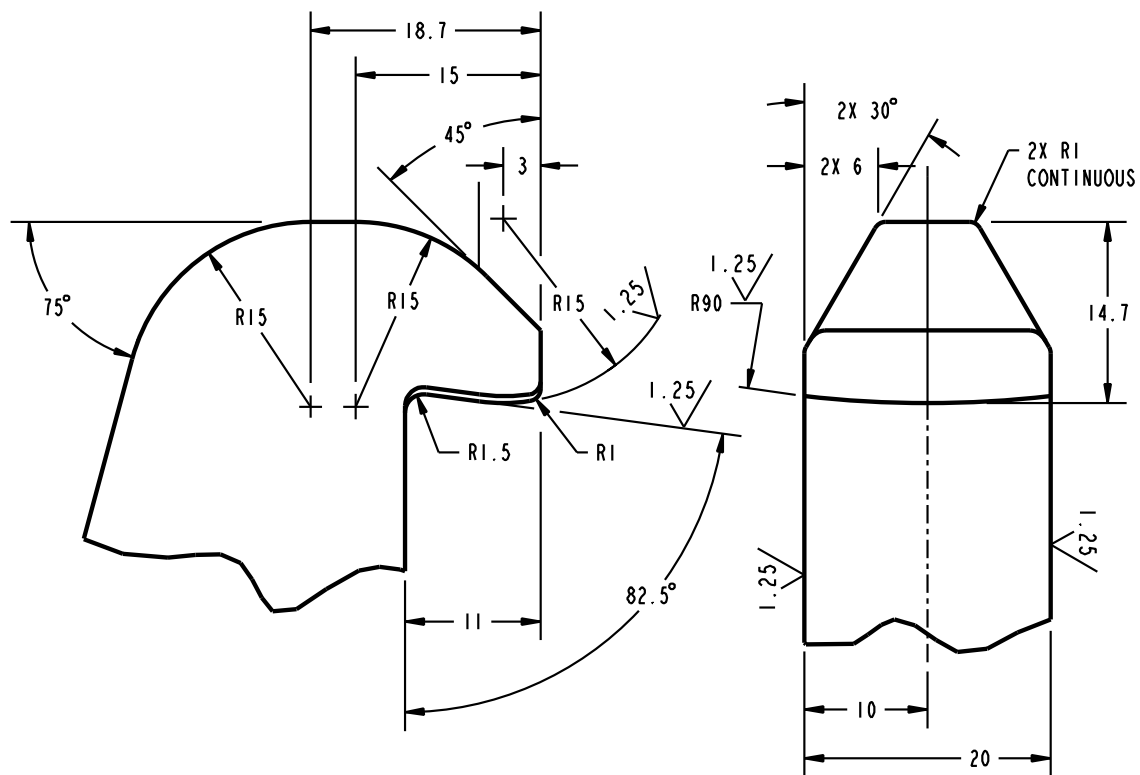


FULLY MATED CONFIGURATION

Figure 3.2.2-3: HCS Hooks - Side View

**CONTROLLED DATA**

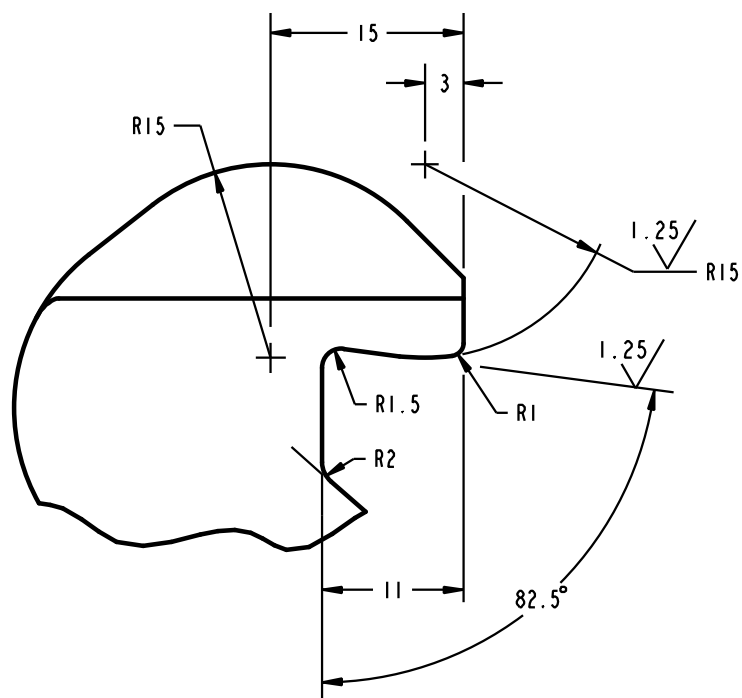
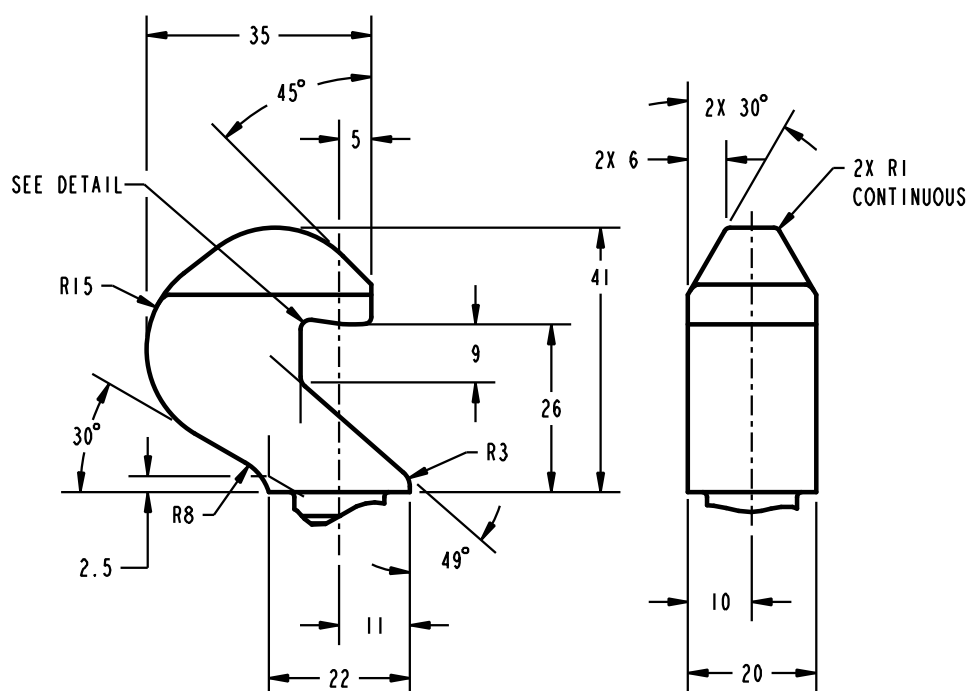
Verify this is the correct version before use



**Figure 3.2.2-4: HCS Active Hook**

**CONTROLLED DATA**

Verify this is the correct version before use



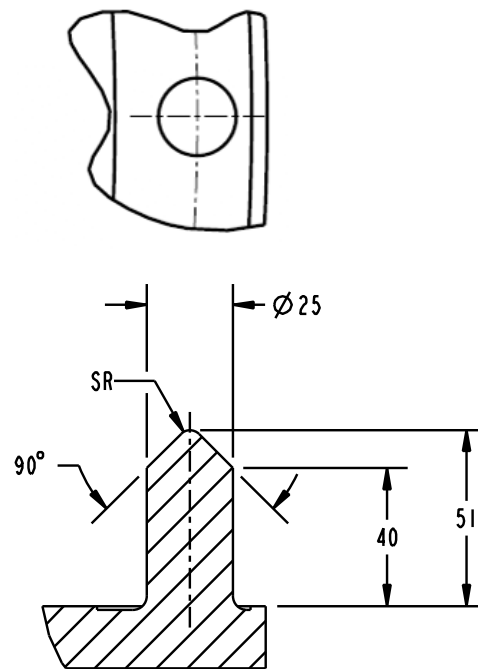
DETAIL VIEW

Figure 3.2.2-5: HCS Passive Hook

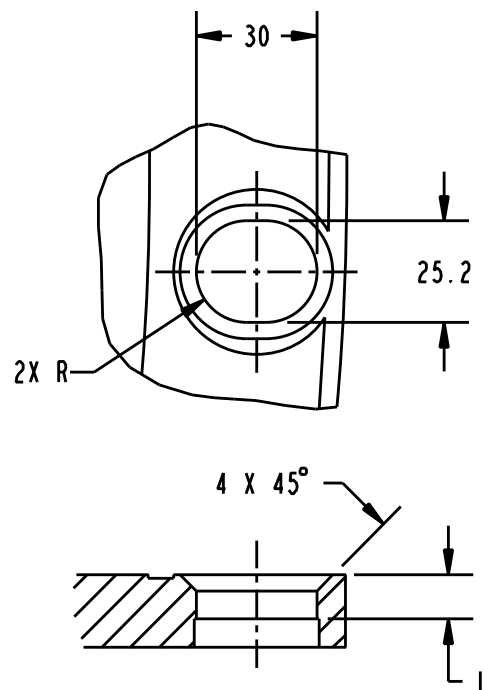
**CONTROLLED DATA**

Verify this is the correct version before use





**Figure 3.2.2-6: Guide Pin Details**



**Figure 3.2.2-7: Guide Pin Hole Details****3.3 Loads****3.3.1 Hard Capture Mated Loads****Table 3.3.1-1: HCS Maximum Mated Loads**

	Mated ISS	Trans-Lunar
Maximum Design Pressure	1 100 hPa	0 h Pa
Seal Closure Force	24 000 N/m	24 000 N/m
Compressive Axial Load	17 700 N	300 000 N
Tensile Axial Load	17 700 N	100 000 N
Shear Load	16 700 N	10 000 N
Torsion Moment	15 000 Nm	15 000 Nm
Bending Moment	68 700 Nm	40 000 Nm

**Table 3.3.1-2: HCS Mated Load Sets**

Load Set	Case 1	Case 2	Case 3	Case 4
Compressive Axial	5 000 N	17 700 N	13 700 N	300 000 N
Tensile Axial	5 000 N	17 700 N	13 700 N	100 000 N
Shear	5 000 N	14 800 N	16 700 N	10 000 N
Torsion	15 000 Nm	15 000 Nm	15 000 Nm	15 000 Nm
Bending	65 300 Nm	39 200 Nm	68 700 Nm	40 000 Nm

**Notes for Tables 3.3.1-1 and 3.3.1-2**

- a) Values are design limit loads.
- b) Hard capture hook preload and tunnel stiffness will be such that, when under external loading within limits, there remains metal-to-metal contact in the local vicinity of the hooks.
- c) Seal closure force to be included in all cases in Table 3.3.1-2.
- d) Cases 1 through 3 in Table 3.3.1-2 are pressurized mated cases.
- e) Case descriptions:
  - i) Case 1 – Attitude control by Orbiter-like, combined with crew activity.
  - ii) Case 2 – Berthing of ISS segment while mated.
  - iii) Case 3 – Orbiter-like translation with payload attached to ODS.

**CONTROLLED DATA**

Verify this is the correct version before use

- iv) Case 4 – TLI-like, modified from Constellation analysis. Not pressurized.

### 3.3.2 Soft Capture Loads

**Table 3.3.2-1: SCS Maximum Interface Loads**

Tension	3 900 N
Compression (Static)	3 500 N
Compression (Dynamic, < 0.1 sec)	6500 N (TBC)
Shear	3 200 N
Torsion	1 500 Nm
Bending	2 800 Nm

**Table 3.3.2-2: SCS Maximum Component Loads**

Mechanical Latch Striker Tension	3 000 N			
Magnetic Latch Striker Tension	2 300 N			
Striker Compression	3 000 N			
Petal Edge Length	0%	10%	60%	80%
Petal Contact Loads	3500 N	2300 N	2300 N	1000 N

**Notes for Tables 3.3.2-1 and 3.3.2-2**

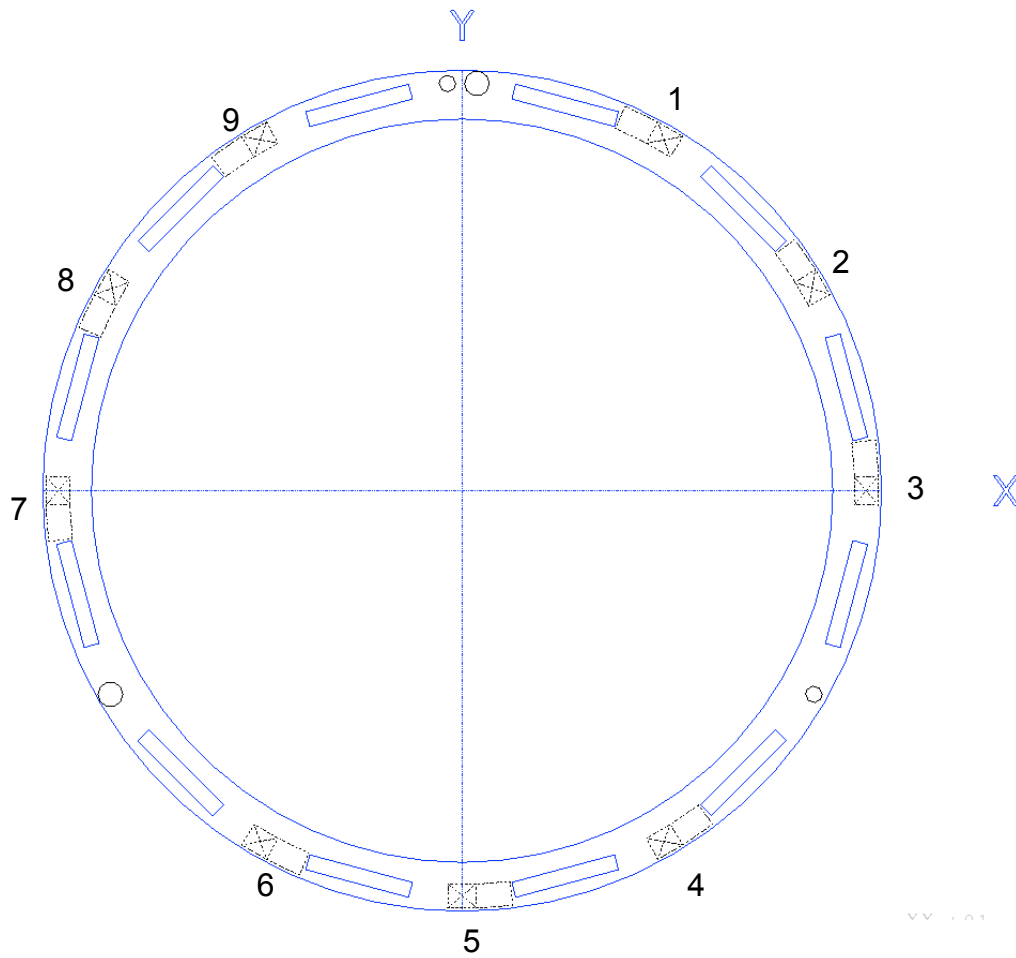
- Values are design limit loads.
- Values in Table 3.3.2-1 are defined at the center of the SCS mating plane (Figure 3.2.1-5).
- Values are  $3\sigma$  maxima and are to be applied simultaneously as provided in Table 3.3.2-1, not to exceed the component values in Table 3.3.2-2.
- Shear and bending loads are vector sums in the plane of the SCS mating plane (Figure 3.2.1-5).
- The active soft capture system must meet all of its functional and performance requirements without exceeding loads defined in Table 3.3.2-1.
- The passive soft capture interface, or active soft capture system in the passive mode, must meet all of its functional and performance requirements during and after exposure to loads defined in Table 3.3.2-1 and Table 3.3.2-2.
- The petal contact load is applied to the edge of the petal or the outer face of the petal. The load can only be applied to the petal edge from the root of the petal to 80% of the petal length. The load can only be applied to the outer face from the root of the petal to 60% of the petal length from the base.

## 4 REFERENCE MISSIONS - TBD

### CONTROLLED DATA

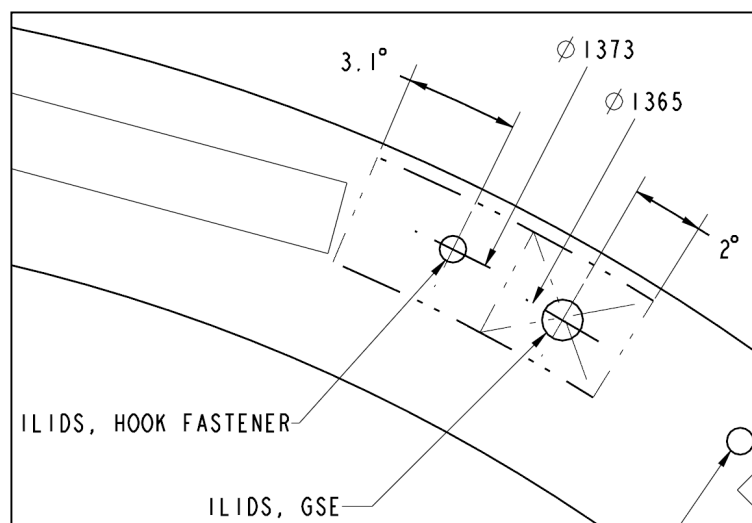
Verify this is the correct version before use

## APPENDIX

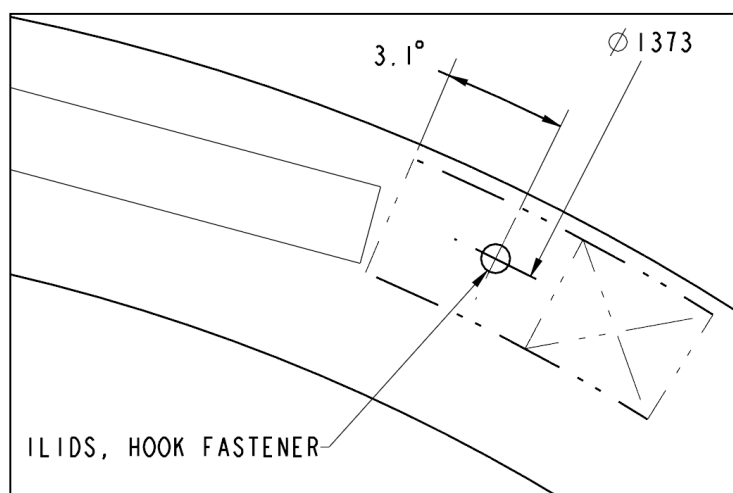


**APAS Striker Zone Violations (TBD):**

# **iLIDS Striker Zone Violations:**



Detail Applies at the following  
locations:  
1, 3, 4, 6, 7, 9



Detail Applies at the following  
locations:  
2, 5, 8

**CONTROLLED DATA**  
Verify this is the correct version before use