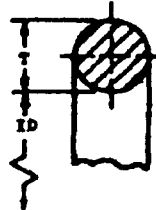
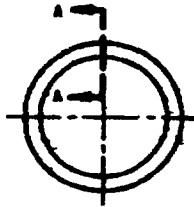


**MS9955**PDB. SUP CLASS  
9330

SECTION A-A

PART NUMBER	ID IN.		ID (mm)		T IN.		T (mm)		APPROX MASS	
	MIN	MAX	MIN	MAX	MIN	MAX	MIN	MAX	LB/100	KG/100
MS9955-001	0.025	0.033	0.635	0.830	0.037	0.043	0.940	1.092	.002	.0009
MS9955-002	0.030	0.040	0.905	1.165	0.047	0.053	1.194	1.346	.005	.002
MS9955-003	0.033	0.040	1.330	1.580	0.057	0.063	1.486	1.638	.008	.003
MS9955-004	0.040	0.050	1.67	1.90	0.067	0.073	1.778	1.930	.013	.006
MS9955-005	0.040	0.050	2.00	2.20	0.067	0.073	2.000	2.200	.018	.007
MS9955-006	0.100	0.110	2.77	3.02	0.067	0.073	2.702	2.854	.017	.009
MS9955-007	0.100	0.100	3.00	3.01	0.067	0.073	2.702	2.854	.020	.009
MS9955-008	0.171	0.181	4.34	4.60	0.067	0.073	2.702	2.854	.023	.010
MS9955-009	0.203	0.213	5.16	5.41	0.067	0.073	2.702	2.854	.027	.012
MS9955-010	0.234	0.244	5.94	6.20	0.067	0.073	2.702	2.854	.027	.013
MS9955-011	0.294	0.304	7.52	7.77	0.067	0.073	2.702	2.854	.035	.016
MS9955-012	0.359	0.369	9.12	9.37	0.067	0.073	2.702	2.854	.041	.019
MS9955-013	0.421	0.431	10.69	10.95	0.067	0.073	2.702	2.854	.047	.021
MS9955-014	0.484	0.494	12.29	12.55	0.067	0.073	2.702	2.854	.053	.024
MS9955-015	0.546	0.556	13.87	14.12	0.067	0.073	2.702	2.854	.058	.026
MS9955-016	0.609	0.619	15.47	15.72	0.067	0.073	2.702	2.854	.065	.029
MS9955-017	0.671	0.681	17.04	17.30	0.067	0.073	2.702	2.854	.070	.032
MS9955-018	0.734	0.744	18.64	18.90	0.067	0.073	2.702	2.854	.076	.034
MS9955-019	0.795	0.807	20.19	20.50	0.067	0.073	2.702	2.854	.082	.037
MS9955-020	0.858	0.870	21.79	22.10	0.067	0.073	2.702	2.854	.088	.040
MS9955-021	0.920	0.932	23.37	23.67	0.067	0.073	2.702	2.854	.094	.043
MS9955-022	0.983	0.995	24.97	25.27	0.067	0.073	2.702	2.854	.100	.045
MS9955-023	1.045	1.057	26.54	26.85	0.067	0.073	2.702	2.854	.106	.048
MS9955-024	1.108	1.120	28.14	28.45	0.067	0.073	2.702	2.854	.112	.051
MS9955-025	1.170	1.182	29.72	30.02	0.067	0.073	2.702	2.854	.118	.054
MS9955-026	1.233	1.245	31.32	31.62	0.067	0.073	2.702	2.854	.123	.056
MS9955-027	1.295	1.307	32.89	33.20	0.067	0.073	2.702	2.854	.129	.059
MS9955-028	1.358	1.370	34.49	34.80	0.067	0.073	2.702	2.854	.135	.061
MS9955-029	1.420	1.432	36.07	36.37	0.067	0.073	2.702	2.854	.141	.064
MS9955-030	1.483	1.495	37.67	37.97	0.067	0.073	2.702	2.854	.147	.067
MS9955-031	1.545	1.557	39.25	39.55	0.067	0.073	2.702	2.854	.153	.070
MS9955-032	1.608	1.620	40.84	41.14	0.067	0.073	2.702	2.854	.159	.073
MS9955-033	1.670	1.682	42.42	42.72	0.067	0.073	2.702	2.854	.165	.076
MS9955-034	1.733	1.745	44.00	44.30	0.067	0.073	2.702	2.854	.171	.078
MS9955-035	1.795	1.807	45.58	45.88	0.067	0.073	2.702	2.854	.177	.081
MS9955-036	1.858	1.870	47.16	47.46	0.067	0.073	2.702	2.854	.183	.084
MS9955-037	1.920	1.932	48.74	49.04	0.067	0.073	2.702	2.854	.189	.087
MS9955-038	1.983	1.995	50.32	50.62	0.067	0.073	2.702	2.854	.195	.090
MS9955-039	2.045	2.057	51.90	52.20	0.067	0.073	2.702	2.854	.201	.093
MS9955-040	2.108	2.120	53.48	53.78	0.067	0.073	2.702	2.854	.207	.096
MS9955-041	2.170	2.182	55.06	55.36	0.067	0.073	2.702	2.854	.213	.099
MS9955-042	2.233	2.245	56.64	56.94	0.067	0.073	2.702	2.854	.219	.102
MS9955-043	2.295	2.307	58.22	58.52	0.067	0.073	2.702	2.854	.225	.105
MS9955-044	2.358	2.370	59.80	59.95	0.067	0.073	2.702	2.854	.231	.108
MS9955-045	2.420	2.432	61.38	61.63	0.067	0.073	2.702	2.854	.237	.111
MS9955-046	2.483	2.495	62.96	63.26	0.067	0.073	2.702	2.854	.243	.114
MS9955-047	2.545	2.557	64.54	64.84	0.067	0.073	2.702	2.854	.249	.117
MS9955-048	2.608	2.620	66.12	66.42	0.067	0.073	2.702	2.854	.255	.120
MS9955-049	2.670	2.682	67.70	67.95	0.067	0.073	2.702	2.854	.261	.123
MS9955-050	2.733	2.745	69.28	69.53	0.067	0.073	2.702	2.854	.267	.126
MS9955-051	2.795	2.807	70.86	71.16	0.067	0.073	2.702	2.854	.273	.129
MS9955-052	2.858	2.870	72.44	72.74	0.067	0.073	2.702	2.854	.279	.132
MS9955-053	2.920	2.932	74.02	74.32	0.067	0.073	2.702	2.854	.285	.135
MS9955-054	2.983	2.995	75.60	75.90	0.067	0.073	2.702	2.854	.291	.138
MS9955-055	3.045	3.057	77.18	77.48	0.067	0.073	2.702	2.854	.297	.141
MS9955-056	3.108	3.120	78.76	79.06	0.067	0.073	2.702	2.854	.303	.144
MS9955-057	3.170	3.182	80.34	80.64	0.067	0.073	2.702	2.854	.309	.147
MS9955-058	3.233	3.245	81.92	82.22	0.067	0.073	2.702	2.854	.315	.150
MS9955-059	3.295	3.307	83.50	83.80	0.067	0.073	2.702	2.854	.321	.153
MS9955-060	3.358	3.370	85.08	85.38	0.067	0.073	2.702	2.854	.327	.156
MS9955-061	3.420	3.432	86.66	86.96	0.067	0.073	2.702	2.854	.333	.159
MS9955-062	3.483	3.495	88.24	88.54	0.067	0.073	2.702	2.854	.339	.162
MS9955-063	3.545	3.557	89.82	90.12	0.067	0.073	2.702	2.854	.345	.165
MS9955-064	3.608	3.620	91.40	91.70	0.067	0.073	2.702	2.854	.351	.168
MS9955-065	3.670	3.682	92.98	93.28	0.067	0.073	2.702	2.854	.357	.171
MS9955-066	3.733	3.745	94.56	94.86	0.067	0.073	2.702	2.854	.363	.174
MS9955-067	3.795	3.807	96.14	96.44	0.067	0.073	2.702	2.854	.369	.177
MS9955-068	3.858	3.870	97.72	98.02	0.067	0.073	2.702	2.854	.375	.180
MS9955-069	3.920	3.932	99.30	99.60	0.067	0.073	2.702	2.854	.381	.183
MS9955-070	3.983	3.995	100.88	101.18	0.067	0.073	2.702	2.854	.387	.186
MS9955-071	4.045	4.057	102.46	102.76	0.067	0.073	2.702	2.854	.393	.189
MS9955-072	4.108	4.120	104.04	104.34	0.067	0.073	2.702	2.854	.399	.192
MS9955-073	4.170	4.182	105.62	105.92	0.067	0.073	2.702	2.854	.405	.195
MS9955-074	4.233	4.245	107.20	107.50	0.067	0.073	2.702	2.854	.411	.198
MS9955-075	4.295	4.307	108.78	109.08	0.067	0.073	2.702	2.854	.417	.201
MS9955-076	4.358	4.370	110.36	110.66	0.067	0.073	2.702	2.854	.423	.204
MS9955-077	4.420	4.432	111.94	112.24	0.067	0.073	2.702	2.854	.429	.207
MS9955-078	4.483	4.495	113.52	113.82	0.067	0.073	2.702	2.854	.435	.210
MS9955-079	4.545	4.557	115.10	115.40	0.067	0.073	2.702	2.854	.441	.213
MS9955-080	4.608	4.620	116.68	116.98	0.067	0.073	2.702	2.854	.447	.216
MS9955-081	4.670	4.682	118.26	118.56	0.067	0.073	2.702	2.854	.453	.219
MS9955-082	4.733	4.745	119.84	120.14	0.067	0.073	2.702	2.854	.459	.222
MS9955-083	4.795	4.807	121.42	121.72	0.067	0.073	2.702	2.854	.465	.225
MS9955-084	4.858	4.870	123.00	123.30	0.067	0.073	2.702	2.854	.471	.228
MS9955-085	4.920	4.932	124.58	124.88	0.067	0.073	2.702	2.854	.477	.231
MS9955-086	4.983	4.995	126.16	126.46	0.067	0.073	2.702	2.854	.483	.234
MS9955-087	5.045	5.057	127.74	128.04	0.067	0.073	2.702	2.854	.489	.237
MS9955-088	5.108	5.120	129.32	129.62	0.067	0.073	2.702	2.854	.495	.240
MS9955-089	5.170	5.182	130.90	131.20	0.067	0.073	2.702	2.854	.501	.243
MS9955-090	5.233	5.245	132.48	132.78	0.067	0.073	2.702	2.854	.507	.246
MS9955-091	5.295	5.307	134.06	134.36	0.067	0.073	2.702	2.854	.513	.249
MS9955-092	5.358	5.370	135.64	135.94	0.067	0.073	2.702	2.854	.519	.252
MS9955-093	5.420	5.432	137.22	137.52	0.067	0.073	2.702	2.854	.525	.255
MS9955-094	5.483	5.495	138.80	139.10	0.067	0.073	2.702	2.854	.531	.258
MS9955-095	5.545	5.557	140.38	140.68	0.067	0.073	2.702	2.854	.537	.261
MS9955-096	5.608	5.620	141.96	142.26	0.067	0.073	2.702	2.854	.543	.264
MS9955-097	5.670	5.682	143.54	143.84	0.067	0.073	2.702	2.854	.549	.267
MS9955-098	5.733	5.5								

**MS9955**FED SUP CLASS  
5330

PART NUMBER	ID IN.		ID (mm)		T IN.		T (mm)		APPROX MASS	
	MIN	MAX	MIN	MAX	MIN	MAX	MIN	MAX	LB/100	KG/100
MS9955-106	0.169	0.170	4.29	4.33	0.100	0.100	2.540	2.692	.057	.026
MS9955-107	0.201	0.211	5.11	5.26	0.100	0.100	2.540	2.692	.063	.029
MS9955-109	0.232	0.242	5.89	6.13	0.100	0.100	2.540	2.692	.069	.031
MS9955-109	0.294	0.304	7.47	7.72	0.100	0.100	2.540	2.692	.082	.037
MS9955-110	0.337	0.347	8.57	8.86	0.100	0.100	2.540	2.692	.085	.043
MS9955-111	0.440	0.449	10.90	10.99	0.100	0.100	2.540	2.692	.108	.049
MS9955-112	0.582	0.582	14.80	14.80	0.100	0.100	2.540	2.692	.120	.054
MS9955-113	0.594	0.594	15.07	15.07	0.100	0.100	2.540	2.692	.133	.060
MS9955-114	0.607	0.617	15.42	15.67	0.100	0.100	2.540	2.692	.146	.066
MS9955-115	0.609	0.609	15.49	15.49	0.100	0.100	2.540	2.692	.158	.072
MS9955-116	0.732	0.742	18.59	18.85	0.100	0.100	2.540	2.692	.172	.078
MS9955-117	0.793	0.803	20.16	20.45	0.100	0.100	2.540	2.692	.184	.083
MS9955-118	0.894	0.894	22.74	22.95	0.100	0.100	2.540	2.692	.197	.089
MS9955-119	0.918	0.938	23.32	23.82	0.100	0.100	2.540	2.692	.210	.095
MS9955-120	0.991	0.993	25.02	25.22	0.100	0.100	2.540	2.692	.222	.101
MS9955-121	1.093	1.099	27.69	28.00	0.100	0.100	2.540	2.692	.236	.107
MS9955-122	1.106	1.118	28.09	28.40	0.100	0.100	2.540	2.692	.248	.112
MS9955-123	1.168	1.168	29.67	29.97	0.100	0.100	2.540	2.692	.261	.118
MS9955-124	1.231	1.243	31.27	31.57	0.100	0.100	2.540	2.692	.274	.124
MS9955-125	1.293	1.303	32.86	33.15	0.100	0.100	2.540	2.692	.286	.130
MS9955-126	1.356	1.368	34.44	34.75	0.100	0.100	2.540	2.692	.299	.136
MS9955-127	1.418	1.430	36.02	36.32	0.100	0.100	2.540	2.692	.312	.142
MS9955-128	1.481	1.493	37.62	37.92	0.100	0.100	2.540	2.692	.324	.147
MS9955-129	1.544	1.559	39.20	39.60	0.100	0.100	2.540	2.692	.337	.153
MS9955-130	1.602	1.622	40.89	41.20	0.100	0.100	2.540	2.692	.350	.159
MS9955-131	1.664	1.684	42.27	42.77	0.100	0.100	2.540	2.692	.363	.165
MS9955-132	1.727	1.747	43.87	44.37	0.100	0.100	2.540	2.692	.376	.171
MS9955-133	1.789	1.809	45.46	45.95	0.100	0.100	2.540	2.692	.388	.176
MS9955-134	1.852	1.872	47.04	47.55	0.100	0.100	2.540	2.692	.401	.182
MS9955-135	1.915	1.935	48.64	49.15	0.100	0.100	2.540	2.692	.414	.188
MS9955-136	1.977	1.997	50.23	50.72	0.100	0.100	2.540	2.692	.427	.194
MS9955-137	2.040	2.060	51.82	52.32	0.100	0.100	2.540	2.692	.440	.200
MS9955-138	2.102	2.122	53.39	53.90	0.100	0.100	2.540	2.692	.452	.205
MS9955-139	2.165	2.185	54.99	55.50	0.100	0.100	2.540	2.692	.465	.211
MS9955-140	2.227	2.247	56.57	57.07	0.100	0.100	2.540	2.692	.477	.216
MS9955-141	2.290	2.310	58.17	58.67	0.100	0.100	2.540	2.692	.491	.223
MS9955-142	2.352	2.372	59.74	60.25	0.100	0.100	2.540	2.692	.503	.228
MS9955-143	2.415	2.435	61.34	61.85	0.100	0.100	2.540	2.692	.516	.234
MS9955-144	2.477	2.497	62.92	63.42	0.100	0.100	2.540	2.692	.529	.240
MS9955-145	2.540	2.560	64.52	65.02	0.100	0.100	2.540	2.692	.541	.245
MS9955-146	2.602	2.622	66.09	66.60	0.100	0.100	2.540	2.692	.555	.252
MS9955-147	2.665	2.685	67.56	68.07	0.100	0.100	2.540	2.692	.567	.257
MS9955-148	2.727	2.752	69.14	69.65	0.100	0.100	2.540	2.692	.580	.263
MS9955-149	2.789	2.815	70.74	71.25	0.100	0.100	2.540	2.692	.593	.269
MS9955-150	2.847	2.877	72.31	72.80	0.100	0.100	2.540	2.692	.605	.274
MS9955-151	2.912	2.932	73.99	74.49	0.100	0.100	2.540	2.692	.611	.286
MS9955-152	2.972	2.992	75.59	76.09	0.100	0.100	2.540	2.692	.622	.290
MS9955-153	3.032	3.052	77.19	77.69	0.100	0.100	2.540	2.692	.633	.295
MS9955-154	3.092	3.112	78.79	79.29	0.100	0.100	2.540	2.692	.644	.300
MS9955-155	3.152	3.172	80.39	80.89	0.100	0.100	2.540	2.692	.655	.305
MS9955-156	3.212	3.232	81.99	82.49	0.100	0.100	2.540	2.692	.666	.310
MS9955-157	3.272	3.292	83.59	84.09	0.100	0.100	2.540	2.692	.677	.315
MS9955-158	3.332	3.352	85.19	85.69	0.100	0.100	2.540	2.692	.688	.320
MS9955-159	3.392	3.412	86.79	87.29	0.100	0.100	2.540	2.692	.699	.325
MS9955-160	3.452	3.472	88.39	88.89	0.100	0.100	2.540	2.692	.710	.330

APPROVED 22 Dec 71 REVISION

P.A. Air Force-11 Other Code Navy - AS	INTERNATIONAL INTEREST	TITLE  PACKING PREFORMED - AMS 3669, 'O' RING	MILITARY STANDARD	
	ASCC 17/ET		MS9955	
PROCUREMENT SPECIFICATION NONE		SUPERSEDES	SHEET 2 OF 7	

DD FORM 672-1 (Limited coordination)

EDITION OF 1 SEP 67 NAVY USE ONLY

Review activities:  
Navy-AS, 2-85  
Air Force-2-85

This standard has been approved by the Dept of the Air Force (11) and the Department of the Navy (AS) and is hereby approved for use by all military and naval activity activities are required to comply with this standard where specified.

**MS9955**FED. SUP CLASS  
5330

PART NUMBER	ID IN.		ID (mm)		T IN.		T (mm)		APPROX MASS	
	MIN	MAX	MIN	MAX	MIN	MAX	MIN	MAX	LB/100	kg/100
MS9955-161	5.444	5.510	139.79	139.94	0.100	0.104	2.540	2.692	1.141	.518
MS9955-162	5.714	5.760	145.14	146.30	0.100	0.104	2.540	2.692	1.193	.541
MS9955-163	5.964	6.010	151.49	152.45	0.100	0.104	2.540	2.692	1.243	.564
MS9955-164	6.214	6.260	157.84	158.80	0.100	0.104	2.540	2.692	1.293	.588
MS9955-165	6.464	6.510	164.19	165.15	0.100	0.104	2.540	2.692	1.343	.610
MS9955-166	6.714	6.760	170.54	171.70	0.100	0.104	2.540	2.692	1.393	.633
MS9955-167	6.964	7.010	176.89	178.05	0.100	0.104	2.540	2.692	1.443	.656
MS9955-168	7.207	7.267	183.04	184.56	0.100	0.104	2.540	2.692	1.498	.679
MS9955-169	7.457	7.517	189.41	190.93	0.100	0.104	2.540	2.692	1.548	.702
MS9955-170	7.707	7.767	195.76	197.28	0.100	0.104	2.540	2.692	1.600	.726
MS9955-171	7.957	8.017	202.11	203.63	0.100	0.104	2.540	2.692	1.650	.748
MS9955-172	8.207	8.267	208.46	209.98	0.100	0.104	2.540	2.692	1.701	.772
MS9955-173	8.457	8.517	214.81	216.33	0.100	0.104	2.540	2.692	1.753	.795
MS9955-174	8.707	8.767	221.16	222.68	0.100	0.104	2.540	2.692	1.803	.818
MS9955-175	8.957	9.017	227.51	229.03	0.100	0.104	2.540	2.692	1.854	.841
MS9955-176	9.207	9.267	233.86	235.38	0.100	0.104	2.540	2.692	1.906	.865
MS9955-177	9.457	9.517	240.21	241.73	0.100	0.104	2.540	2.692	1.956	.887
MS9955-178	9.707	9.767	246.56	248.08	0.100	0.104	2.540	2.692	2.008	.911
MS9955-201	0.106	0.176	6.22	4.47	0.135	0.143	3.429	3.632	.115	.052
MS9955-202	0.229	0.239	5.82	6.07	0.135	0.143	3.429	3.632	.139	.063
MS9955-203	0.291	0.301	7.39	7.65	0.135	0.143	3.429	3.632	.161	.073
MS9955-204	0.394	0.364	8.90	9.25	0.135	0.143	3.429	3.632	.185	.084
MS9955-205	0.416	0.426	10.57	10.82	0.135	0.143	3.429	3.632	.208	.094
MS9955-206	0.479	0.489	12.17	12.42	0.135	0.143	3.429	3.632	.232	.105
MS9955-207	0.541	0.551	13.74	14.00	0.135	0.143	3.429	3.632	.255	.116
MS9955-208	0.604	0.614	15.34	15.60	0.135	0.143	3.429	3.632	.278	.126
MS9955-209	0.666	0.676	16.92	17.17	0.135	0.143	3.429	3.632	.301	.137
MS9955-210	0.728	0.740	18.49	18.80	0.135	0.143	3.429	3.632	.324	.147
MS9955-211	0.790	0.802	20.07	20.37	0.135	0.143	3.429	3.632	.348	.158
MS9955-212	0.853	0.865	21.67	21.97	0.135	0.143	3.429	3.632	.371	.168
MS9955-213	0.915	0.927	23.24	23.55	0.135	0.143	3.429	3.632	.394	.179
MS9955-214	0.978	0.990	24.84	25.15	0.135	0.143	3.429	3.632	.417	.189
MS9955-215	1.040	1.052	26.42	26.72	0.135	0.143	3.429	3.632	.441	.200
MS9955-216	1.103	1.115	28.02	28.32	0.135	0.143	3.429	3.632	.464	.210
MS9955-217	1.165	1.177	29.59	29.90	0.135	0.143	3.429	3.632	.487	.221
MS9955-218	1.228	1.240	31.19	31.50	0.135	0.143	3.429	3.632	.512	.232
MS9955-219	1.290	1.302	32.77	33.07	0.135	0.143	3.429	3.632	.534	.242
MS9955-220	1.353	1.365	34.37	34.67	0.135	0.143	3.429	3.632	.557	.253
MS9955-221	1.415	1.427	35.94	36.25	0.135	0.143	3.429	3.632	.580	.263
MS9955-222	1.478	1.490	37.54	37.85	0.135	0.143	3.429	3.632	.604	.274
MS9955-223	1.540	1.552	39.11	39.42	0.135	0.143	3.429	3.632	.628	.285
MS9955-224	1.603	1.615	40.61	40.92	0.135	0.143	3.429	3.632	.650	.295
MS9955-225	1.665	1.677	42.11	42.42	0.135	0.143	3.429	3.632	.673	.306
MS9955-226	1.728	1.740	43.61	43.92	0.135	0.143	3.429	3.632	.697	.316
MS9955-227	1.790	1.802	45.11	45.42	0.135	0.143	3.429	3.632	.720	.327
MS9955-228	1.853	1.865	46.61	46.92	0.135	0.143	3.429	3.632	.743	.337
MS9955-229	1.915	1.927	48.11	48.42	0.135	0.143	3.429	3.632	.767	.348
MS9955-230	1.978	1.990	49.61	49.92	0.135	0.143	3.429	3.632	.790	.358
MS9955-231	2.040	2.052	51.11	51.42	0.135	0.143	3.429	3.632	.814	.369
MS9955-232	2.103	2.115	52.61	52.92	0.135	0.143	3.429	3.632	.837	.379
MS9955-233	2.165	2.177	54.11	54.42	0.135	0.143	3.429	3.632	.860	.390
MS9955-234	2.228	2.240	55.61	55.92	0.135	0.143	3.429	3.632	.883	.400
MS9955-235	2.290	2.302	57.11	57.42	0.135	0.143	3.429	3.632	.906	.411
MS9955-236	2.353	2.365	58.61	58.92	0.135	0.143	3.429	3.632	.929	.421
MS9955-237	2.415	2.427	60.11	60.42	0.135	0.143	3.429	3.632	.952	.432
MS9955-238	2.478	2.490	61.61	61.92	0.135	0.143	3.429	3.632	.975	.442
MS9955-239	2.540	2.552	63.11	63.42	0.135	0.143	3.429	3.632	1.000	.453
MS9955-240	2.603	2.615	64.61	64.92	0.135	0.143	3.429	3.632	1.023	.464
MS9955-241	2.665	2.677	66.11	66.42	0.135	0.143	3.429	3.632	1.046	.475
MS9955-242	2.728	2.740	67.61	67.92	0.135	0.143	3.429	3.632	1.069	.485
MS9955-243	2.790	2.802	69.11	69.42	0.135	0.143	3.429	3.632	1.092	.496
MS9955-244	2.853	2.865	70.61	70.92	0.135	0.143	3.429	3.632	1.115	.506
MS9955-245	2.915	2.927	72.11	72.42	0.135	0.143	3.429	3.632	1.138	.517
MS9955-246	2.978	2.990	73.61	73.92	0.135	0.143	3.429	3.632	1.161	.527
MS9955-247	3.040	3.052	75.11	75.42	0.135	0.143	3.429	3.632	1.184	.538

P.A. Air Force-11 Other Code Navy-AS	INTERNATIONAL INTEREST ABCC 17/87	TITLE PACKING PREFORMED - AMS 3668 'O' RING	MILITARY STANDARD <b>MS9955</b>
PROVISIONAL SPECIFICATION NONE	SUPERSEDES	SHEET 3 OF 7	

 11/11/87  
 Navy - AS, OS  
 Air Force - 82

 This has been examined by the Dept of the Air Force (11) and the  
 Dept of the Navy (AS) and is hereby approved for use by  
 the Air Force and the Navy. All other military activities are required  
 to comply with this standard when applicable.

**MS9955**FED SUP CLASS  
5330

PART NUMBER	ID IN.		ID (mm)		T IN.		T (mm)		APPROX MASS	
	MIN	MAX	MIN	MAX	MIN	MAX	MIN	MAX	GB/100	kg/100
MS9955-236	3.219	3.249	81.76	82.52	0.135	0.143	3.429	3.632	1.254	569
MS9955-237	3.244	3.276	84.96	85.70	0.135	0.143	3.429	3.632	1.301	590
MS9955-238	3.449	3.499	88.11	88.87	0.135	0.143	3.429	3.632	1.347	611
MS9955-239	3.504	3.524	91.29	92.05	0.135	0.143	3.429	3.632	1.394	632
MS9955-240	3.719	3.749	94.46	95.22	0.135	0.143	3.429	3.632	1.440	653
MS9955-241	3.844	3.874	97.64	98.40	0.135	0.143	3.429	3.632	1.487	674
MS9955-242	3.904	3.904	100.01	101.57	0.135	0.143	3.429	3.632	1.533	695
MS9955-243	4.004	4.124	103.79	105.75	0.135	0.143	3.429	3.632	1.580	717
MS9955-244	4.219	4.249	107.16	107.92	0.135	0.143	3.429	3.632	1.626	738
MS9955-245	4.364	4.374	110.34	111.10	0.135	0.143	3.429	3.632	1.672	758
MS9955-246	4.469	4.499	113.51	114.27	0.135	0.143	3.429	3.632	1.719	780
MS9955-247	4.594	4.624	116.69	117.45	0.135	0.143	3.429	3.632	1.766	801
MS9955-248	4.719	4.749	119.86	120.62	0.135	0.143	3.429	3.632	1.812	822
MS9955-249	4.844	4.874	123.04	123.80	0.135	0.143	3.429	3.632	1.859	843
MS9955-250	4.969	4.999	126.21	126.97	0.135	0.143	3.429	3.632	1.905	864
MS9955-251	5.084	5.132	129.10	130.35	0.135	0.143	3.429	3.632	1.952	885
MS9955-252	5.211	5.257	132.36	133.53	0.135	0.143	3.429	3.632	2.000	907
MS9955-253	5.336	5.382	135.53	136.70	0.135	0.143	3.429	3.632	2.044	927
MS9955-254	5.461	5.507	138.71	139.00	0.135	0.143	3.429	3.632	2.091	948
MS9955-255	5.586	5.632	141.88	143.05	0.135	0.143	3.429	3.632	2.137	969
MS9955-256	5.711	5.757	145.06	146.23	0.135	0.143	3.429	3.632	2.184	991
MS9955-257	5.836	5.882	148.23	149.40	0.135	0.143	3.429	3.632	2.230	1.012
MS9955-258	5.961	6.007	151.41	152.58	0.135	0.143	3.429	3.632	2.277	1.033
MS9955-259	6.086	6.257	154.59	155.76	0.135	0.143	3.429	3.632	2.323	1.054
MS9955-260	6.211	6.307	157.76	158.93	0.135	0.143	3.429	3.632	2.370	1.075
MS9955-261	6.336	6.407	160.94	162.11	0.135	0.143	3.429	3.632	2.416	1.096
MS9955-262	6.461	6.507	164.11	165.28	0.135	0.143	3.429	3.632	2.462	1.117
MS9955-263	6.586	6.632	167.29	168.46	0.135	0.143	3.429	3.632	2.509	1.138
MS9955-264	6.711	6.757	170.46	171.63	0.135	0.143	3.429	3.632	2.555	1.159
MS9955-265	6.836	6.882	173.64	174.81	0.135	0.143	3.429	3.632	2.601	1.180
MS9955-266	6.961	7.007	176.81	177.98	0.135	0.143	3.429	3.632	2.647	1.201
MS9955-267	7.086	7.132	180.00	181.17	0.135	0.143	3.429	3.632	2.693	1.222
MS9955-268	7.211	7.257	183.17	184.34	0.135	0.143	3.429	3.632	2.739	1.243
MS9955-269	7.336	7.382	186.35	187.52	0.135	0.143	3.429	3.632	2.785	1.264
MS9955-270	7.461	7.507	189.52	190.69	0.135	0.143	3.429	3.632	2.831	1.285
MS9955-271	7.586	7.632	192.70	193.87	0.135	0.143	3.429	3.632	2.877	1.306
MS9955-272	7.711	7.757	195.87	197.04	0.135	0.143	3.429	3.632	2.923	1.327
MS9955-273	7.836	7.882	199.05	200.22	0.135	0.143	3.429	3.632	2.969	1.348
MS9955-274	7.961	8.007	202.22	203.39	0.135	0.143	3.429	3.632	3.015	1.369
MS9955-275	8.086	8.132	205.40	206.57	0.135	0.143	3.429	3.632	3.061	1.390
MS9955-276	8.211	8.257	208.57	209.74	0.135	0.143	3.429	3.632	3.107	1.411
MS9955-277	8.336	8.382	211.75	212.92	0.135	0.143	3.429	3.632	3.153	1.432
MS9955-278	8.461	8.507	214.92	216.09	0.135	0.143	3.429	3.632	3.199	1.453
MS9955-279	8.586	8.632	218.10	219.27	0.135	0.143	3.429	3.632	3.245	1.474
MS9955-280	8.711	8.757	221.27	222.44	0.135	0.143	3.429	3.632	3.291	1.495
MS9955-281	8.836	8.882	224.45	225.62	0.135	0.143	3.429	3.632	3.337	1.516
MS9955-282	8.961	9.007	227.62	228.79	0.135	0.143	3.429	3.632	3.383	1.537
MS9955-283	9.086	9.132	230.80	231.97	0.135	0.143	3.429	3.632	3.429	1.558
MS9955-284	9.211	9.257	233.97	235.14	0.135	0.143	3.429	3.632	3.475	1.579
MS9955-285	9.336	9.382	237.15	238.32	0.135	0.143	3.429	3.632	3.521	1.600
MS9955-286	9.461	9.507	240.32	241.49	0.135	0.143	3.429	3.632	3.567	1.621
MS9955-287	9.586	9.632	243.50	244.67	0.135	0.143	3.429	3.632	3.613	1.642
MS9955-288	9.711	9.757	246.67	247.84	0.135	0.143	3.429	3.632	3.659	1.663
MS9955-289	9.836	9.882	249.85	251.02	0.135	0.143	3.429	3.632	3.705	1.684
MS9955-290	9.961	10.007	253.02	254.19	0.135	0.143	3.429	3.632	3.751	1.705
MS9955-291	10.086	10.132	256.20	257.37	0.135	0.143	3.429	3.632	3.797	1.726
MS9955-292	10.211	10.257	259.37	260.54	0.135	0.143	3.429	3.632	3.843	1.747
MS9955-293	10.336	10.382	262.55	263.72	0.135	0.143	3.429	3.632	3.889	1.768
MS9955-294	10.461	10.507	265.72	266.89	0.135	0.143	3.429	3.632	3.935	1.789
MS9955-295	10.586	10.632	268.90	270.07	0.135	0.143	3.429	3.632	3.981	1.810
MS9955-296	10.711	10.757	272.07	273.24	0.135	0.143	3.429	3.632	4.027	1.831
MS9955-297	10.836	10.882	275.25	276.42	0.135	0.143	3.429	3.632	4.073	1.852
MS9955-298	10.961	11.007	278.42	279.59	0.135	0.143	3.429	3.632	4.119	1.873
MS9955-299	11.086	11.132	281.60	282.77	0.135	0.143	3.429	3.632	4.165	1.894
MS9955-300	11.211	11.257	284.77	285.94	0.135	0.143	3.429	3.632	4.211	1.915
MS9955-301	11.336	11.382	287.95	289.12	0.135	0.143	3.429	3.632	4.257	1.936
MS9955-302	11.461	11.507	291.12	292.29	0.135	0.143	3.429	3.632	4.303	1.957
MS9955-303	11.586	11.632	294.30	295.47	0.135	0.143	3.429	3.632	4.349	1.978
MS9955-304	11.711	11.757	297.47	298.64	0.135	0.143	3.429	3.632	4.395	1.999
MS9955-305	11.836	11.882	300.65	301.82	0.135	0.143	3.429	3.632	4.441	2.020
MS9955-306	11.961	12.007	303.82	304.99	0.135	0.143	3.429	3.632	4.487	2.041
MS9955-307	12.086	12.132	307.00	308.17	0.135	0.143	3.429	3.632	4.533	2.062
MS9955-308	12.211	12.257	310.17	311.34	0.135	0.143	3.429	3.632	4.579	2.083
MS9955-309	12.336	12.382	313.35	314.52	0.135	0.143	3.429	3.632	4.625	2.104
MS9955-310	12.461	12.507	316.52	317.69	0.135	0.143	3.429	3.632	4.671	2.125
MS9955-311	12.586	12.632	319.70	320.87	0.135	0.143	3.429	3.632	4.717	2.146
MS9955-312	12.711	12.757	322.87	324.04	0.135	0.143	3.429	3.632	4.763	2.167
MS9955-313	12.836	12.882	326.05	327.22	0.135	0.143	3.429	3.632	4.809	2.188

U.S. Air Force - II Ordnance Navy - AS	INTERNATIONAL INTEREST ABCC 17/87	TITLE PACKING PREFORMED - AMS 3668 'O' RING	MILITARY STANDARD <b>MS9955</b>
PRELIMINARY SPECIFICATION NONE		SUPPLEMENTS	SHEET 4 OF 7

DD FORM 672-1 (Hand and computer use)

EDITION OF 1 SEP 67 MAY BE USED

APPROVED 22 Dec 71 REVISED

This standard has been approved by the Dept. of the Air Force (III) and the Department of the Navy (AS) and is mandatory for use by all military and civilian agencies under their respective authority. All other military agencies are required to conform to this standard where applicable.

Review activities  
Navy - AS, OS  
Air Force - AS

**MS9955**PES SUP CLASS  
5-30

PART NUMBER	ID IN.		ID (mm)		T IN.		T (mm)		APPROX MASS	
	MIN	MAX	MIN	MAX	MIN	MAX	MIN	MAX	LB/100	KG/100
MS9955-314	0.714	0.731	18.26	18.57	0.205	0.215	5.21	5.46	.793	.362
MS9955-315	0.701	0.703	17.84	20.14	0.205	0.215	5.21	5.46	.846	.334
MS9955-316	0.864	0.894	21.44	21.74	0.205	0.215	5.21	5.46	.893	.409
MS9955-317	0.900	0.918	23.01	23.37	0.205	0.215	5.21	5.46	.952	.432
MS9955-319	0.964	0.961	24.61	24.92	0.205	0.215	5.21	5.46	1.005	.456
MS9955-320	1.001	1.003	25.77	26.44	0.205	0.215	5.21	5.46	1.058	.482
MS9955-321	1.304	1.104	27.79	28.09	0.205	0.215	5.21	5.46	1.112	.504
MS9955-322	1.144	1.168	29.36	29.67	0.205	0.215	5.21	5.46	1.165	.523
MS9955-323	1.214	1.231	30.84	31.27	0.205	0.215	5.21	5.46	1.218	.552
MS9955-324	1.261	1.293	32.34	32.84	0.205	0.215	5.21	5.46	1.271	.577
MS9955-325	1.344	1.356	34.14	34.44	0.205	0.215	5.21	5.46	1.324	.601
MS9955-326	1.405	1.485	37.21	37.72	0.205	0.215	5.21	5.46	1.430	.649
MS9955-327	1.990	1.610	48.39	48.89	0.205	0.215	5.21	5.46	1.537	.697
MS9955-328	1.715	1.735	43.36	44.07	0.205	0.215	5.21	5.46	1.643	.745
MS9955-329	1.840	1.860	46.74	47.24	0.205	0.215	5.21	5.46	1.749	.793
MS9955-330	1.945	1.985	49.91	50.42	0.205	0.215	5.21	5.46	1.855	.841
MS9955-331	2.090	2.110	53.09	53.59	0.205	0.215	5.21	5.46	1.961	.899
MS9955-332	2.215	2.235	56.26	56.77	0.205	0.215	5.21	5.46	2.067	.938
MS9955-333	2.340	2.360	59.44	59.94	0.205	0.215	5.21	5.46	2.173	.986
MS9955-334	2.465	2.485	62.61	63.12	0.205	0.215	5.21	5.46	2.279	1.034
MS9955-335	2.590	2.610	65.79	66.29	0.205	0.215	5.21	5.46	2.385	1.082
MS9955-336	2.710	2.740	68.87	69.40	0.205	0.215	5.21	5.46	2.491	1.130
MS9955-337	2.835	2.865	72.01	72.77	0.205	0.215	5.21	5.46	2.597	1.178
MS9955-338	2.960	2.990	75.18	75.95	0.205	0.215	5.21	5.46	2.703	1.226
MS9955-339	3.085	3.115	78.36	79.12	0.205	0.215	5.21	5.46	2.810	1.275
MS9955-340	3.210	3.240	81.53	82.30	0.205	0.215	5.21	5.46	2.916	1.323
MS9955-341	3.335	3.365	84.71	85.47	0.205	0.215	5.21	5.46	3.022	1.371
MS9955-342	3.460	3.490	87.88	88.65	0.205	0.215	5.21	5.46	3.128	1.419
MS9955-343	3.585	3.615	91.06	91.82	0.205	0.215	5.21	5.46	3.234	1.467
MS9955-344	3.710	3.740	94.23	95.00	0.205	0.215	5.21	5.46	3.340	1.515
MS9955-345	3.835	3.865	97.41	98.17	0.205	0.215	5.21	5.46	3.446	1.563
MS9955-346	3.960	3.990	100.58	101.35	0.205	0.215	5.21	5.46	3.552	1.611
MS9955-347	4.085	4.115	103.76	104.52	0.205	0.215	5.21	5.46	3.658	1.659
MS9955-348	4.210	4.240	106.93	107.70	0.205	0.215	5.21	5.46	3.764	1.707
MS9955-349	4.335	4.365	110.11	110.87	0.205	0.215	5.21	5.46	3.870	1.755
MS9955-350	4.460	4.490	113.28	114.05	0.205	0.215	5.21	5.46	3.976	1.803
MS9955-351	4.585	4.615	116.46	117.22	0.205	0.215	5.21	5.46	4.090	1.855
MS9955-352	4.710	4.740	119.63	120.40	0.205	0.215	5.21	5.46	4.196	1.903
MS9955-353	4.835	4.865	122.81	123.57	0.205	0.215	5.21	5.46	4.302	1.951
MS9955-354	4.960	4.990	125.98	126.75	0.205	0.215	5.21	5.46	4.408	2.000
MS9955-355	5.085	5.123	129.16	130.12	0.205	0.215	5.21	5.46	4.515	2.048
MS9955-356	5.202	5.244	132.33	133.30	0.205	0.215	5.21	5.46	4.621	2.096
MS9955-357	5.327	5.373	135.51	136.47	0.205	0.215	5.21	5.46	4.727	2.144
MS9955-358	5.452	5.498	138.68	139.66	0.205	0.215	5.21	5.46	4.834	2.193
MS9955-359	5.577	5.623	141.86	142.82	0.205	0.215	5.21	5.46	4.940	2.241
MS9955-360	5.702	5.748	145.03	146.00	0.205	0.215	5.21	5.46	5.046	2.289
MS9955-361	5.827	5.873	148.21	149.17	0.205	0.215	5.21	5.46	5.152	2.337
MS9955-362	5.952	5.998	151.38	152.35	0.205	0.215	5.21	5.46	5.259	2.385
MS9955-363	6.077	6.123	154.56	155.53	0.205	0.215	5.21	5.46	5.365	2.432
MS9955-364	6.202	6.248	157.73	158.70	0.205	0.215	5.21	5.46	5.471	2.480
MS9955-365	6.327	6.373	160.91	161.88	0.205	0.215	5.21	5.46	5.578	2.528
MS9955-366	6.452	6.498	164.08	165.05	0.205	0.215	5.21	5.46	5.684	2.576
MS9955-367	6.577	6.623	167.26	168.23	0.205	0.215	5.21	5.46	5.790	2.624
MS9955-368	6.702	6.748	170.43	171.40	0.205	0.215	5.21	5.46	5.896	2.672
MS9955-369	6.827	6.873	173.61	174.58	0.205	0.215	5.21	5.46	6.002	2.720
MS9955-370	6.952	6.998	176.78	177.75	0.205	0.215	5.21	5.46	6.108	2.768
MS9955-371	7.077	7.123	180.00	180.97	0.205	0.215	5.21	5.46	6.214	2.816
MS9955-372	7.202	7.248	183.17	184.14	0.205	0.215	5.21	5.46	6.320	2.864
MS9955-373	7.327	7.373	186.35	187.32	0.205	0.215	5.21	5.46	6.426	2.912
MS9955-374	7.452	7.498	189.52	190.49	0.205	0.215	5.21	5.46	6.532	2.960
MS9955-375	7.577	7.623	192.70	193.67	0.205	0.215	5.21	5.46	6.638	3.008
MS9955-376	7.702	7.748	195.87	196.84	0.205	0.215	5.21	5.46	6.744	3.056

Approved by the Dept. of the Air Force (1) and the of the Navy (2) and is hereby authorized for use by all other military activities as required by the standard shown herein.	Air Force - II Other Cast Navy - AS	INTERNATIONAL INTEREST ABCC 17/27	TITLE PACKING, PREFORMED - AMS 3668 'O' RING	MILITARY STANDARD <b>MS9955</b>
PROCUREMENT SPECIFICATION NONE	SUPERSEDES	SHEET 5 OF 7		



MS9955

FED. SUP CLASS  
5330

PART NUMBER	LD IN.		ID (mm)		T IN.		T (mm)		APPROX MASS	
	MIN	MAX	MIN	MAX	MIN	MAX	MIN	MAX	LB/100	KG/100
MS9955-369	7.945	8.005	201.00	203.33	0.205	0.215	5.21	5.44	6.959	1.157
MS9955-370	8.105	8.255	200.25	200.00	0.205	0.215	5.21	5.44	7.171	1.253
MS9955-371	8.445	8.505	214.50	216.08	0.205	0.215	5.21	5.44	7.384	1.343
MS9955-372	8.605	8.755	220.85	222.38	0.205	0.215	5.21	5.44	7.516	1.446
MS9955-373	8.945	9.205	227.30	228.79	0.205	0.215	5.21	5.44	7.609	1.542
MS9955-374	8.145	8.295	239.79	239.08	0.205	0.215	5.21	5.44	8.022	1.638
MS9955-375	8.445	9.105	238.80	244.40	0.205	0.215	5.21	5.44	9.234	1.735
MS9955-376	8.645	8.755	244.25	247.78	0.205	0.215	5.21	5.44	8.447	1.331
MS9955-377	9.945	10.005	252.60	254.13	0.205	0.215	5.21	5.44	8.660	1.328
MS9955-378	10.445	10.505	265.30	266.83	0.205	0.215	5.21	5.44	9.085	1.421
MS9955-379	10.745	11.005	270.00	270.53	0.205	0.215	5.21	5.44	9.510	1.514
MS9955-380	11.045	11.505	280.70	282.23	0.205	0.215	5.21	5.44	9.735	1.506
MS9955-381	11.045	12.005	303.40	304.93	0.205	0.215	5.21	5.44	10.160	1.693
MS9955-382	12.945	13.005	328.80	330.33	0.205	0.215	5.21	5.44	11.210	1.855
MS9955-383	13.945	14.005	354.20	355.73	0.205	0.215	5.21	5.44	12.060	1.976
MS9955-384	14.945	15.005	379.60	381.13	0.205	0.215	5.21	5.44	12.911	1.856
MS9955-385	15.910	16.000	404.11	406.40	0.205	0.215	5.21	5.44	13.744	1.624
MS9955-386	16.910	17.000	429.51	431.80	0.205	0.215	5.21	5.44	14.594	1.620
MS9955-387	17.910	18.000	454.91	457.20	0.205	0.215	5.21	5.44	15.444	1.705
MS9955-388	18.910	19.100	480.31	482.60	0.205	0.215	5.21	5.44	16.294	1.791
MS9955-389	19.910	20.000	505.71	508.00	0.205	0.215	5.21	5.44	17.144	1.776
MS9955-390	20.910	21.000	531.11	533.40	0.205	0.215	5.21	5.44	17.994	1.662
MS9955-391	21.910	22.000	556.51	558.80	0.205	0.215	5.21	5.44	18.844	1.548
MS9955-392	22.910	23.000	581.91	584.20	0.205	0.215	5.21	5.44	19.694	1.328
MS9955-393	23.910	24.000	607.31	609.60	0.205	0.215	5.21	5.44	20.544	1.314
MS9955-394	24.910	25.000	632.71	635.00	0.205	0.215	5.21	5.44	21.394	1.644
MS9955-395	25.910	26.000	657.11	660.40	0.205	0.215	5.21	5.44	22.244	1.335
MS9955-425	4.465	4.490	113.28	114.09	0.269	0.281	6.83	7.14	6.313	1.136
MS9955-426	4.585	4.615	116.46	117.22	0.269	0.281	6.83	7.14	7.136	1.419
MS9955-427	4.710	4.740	119.63	120.45	0.269	0.281	6.83	7.14	7.277	1.30
MS9955-428	4.835	4.865	122.81	123.57	0.269	0.281	6.83	7.14	7.418	1.183
MS9955-429	4.960	4.990	125.98	126.75	0.269	0.281	6.83	7.14	7.559	1.466
MS9955-430	5.077	5.123	128.96	130.12	0.269	0.281	6.83	7.14	7.923	1.548
MS9955-431	5.202	5.248	132.13	133.30	0.269	0.281	6.83	7.14	8.005	1.631
MS9955-432	5.327	5.373	135.31	136.47	0.269	0.281	6.83	7.14	8.187	1.714
MS9955-433	5.452	5.498	138.48	139.65	0.269	0.281	6.83	7.14	8.369	1.796
MS9955-434	5.577	5.623	141.66	142.82	0.269	0.281	6.83	7.14	8.550	1.878
MS9955-435	5.702	5.748	144.83	146.00	0.269	0.281	6.83	7.14	8.731	1.961
MS9955-436	5.827	5.873	148.01	149.17	0.269	0.281	6.83	7.14	8.915	1.044
MS9955-437	5.952	5.998	151.18	152.35	0.269	0.281	6.83	7.14	9.096	1.126
MS9955-438	6.077	6.123	154.36	155.52	0.269	0.281	6.83	7.14	9.278	1.209
MS9955-439	6.202	6.248	157.53	158.70	0.269	0.281	6.83	7.14	9.461	1.291
MS9955-440	6.327	6.373	160.71	161.87	0.269	0.281	6.83	7.14	9.644	1.374
MS9955-441	6.452	6.498	163.88	165.05	0.269	0.281	6.83	7.14	9.826	1.456
MS9955-442	6.577	6.623	167.06	168.22	0.269	0.281	6.83	7.14	10.009	1.538
MS9955-443	6.702	6.748	170.23	171.40	0.269	0.281	6.83	7.14	10.188	1.621
MS9955-444	6.827	6.873	173.41	174.57	0.269	0.281	6.83	7.14	10.371	1.704
MS9955-445	6.952	6.998	176.58	177.75	0.269	0.281	6.83	7.14	10.554	1.786
MS9955-446	7.077	7.123	179.76	180.92	0.269	0.281	6.83	7.14	10.737	1.869
MS9955-447	7.202	7.248	182.93	184.10	0.269	0.281	6.83	7.14	10.920	1.951
MS9955-448	7.327	7.373	186.11	187.27	0.269	0.281	6.83	7.14	11.103	2.034
MS9955-449	7.452	7.498	189.28	190.45	0.269	0.281	6.83	7.14	11.286	2.116
MS9955-450	7.577	7.623	192.46	193.62	0.269	0.281	6.83	7.14	11.469	2.199
MS9955-451	7.702	7.748	195.63	196.80	0.269	0.281	6.83	7.14	11.652	2.281
MS9955-452	7.827	7.873	198.81	200.00	0.269	0.281	6.83	7.14	11.835	2.364
MS9955-453	7.952	8.000	201.98	203.15	0.269	0.281	6.83	7.14	12.018	2.446
MS9955-454	8.077	8.123	205.16	206.32	0.269	0.281	6.83	7.14	12.201	2.529
MS9955-455	8.202	8.248	208.33	209.50	0.269	0.281	6.83	7.14	12.384	2.611
MS9955-456	8.327	8.373	211.51	212.67	0.269	0.281	6.83	7.14	12.567	2.694
MS9955-457	8.452	8.498	214.68	215.85	0.269	0.281	6.83	7.14	12.750	2.776
MS9955-458	8.577	8.623	217.86	219.02	0.269	0.281	6.83	7.14	12.933	2.859
MS9955-459	8.702	8.748	221.03	222.20	0.269	0.281	6.83	7.14	13.116	2.941
MS9955-460	8.827	8.873	224.21	225.37	0.269	0.281	6.83	7.14	13.299	3.024
MS9955-461	8.952	9.000	227.38	228.55	0.269	0.281	6.83	7.14	13.482	3.106
MS9955-462	9.077	9.123	230.56	231.72	0.269	0.281	6.83	7.14	13.665	3.189
MS9955-463	9.202	9.248	233.73	234.90	0.269	0.281	6.83	7.14	13.848	3.271
MS9955-464	9.327	9.373	236.91	238.07	0.269	0.281	6.83	7.14	14.031	3.354
MS9955-465	9.452	9.498	240.08	241.25	0.269	0.281	6.83	7.14	14.214	3.436
MS9955-466	9.577	9.623	243.26	244.42	0.269	0.281	6.83	7.14	14.397	3.519
MS9955-467	9.702	9.748	246.43	247.60	0.269	0.281	6.83	7.14	14.580	3.601
MS9955-468	9.827	9.873	249.61	250.77	0.269	0.281	6.83	7.14	14.763	3.684
MS9955-469	9.952	10.000	252.78	253.95	0.269	0.281	6.83	7.14	14.946	3.766
MS9955-470	10.077	10.123	255.96	257.12	0.269	0.281	6.83	7.14	15.129	3.849
MS9955-471	10.202	10.248	259.13	260.30	0.269	0.281	6.83	7.14	15.312	3.931
MS9955-472	10.327	10.373	262.31	263.47	0.269	0.281	6.83	7.14	15.495	4.014
MS9955-473	10.452	10.498	265.48	266.65	0.269	0.281	6.83	7.14	15.678	4.096
MS9955-474	10.577	10.623	268.66	269.82	0.269	0.281	6.83	7.14	15.861	4.179
MS9955-475	10.702	10.748	271.83	273.00	0.269	0.281	6.83	7.14	16.044	4.261
MS9955-476	10.827	10.873	275.01	276.17	0.269	0.281	6.83	7.14	16.227	4.344
MS9955-477	10.952	11.000	278.18	279.35	0.269	0.281	6.83	7.14	16.410	4.426
MS9955-478	11.077	11.123	281.36	282.52	0.269	0.281	6.83	7.14	16.593	4.509
MS9955-479	11.202	11.248	284.53	285.70	0.269	0.281	6.83	7.14	16.776	4.591
MS9955-480	11.327	11.373	287.71	288.87	0.269	0.281	6.83	7.14	16.959	4.674
MS9955-481	11.452	11.498	290.88	292.05	0.269	0.281	6.83	7.14	17.142	4.756
MS9955-482	11.577	11.623	294.06	295.22	0.269	0.281	6.83	7.14	17.325	4.839
MS9955-483	11.702	11.748	297.23	298.40	0.269	0.281	6.83	7.14	17.508	4.921
MS9955-484	11.827	11.873	300.41	301.57	0.269	0.281	6.83	7.14	17.691	5.004
MS9955-485	11.952	12.000	303.58	304.75	0.269	0.281	6.83	7.14	17.874	5.086
MS9955-486	12.077	12.123	306.76	307.92	0.269	0.281	6.83	7.14	18.057	5.169
MS9955-487	12.202	12.248	309.93	311.10	0.269	0.281	6.83	7.14	18.240	5.251
MS9955-488	12.327	12.373	313.11	314.27	0.269	0.281	6.83	7.14	18.423	5.334
MS9955-489	12.452	12.498	316.28	317.45	0.269	0.281	6.83	7.14	18.606	5.416
MS9955-490	12.577	12.623	319.46	320.62	0.269	0.281	6.83	7.14	18.789	5.499
MS9955-491	12.702	12.748	322.63	323.80	0.269	0.281	6.83	7.14	18.972	5.581
MS9955-492	12.827	12.873	325.81	326.97	0.269	0.281	6.83	7.14	19.155	5.664
MS9955-493	12.952	13.000	328.98	330.15	0.269	0.281	6.83	7.14	19.338	5.746
MS9955-494	13.077	13.123	332.16	333.32	0.269	0.281	6.83	7.14	19.521	5.829
MS9955-495	13.202	13.248	335.33	336.50	0.269	0.281	6.83	7.14	19.704	5.911
MS9955-496	13.327	13.373	338.51	339.67	0.269	0.281	6.83	7.14	19.887	6.004
MS9955-497	13.452	13.498	341.68	342.						

**MS9955**PDS SUP CLASS  
6330

PART NUMBER	ID IN.		ID (mm)		T IN.		T (mm)		APPROX MASS	
	MIN	MAX	MIN	MAX	MIN	MAX	MIN	MAX	LB/100	Kg/100
MS9955-449	9.948	10.000	252.60	254.13	0.269	0.281	6.83	7.14	14.918	6.767
MS9955-450	10.448	10.500	268.30	269.83	0.269	0.281	6.83	7.14	15.646	7.097
MS9955-451	10.948	11.000	278.00	279.53	0.269	0.281	6.83	7.14	16.374	7.427
MS9955-452	11.448	11.500	290.70	292.23	0.269	0.281	6.83	7.14	17.102	7.757
MS9955-453	11.948	12.000	303.40	304.93	0.269	0.281	6.83	7.14	17.829	8.087
MS9955-454	12.448	12.500	316.10	317.63	0.269	0.281	6.83	7.14	18.557	8.417
MS9955-455	12.948	13.000	328.80	330.33	0.269	0.281	6.83	7.14	19.285	8.748
MS9955-456	13.448	13.500	341.50	343.03	0.269	0.281	6.83	7.14	20.012	9.077
MS9955-457	13.948	14.000	354.20	355.73	0.269	0.281	6.83	7.14	20.740	9.407
MS9955-458	14.448	14.500	366.90	368.43	0.269	0.281	6.83	7.14	21.468	9.738
MS9955-459	14.948	15.000	379.60	381.13	0.269	0.281	6.83	7.14	22.196	10.068
MS9955-460	15.448	15.500	392.30	393.83	0.269	0.281	6.83	7.14	22.923	10.398
MS9955-461	15.910	16.000	404.11	406.40	0.269	0.281	6.83	7.14	23.673	10.738
MS9955-462	16.410	16.500	416.01	419.10	0.269	0.281	6.83	7.14	24.402	11.069
MS9955-463	16.910	17.000	427.91	431.00	0.269	0.281	6.83	7.14	25.132	11.400
MS9955-464	17.410	17.500	439.81	444.50	0.269	0.281	6.83	7.14	25.861	11.730
MS9955-465	17.910	18.000	451.71	457.20	0.269	0.281	6.83	7.14	26.590	12.061
MS9955-466	18.410	18.500	463.61	469.90	0.269	0.281	6.83	7.14	27.320	12.392
MS9955-467	18.910	19.000	475.51	482.60	0.269	0.281	6.83	7.14	28.049	12.723
MS9955-468	19.410	19.500	487.41	495.30	0.269	0.281	6.83	7.14	28.778	13.053
MS9955-469	19.910	20.000	499.31	508.00	0.269	0.281	6.83	7.14	29.507	13.384
MS9955-470	20.410	21.000	511.21	521.40	0.269	0.281	6.83	7.14	30.236	13.714
MS9955-471	21.910	22.000	536.51	548.80	0.269	0.281	6.83	7.14	32.425	14.708
MS9955-472	22.410	23.000	548.41	562.2	0.269	0.281	6.83	7.14	33.154	15.039
MS9955-473	22.910	24.000	560.31	576.6	0.269	0.281	6.83	7.14	33.883	15.369
MS9955-474	23.410	25.000	572.21	589.0	0.269	0.281	6.83	7.14	34.612	15.700
MS9955-475	23.910	26.000	584.11	603.4	0.269	0.281	6.83	7.14	35.341	16.030

1. MATERIAL: POLYTETRAFLUOROETHYLENE AMS 3668
2. DIMENSIONS IN INCHES. METRIC CONVERSIONS ARE IN PARENTHESES. INTERNATIONAL SYSTEM UNITS (SI) SHOWN ARE FOR REFERENCE ONLY
3. IDENTIFICATION AND PACKAGING PER AMS 2817. PACKING SHALL NOT BE COILED OR LOOPED
4. DIMENSIONAL INSPECTION PER AS871.
5. DO NOT USE UNASSIGNED PART NUMBERS.

AS AND AMS ARE SOCIETY OF AUTOMOTIVE ENGINEERS, INC. PUBLICATIONS.  
THIS STANDARD WAS DEVELOPED COOPERATIVELY WITH THE MILITARY SERVICES BY THE SAE AEROSPACE PART STANDARDS DIVISION.

SAE Air Force - H Other Civil Naval - AS	INTERNATIONAL INTEREST ASQC 17/27	TITLE  PACKING, PREFORMED - AMS 3668, 'O' RING	MILITARY STANDARD  <b>MS9955</b>
PROPOSED SPECIFICATION NONE	SUPPLEMENT NONE	SHEET 7 OF 1	

DD FORM 672-1 (5-62) (Rev. 1-64)

REVISION OF 1-64 BY 1-64

APPROVED 22 Dec 71 REVISED

Rev. 1-64  
Air Force - H  
Other Civil  
Naval - AS

This standard is approved by the Dept. of the Air Force (H) and the Navy (AS) and is published in the SAE AEROSPACE PART STANDARDS DIVISION. It is the property of the SAE and is loaned to the user by the SAE. It and its contents are not to be reproduced in any form without the written permission of the SAE. The SAE is not responsible for the use of this standard in any other manner.