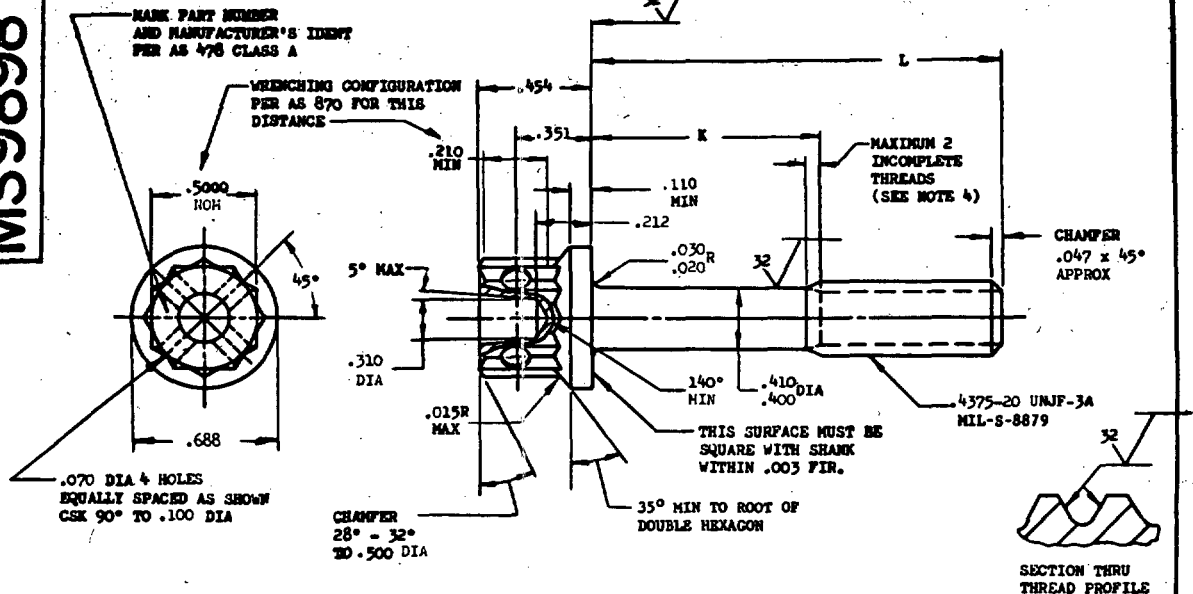


7355 7

MS9898**FED. SUP CLASS**
5306

PART NO.	L	K	APPROX WEIGHT LB/100
MS9898-04	.688	.105-.125	5.54
MS9898-05	.750	.105-.125	5.76
MS9898-06	.812	.105-.125	5.99
MS9898-07	.875	.105-.125	6.22
MS9898-08	.938	.105-.125	6.45
MS9898-09	1.000	.105-.125	6.68
MS9898-10	1.062	.105-.125	6.91
MS9898-11	1.125	.105-.125	7.14
MS9898-12	1.188	.105-.125	7.37
MS9898-13	1.250	.105-.125	7.60
MS9898-14	1.312	.128-.188	7.83
MS9898-15	1.375	.190-.250	8.06
MS9898-16	1.438	.252-.312	8.29
MS9898-17	1.500	.315-.375	8.52
MS9898-18	1.562	.378-.438	8.75
MS9898-19	1.625	.440-.500	8.98
MS9898-20	1.688	.502-.562	9.21
MS9898-21	1.750	.565-.625	9.44
MS9898-22	1.812	.627-.687	9.67
MS9898-23	1.875	.690-.750	9.90

PART NO.	L	K	APPROX WEIGHT LB/100
MS9898-24	1.938	.752-.812	10.13
MS9898-25	2.000	.815-.875	10.36
MS9898-26	2.125	.940-1.000	10.82
MS9898-27	2.250	1.065-1.125	11.28
MS9898-28	2.375	1.190-1.250	11.74
MS9898-29	2.500	1.315-1.375	12.20
MS9898-30	2.625	1.440-1.500	12.66
MS9898-31	2.750	1.565-1.625	13.12
MS9898-32	2.875	1.690-1.750	13.58
MS9898-33	3.000	1.815-1.875	14.04
MS9898-34	3.125	1.940-2.000	14.50
MS9898-35	3.250	2.065-2.125	14.96
MS9898-36	3.375	2.190-2.250	15.42
MS9898-37	3.500	2.315-2.375	15.88
MS9898-38	3.625	2.440-2.500	16.34
MS9898-39	3.750	2.565-2.625	16.80
MS9898-40	3.875	2.690-2.750	17.26
MS9898-41	4.000	2.815-2.875	17.72
MS9898-42	4.125	2.940-3.000	18.18
MS9898-43	4.250	3.065-3.125	18.64

PART NO.	L	K	APPROX WEIGHT LB/100
MS9898-44	4.375	3.190-3.250	19.10
MS9898-45	4.500	3.315-3.375	19.56
MS9898-46	4.625	3.440-3.500	20.02
MS9898-47	4.750	3.565-3.625	20.47
MS9898-48	4.875	3.690-3.750	20.94
MS9898-49	5.000	3.815-3.875	21.39
MS9898-50	5.125	3.940-4.000	21.85
MS9898-51	5.250	4.065-4.125	22.30
MS9898-52	5.375	4.190-4.250	22.75
MS9898-53	5.500	4.315-4.375	23.19
MS9898-54	5.625	4.440-4.500	23.63
MS9898-55	5.750	4.565-4.625	24.08
MS9898-56	5.875	4.690-4.750	24.52
MS9898-57	6.000	4.815-4.875	24.97

- SHANK SHALL BE STRAIGHT WITHIN .0025 PER INCH OF BOLT LENGTH.
- THE CONCENTRICITY OF THREAD PD IN RELATION TO THE SHANK SHALL BE WITHIN .006 FIR.
- THE CONCENTRICITY OF THE SHANK IN RELATION TO THE WASHER FACE DIAMETER AND DOUBLE HEXAGON OD SHALL BE WITHIN .010 FIR.
- INCOMPLETE THREADS NOT TO ENTER FILLET.
- MATERIAL: CORROSION RESISTANT STEEL AMS 5616.
- MANUFACTURING SPECIFICATION: AMS 7470. EXCEPT HEAD SHALL BE UPSET.
- HEAD TO SHANK FILLET SHALL BE COLD ROLLED AFTER HEAT TREATMENT TO REMOVE ALL VISUAL EVIDENCE OF GRINDING OR TOOL MARKS.
- HARDNESS: ROCKWELL C32-38.
- SURFACE TEXTURE: USAS B46.1-1962. UNLESS OTHERWISE SPECIFIED, SURFACES TO BE 125 MICROINCHES EXCEPT UPSET HEAD.
- MAGNETIC PARTICLE INSPECTION PER AMS 2640.
- BREAK SHARP EDGES .003-.015 UNLESS OTHERWISE SPECIFIED.
- DIMENSIONS IN INCHES. UNLESS OTHERWISE SPECIFIED, TOLERANCES: LINEAR DIMENSIONS $\pm .010$, ANGULAR DIMENSIONS $\pm 5^\circ$.
- DO NOT USE UNASSIGNED PART NUMBERS.

AS & AMS ARE SOCIETY OF AUTOMOTIVE ENGINEERS, INC. PUBLICATIONS.

THIS STANDARD WAS DEVELOPED COOPERATIVELY WITH THE MILITARY SERVICES BY THE SAE AEROSPACE PROPULSION DIVISION.

P.A. USAP - 11	TITLE	MILITARY STANDARD
Other Cost	BOLT, MACHINE - DOUBLE HEXAGON EXTENDED WASHER HEAD, DRILLED, AMS 5616, .4375-20 UNJF-3A	MS9898
Navy - AS		
PROCUREMENT SPECIFICATION	SUPERSEDES:	SHEET 1 OF 1

DD FORM 672-1 (Limited coordination)
ASG use only

PREVIOUS EDITIONS OF THIS FORM ARE OBSOLETE.

5306 - P032

APPROVED 21 Apr 69 REVISED

Review activities:

USAF - B2, B5

This military standard is approved by the Department of the Air Force and the Naval Air Systems Command and is mandatory for use by these activities. All other military activities are required to employ this standard where suitable.