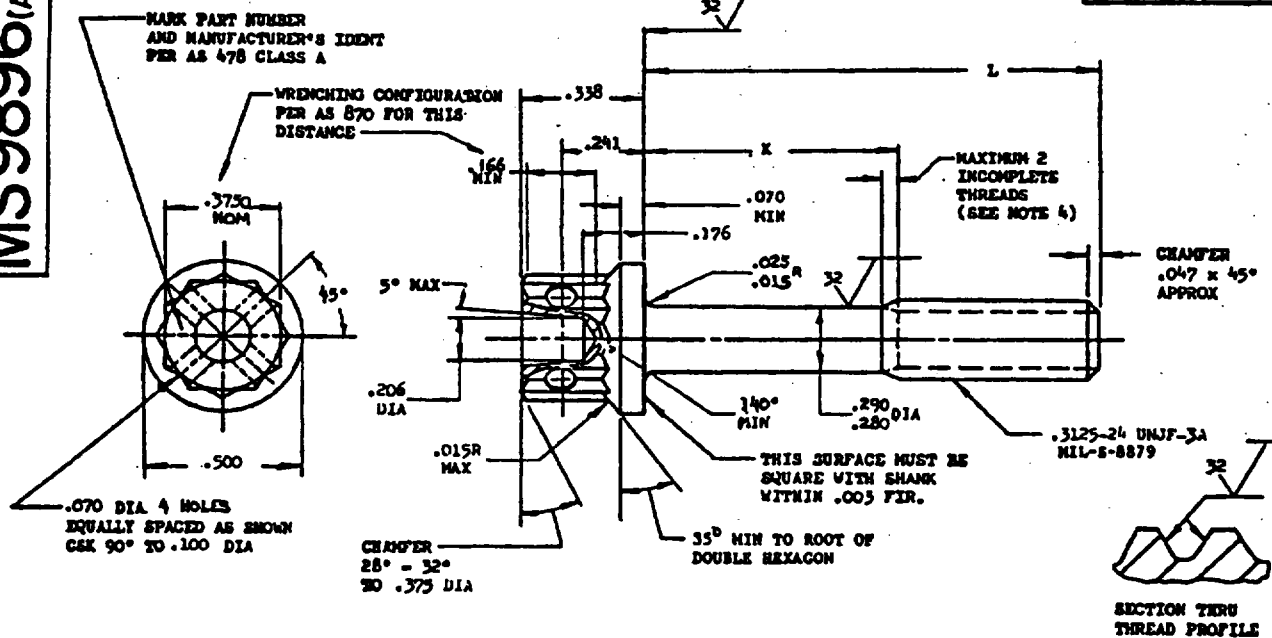


**MS9896(ASG)**FED. SUP CLASS  
5306

PART NO.	L	K	APPROX WEIGHT LB/100	PART NO.	L	K	APPROX WEIGHT LB/100	PART NO.	L	K	APPROX WEIGHT LB/100
MS9896-04	.500	.088-.108	2.17	MS9896-24	1.750	.815-.875	4.46	MS9896-44	4.000	3.065-3.125	8.58
MS9896-05	.562	.088-.108	2.28	MS9896-25	1.812	.878-.938	4.57	MS9896-45	4.125	3.190-3.250	8.81
MS9896-06	.625	.088-.108	2.40	MS9896-26	1.875	.940-1.000	4.69	MS9896-46	4.250	3.315-3.375	9.04
MS9896-07	.688	.088-.108	2.51	MS9896-27	1.938	1.002-1.062	4.80	MS9896-47	4.375	3.440-3.500	9.27
MS9896-08	.750	.088-.108	2.63	MS9896-28	2.000	1.065-1.125	4.92	MS9896-48	4.500	3.565-3.625	9.50
MS9896-09	.812	.088-.108	2.74	MS9896-29	2.125	1.190-1.250	5.15	MS9896-49	4.625	3.690-3.750	9.73
MS9896-10	.875	.088-.108	2.86	MS9896-30	2.250	1.315-1.375	5.38	MS9896-50	4.750	3.815-3.875	9.96
MS9896-11	.938	.088-.108	2.97	MS9896-31	2.375	1.440-1.500	5.61	MS9896-51	4.875	3.940-4.000	10.18
MS9896-12	1.000	.088-.125	3.09	MS9896-32	2.500	1.565-1.625	5.83	MS9896-52	5.000	4.065-4.125	10.41
MS9896-13	1.062	.128-.188	3.20	MS9896-33	2.625	1.690-1.750	6.06	MS9896-53	5.125	4.190-4.250	10.64
MS9896-14	1.125	.190-.250	3.32	MS9896-34	2.750	1.815-1.875	6.29	MS9896-54	5.250	4.315-4.375	10.87
MS9896-15	1.188	.252-.312	3.43	MS9896-35	2.875	1.940-2.000	6.52	MS9896-55	5.375	4.440-4.500	11.10
MS9896-16	1.250	.315-.375	3.54	MS9896-36	3.000	2.065-2.125	6.75	MS9896-56	5.500	4.565-4.625	11.33
MS9896-17	1.312	.378-.438	3.66	MS9896-37	3.125	2.190-2.250	6.98	MS9896-57	5.625	4.690-4.750	11.56
MS9896-18	1.375	.440-.500	3.77	MS9896-38	3.250	2.315-2.375	7.21	MS9896-58	5.750	4.815-4.875	11.79
MS9896-19	1.438	.502-.562	3.89	MS9896-39	3.375	2.440-2.500	7.44	MS9896-59	5.875	4.940-5.000	12.02
MS9896-20	1.500	.565-.625	4.00	MS9896-40	3.500	2.565-2.625	7.67	MS9896-60	6.000	5.065-5.125	12.25
MS9896-21	1.562	.628-.688	4.12	MS9896-41	3.625	2.690-2.750	7.89				
MS9896-22	1.625	.690-.750	4.23	MS9896-42	3.750	2.815-2.875	8.12				
MS9896-23	1.688	.752-.812	4.35	MS9896-43	3.875	2.940-3.000	8.35				

1. SHANK SHALL BE STRAIGHT WITHIN .003 PER INCH OF BOLT LENGTH.
2. THE CONCENTRICITY OF THREAD PD IN RELATION TO THE SHANK SHALL BE WITHIN .006 FIR.
3. THE CONCENTRICITY OF THE SHANK IN RELATION TO THE WASHER FACE DIAMETER AND DOUBLE HEXAGON CD SHALL BE WITHIN .003 FIR.
4. INCOMPLETE THREADS NOT TO ENTER FILLET.
5. MATERIAL: CORROSION RESISTANT STEEL AMS 5616.
6. MANUFACTURING SPECIFICATION: AMS 7470 EXCEPT HEAD SHALL BE UPSET.
7. HEAD TO SHANK FILLET SHALL BE COLD ROLLED AFTER HEAT TREATMENT TO REMOVE ALL VISUAL EVIDENCE OF GRINDING OR TOOL MARKS.
8. HARDNESS: ROCKWELL C32-38.
9. SURFACE TEXTURE: USAS 846.1-1962. UNLESS OTHERWISE SPECIFIED, SURFACES TO BE 125 MICROINCHES EXCEPT UPSET HEAD.
10. MAGNETIC PARTICLE INSPECTION PER AMS 2640.
11. BREAK SHARP EDGES .003-.015 UNLESS OTHERWISE SPECIFIED.
12. DIMENSIONS IN INCHES. UNLESS OTHERWISE SPECIFIED, TOLERANCES: LINEAR DIMENSIONS  $\pm .010$ , ANGULAR DIMENSIONS  $\pm 5^\circ$ .
13. DO NOT USE UNASSIGNED PART NUMBERS.

AS & AMS ARE SOCIETY OF AUTOMOTIVE ENGINEERS, INC. PUBLICATIONS.  
THIS STANDARD WAS DEVELOPED COOPERATIVELY WITH THE MILITARY SERVICES BY THE SAE AEROSPACE PROPULSION DIVISION.

P.A. USAF - 11 Other Code Navy - 45	TITLE BOLT, MACHINE - DOUBLE HEXAGON EXTENDED WASHER HEAD, DRILLED, AMS 5616, .3125-24 UNJF-3A	MILITARY STANDARD <b>MS9896(ASG)</b>
PROCUREMENT SPECIFICATION	SUPERSEDES:	SHEET OF

Review activities:  
USAF - 02, 45

This military standard is approved by the Department of the Air Force and the Naval Air Systems Command and is mandatory for use by these activities. All other military activities are required to employ this standard where suitable.

APPROVED 21 Apr 69 REVISED