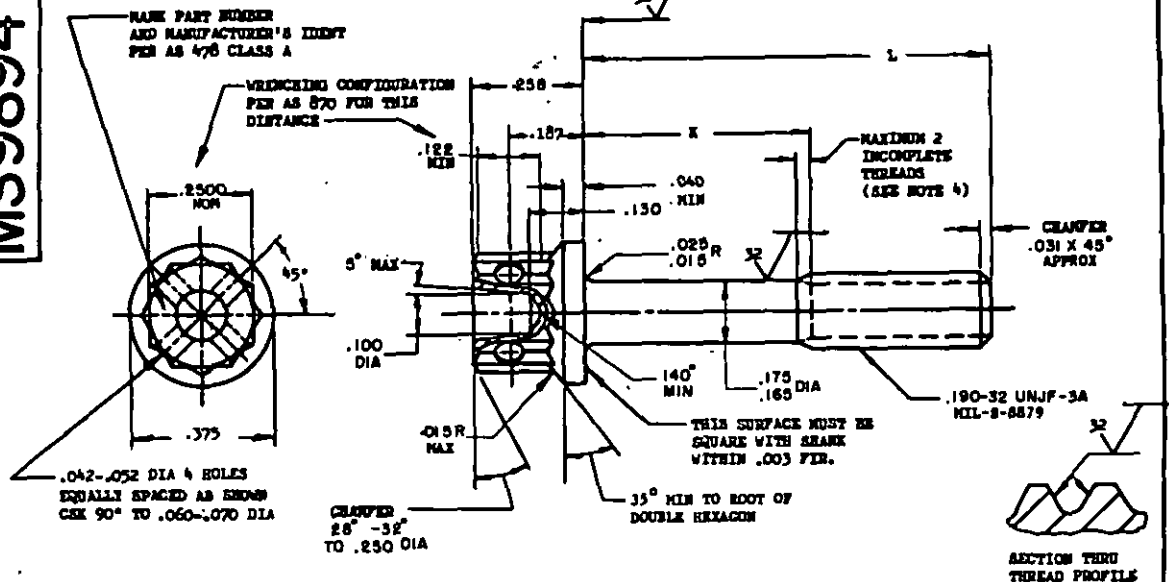


MS9894FED. SUP CLASS
5306

PART NO.	L	K	APPROX WEIGHT LB/100	PART NO.	L	K	APPROX WEIGHT LB/100	PART NO.	L	K	APPROX WEIGHT LB/100
MS9894-03	.312	.072-.092	.69	MS9894-19	1.312	.622-.682	1.33	MS9894-34	2.500	1.810-1.870	2.09
MS9894-04	.375	.072-.092	.73	MS9894-20	1.375	.685-.745	1.37	MS9894-35	2.625	1.935-1.995	2.17
MS9894-05	.438	.072-.092	.76	MS9894-21	1.438	.748-.808	1.41	MS9894-36	2.750	2.060-2.120	2.25
MS9894-06	.500	.072-.092	.80	MS9894-22	1.500	.810-.870	1.45	MS9894-37	2.875	2.185-2.245	2.33
MS9894-07	.562	.072-.092	.84	MS9894-23	1.562	.872-.932	1.49	MS9894-38	3.000	2.310-2.370	2.41
MS9894-08	.625	.072-.092	.88	MS9894-24	1.625	.935-.995	1.53	MS9894-39	3.125	2.435-2.495	2.49
MS9894-09	.688	.072-.092	.92	MS9894-25	1.688	.998-1.058	1.57	MS9894-40	3.250	2.560-2.620	2.57
MS9894-10	.750	.072-.120	.96	MS9894-26	1.750	1.060-1.120	1.61	MS9894-41	3.375	2.685-2.745	2.65
MS9894-11	.812	.122-.182	1.00	MS9894-27	1.812	1.122-1.182	1.65	MS9894-42	3.500	2.810-2.870	2.73
MS9894-12	.875	.185-.245	1.04	MS9894-28	1.875	1.185-1.245	1.69	MS9894-43	3.625	2.935-2.995	2.81
MS9894-13	.938	.248-.308	1.09	MS9894-29	1.938	1.248-1.308	1.73	MS9894-44	3.750	3.060-3.120	2.89
MS9894-14	1.000	.310-.370	1.13	MS9894-30	2.000	1.310-1.370	1.77	MS9894-45	3.875	3.185-3.245	2.97
MS9894-15	1.062	.372-.432	1.17	MS9894-31	2.125	1.435-1.495	1.85				
MS9894-16	1.125	.435-.495	1.21	MS9894-32	2.250	1.560-1.620	1.93				
MS9894-17	1.188	.498-.558	1.25	MS9894-33	2.375	1.685-1.745	2.01				
MS9894-18	1.250	.560-.620	1.29								

- SHANK SHALL BE STRAIGHT WITHIN .003 PER INCH OF BOLT LENGTH.
- THE CONCENTRICITY OF THREAD PD IN RELATION TO THE SHANK SHALL BE WITHIN .006 PER INCH.
- THE CONCENTRICITY OF THE SHANK IN RELATION TO THE WASHER FACE DIAMETER AND DOUBLE HEXAGON OD SHALL BE WITHIN .006 PER INCH.
- INCOMPLETE THREADS NOT TO ENTER FILLET.
- MATERIAL: CORROSION RESISTANT STEEL AMS 5616.
- MANUFACTURING SPECIFICATION: AMS 7470 EXCEPT HEAD SHALL BE UPSET.
- HEAD TO SHANK FILLET SHALL BE COLD ROLLED AFTER HEAT TREATMENT TO REMOVE ALL VISUAL EVIDENCE OF GRINDING OR TOOL MARKS.
- HARDNESS: ROCKWELL C32-38.
- SURFACE TEXTURE: USAS 846.1-1962. UNLESS OTHERWISE SPECIFIED, SURFACES TO BE 125 MICROINCHES EXCEPT UPSET HEAD.
- MAGNETIC PARTICLE INSPECTION PER AMS 2640.
- BREAK SHARP EDGES .003-.015 UNLESS OTHERWISE SPECIFIED.
- DIMENSIONS IN INCHES. UNLESS OTHERWISE SPECIFIED, TOLERANCES: LINEAR DIMENSIONS ± .010, ANGULAR DIMENSIONS ± 5°.
- DO NOT USE UNASSIGNED PART NUMBERS.

AS & AMS ARE SOCIETY OF AUTOMOTIVE ENGINEERS, INC. PUBLICATIONS.
THIS STANDARD WAS DEVELOPED COOPERATIVELY WITH THE MILITARY SERVICES BY THE SAE AIRSPACE PROPULSION DIVISION.

P.A. USAF - 11	TITLE	MILITARY STANDARD
Other Cont	BOLT, MACHINE-DOUBLE HEXAGON EXTENDED WASHER HEAD, DRILLED, AMS 5616, 190-32 UNJF-3A	MS9894
Rev 7 - AS		
PROCUREMENT SPECIFICATION	SUPSEDES:	SHEET 1 OF 1

DD FORM 672-1 (limited coordination)
AS use only

PREVIOUS EDITIONS OF THIS FORM ARE OBSOLETE.

5306- F028

APPROVED 21 Apr 69 REVISED

This military standard is approved by the Department of the Air Force and the Naval Air Systems Command and is mandatory for use by those activities. All other military activities are required to employ this standard where suitable.

Review activities:

USAF - 12, 85