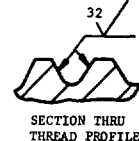
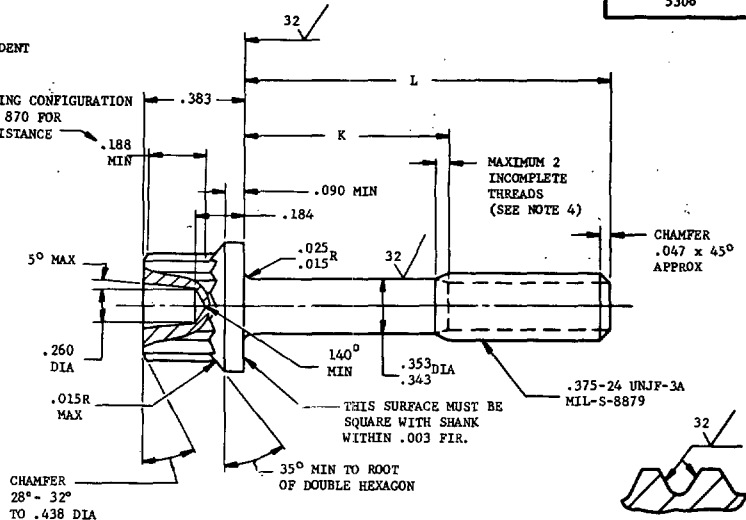
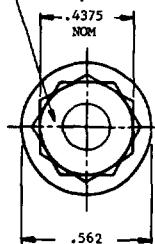


**MS9888 (ASG)**

**FED. SUP CLASS**  
5306

MARK PART NUMBER  
AND MANUFACTURER'S IDENT  
PER AS 478 CLASS A

WRENCHING CONFIGURATION  
PER AS 870 FOR  
THIS DISTANCE



CHAMFER  
28° - 32°  
TO .438 DIA

35° MIN TO ROOT  
OF DOUBLE HEXAGON

MSAP - 82, 85

Review activities:

This military standard is approved by the Department of the Air Force and the Naval Air Systems Command and is mandatory for use by these activities. All other military activities are required to employ this standard where suitable.

PART NO.	L	K	APPROX. WEIGHT LB/100	PART NO.	L	K	APPROX. WEIGHT LB/100	PART NO.	L	K	APPROX. WEIGHT LB/100
MS9888-04	.625	.088-.108	3.57	MS9888-25	1.938	.878-.938	7.14	MS9888-46	4.500	3.440-3.500	14.11
MS9888-05	.688	.088-.108	3.84	MS9888-26	2.000	.940-1.000	7.31	MS9888-47	4.625	3.565-3.625	14.45
MS9888-06	.750	.088-.108	3.91	MS9888-27	2.125	1.065-1.125	7.65	MS9888-48	4.750	3.690-3.750	14.79
MS9888-07	.812	.088-.108	4.08	MS9888-28	2.250	1.190-1.250	7.99	MS9888-49	4.875	3.815-3.875	15.13
MS9888-08	.875	.088-.108	4.25	MS9888-29	2.375	1.315-1.375	8.33	MS9888-50	5.000	3.940-4.000	15.47
MS9888-09	.938	.088-.108	4.42	MS9888-30	2.500	1.440-1.500	8.67	MS9888-51	5.125	4.065-4.125	15.81
MS9888-10	1.000	.088-.108	4.59	MS9888-31	2.625	1.565-1.625	9.01	MS9888-52	5.250	4.190-4.250	16.15
MS9888-11	1.062	.088-.108	4.76	MS9888-32	2.750	1.690-1.750	9.35	MS9888-53	5.375	4.315-4.375	16.49
MS9888-12	1.125	.088-.125	4.93	MS9888-33	2.875	1.815-1.875	9.69	MS9888-54	5.500	4.440-4.500	16.83
MS9888-13	1.188	.128-.188	5.10	MS9888-34	3.000	1.940-2.000	10.03	MS9888-55	5.625	4.565-4.625	16.17
MS9888-14	1.250	.190-.250	5.27	MS9888-35	3.125	2.065-2.125	10.37	MS9888-56	5.750	4.690-4.750	17.51
MS9888-15	1.312	.252-.312	5.44	MS9888-36	3.250	2.190-2.250	10.71	MS9888-57	5.875	4.815-4.875	17.85
MS9888-16	1.375	.315-.375	5.61	MS9888-37	3.375	2.315-2.375	11.05	MS9888-58	6.000	4.940-5.000	18.19
MS9888-17	1.438	.378-.438	5.78	MS9888-38	3.500	2.440-2.500	11.39				
MS9888-18	1.500	.440-.500	5.95	MS9888-39	3.625	2.565-2.625	11.73				
MS9888-19	1.562	.502-.562	6.12	MS9888-40	3.750	2.690-2.750	12.07				
MS9888-20	1.625	.565-.625	6.29	MS9888-41	3.875	2.815-2.875	12.41				
MS9888-21	1.688	.628-.688	6.46	MS9888-42	4.000	2.940-3.000	12.75				
MS9888-22	1.750	.690-.750	6.63	MS9888-43	4.125	3.065-3.125	13.09				
MS9888-23	1.812	.752-.812	6.80	MS9888-44	4.250	3.190-3.250	13.43				
MS9888-24	1.875	.815-.875	6.97	MS9888-45	4.375	3.315-3.375	13.77				

- SHANK SHALL BE STRAIGHT WITHIN .0025 PER INCH OF BOLT LENGTH.
- THE CONCENTRICITY OF THREAD PD IN RELATION TO THE SHANK SHALL BE WITHIN .006 FIR.
- THE CONCENTRICITY OF THE SHANK IN RELATION TO THE WASHER FACE DIAMETER AND DOUBLE HEXAGON OD SHALL BE WITHIN .009 FIR.
- INCOMPLETE THREADS NOT TO ENTER FILLET.
- MATERIAL: CORROSION RESISTANT STEEL AMS 5616.
- MANUFACTURING SPECIFICATION: AMS 7470 EXCEPT HEAD SHALL BE UPSET.
- HEAD TO SHANK FILLET SHALL BE COLD ROLLED AFTER HEAT TREATMENT TO REMOVE ALL VISUAL EVIDENCE OF GRINDING OR TOOL MARKS.
- HARDNESS: ROCKWELL C32-38.
- SURFACE TEXTURE: USAS B46.1-1962. UNLESS OTHERWISE SPECIFIED, SURFACES TO BE 125 MICROINCHES EXCEPT UPSET HEAD.
- MAGNETIC PARTICLE INSPECTION PER AMS 2640.
- BREAK SHARP EDGES .003-.015 UNLESS OTHERWISE SPECIFIED.
- DIMENSIONS IN INCHES. UNLESS OTHERWISE SPECIFIED, TOLERANCES: LINEAR DIMENSIONS  $\pm .010$ , ANGULAR DIMENSIONS  $\pm 5^\circ$ .
- DO NOT USE UNASSIGNED PART NUMBERS.

AS & AMS ARE SOCIETY OF AUTOMOTIVE ENGINEERS, INC. PUBLICATIONS.

THIS STANDARD WAS DEVELOPED COOPERATIVELY WITH THE MILITARY SERVICES BY THE SAE AEROSPACE PART STANDARDS DIVISION.

P.A. USAF - 11	TITLE	MILITARY STANDARD
Other Cus: Navy - AS	BOLT, MACHINE - DOUBLE HEXAGON EXTENDED WASHER HEAD, AMS 5616, .375-24 UNJF-3A	<b>MS9888 (ASG)</b>
PROCUREMENT SPECIFICATION	SUPERSEDES:	SHEET 1 OF 1

DD FORM 1 SEP 57 672-1 (Limited coordination)  
ASG use only

PREVIOUS EDITIONS OF THIS FORM ARE OBSOLETE.

Project No. 5306-F038  
U. S. GOVERNMENT PRINTING OFFICE: 1909-341-517/A-5029

REVISED  
APPROVED 3 Mar 69