

INCH-POUND

MS9879B
 29 February 2016
 SUPERSEDING
 MS9879A
 06 April 1983

MILITARY SPECIFICATION SHEET

SLEEVE, SWIVEL-PILOTED O-RING TUBE CONNECTION, BRAZING, AMS 5046

Reinstated after April 6 1983 and may be used for new and existing designs and acquisitions.

This specification sheet is approved for use by all Department and Agencies of the Department of Defense. The requirements for acquiring the product described herein shall consist of this specification sheet.

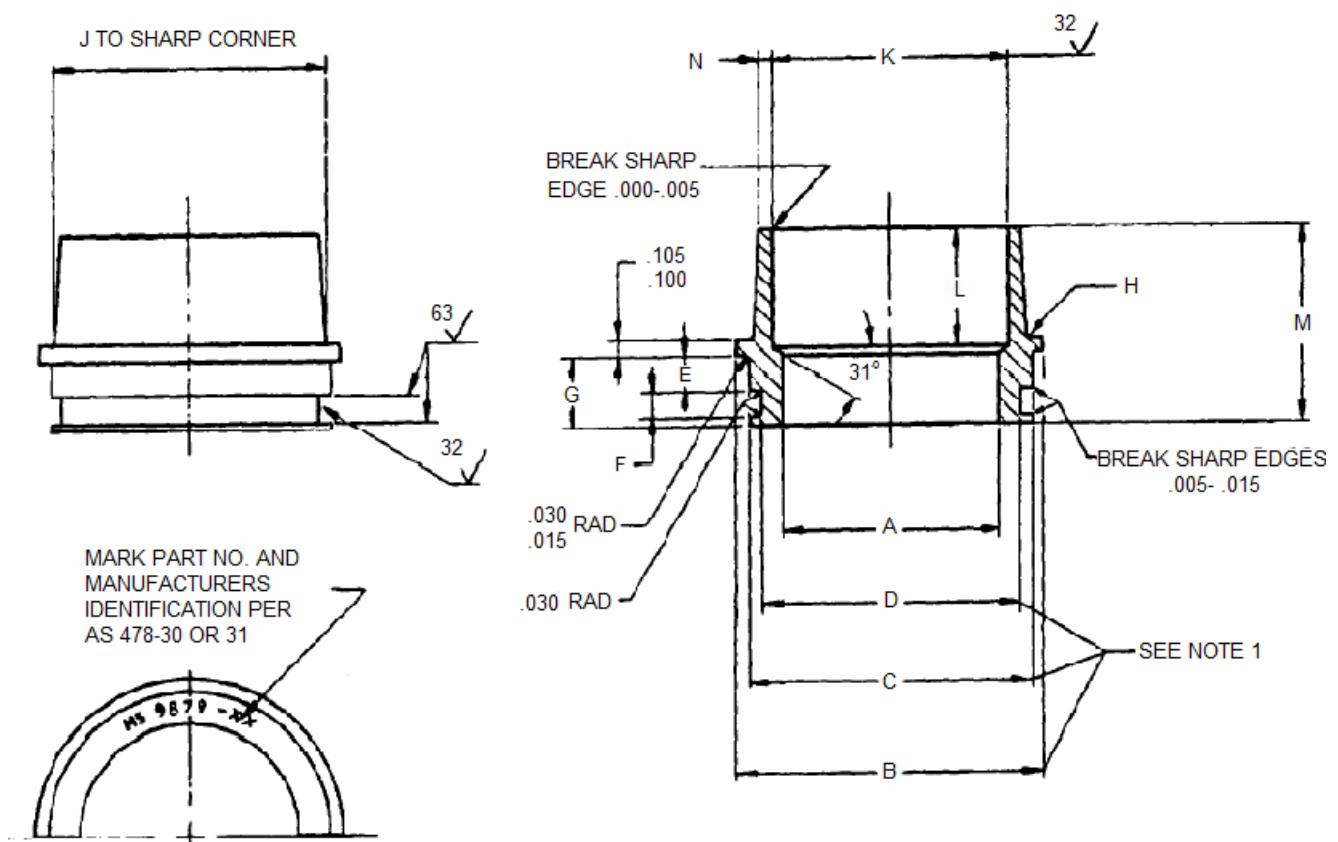


FIGURE 1. Swivel-piloted o-ring tube connection sleeve.

Comments, suggestions, or questions on this document should be addressed to Air Force Sustainment Center - Oklahoma City/AFLCMC/LZPES, 3001 Staff Drive, Suite 1AB81A, Tinker AFB, OK 73145 or emailed to ocalc.dsp@us.af.mil. Since contact information can change, you may want to verify the currency of this address information using the ASSIST Online database at <https://assist.dla.mil>.

MS9879B

TABLE I. Sleeve measurements.

PART NUMBER	TUBE OD NOMINAL	A DIA ± .005	B DIA + .005 - .000	C DIA + .000 - .002	D DIA + .002 - .000	E + .005 - .000	F + .010 - .000	G + .010 - .000	H RAD	J DIA + .000 - .010	K DIA + .002 - .000	L	M	N + .000 - .010	APPROX WEIGHT LBS/EA
MS9879-04	.250	.180	.598	.351	.244	.115	.114	.292	.015-.030	.325	.240	.376	.668	.020	.01
MS9879-05	.312	.242	.660	.413	.306	.115	.114	.292	.015-.030	.387	.302	.376	.668	.020	.01
MS9879-06	.375	.305	.723	.476	.369	.115	.114	.292	.015-.030	.450	.365	.376	.668	.020	.02
MS9879-08	.500	.430	.848	.601	.494	.115	.114	.292	.015-.030	.575	.489	.432	.724	.020	.03
MS9879-10	.625	.555	.973	.726	.619	.115	.114	.292	.015-.030	.700	.614	.479	.771	.020	.03
MS9879-12	.750	.680	1.168	.910	.760	.139	.155	.359	.015-.030	.875	.739	.510	.869	.020	.05
MS9879-14	.875	.777	1.359	1.081	.865	.182	.223	.478	.030-.050	1.000	.864	.510	.988	.020	.08
MS9879-16	1.000	.902	1.484	1.206	.990	.182	.223	.478	.030-.050	1.125	.989	.510	.988	.035	.09
MS9879-18	1.125	1.027	1.609	1.331	1.115	.182	.223	.478	.030-.050	1.250	1.114	.510	.988	.035	.11
MS9879-20	1.250	1.152	1.734	1.456	1.240	.182	.223	.478	.030-.050	1.375	1.239	.510	.988	.035	.11
MS9879-24	1.500	1.402	1.984	1.706	1.490	.182	.223	.478	.030-.050	1.625	1.484	.510	.988	.035	.14
MS9879-28	1.750	1.652	2.238	1.960	1.744	.182	.223	.478	.030-.050	1.875	1.734	.510	.988	.035	.16
MS9879-32	2.000	1.902	2.488	2.210	1.994	.182	.223	.478	.030-.050	2.125	1.984	.510	.988	.035	.18
MS9879-40	2.500	2.402	2.988	2.710	2.494	.182	.223	.478	.030-.050	2.625	2.484	.510	.988	.035	.23
MS9879-48	3.000	2.884	3.493	3.215	2.999	.182	.223	.478	.030-.050	3.156	2.984	.510	.988	.035	.29
MS9879-56	3.500	3.384	3.993	3.715	3.499	.182	.223	.478	.030-.050	3.656	3.479	.510	.988	.035	.35
MS9879-64	4.000	3.884	4.493	4.215	3.999	.182	.223	.476	.030-.050	4.156	3.979	.510	.988	.035	.40

Notes:

1. DIA D shall be concentric with DIA C within .0025 FIR and DIA B shall be concentric with DIA C within .005 FIR
2. Material: Corrosion resistant steel AMS 5646
3. Surface texture ASME-B46.1. Unless otherwise specified, surfaces to be 125 microinches
4. Break sharp edges .003 - .015 unless otherwise specified
5. Dimensions in inches. Unless otherwise specified: Tolerances: Linear Dimensions +/- .010, angular dimensions +/- 50
6. Do not use unassigned part numbers

References:

ASME B46.1, Surface Texture (Surface Roughness, Waviness, and Lay) (DoD Adopted)

SAE AMS5646, Steel, Corrosion and Heat-Resistant, Bars, Wire, Forgings, Tubing, and Rings 18 Cr – 11Ni – 0.60Cb(Nb) (347) Solution Heat Treated (Composition similar to UNS S34700) (DoD Adopted)

SAE AS478, Identification Marking Methods (DoD Adopted).

MS9879B

CONCLUDING MATERIAL

Custodians:

Navy - AS
Air Force - 71
DLA - GS

Preparing activity:

Air Force - 71

(Project 4730-2016-027)

NOTE: The activities listed above were interested in this document as of the date of this document. Since organization and responsibilities can change, you should verify the currency of the information above using the ASSIST Online database at <https://assist.dla.mil>.