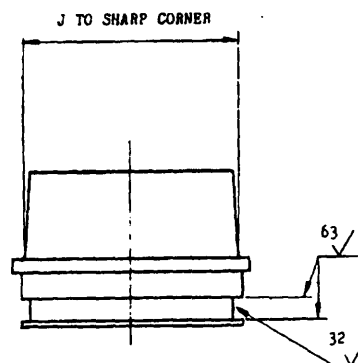


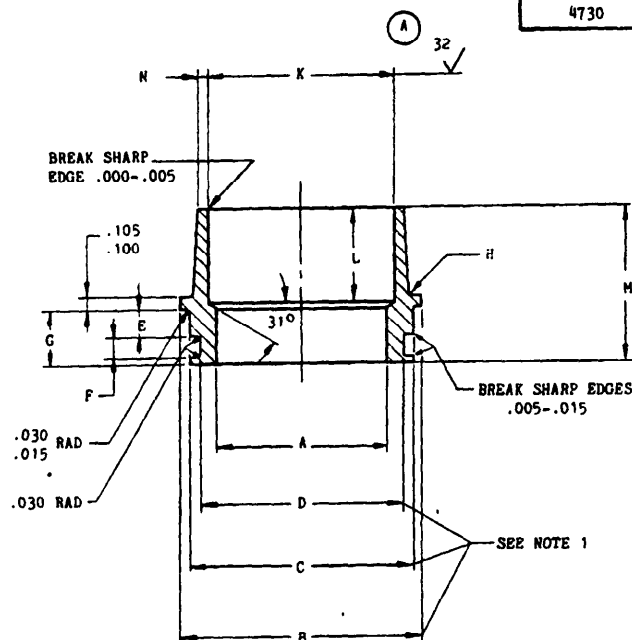
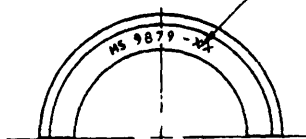
FED. SUP CLASS

4730

MS9879



MARK PART NO. AND
MANUFACTURERS
IDENTIFICATION PER
AS 478-30 OR 31



PART NUMBER	TUBE OD NOMINAL	A DIA ±.005	B DIA +.005 -.000	C DIA +.000 -.002	D DIA +.002 -.000	E +.005 -.000	F +.010 -.000	G +.010 -.000	H RAD	J DIA +.000 -.010	K DIA +.002 -.000	L	M	N +.000 -.010	APPROX WEIGHT LBS/EA
MS9879-04	.250	.180	.598	.351	.244	.115	.114	.292	.015-.030	.325	.240	.376	.668	.020	.01
MS9879-05	.312	.242	.660	.413	.306	.115	.114	.292	.015-.030	.387	.302	.376	.668	.020	.01
MS9879-06	.375	.305	.723	.476	.369	.115	.114	.292	.015-.030	.450	.365	.376	.668	.020	.02
MS9879-08	.500	.430	.848	.601	.494	.115	.114	.292	.015-.030	.575	.489	.432	.724	.020	.03
MS9879-10	.625	.555	.973	.726	.619	.115	.114	.292	.015-.030	.700	.614	.479	.771	.020	.03
MS9879-12	.750	.680	1.168	.910	.760	.139	.155	.359	.015-.030	.875	.739	.510	.869	.020	.05
MS9879-14	.875	.777	1.359	1.081	.865	.182	.223	.478	.030-.050	1.000	.864	.510	.988	.020	.08
MS9879-16	1.000	.902	1.484	1.206	.990	.182	.223	.478	.030-.050	1.125	.989	.510	.988	.035	.09
MS9879-18	1.125	1.027	1.609	1.331	1.115	.182	.223	.478	.030-.050	1.250	1.114	.510	.988	.035	.11
MS9879-20	1.250	1.152	1.734	1.456	1.240	.182	.223	.478	.030-.050	1.375	1.239	.510	.988	.035	.11
MS9879-24	1.500	1.402	1.984	1.706	1.490	.182	.223	.478	.030-.050	1.625	1.484	.510	.988	.035	.14
MS9879-28	1.750	1.652	2.238	1.960	1.744	.182	.223	.478	.030-.050	1.875	1.734	.510	.988	.035	.16
MS9879-32	2.000	1.902	2.488	2.210	1.994	.182	.223	.478	.030-.050	2.125	1.984	.510	.988	.035	.18
MS9879-40	2.500	2.402	2.988	2.710	2.494	.182	.223	.478	.030-.050	2.625	2.484	.510	.988	.035	.23
MS9879-48	3.000	2.884	3.493	3.215	2.999	.182	.223	.478	.030-.050	3.156	2.984	.510	.988	.035	.29
MS9879-56	3.500	3.384	3.993	3.715	3.499	.182	.223	.478	.030-.050	3.656	3.479	.510	.988	.035	.35
MS9879-64	4.000	3.884	4.493	4.215	3.999	.182	.223	.478	.030-.050	4.156	3.979	.510	.988	.035	.40

1. DIA D SHALL BE CONCENTRIC WITH DIA C WITHIN .0025 FIR AND DIA B SHALL BE CONCENTRIC WITH DIA C WITHIN .005 FIR
2. MATERIAL: CORROSION RESISTANT STEEL AMS 5646
3. SURFACE TEXTURE B46.1-1962. UNLESS OTHERWISE SPECIFIED, SURFACES TO BE 125 MICROINCHES
4. BREAK SHARP EDGES .003-.015 UNLESS OTHERWISE SPECIFIED
5. DIMENSIONS IN INCHES. UNLESS OTHERWISE SPECIFIED: TOLERANCES: LINEAR DIMENSIONS ±.010, ANGULAR DIMENSIONS ±5°
6. DO NOT USE UNASSIGNED PART NUMBERS

AS & AMS ARE SOCIETY OF AUTOMOTIVE ENGINEERS, INC. PUBLICATIONS.
THIS STANDARD WAS DEVELOPED COOPERATIVELY WITH THE SAE AEROSPACE PROPULSION DIVISION.

This standard has been approved by the Naval Air Systems Command and the Department of the Air Force and is mandatory for use by that activity. All other military activities are required to employ this standard where suitable.

Review activities:
USAF-11
NAVY-AS

P.A. USAF-11	TITLE	MILITARY STANDARD
Other Cust NAVY-AS	SLEEVE, SWIVEL-PILOTED O-RING TUBE CONNECTION, BRAZING, AMS 5646	MS 9879
PROCUREMENT SPECIFICATION NONE	SUPERSEDES:	SHEET 1 OF 1

DD FORM 672-1 (Coordinated)

PREVIOUS EDITIONS OF THIS FORM ARE OBSOLETE.

Project No. 4730- F554

APPROVED 24 MAR 1967 REVISED 6 APR 1983