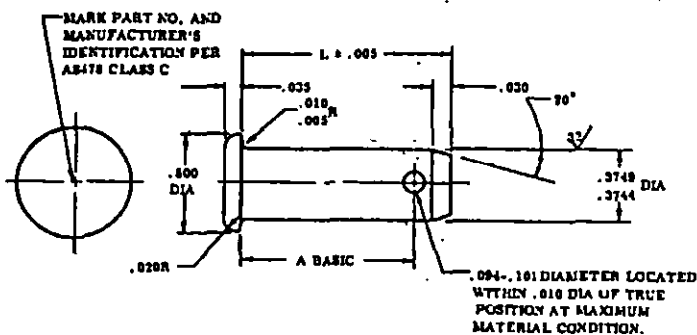


MS9847 (ASG)PRO. SUP CLASS
B315

PART NO.	A	L	APPROX WEIGHT LB/100	PART NO.	A	L	APPROX WEIGHT LB/100	PART NO.	A	L	APPROX WEIGHT LB/100
MS9847-09	.817	.604	1.890	MS9847-16	.854	1.641	5.350	MS9847-31	1.653	1.835	6.264
MS9847-10	.879	.686	2.180	MS9847-17	1.017	1.104	3.350	MS9847-32	1.934	2.011	6.470
MS9847-11	.642	.715	2.330	MS9847-18	1.079	1.168	3.740	MS9847-33	2.017	2.104	6.680
MS9847-12	.704	.791	2.580	MS9847-19	1.143	1.229	3.840	MS9847-34	2.079	2.168	6.830
MS9847-13	.767	.864	2.770	MS9847-20	1.204	1.291	4.130	MS9847-35	2.143	2.229	7.036
MS9847-14	.829	.916	3.060	MS9847-21	1.267	1.254	4.330	MS9847-36	2.204	2.291	7.240
MS9847-15	.892	.979	3.170	MS9847-22	1.329	1.416	4.826	MS9847-37	2.267	2.354	7.420
				MS9847-23	1.392	1.479	4.710				
				MS9847-24	1.454	1.641	4.806				
				MS9847-25	1.517	1.604	6.100				
				MS9847-26	1.579	1.868	5.300				
				MS9847-27	1.642	1.729	5.490				
				MS9847-28	1.704	1.791	5.890				
				MS9847-29	1.767	1.854	5.860				
				MS9847-30	1.829	1.916	6.080				

Revised activities: MAY - 80, 85

This military standard is approved by the Department of the Air Force and the Bureau of Naval Weapons and is mandatory for use by these activities. All other military activities are required to comply with this standard where applicable.

NOTES

1. MATERIAL: AMS 5616.
2. HARDNESS: ROCKWELL C45-50.
3. FLUORESCENT PENETRANT INSPECTION PER AMS2645.
4. HEAD DIA TO BE CONCENTRIC WITH SHANK DIA WITHIN .005 FIR.
5. SURFACE TEXTURE: ASA B46.1 1962, UNLESS OTHERWISE SPECIFIED, SURFACES TO BE 125 MICROINCHES.
6. BREAK SHARP EDGES .002-.015.
7. DIMENSIONS IN INCHES, UNLESS OTHERWISE SPECIFIED, TOLERANCES: LINEAR DIMENSIONS ±.010, ANGULAR DIMENSIONS ±5°.
8. DO NOT USE UNASSIGNED PART NUMBERS.

AS & AMS ARE SOCIETY OF AUTOMOTIVE ENGINEERS, INC. PUBLICATIONS.

THIS STANDARD WAS DEVELOPED COOPERATIVELY WITH THE MILITARY SERVICES BY THE SAE AEROSPACE PROPULSION DIVISION.

P.A. 1047 - 11	TITLE	MILITARY STANDARD
Order Code	PIN, STRAIGHT, HEADED .3749 DIAMETER, AMS5616	MS9847 (ASG)
NAVY - AS		
PROCUREMENT SPECIFICATION	SUPERSEDED	SHEET 1 OF 1
NOTE		

DD FORM 672-1 (Revised coordination)
ADD use only

APPROVED 29 Feb 68 REVISED