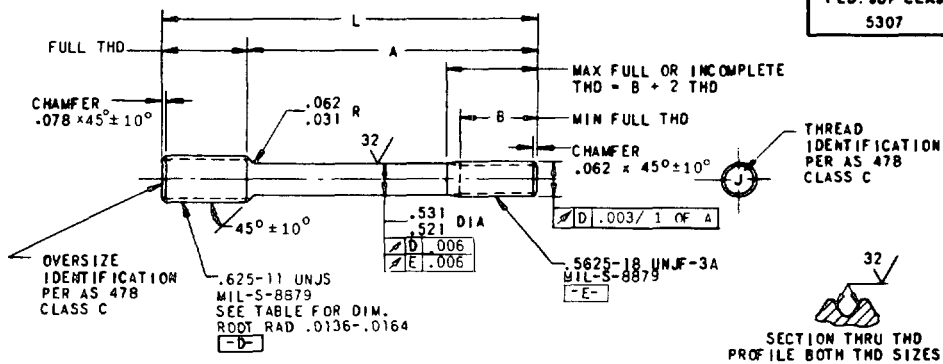


**MS9833**

OVERSIZE IDENTIFICATION			STANDARD	+ .003	+ .006	+ .009	+ .012	STANDARD
			⊙	③	⑥	⑨	⑫	
MAJOR DIAMETER			.620-.625	.620-.625	.620-.625	.629-.634	.629-.634	APPROX WEIGHT LBS/100
PD BEFORE PLATING			.5712-.5722	.5742-.5752	.5772-.5782	.5802-.5812	.5832-.5842	
PD AFTER PLATING			.5717-.5732	.5747-.5762	.5777-.5792	.5807-.5822	.5837-.5852	
PD LEAD THREAD			.5640-.5660	.5670-.5690	.5700-.5720	.5730-.5750	.5760-.5780	
MINOR DIA			.5203-.5273	.5233-.5303	.5263-.5333	.5293-.5363	.5323-.5393	
L	A	B	PART NUMBER	PART NUMBER	PART NUMBER	PART NUMBER	PART NUMBER	
2.188	.938	.812	MS9833-011	MS9833-012	MS9833-013	MS9833-014	MS9833-015	14.89
2.250	1.000	.875	MS9833-016	MS9833-017	MS9833-018	MS9833-019	MS9833-020	15.27
2.312	1.062	.938	MS9833-021	MS9833-022	MS9833-023	MS9833-024	MS9833-025	15.66
2.375	1.125	1.000	MS9833-026	MS9833-027	MS9833-028	MS9833-029	MS9833-030	16.04
2.438	1.188	1.000	MS9833-031	MS9833-032	MS9833-033	MS9833-034	MS9833-035	16.43
2.500	1.250	1.000	MS9833-036	MS9833-037	MS9833-038	MS9833-039	MS9833-040	16.81
2.562	1.312	1.000	MS9833-041	MS9833-042	MS9833-043	MS9833-044	MS9833-045	17.20
2.625	1.375	1.000	MS9833-046	MS9833-047	MS9833-048	MS9833-049	MS9833-050	17.58
2.688	1.438	1.000	MS9833-051	MS9833-052	MS9833-053	MS9833-054	MS9833-055	17.97
2.750	1.500	1.000	MS9833-056	MS9833-057	MS9833-058	MS9833-059	MS9833-060	18.35
2.812	1.562	1.000	MS9833-061	MS9833-062	MS9833-063	MS9833-064	MS9833-065	18.73
2.875	1.625	1.000	MS9833-066	MS9833-067	MS9833-068	MS9833-069	MS9833-070	19.12
2.938	1.688	1.000	MS9833-071	MS9833-072	MS9833-073	MS9833-074	MS9833-075	19.51
3.000	1.750	1.000	MS9833-076	MS9833-077	MS9833-078	MS9833-079	MS9833-080	19.89
3.125	1.875	1.000	MS9833-081	MS9833-082	MS9833-083	MS9833-084	MS9833-085	20.66
3.250	2.000	1.000	MS9833-086	MS9833-087	MS9833-088	MS9833-089	MS9833-090	21.43
3.375	2.125	1.000	MS9833-091	MS9833-092	MS9833-093	MS9833-094	MS9833-095	22.20
3.500	2.250	1.000	MS9833-096	MS9833-097	MS9833-098	MS9833-099	MS9833-100	22.97
3.625	2.375	1.000	MS9833-101	MS9833-102	MS9833-103	MS9833-104	MS9833-105	23.74
3.750	2.500	1.000	MS9833-106	MS9833-107	MS9833-108	MS9833-109	MS9833-110	24.51
3.875	2.625	1.000	MS9833-111	MS9833-112	MS9833-113	MS9833-114	MS9833-115	25.28
4.000	2.750	1.000	MS9833-116	MS9833-117	MS9833-118	MS9833-119	MS9833-120	26.05
4.125	2.875	1.000	MS9833-121	MS9833-122	MS9833-123	MS9833-124	MS9833-125	26.82
4.250	3.000	1.000	MS9833-126	MS9833-127	MS9833-128	MS9833-129	MS9833-130	27.59
4.375	3.125	1.000	MS9833-131	MS9833-132	MS9833-133	MS9833-134	MS9833-135	28.36
4.500	3.250	1.000	MS9833-136	MS9833-137	MS9833-138	MS9833-139	MS9833-140	29.13
4.625	3.375	1.000	MS9833-141	MS9833-142	MS9833-143	MS9833-144	MS9833-145	29.90
4.750	3.500	1.000	MS9833-146	MS9833-147	MS9833-148	MS9833-149	MS9833-150	30.67
4.875	3.625	1.000	MS9833-151	MS9833-152	MS9833-153	MS9833-154	MS9833-155	31.44
5.000	3.750	1.000	MS9833-156	MS9833-157	MS9833-158	MS9833-159	MS9833-160	32.21
5.125	3.875	1.000	MS9833-161	MS9833-162	MS9833-163	MS9833-164	MS9833-165	32.98
5.250	4.000	1.000	MS9833-166	MS9833-167	MS9833-168	MS9833-169	MS9833-170	33.75
5.375	4.125	1.000	MS9833-171	MS9833-172	MS9833-173	MS9833-174	MS9833-175	34.52
5.500	4.250	1.000	MS9833-176	MS9833-177	MS9833-178	MS9833-179	MS9833-180	35.29
5.625	4.375	1.000	MS9833-181	MS9833-182	MS9833-183	MS9833-184	MS9833-185	36.06
5.750	4.500	1.000	MS9833-186	MS9833-187	MS9833-188	MS9833-189	MS9833-190	36.83
5.875	4.625	1.000	MS9833-191	MS9833-192	MS9833-193	MS9833-194	MS9833-195	37.60
6.000	4.750	1.000	MS9833-196	MS9833-197	MS9833-198	MS9833-199	MS9833-200	38.37
6.125	4.875	1.000	MS9833-201	MS9833-202	MS9833-203	MS9833-204	MS9833-205	39.14
6.250	5.000	1.000	MS9833-206	MS9833-207	MS9833-208	MS9833-209	MS9833-210	39.91

1. MATERIAL: STEEL, AMS 6320, AMS 6322 OR AMS 6327
2. HARDNESS: ROCKWELL C26-32.
3. FINISH: CADMIUM PLATE AMS 2400. DIMENSIONS ARE AFTER PLATING EXCEPT WHERE SHOWN.
4. SURFACE TEXTURE: ANSI B46.1-1962. UNLESS OTHERWISE SPECIFIED, SURFACES TO BE 125 MICROINCHES.
5. DIMENSIONING AND TOLERANCING: ANSI Y14.5-1966.
6. MANUFACTURING SPECIFICATION: AMS 7456 EXCEPT THREAD FORM.
7. MAGNETIC PARTICLE INSPECTION PER AMS 2640 AFTER PLATING.
8. BREAK SHARP EDGES .003 - .015 UNLESS OTHERWISE SPECIFIED.
9. DIMENSIONS IN INCHES. UNLESS OTHERWISE SPECIFIED, TOLERANCES: LINEAR DIMENSIONS ± .010.
10. MARK PART NUMBER AND MANUFACTURERS IDENTIFICATION ON CONTAINER.
11. DO NOT USE UNASSIGNED PART NUMBERS.

AS & AMS ARE SOCIETY OF AUTOMOTIVE ENGINEERS, INC. PUBLICATIONS.  
THIS STANDARD WAS DEVELOPED COOPERATIVELY WITH THE MILITARY SERVICES BY THE SAE AEROSPACE PART STANDARDS DIV.

P.A. Air Force - II	TITLE	MILITARY STANDARD
Other Cast	STUD-STEPPED, 2 DIA ENGAGEMENT, STEEL	<b>MS9833</b>
Naval - AS	.625-11 UNJS x .5625-18 UNJF	
PROCUREMENT SPECIFICATION AMS 7456	SUPERSEDES:	SHEET 1 OF 1

DD FORM 672-1 (Limited coordination)

PREVIOUS EDITIONS OF THIS FORM ARE OBSOLETE.

U. S. GOVERNMENT PRINTING OFFICE: 1971-714-159/2838

This standard has been approved by the Dept. of the Air Force and the Department of the Navy and is mandatory for use by those activities. All other military activities are required to comply with this standard where applicable.

Review activities:  
Air Force - 82

APPROVED 27 Aug 71 REVISED