

INCH-POUND

MS9826B

02 August 2007

SUPERSEDING

MS9826A

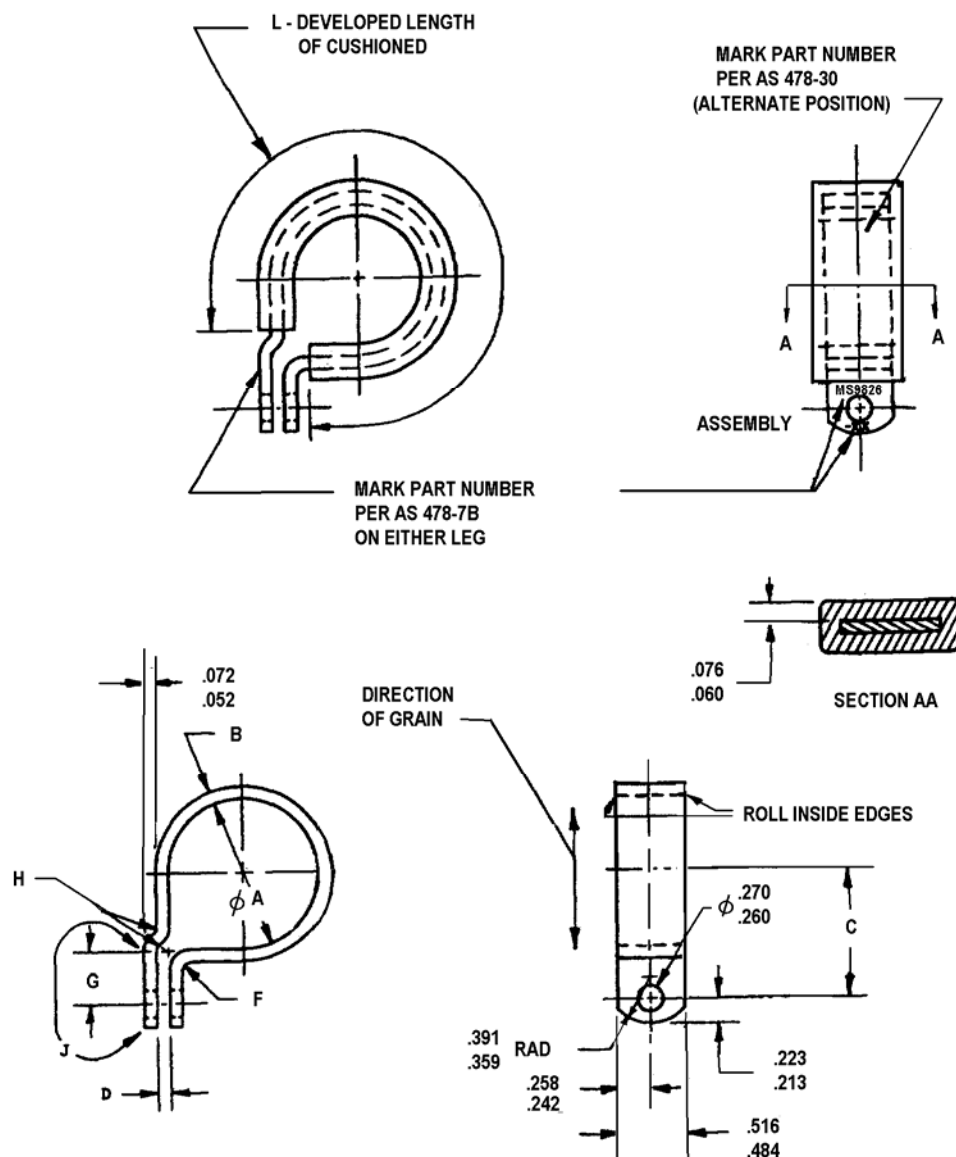
7 September 1972

DETAIL SPECIFICATION SHEET

CLAMP, LOOP-CUSHIONED, JOGGLED, CORROSION RESISTANT STEEL, .265 HOLE

This specification is approved for use by all Department and Agencies of the Department of Defense.

INACTIVE FOR NEW DESIGN AFTER 7 SEPTEMBER 1972
--

FIGURE 1. Clamp configuration and dimensions.

MS9826B

Table I. Clamp dimensions.

Part No. <u>6/</u>	Tube OD (REF)	A DIA (REF)	B $\pm .006$	C $\pm .010$	D	F Rad $\pm .016$	G $\pm .016$	H Rad $\pm .016$	L + .040 - .000	WT Approx Lb/100
MS9826-01N	.125	.250	.031	.457	.125-.141	.062	.312	.062	.679	.88
MS9826-02N	.188	.312	.031	.498	.125-.141	.062	.312	.062	.908	1.12
MS9826-03N	.250	.375	.031	.529	.125-.141	.062	.312	.062	1.097	1.30
MS9826-04N	.312	.438	.031	.560	.125-.141	.062	.312	.062	1.306	1.49
MS9826-05N	.375	.500	.031	.592	.125-.141	.062	.312	.062	1.515	1.67
MS9826-06N	.438	.562	.031	.623	.125-.141	.062	.312	.062	1.724	1.88
MS9826-07N	.500	.625	.031	.654	.125-.141	.062	.312	.062	1.930	2.06
MS9826-08N	.562	.688	.051	.752	.125-.141	.109	.375	.094	2.092	2.94
MS9826-09N	.625	.750	.051	.783	.125-.141	.109	.375	.094	2.299	3.18
MS9826-10N	.688	.812	.051	.814	.125-.141	.109	.375	.094	2.506	3.42
MS9826-11N	.750	.875	.051	.845	.125-.141	.109	.375	.094	2.721	3.68
MS9826-12N	.812	.938	.051	.877	.125-.141	.109	.375	.094	2.929	3.92
MS9826-13N	.875	1.000	.051	.908	.125-.141	.109	.375	.094	3.136	4.15
MS9826-14N	.938	1.062	.051	.939	.125-.141	.109	.375	.094	3.343	4.39
MS9826-15N	1.000	1.125	.051	.970	.125-.141	.109	.375	.094	3.555	4.63
MS9826-16N	1.062	1.188	.051	1.002	.125-.141	.109	.375	.094	3.769	4.88
MS9826-17N	1.125	1.250	.064	1.062	.156-.172	.125	.406	.125	3.914	5.93
MS9826-18N	1.188	1.312	.064	1.093	.156-.172	.125	.406	.125	4.125	6.20
MS9826-19N	1.250	1.375	.064	1.125	.156-.172	.125	.406	.125	4.339	6.48
MS9826-20N	1.312	1.438	.064	1.156	.156-.172	.125	.406	.125	4.551	6.76
MS9826-21N	1.375	1.500	.064	1.188	.156-.172	.125	.406	.125	4.754	7.03
MS9826-22N	1.438	1.562	.064	1.219	.156-.172	.125	.406	.125	5.066	7.35
MS9826-23N	1.500	1.625	.064	1.250	.156-.172	.125	.406	.125	5.173	7.58
MS9826-24N	1.562	1.688	.064	1.281	.156-.172	.125	.406	.125	5.386	7.86
MS9826-25N	1.625	1.750	.064	1.312	.156-.188	.125	.406	.125	5.585	8.12
MS9826-26N	1.688	1.812	.064	1.344	.156-.188	.125	.406	.125	5.798	8.39
MS9826-27N	1.750	1.875	.064	1.375	.156-.188	.125	.406	.125	6.011	8.67
MS9826-28N	1.812	1.938	.064	1.406	.156-.188	.125	.406	.125	6.223	8.96
MS9826-29N	1.875	2.000	.064	1.438	.156-.188	.125	.406	.125	6.436	9.24
MS9826-30N	1.938	2.062	.064	1.469	.156-.188	.125	.406	.125	6.643	9.50
MS9826-31N	2.000	2.125	.064	1.500	.156-.188	.125	.406	.125	6.840	9.77

MS9826B

Notes:

1. Dimensions are in inches. Unless otherwise specified, tolerance decimal $\pm .010$, angles $\pm 0.5^\circ$
2. Remove burrs and sharp edges.
3. Clamp shall be formed as shown but legs may spring open in free position.
4. "D" dimension applies when clamp is assembled on a test bar of nominal tube OD within $\pm .001$
Clamp must be flat in area "J" within .010 and holes must be in alignment within $\pm .010$ when clamp is mounted on test bar.
5. Material:

Clamp - Steel, CRES SAE-AMS5510

Cushion - Fabric, polyamide fiberglass, PTFE impregnated per SAE-AMS3677

- 6/. Code "N" has been added to part number listed on MS9826B to designate clamp, loop with non-asbestos cushion per SAE-AMS3677.
7. This standard takes precedence over referenced documents specified herein.

Changes from previous issue. Marginal notations are not used in this revision to identify changes with respect to the previous issue due to the extent of the changes.

CONCLUDING MATERIAL

Custodians:

Army-AV
Navy-AS
Air Force-99
DLA-IS

Preparing activity:

Navy-AS

(Project 5340-2007-003)

Review activities:

Army-AT
Navy-MC, SA, SH
Air Force-71

NOTE: The activities listed above were interested in this document as of the date of this document. Since organization and responsibilities can change, you should verify the currency of the information above using the ASSIST Online database at <http://assist.daps.dla.mil>.