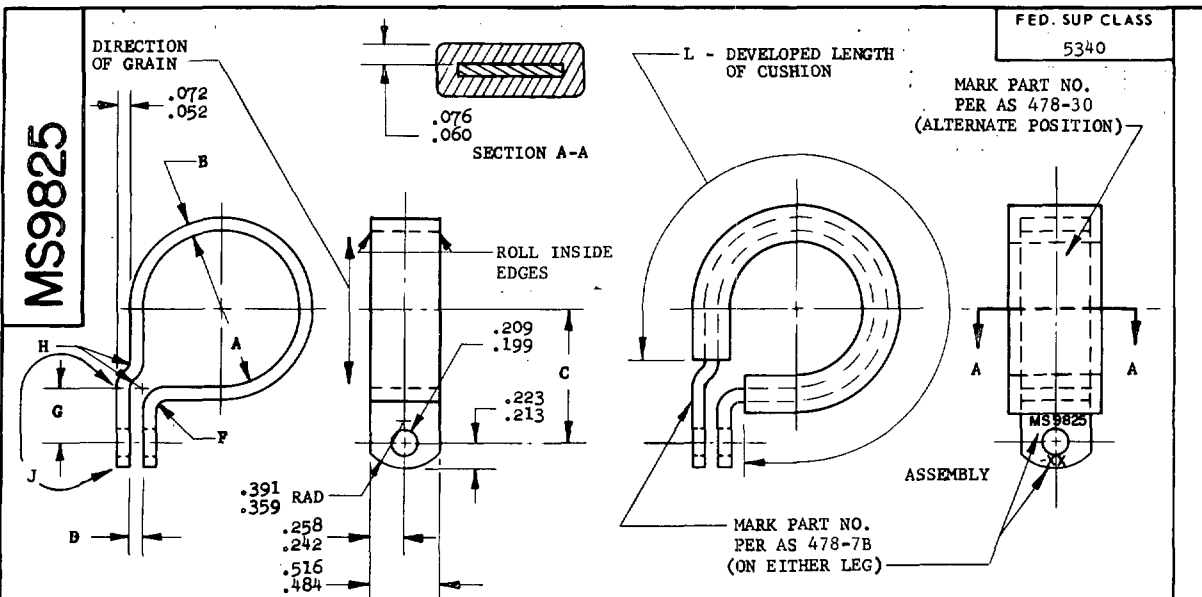


w 7



PART NO.	NOM TUBE OD	A DIA BASIC	B ±.006	C ±.010	D	F RAD ±.016	G ±.016	H RAD ±.016	L + .040 - .000	APPROX WEIGHT LB/100
MS9825-01	.125	.250	.031	.457	.125-.141	.062	.312	.062	.679	.95
MS9825-02	.188	.312	.031	.498	.125-.141	.062	.312	.062	.908	1.18
MS9825-03	.250	.375	.031	.529	.125-.141	.062	.312	.062	1.097	1.37
MS9825-04	.312	.438	.031	.560	.125-.141	.062	.312	.062	1.306	1.55
MS9825-05	.375	.500	.031	.592	.125-.141	.062	.312	.062	1.515	1.74
MS9825-06	.438	.562	.031	.623	.125-.141	.062	.312	.062	1.724	1.94
MS9825-07	.500	.625	.031	.654	.125-.141	.062	.312	.062	1.930	2.13
MS9825-08	.562	.688	.051	.752	.125-.141	.109	.375	.094	2.092	3.04
MS9825-09	.625	.750	.051	.783	.125-.141	.109	.375	.094	2.299	3.29
MS9825-10	.688	.812	.051	.814	.125-.141	.109	.375	.094	2.506	3.53
MS9825-11	.750	.875	.051	.845	.125-.141	.109	.375	.094	2.721	3.78
MS9825-12	.812	.938	.051	.877	.125-.141	.109	.375	.094	2.929	4.02
MS9825-13	.875	1.000	.051	.908	.125-.141	.109	.375	.094	3.136	4.25
MS9825-14	.938	1.062	.051	.939	.125-.141	.109	.375	.094	3.343	4.49
MS9825-15	1.000	1.125	.051	.970	.125-.141	.109	.375	.094	3.555	4.73
MS9825-16	1.062	1.188	.051	1.002	.125-.141	.109	.375	.094	3.769	4.99
MS9825-17	1.125	1.250	.064	1.062	.156-.172	.125	.406	.125	3.914	6.07
MS9825-18	1.188	1.312	.064	1.093	.156-.172	.125	.406	.125	4.125	6.34
MS9825-19	1.250	1.375	.064	1.125	.156-.172	.125	.406	.125	4.339	6.62
MS9825-20	1.312	1.438	.064	1.156	.156-.172	.125	.406	.125	4.551	6.90
MS9825-21	1.375	1.500	.064	1.188	.156-.172	.125	.406	.125	4.754	7.17
MS9825-22	1.438	1.562	.064	1.219	.156-.172	.125	.406	.125	5.066	7.49
MS9825-23	1.500	1.625	.064	1.250	.156-.172	.125	.406	.125	5.173	7.72
MS9825-24	1.562	1.688	.064	1.281	.156-.172	.125	.406	.125	5.386	8.00
MS9825-25	1.625	1.750	.064	1.312	.156-.188	.125	.406	.125	5.585	8.27
MS9825-26	1.688	1.812	.064	1.344	.156-.188	.125	.406	.125	5.798	8.53
MS9825-27	1.750	1.875	.064	1.375	.156-.188	.125	.406	.125	6.011	8.81
MS9825-28	1.812	1.938	.064	1.406	.156-.188	.125	.406	.125	6.223	9.10
MS9825-29	1.875	2.000	.064	1.438	.156-.188	.125	.406	.125	6.436	9.38
MS9825-30	1.938	2.062	.064	1.469	.156-.188	.125	.406	.125	6.643	9.65
MS9825-31	2.000	2.125	.064	1.500	.156-.188	.125	.406	.125	6.840	9.91

- CLAMP SHALL BE FORMED AS SHOWN BUT LEGS MAY SPRING OPEN IN FREE POSITION.
- "D" DIMENSION APPLIES WHEN CLAMP IS ASSEMBLED ON A TEST BAR OF NOMINAL TUBE OD WITHIN ±.001. CLAMP MUST BE FLAT IN AREA "J" WITHIN .010 AND HOLES MUST BE IN ALIGNMENT WITHIN .010 WHEN CLAMP IS MOUNTED ON TEST BAR.
- MATERIAL: CLAMP - STEEL, CRES AMS5510
CUSHION - FABRIC, WIRE REINFORCED ASBESTOS, POLYTETRAFLUOROETHYLENE IMPREGNATED, SINTERED AMS3839
- REMOVE BURRS AND SHARP EDGES.
- DIMENSIONS IN INCHES.
- DO NOT USE UNASSIGNED PART NUMBERS.

Ⓐ INACTIVE FOR DESIGN AFTER 7 SEPTEMBER 1972. NO SUPERSEDING STANDARD.

AS & AMS ARE SOCIETY OF AUTOMOTIVE ENGINEERS, INC. PUBLICATIONS.
THIS STANDARD WAS DEVELOPED COOPERATIVELY WITH THE SAE AEROSPACE PROPULSION DIVISION.

P.A. USAF - 11 Other Cust Navy - AS	TITLE CLAMP, LOOP-CUSHIONED, JOGGLED, CORROSION RESISTING. STEEL, .204 HOLE	MILITARY STANDARD MS9825
PROCUREMENT SPECIFICATION NONE	SUPERSEDES:	SHEET 1 OF 1

DD FORM 672-1 (Limited coordination)

PREVIOUS EDITIONS OF THIS FORM ARE OBSOLETE.

1741

-88

DATE

REVISED 7 Sep 72
APPROVED 20 Dec 66User activities:
USAF - 11
Navy - ASReview activities:
USAF - 11
Navy - AS

This standard has been approved by the Naval Air Systems Command and the Department of the USAF (11) and is mandatory for use by that activity. All other military activities are required to employ this standard where suitable.

95