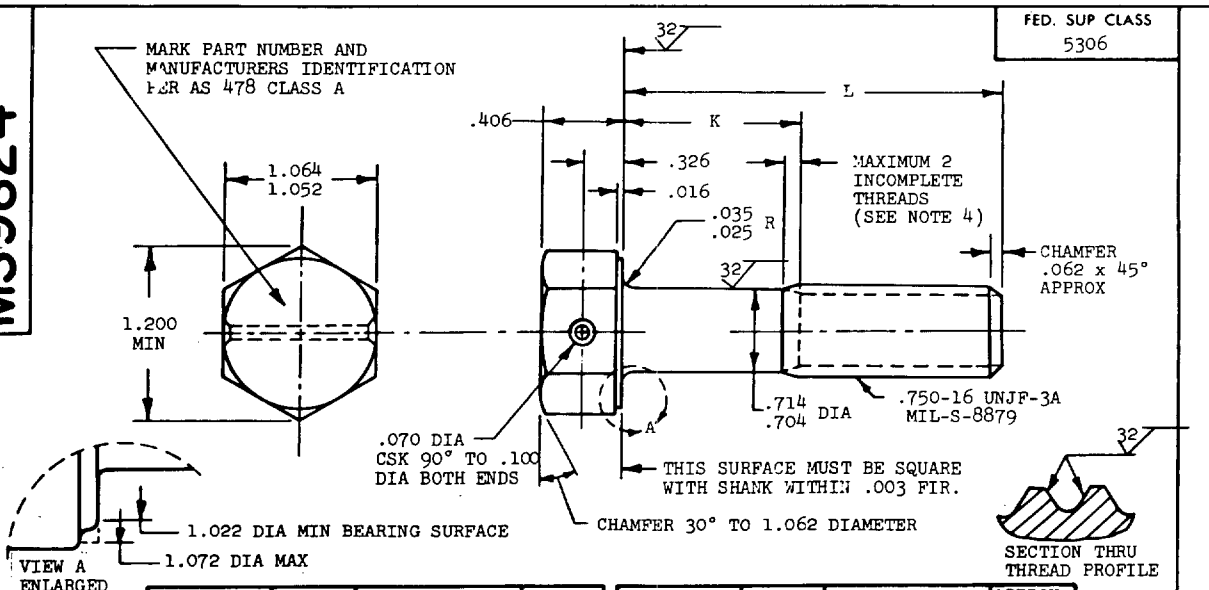


**MS9824**

PART NUMBER	L	K	APPROX WEIGHT LB/100	PART NUMBER	L	K	APPROX WEIGHT LB/100
MS9824-04	1.125	.129-.149	23.45	MS9824-31	3.625	1.815-1.875	51.16
MS9824-05	1.188	.129-.149	24.14	MS9824-32	3.750	1.940-2.000	52.54
MS9824-06	1.250	.129-.149	24.83	MS9824-33	3.875	2.065-2.125	53.92
MS9824-07	1.312	.129-.149	25.53	MS9824-34	4.000	2.190-2.250	55.31
MS9824-08	1.375	.129-.149	26.22	MS9824-35	4.125	2.315-2.375	56.69
MS9824-09	1.438	.129-.149	26.91	MS9824-36	4.250	2.440-2.500	58.08
MS9824-10	1.500	.129-.149	27.60	MS9824-37	4.375	2.565-2.625	59.46
MS9824-11	1.562	.129-.149	28.30	MS9824-38	4.500	2.690-2.750	60.85
MS9824-12	1.625	.129-.149	28.99	MS9824-39	4.625	2.815-2.875	62.23
MS9824-13	1.688	.129-.149	29.68	MS9824-40	4.750	2.940-3.000	63.62
MS9824-14	1.750	.129-.149	30.38	MS9824-41	4.875	3.065-3.125	65.00
MS9824-15	1.812	.129-.149	31.07	MS9824-42	5.000	3.190-3.250	66.38
MS9824-16	1.875	.129-.149	31.76	MS9824-43	5.125	3.315-3.375	67.77
MS9824-17	1.938	.129-.188	32.45	MS9824-44	5.250	3.440-3.500	69.15
MS9824-18	2.000	.190-.250	33.15	MS9824-45	5.375	3.565-3.625	70.54
MS9824-19	2.125	.315-.375	34.53	MS9824-46	5.500	3.690-3.750	71.93
MS9824-20	2.250	.440-.500	35.92	MS9824-47	5.625	3.815-3.875	73.32
MS9824-21	2.375	.565-.625	37.30	MS9824-48	5.750	3.940-4.000	74.70
MS9824-22	2.500	.690-.750	38.69	MS9824-49	5.875	4.065-4.125	76.08
MS9824-23	2.625	.815-.875	40.07	MS9824-50	6.000	4.190-4.250	77.47
MS9824-24	2.750	.940-1.000	41.45				
MS9824-25	2.875	1.065-1.125	42.84				
MS9824-26	3.000	1.190-1.250	44.22				
MS9824-27	3.125	1.315-1.375	45.61				
MS9824-28	3.250	1.440-1.500	46.99				
MS9824-29	3.375	1.565-1.625	48.38				
MS9824-30	3.500	1.690-1.750	49.77				

- SHANK SHALL BE STRAIGHT WITHIN .002 TOTAL PER INCH OF BOLT LENGTH.
- THE CONCENTRICITY OF THREAD PD IN RELATION TO THE SHANK SHALL BE WITHIN .006 FIR.
- THE CONCENTRICITY OF THE SHANK IN RELATION TO THE WASHER FACE DIAMETER AND HEXAGON SHALL BE WITHIN .032 FIR.
- INCOMPLETE THREADS NOT TO ENTER FILLET.
- MATERIAL: CORROSION RESISTANT STEEL AMS 5643.
- HARDNESS: ROCKWELL C32-38.
- MANUFACTURING SPECIFICATION: AMS 7474.
- FLUORESCENT PENETRANT INSPECTION PER AMS 2645.
- SURFACE TEXTURE: USAS B46.1-1962. UNLESS OTHERWISE SPECIFIED, SURFACES TO BE 125 MICRONS EXCEPT UPSET HEAD.
- BREAK SHARP EDGES .003-.015 UNLESS OTHERWISE SPECIFIED.
- DIMENSIONS IN INCHES. UNLESS OTHERWISE SPECIFIED, TOLERANCES: LINEAR DIMENSIONS  $\pm .010$ , ANGULAR DIMENSIONS  $\pm 5^\circ$ .
- DO NOT USE UNASSIGNED PART NUMBERS.

**REINSTATED 31 OCT 84**

AS & AMS ARE SOCIETY OF AUTOMOTIVE ENGINEERS, INC. PUBLICATIONS.  
THIS STANDARD WAS DEVELOPED COOPERATIVELY WITH THE MILITARY SERVICES BY THE SAE AEROSPACE PART STANDARDS DIV.

P.A. AS	INTERNATIONAL INTEREST	TITLE	MILITARY STANDARD
Other Cust AV 99	(B)	BOLT, MACHINE - HEXAGON HEAD, DRILLED, 1 HOLE, PD SHANK, AMS 5643, .750-16 UNJF-3A	<b>MS9824</b>
PROCUREMENT SPECIFICATION NONE	SUPERSEDES:	PAGE 1 OF 1	