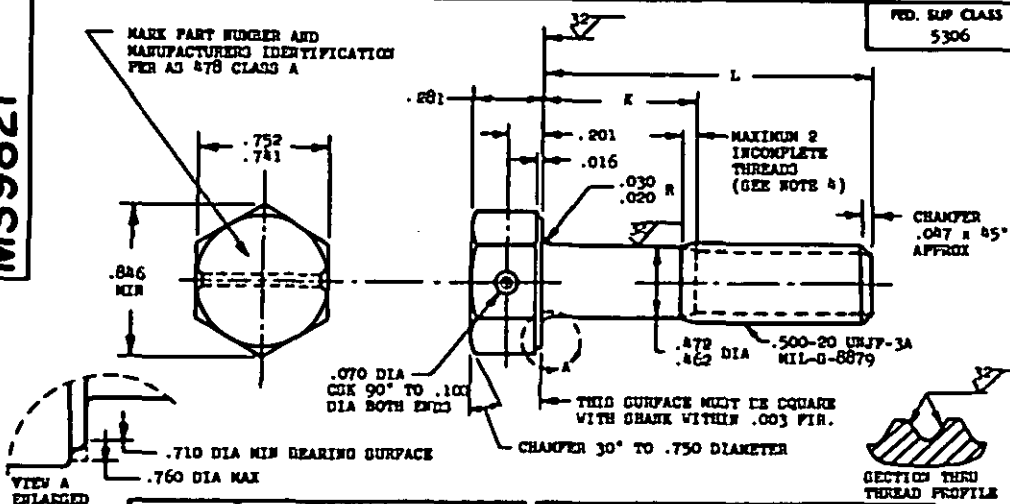


MS9821

PART NUMBER	L	K	APPROX WEIGHT LB/100	PART NUMBER	L	K	APPROX WEIGHT LB/100
MS9821-03	.750	.105-.125	7.36	MS9821-31	3.000	1.690-1.750	18.19
MS9821-04	.812	.105-.125	7.66	MS9821-32	3.125	1.815-1.875	18.80
MS9821-05	.875	.105-.125	7.96	MS9821-33	3.250	1.940-2.000	19.39
MS9821-06	.938	.105-.125	8.26	MS9821-34	3.375	2.065-2.125	20.00
MS9821-07	1.000	.105-.125	8.46	MS9821-35	3.500	2.190-2.250	20.60
MS9821-08	1.062	.105-.125	8.66	MS9821-36	3.625	2.315-2.375	21.20
MS9821-09	1.125	.105-.125	8.86	MS9821-37	3.750	2.440-2.500	21.80
MS9821-10	1.188	.105-.125	9.16	MS9821-38	3.875	2.565-2.625	22.40
MS9821-11	1.250	.105-.125	9.46	MS9821-39	4.000	2.690-2.750	23.01
MS9821-12	1.312	.105-.125	9.76	MS9821-40	4.125	2.815-2.875	23.61
MS9821-13	1.375	.105-.125	10.07	MS9821-41	4.250	2.940-3.000	24.20
MS9821-14	1.438	.105-.125	10.37	MS9821-42	4.375	3.065-3.125	24.81
MS9821-15	1.500	.105-.125	10.67	MS9821-43	4.500	3.190-3.250	25.41
MS9821-16	1.562	.105-.125	10.97	MS9821-44	4.625	3.315-3.375	26.02
MS9821-17	1.625	.105-.125	11.26	MS9821-45	4.750	3.440-3.500	26.61
MS9821-18	1.688	.105-.125	11.57	MS9821-46	4.875	3.565-3.625	27.22
MS9821-19	1.750	.105-.125	11.87	MS9821-47	5.000	3.690-3.750	27.82
MS9821-20	1.812	.105-.125	12.17	MS9821-48	5.125	3.815-3.875	28.42
MS9821-21	1.875	.105-.125	12.47	MS9821-49	5.250	3.940-4.000	29.02
MS9821-22	1.938	.105-.125	12.77	MS9821-50	5.375	4.065-4.125	29.62
MS9821-23	2.000	.105-.125	13.07	MS9821-51	5.500	4.190-4.250	30.23
MS9821-24	2.125	.105-.125	13.37	MS9821-52	5.625	4.315-4.375	30.83
MS9821-25	2.250	.105-.125	13.67	MS9821-53	5.750	4.440-4.500	31.43
MS9821-26	2.375	.105-.125	13.97	MS9821-54	5.875	4.565-4.625	32.03
MS9821-27	2.500	.105-.125	14.26	MS9821-55	6.000	4.690-4.750	32.63
MS9821-28	2.625	.105-.125	14.57				
MS9821-29	2.750	.105-.125	14.87				
MS9821-30	2.875	.105-.125	15.17				

- SHANK SHALL BE STRAIGHT WITHIN .002 TOTAL PER INCH OF GOLT LENGTH.
- THE CONCENTRICITY OF THREAD PD IN RELATION TO THE SHANK SHALL BE WITHIN .006 FIR.
- THE CONCENTRICITY OF THE SHANK IN RELATION TO THE WACHER FACE DIAMETER AND HEXAGON SHALL BE WITHIN .003 FIR.
- INCOMPLETE THREADS NOT TO ENTER WILLET.
- MATERIAL: CORROSION RESISTANT STEEL AMS 5643.
- HARDNESS: ROCKWELL C32-38.
- MANUFACTURING SPECIFICATION: AMS 7474.
- FLUORESCENT PENETRANT INSPECTION PER AMS 2645.
- SURFACE TEXTURE: UN32 B46.1-1962. UNLESS OTHERWISE SPECIFIED, SURFACES TO BE 125 MICROINCHES EXCEPT UPJET HEAD.
- BREAK SHARP EDGES .003-.015 UNLESS OTHERWISE SPECIFIED.
- DIMENSIONS IN INCHES. UNLESS OTHERWISE SPECIFIED, TOLERANCES: LINEAR DIMENSIONS ±.010, ANGULAR DIMENSIONS ±5°.
- DO NOT USE UNASSIGNED PART NUMBERS.

AS 4 & AMS ARE SOCIETY OF AUTOMOTIVE ENGINEERS, INC. PUBLICATIONS.
THIS STANDARD WAS DEVELOPED COOPERATIVELY WITH THE MILITARY SERVICES BY THE DAE AEROSPACE PART STANDARDS DIV.

P.A. USAF-11	INTERNATIONAL INTEREST	TITLE	MILITARY STANDARD
Other Code ARMY-AV NAVY-A2	ASAC AIR STD 17/2	BOLT, MACHINE - HEXAGON HEAD, DRILLED, 1 HOLE, PD SHANK, AMS 5643, .500-20 UNJF-3A	MS9821
PROCUREMENT SPECIFICATION NONE	SUPPLIES		SHEET 1 OF 1

DD FORM 672-1 (Coordinated)

PREVIOUS EDITIONS OF THIS SPEC AND MODS ARE

Review activities: USAF-02

APPROVED 11 MAR 70 REVISED

This advisory standard is approved by the Department of Defense and is mandatory on all activities. Subsequent to all new engineering and design applications and for repetitive use shall be made from this document.