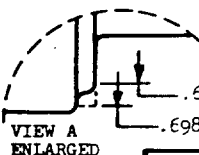
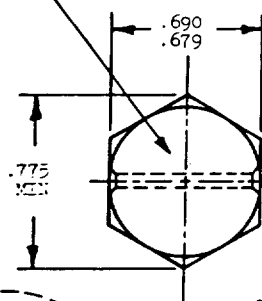


MS9820

MARK PART NUMBER AND
MANUFACTURERS IDENTIFICATION
PER AS 478 CLASS A

VIEW A
ENLARGED

.070 DIA
CSK 90° TO .100
DIA BOTH ENDS

THIS SURFACE MUST BE SQUARE
WITH SHANK WITHIN .003 FIR.

CHAMFER 30° TO .688 DIAMETER

MAXIMUM 2
INCOMPLETE
THREADS
(SEE NOTE 4)

CHAMFER
.047 x 45°
APPROX

SECTION THRU
THREAD PROFILE

FED. SUP CLASS
5306

PART NUMBER	L	K	APPROX WEIGHT LB/100	PART NUMBER	L	K	APPROX WEIGHT LB/100
MS9820-04	.688	.105-.125	5.54	MS9820-31	2.750	1.565-1.625	13.16
MS9820-05	.750	.105-.125	5.81	MS9820-32	2.875	1.690-1.750	13.61
MS9820-06	.812	.105-.125	6.07	MS9820-33	3.000	1.815-1.875	14.06
MS9820-07	.875	.105-.125	6.34	MS9820-34	3.125	1.940-2.000	14.51
MS9820-08	.938	.105-.125	6.58	MS9820-35	3.250	2.065-2.125	14.97
MS9820-09	1.000	.105-.125	6.81	MS9820-36	3.375	2.190-2.250	15.42
MS9820-10	1.062	.105-.125	7.04	MS9820-37	3.500	2.315-2.375	15.88
MS9820-11	1.125	.105-.125	7.26	MS9820-38	3.625	2.440-2.500	16.32
MS9820-12	1.188	.105-.125	7.49	MS9820-39	3.750	2.565-2.625	16.78
MS9820-13	1.250	.105-.125	7.72	MS9820-40	3.875	2.690-2.750	17.23
MS9820-14	1.312	.128-.188	7.95	MS9820-41	4.000	2.815-2.875	17.69
MS9820-15	1.375	.190-.250	8.17	MS9820-42	4.125	2.940-3.000	18.14
MS9820-16	1.438	.252-.312	8.40	MS9820-43	4.250	3.065-3.125	18.59
MS9820-17	1.500	.315-.375	8.63	MS9820-44	4.375	3.190-3.250	19.04
MS9820-18	1.562	.378-.438	8.85	MS9820-45	4.500	3.315-3.375	19.49
MS9820-19	1.625	.440-.500	9.07	MS9820-46	4.625	3.440-3.500	19.95
MS9820-20	1.688	.502-.562	9.30	MS9820-47	4.750	3.565-3.625	20.40
MS9820-21	1.750	.565-.625	9.53	MS9820-48	4.875	3.690-3.750	20.86
MS9820-22	1.812	.628-.688	9.76	MS9820-49	5.000	3.815-3.875	21.30
MS9820-23	1.875	.690-.750	9.98	MS9820-50	5.125	3.940-4.000	21.76
MS9820-24	1.938	.752-.812	10.21	MS9820-51	5.250	4.065-4.125	22.21
MS9820-25	2.000	.815-.875	10.44	MS9820-52	5.375	4.190-4.250	22.67
MS9820-26	2.125	.940-1.000	10.89	MS9820-53	5.500	4.315-4.375	23.12
MS9820-27	2.250	1.065-1.125	11.34	MS9820-54	5.625	4.440-4.500	23.58
MS9820-28	2.375	1.190-1.250	11.79	MS9820-55	5.750	4.565-4.625	24.02
MS9820-29	2.500	1.315-1.375	12.25	MS9820-56	5.875	4.690-4.750	24.48
MS9820-30	2.625	1.440-1.500	12.70	MS9820-57	6.000	4.815-4.875	24.93

- SHANK SHALL BE STRAIGHT WITHIN .0025 TOTAL PER INCH OF BOLT LENGTH.
- THE CONCENTRICITY OF THREAD PD IN RELATION TO THE SHANK SHALL BE WITHIN .006 FIR.
- THE CONCENTRICITY OF THE SHANK IN RELATION TO THE WASHER FACE DIAMETER AND HEXAGON SHALL BE WITHIN .019 FIR.
- INCOMPLETE THREADS NOT TO ENTER FILLET.
- MATERIAL: CORROSION RESISTANT STEEL AMS 5643.
- HARDNESS: ROCKWELL C32-38.
- MANUFACTURING SPECIFICATION: AMS 7474.
- FLUORESCENT PENETRANT INSPECTION PER AMS 2645.
- SURFACE TEXTURE: USAS B46.1-1962. UNLESS OTHERWISE SPECIFIED, SURFACES TO BE 125 MICROINCHES EXCEPT UPSET HEAD.
- BREAK SHARP EDGES .003-.015 UNLESS OTHERWISE SPECIFIED.
- DIMENSIONS IN INCHES. UNLESS OTHERWISE SPECIFIED, TOLERANCES: LINEAR DIMENSIONS $\pm .010$, ANGULAR DIMENSIONS $\pm 5^\circ$.
- DO NOT USE UNASSIGNED PART NUMBERS.

AS & AMS ARE SOCIETY OF AUTOMOTIVE ENGINEERS, INC. PUBLICATIONS.
THIS STANDARD WAS DEVELOPED COOPERATIVELY WITH THE MILITARY SERVICES BY THE SAE AEROSPACE PART STANDARDS DIV.

P.A. AS	INTERNATIONAL INTEREST	TITLE BOLT, MACHINE - HEXAGON HEAD, DRILLED, 1 HOLE, PD SHANK, AMS 5643, .4375-20 UNJF-3A	MILITARY STANDARD MS9820
Other Cust AV 99			PAGE 1 OF 1
PROCUREMENT SPECIFICATION NONE	SUPERSEDES:		5306-0888

DD FORM 672-1 (Coordinated)

PREVIOUS EDITIONS OF THIS FORM ARE OBSOLETE

APPROVED 11 MAR 70 REVISED 21 DEC 83 31 OCT 84

Review activities:
AIR FORCE-82
DLA-IS

This military standard is approved for use by all Departments and Agencies of the Department of Defense. Selection for all new engineering and design applications and for repetitive use shall be made from this document when applicable.