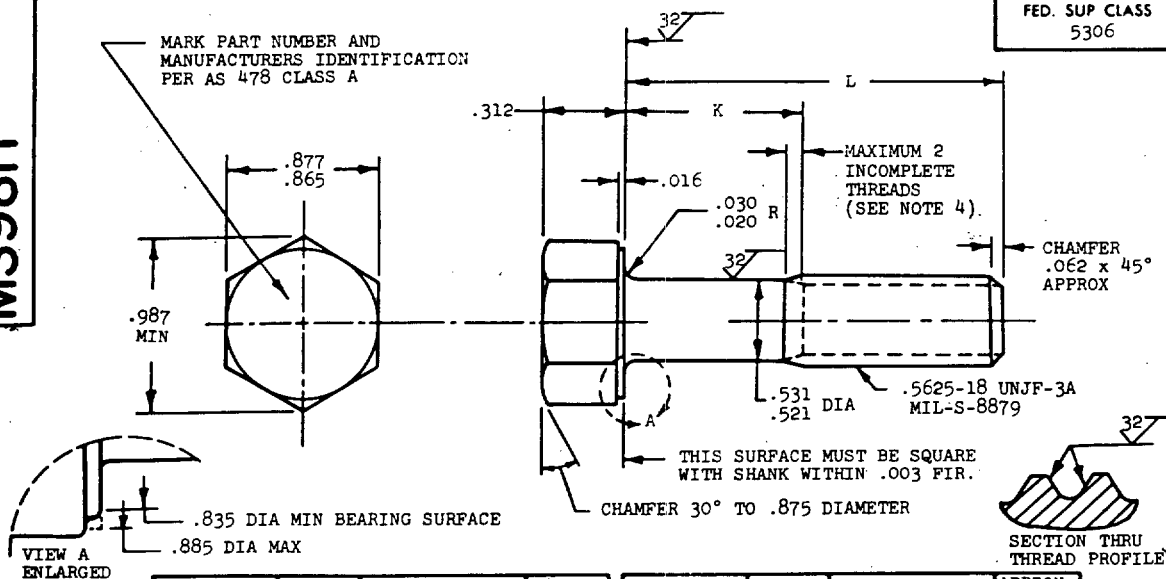


MS9811

MARK PART NUMBER AND
MANUFACTURERS IDENTIFICATION
PER AS 478 CLASS A



FED. SUP CLASS
5306

PART NUMBER	L	K	APPROX WEIGHT LB/100	PART NUMBER	L	K	APPROX WEIGHT LB/100
MS9811-04	.875	.113-.133	11.14	MS9811-31	3.125	1.690-1.750	24.86
MS9811-05	.938	.113-.133	11.51	MS9811-32	3.250	1.815-1.875	25.63
MS9811-06	1.000	.113-.133	11.89	MS9811-33	3.375	1.940-2.000	26.38
MS9811-07	1.062	.113-.133	12.27	MS9811-34	3.500	2.065-2.125	27.15
MS9811-08	1.125	.113-.133	12.65	MS9811-35	3.625	2.190-2.250	27.91
MS9811-09	1.188	.113-.133	13.03	MS9811-36	3.750	2.315-2.375	28.67
MS9811-10	1.250	.113-.133	13.42	MS9811-37	3.875	2.440-2.500	29.44
MS9811-11	1.312	.113-.133	13.79	MS9811-38	4.000	2.565-2.625	30.20
MS9811-12	1.375	.113-.133	14.17	MS9811-39	4.125	2.690-2.750	30.97
MS9811-13	1.438	.113-.133	14.56	MS9811-40	4.250	2.815-2.875	31.73
MS9811-14	1.500	.113-.133	14.94	MS9811-41	4.375	2.940-3.000	32.49
MS9811-15	1.562	.128-.188	15.32	MS9811-42	4.500	3.065-3.125	33.26
MS9811-16	1.625	.190-.250	15.71	MS9811-43	4.625	3.190-3.250	34.01
MS9811-17	1.688	.252-.312	16.09	MS9811-44	4.750	3.315-3.375	34.78
MS9811-18	1.750	.315-.375	16.46	MS9811-45	4.875	3.440-3.500	35.55
MS9811-19	1.812	.378-.438	16.84	MS9811-46	5.000	3.565-3.625	36.30
MS9811-20	1.875	.440-.500	17.23	MS9811-47	5.125	3.690-3.750	37.07
MS9811-21	1.938	.502-.562	17.61	MS9811-48	5.250	3.815-3.875	37.84
MS9811-22	2.000	.565-.625	17.99	MS9811-49	5.375	3.940-4.000	38.60
MS9811-23	2.125	.690-.750	18.75	MS9811-50	5.500	4.065-4.125	39.36
MS9811-24	2.250	.815-.875	19.52	MS9811-51	5.625	4.190-4.250	40.12
MS9811-25	2.375	.940-1.000	20.28	MS9811-52	5.750	4.315-4.375	40.89
MS9811-26	2.500	1.065-1.125	21.05	MS9811-53	5.875	4.440-4.500	41.65
MS9811-27	2.625	1.190-1.250	21.81	MS9811-54	6.000	4.565-4.625	42.41
MS9811-28	2.750	1.315-1.375	22.57				
MS9811-29	2.875	1.440-1.500	23.34				
MS9811-30	3.000	1.565-1.625	24.09				

- SHANK SHALL BE STRAIGHT WITHIN .002 TOTAL PER INCH OF BOLT LENGTH.
- THE CONCENTRICITY OF THREAD PD IN RELATION TO THE SHANK SHALL BE WITHIN .006 FIR.
- THE CONCENTRICITY OF THE SHANK IN RELATION TO THE WASHER FACE DIAMETER AND HEXAGON SHALL BE WITHIN .026 FIR.
- INCOMPLETE THREADS NOT TO ENTER FILLET.
- MATERIAL: CORROSION RESISTANT STEEL AMS 5643.
- HARDNESS: ROCKWELL C32-38.
- MANUFACTURING SPECIFICATION: AMS 7474.
- FLUORESCENT PENETRANT INSPECTION PER AMS 2645.
- SURFACE TEXTURE: USAS B46.1-1962. UNLESS OTHERWISE SPECIFIED, SURFACES TO BE 125 MICROINCHES EXCEPT UPSET HEAD.
- BREAK SHARP EDGES .003-.015 UNLESS OTHERWISE SPECIFIED.
- DIMENSIONS IN INCHES. UNLESS OTHERWISE SPECIFIED, TOLERANCES: LINEAR DIMENSIONS $\pm .010$, ANGULAR DIMENSIONS $\pm 5^\circ$.
- DO NOT USE UNASSIGNED PART NUMBERS.

REINSTATED 15 AUG 84

AS & AMS ARE SOCIETY OF AUTOMOTIVE ENGINEERS, INC. PUBLICATIONS.
THIS STANDARD WAS DEVELOPED COOPERATIVELY WITH THE MILITARY SERVICES BY THE SAE AEROSPACE PART STANDARDS DIV.

P.A. AS	INTERNATIONAL INTEREST	TITLE	MILITARY STANDARD
Other Cust. AV		BOLT, MACHINE - HEXAGON HEAD,	MS9811
99		PD SHANK, AMS 5643, .5625-18 UNJF-3A	
PROCUREMENT SPECIFICATION NONE	SUPERSEDES:	PAGE 1 OF 1	