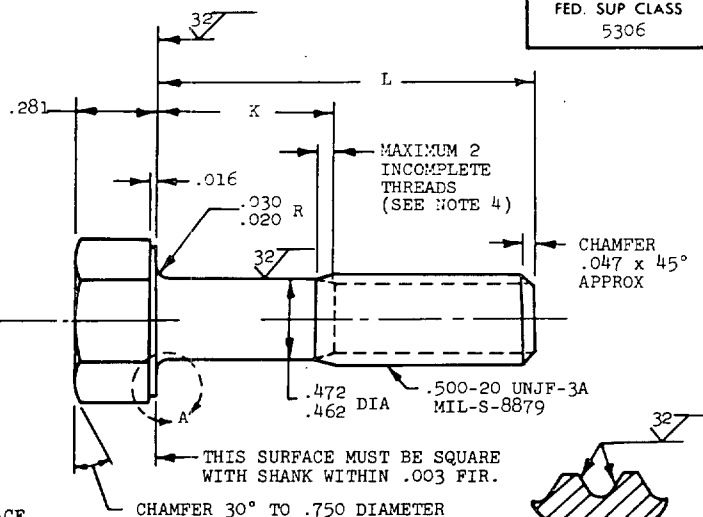
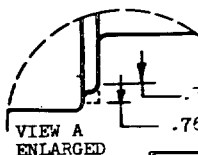
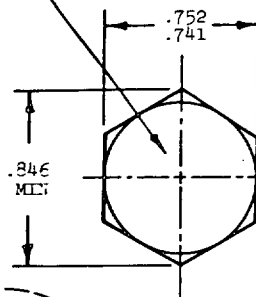


MS9810

MARK PART NUMBER AND
MANUFACTURERS IDENTIFICATION
PER AS 478 CLASS A



SECTION THRU
THREAD PROFILE

| PART NUMBER | L | K | APPROX WEIGHT LB/100 | PART NUMBER | L | K | APPROX WEIGHT LB/100 |
|----------------|-------|-------------|----------------------------|----------------|-------|-------------|----------------------------|
| MS9810-03 | .750 | .105-.125 | 7.44 | MS9810-31 | 3.000 | 1.690-1.750 | 18.27 |
| MS9810-04 | .812 | .105-.125 | 7.74 | MS9810-32 | 3.125 | 1.815-1.875 | 18.87 |
| MS9810-05 | .875 | .105-.125 | 8.04 | MS9810-33 | 3.250 | 1.940-2.000 | 19.47 |
| MS9810-06 | .938 | .105-.125 | 8.34 | MS9810-34 | 3.375 | 2.065-2.125 | 20.08 |
| MS9810-07 | 1.000 | .105-.125 | 8.64 | MS9810-35 | 3.500 | 2.190-2.250 | 20.68 |
| MS9810-08 | 1.062 | .105-.125 | 8.94 | MS9810-36 | 3.625 | 2.315-2.375 | 21.27 |
| MS9810-09 | 1.125 | .105-.125 | 9.24 | MS9810-37 | 3.750 | 2.440-2.500 | 21.88 |
| MS9810-10 | 1.188 | .105-.125 | 9.54 | MS9810-38 | 3.875 | 2.565-2.625 | 22.48 |
| MS9810-11 | 1.250 | .105-.125 | 9.84 | MS9810-39 | 4.000 | 2.690-2.750 | 23.09 |
| MS9810-12 | 1.312 | .105-.125 | 10.15 | MS9810-40 | 4.125 | 2.815-2.875 | 23.68 |
| MS9810-13 | 1.375 | .105-.125 | 10.45 | MS9810-41 | 4.250 | 2.940-3.000 | 24.28 |
| MS9810-14 | 1.438 | .128-.188 | 10.75 | MS9810-42 | 4.375 | 3.065-3.125 | 24.89 |
| MS9810-15 | 1.500 | .190-.250 | 11.05 | MS9810-43 | 4.500 | 3.190-3.250 | 25.49 |
| MS9810-16 | 1.562 | .252-.312 | 11.34 | MS9810-44 | 4.625 | 3.315-3.375 | 26.10 |
| MS9810-17 | 1.625 | .315-.375 | 11.65 | MS9810-45 | 4.750 | 3.440-3.500 | 26.69 |
| MS9810-18 | 1.688 | .378-.438 | 11.95 | MS9810-46 | 4.875 | 3.565-3.625 | 27.30 |
| MS9810-19 | 1.750 | .440-.500 | 12.25 | MS9810-47 | 5.000 | 3.690-3.750 | 27.90 |
| MS9810-20 | 1.812 | .502-.562 | 12.55 | MS9810-48 | 5.125 | 3.815-3.875 | 28.50 |
| MS9810-21 | 1.875 | .565-.625 | 12.85 | MS9810-49 | 5.250 | 3.940-4.000 | 29.10 |
| MS9810-22 | 1.938 | .628-.688 | 13.15 | MS9810-50 | 5.375 | 4.065-4.125 | 29.70 |
| MS9810-23 | 2.000 | .690-.750 | 13.46 | MS9810-51 | 5.500 | 4.190-4.250 | 30.31 |
| MS9810-24 | 2.125 | .815-.875 | 14.05 | MS9810-52 | 5.625 | 4.315-4.375 | 30.91 |
| MS9810-25 | 2.250 | .940-1.000 | 14.66 | MS9810-53 | 5.750 | 4.440-4.500 | 31.51 |
| MS9810-26 | 2.375 | 1.065-1.125 | 15.26 | MS9810-54 | 5.875 | 4.565-4.625 | 32.11 |
| MS9810-27 | 2.500 | 1.190-1.250 | 15.87 | MS9810-55 | 6.000 | 4.690-4.750 | 32.71 |
| MS9810-28 | 2.625 | 1.315-1.375 | 16.46 | | | | |
| MS9810-29 | 2.750 | 1.440-1.500 | 17.06 | | | | |
| MS9810-30 | 2.875 | 1.565-1.625 | 17.69 | | | | |

- SHANK SHALL BE STRAIGHT WITHIN .002 TOTAL PER INCH OF BOLT LENGTH.
- THE CONCENTRICITY OF THREAD PD IN RELATION TO THE SHANK SHALL BE WITHIN .006 FIR.
- THE CONCENTRICITY OF THE SHANK IN RELATION TO THE WASHER FACE DIAMETER AND HEXAGON SHALL BE WITHIN .023 FIR.
- INCOMPLETE THREADS NOT TO ENTER FILLET.
- MATERIAL: CORROSION RESISTANT STEEL AMS 5643.
- HARDNESS: ROCKWELL C32-38.
- MANUFACTURING SPECIFICATION: AMS 7474.
- FLUORESCENT PENETRANT INSPECTION PER AMS 2645.
- SURFACE TEXTURE: USAS B46.1-1962. UNLESS OTHERWISE SPECIFIED, SURFACES TO BE 125 MICRONS EXCEPT UPSET HEAD.
- BREAK SHARP EDGES .003-.015 UNLESS OTHERWISE SPECIFIED.
- DIMENSIONS IN INCHES. UNLESS OTHERWISE SPECIFIED, TOLERANCES: LINEAR DIMENSIONS $\pm .010$, ANGULAR DIMENSIONS $\pm 5^\circ$.
- DO NOT USE UNASSIGNED PART NUMBERS.

REINSTATED 31 OCT 84

AS & AMS ARE SOCIETY OF AUTOMOTIVE ENGINEERS, INC. PUBLICATIONS.
THIS STANDARD WAS DEVELOPED COOPERATIVELY WITH THE MILITARY SERVICES BY THE SAE AEROSPACE PART STANDARDS DIV.

| | | | |
|-----------------------------------|------------------------|--|-------------------|
| P.A. AS | INTERNATIONAL INTEREST | TITLE | MILITARY STANDARD |
| Other Cust AV 99 | (B) | BOLT, MACHINE - HEXAGON HEAD, PD SHANK, AMS 5643, .500-20 UNJF-3A | MS9810 |
| PROCUREMENT SPECIFICATION NONE | SUPERSEDES: | PAGE 1 OF 1 | |

DD FORM 672-1 (Coordinated)

PREVIOUS EDITIONS OF THIS FORM ARE OBSOLETE

5306-0883