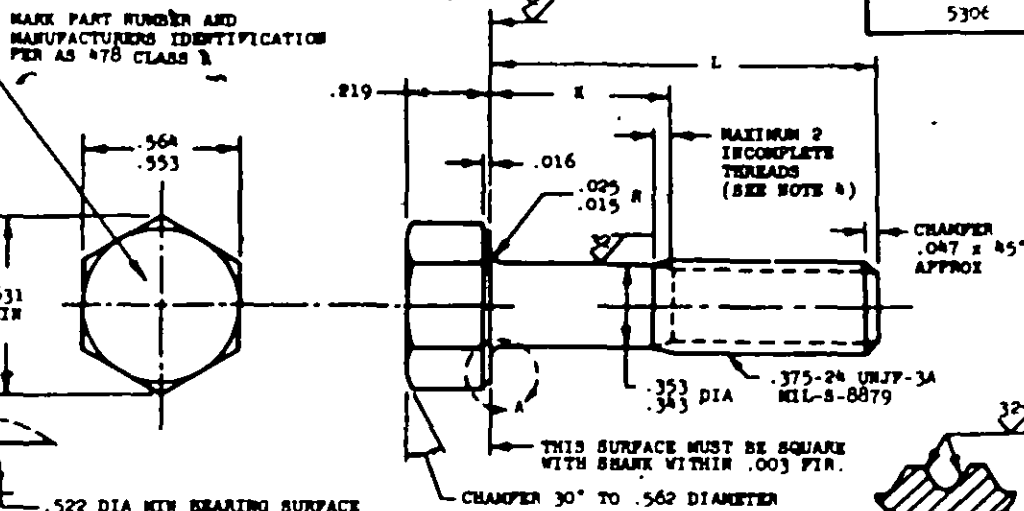
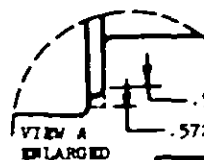


MS9808FED. SUP CLASS
5306VIEW A
ENLARGED
.522 DIA MIN BEARING SURFACE
.572 DIA MAX

PART NUMBER	L	K	APPROX WEIGHT LB/100	PART NUMBER	L	K	APPROX WEIGHT LB/100
MS9808-03	.562	.088-.108	3.17	MS9808-31	2.625	1.565-1.625	8.70
MS9808-04	.625	.088-.108	3.34	MS9808-32	2.750	1.690-1.750	9.03
MS9808-05	.688	.088-.108	3.51	MS9808-33	2.875	1.815-1.875	9.37
MS9808-06	.750	.088-.108	3.68	MS9808-34	3.000	1.940-2.000	9.70
MS9808-07	.812	.088-.108	3.84	MS9808-35	3.125	2.065-2.125	10.04
MS9808-08	.875	.088-.108	4.01	MS9808-36	3.250	2.190-2.250	10.37
MS9808-09	.938	.088-.108	4.18	MS9808-37	3.375	2.315-2.375	10.71
MS9808-10	1.000	.088-.108	4.35	MS9808-38	3.500	2.440-2.500	11.05
MS9808-11	1.062	.088-.108	4.51	MS9808-39	3.625	2.565-2.625	11.37
MS9808-12	1.125	.088-.125	4.68	MS9808-40	3.750	2.690-2.750	11.71
MS9808-13	1.188	.128-.188	4.85	MS9808-41	3.875	2.815-2.875	12.04
MS9808-14	1.250	.190-.250	5.02	MS9808-42	4.000	2.940-3.000	12.38
MS9808-15	1.312	.252-.312	5.19	MS9808-43	4.125	3.065-3.125	12.72
MS9808-16	1.375	.315-.375	5.35	MS9808-44	4.250	3.190-3.250	13.05
MS9808-17	1.438	.378-.438	5.52	MS9808-45	4.375	3.315-3.375	13.39
MS9808-18	1.500	.440-.500	5.69	MS9808-46	4.500	3.440-3.500	13.71
MS9808-19	1.562	.502-.562	5.86	MS9808-47	4.625	3.565-3.625	14.05
MS9808-20	1.625	.565-.625	6.03	MS9808-48	4.750	3.690-3.750	14.39
MS9808-21	1.688	.628-.688	6.19	MS9808-49	4.875	3.815-3.875	14.72
MS9808-22	1.750	.690-.750	6.35	MS9808-50	5.000	3.940-4.000	15.06
MS9808-23	1.812	.752-.812	6.52	MS9808-51	5.125	4.065-4.125	15.39
MS9808-24	1.875	.815-.875	6.69	MS9808-52	5.250	4.190-4.250	15.73
MS9808-25	1.938	.878-.938	6.85	MS9808-53	5.375	4.315-4.375	16.07
MS9808-26	2.000	.940-1.000	7.02	MS9808-54	5.500	4.440-4.500	16.39
MS9808-27	2.125	1.065-1.125	7.36	MS9808-55	5.625	4.565-4.625	16.73
MS9808-28	2.250	1.190-1.250	7.70	MS9808-56	5.750	4.690-4.750	17.06
MS9808-29	2.375	1.315-1.375	8.03	MS9808-57	5.875	4.815-4.875	17.40
MS9808-30	2.500	1.440-1.500	8.37	MS9808-58	6.000	4.940-5.000	17.74

1. SHANK SHALL BE STRAIGHT WITHIN .0025 TOTAL PER INCH OF BOLT LENGTH.
2. THE CONCENTRICITY OF THREAD PD IN RELATION TO THE SHANK SHALL BE WITHIN .006 FIR.
3. THE CONCENTRICITY OF THE SHANK IN RELATION TO THE WASHER FACE DIAMETER AND HEXAGON SHALL BE WITHIN .017 FIR.
4. INCOMPLETE THREADS NOT TO ENTER FILLET.
5. MATERIAL: CORROSION RESISTANT STEEL AMS 5643.
6. HARDNESS: ROCKWELL C32-38.
7. MANUFACTURING SPECIFICATION: AMS 7474.
8. FLUORESCENT PENETRANT INSPECTION PER AMS 2645.
9. SURFACE TEXTURE: USAS B46.1-1962. UNLESS OTHERWISE SPECIFIED, SURFACES TO BE 125 MICROINCHES EXCEPT UPSET HEAD.
10. BREAK SHARP EDGES .003-.015 UNLESS OTHERWISE SPECIFIED.
11. DIMENSIONS IN INCHES. UNLESS OTHERWISE SPECIFIED, TOLERANCES: LINEAR DIMENSIONS ±.010, ANGULAR DIMENSIONS ±5°.
12. DO NOT USE UNASSIGNED PART NUMBERS.

AS 4 AMS ARE SOCIETY OF AUTOMOTIVE ENGINEERS, INC. PUBLICATIONS.
THIS STANDARD WAS DEVELOPED COOPERATIVELY WITH THE MILITARY SERVICES BY THE SAE AEROSPACE PART STANDARDS DIV.

P.A. USAF-II	INTERNATIONAL INTEREST	TITLE	MILITARY STANDARD
Other Code ARMY-IV NAVY-AS	AMCC AIR STD 17/2	BOLT, MACHINE - HEXAGON HEAD, PD SHANK, AMS 5643, .375-24 UNJF-3A	MS9808
PROCUREMENT SPECIFICATION NONE	SUPERSEDES		SHEET 1 OF 1

APPROVED 11 MAR 70 REVISED

This military standard is approved by the Department of Defense and is mandatory on all activities. It is not to be used for all non-engineering and design applications and its application shall be made from the document.