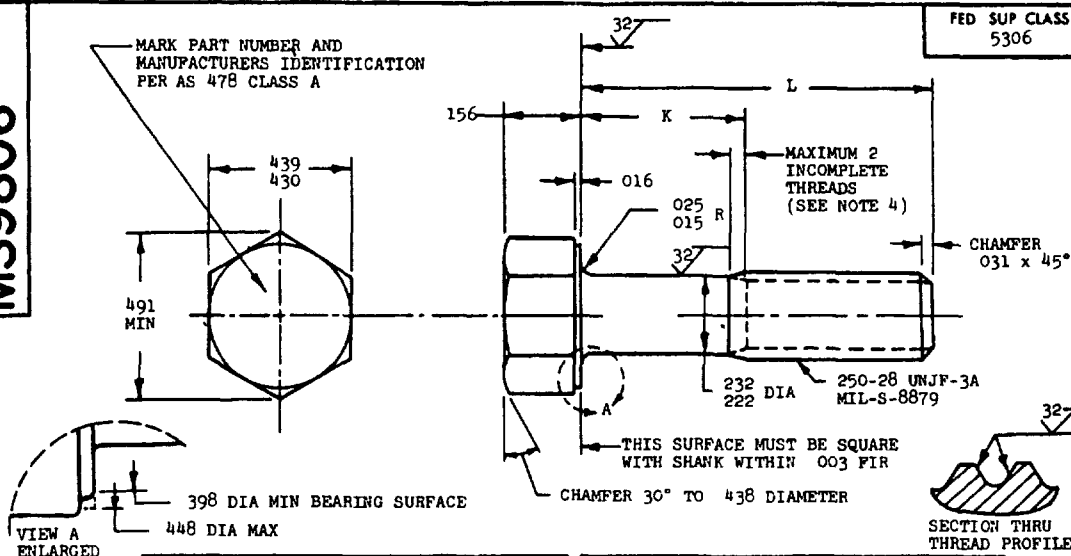


MS9806

PART NUMBER	L	K	APPROX WEIGHT LB/100	PART NUMBER	L	K	APPROX WEIGHT LB/100
MS9806-04	.375	.079-.099	1.16	MS9806-33	2.375	1.565-1.625	3.44
MS9806-05	.438	.079-.099	1.23	MS9806-34	2.500	1.690-1.750	3.58
MS9806-06	.500	.079-.099	1.29	MS9806-35	2.625	1.815-1.875	3.72
MS9806-07	.562	.079-.099	1.36	MS9806-36	2.750	1.940-2.000	3.86
MS9806-08	.625	.079-.099	1.43	MS9806-37	2.875	2.065-2.125	4.00
MS9806-09	.688	.079-.099	1.50	MS9806-38	3.000	2.190-2.250	4.14
MS9806-10	.750	.079-.099	1.57	MS9806-39	3.125	2.315-2.375	4.29
MS9806-11	.812	.079-.099	1.65	MS9806-40	3.250	2.440-2.500	4.43
MS9806-12	.875	.079-.125	1.72	MS9806-41	3.375	2.565-2.625	4.58
MS9806-13	.938	.128-.188	1.79	MS9806-42	3.500	2.690-2.750	4.72
MS9806-14	1.000	.190-.250	1.86	MS9806-43	3.625	2.815-2.875	4.86
MS9806-15	1.062	.252-.312	1.93	MS9806-44	3.750	2.940-3.000	5.01
MS9806-16	1.125	.315-.375	2.00	MS9806-45	3.875	3.065-3.125	5.15
MS9806-17	1.188	.378-.438	2.08	MS9806-46	4.000	3.190-3.250	5.29
MS9806-18	1.250	.440-.500	2.15	MS9806-47	4.125	3.315-3.375	5.44
MS9806-19	1.312	.502-.562	2.22	MS9806-48	4.250	3.440-3.500	5.58
MS9806-20	1.375	.565-.625	2.29	MS9806-49	4.375	3.565-3.625	5.72
MS9806-21	1.438	.628-.688	2.36	MS9806-50	4.500	3.690-3.750	5.87
MS9806-22	1.500	.690-.750	2.43	MS9806-51	4.625	3.815-3.875	6.01
MS9806-23	1.562	.752-.812	2.51	MS9806-52	4.750	3.940-4.000	6.15
MS9806-24	1.625	.815-.875	2.58	MS9806-53	4.875	4.065-4.125	6.29
MS9806-25	1.688	.878-.938	2.65	MS9806-54	5.000	4.190-4.250	6.43
MS9806-26	1.750	.940-1.000	2.72	MS9806-55	5.125	4.315-4.375	6.57
MS9806-27	1.812	1.002-1.062	2.79	MS9806-56	5.250	4.440-4.500	6.72
MS9806-28	1.875	1.065-1.125	2.86	MS9806-57	5.375	4.565-4.625	6.86
MS9806-29	1.938	1.128-1.188	2.93	MS9806-58	5.500	4.690-4.750	7.00
MS9806-30	2.000	1.190-1.250	3.01	MS9806-59	5.625	4.815-4.875	7.15
MS9806-31	2.125	1.315-1.375	3.15	MS9806-60	5.750	4.940-5.000	7.29
MS9806-32	2.250	1.440-1.500	3.29	MS9806-61	5.875	5.065-5.125	7.43
				MS9806-62	6.000	5.190-5.250	7.58

- SHANK SHALL BE STRAIGHT WITHIN .003 TOTAL PER INCH OF BOLT LENGTH
- THE CONCENTRICITY OF THREAD PD IN RELATION TO THE SHANK SHALL BE WITHIN .006 FIR
- THE CONCENTRICITY OF THE SHANK IN RELATION TO THE WASHER FACE DIAMETER AND HEXAGON SHALL BE WITHIN .013 FIR
- INCOMPLETE THREADS NOT TO ENTER FILLET
- MATERIAL CORROSION RESISTANT STEEL AMS 5643
- HARDNESS ROCKWELL C32-38
- MANUFACTURING SPECIFICATION AMS 7474
- FLUORESCENT PENETRANT INSPECTION PER AMS 2645
- SURFACE TEXTURE USAS B46 1-1962 UNLESS OTHERWISE SPECIFIED, SURFACES TO BE 125 MICROINCHES EXCEPT UPSET HEAD
- BREAK SHARP EDGES .003-.015 UNLESS OTHERWISE SPECIFIED
- DIMENSIONS IN INCHES UNLESS OTHERWISE SPECIFIED, TOLERANCES LINEAR DIMENSIONS $\pm .010$, ANGULAR DIMENSIONS $\pm 5^\circ$
- DO NOT USE UNASSIGNED PART NUMBERS

AS & AMS ARE SOCIETY OF AUTOMOTIVE ENGINEERS, INC PUBLICATIONS
THIS STANDARD WAS DEVELOPED COOPERATIVELY WITH THE MILITARY SERVICES BY THE SAE AEROSPACE PART STANDARDS DIV.

P.A. USAF-II	INTERNATIONAL INTEREST	TITLE	MILITARY STANDARD
Other Cust ARMY-AV NAVY-AS	ASCG AIR STD 17-2	BOLT, MACHINE - HEXAGON HEAD, PD SHANK, AMS 5643, 250-28 UNJF-3A	MS9806
PROCUREMENT SPECIFICATION NONE	SUPERSEDES:		SHEET 1 OF 1

DD FORM 672-1 (Coordinated)

PREVIOUS EDITIONS OF THIS FORM ARE OBSOLETE

☆ U. S. GOVERNMENT PRINTING OFFICE: 1970-393-096/5-5207

Review activities USAF-82

This military standard is approved by the Department of Defense and is mandatory on all activities. Subsequent to all engineering and design applications and for repetitive use shall be made from this document.

APPROVED 11 MAR 70 REVISED