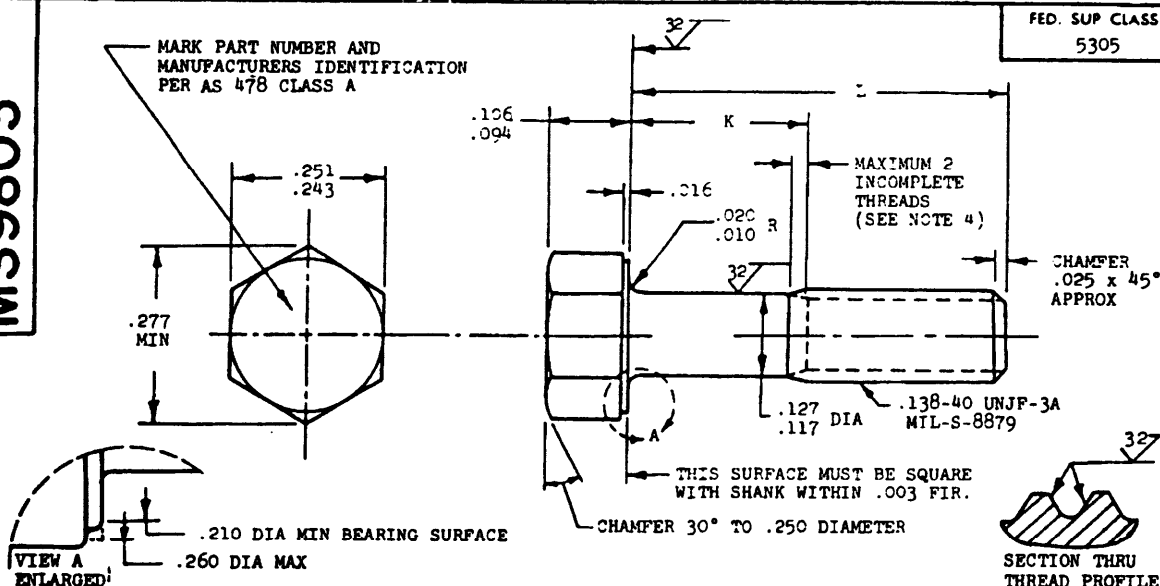


MS9803

| PART NUMBER | L | K | APPROX WEIGHT LB/100 | PART NUMBER | L | K | APPROX WEIGHT LB/100 |
|-------------|-------|-------------|----------------------|-------------|-------|-------------|----------------------|
| MS9803-02 | .250 | .058-.078 | .25 | MS9803-26 | 1.750 | 1.164-1.224 | .81 |
| MS9803-03 | .312 | .058-.078 | .27 | MS9803-27 | 1.812 | 1.226-1.286 | .83 |
| MS9803-04 | .375 | .058-.078 | .30 | MS9803-28 | 1.875 | 1.289-1.349 | .86 |
| MS9803-05 | .438 | .058-.078 | .32 | MS9803-29 | 1.938 | 1.352-1.412 | .88 |
| MS9803-06 | .500 | .058-.078 | .34 | MS9803-30 | 2.000 | 1.414-1.474 | .91 |
| MS9803-07 | .562 | .058-.078 | .37 | | | | |
| MS9803-08 | .625 | .058-.099 | .39 | | | | |
| MS9803-09 | .688 | .102-.162 | .42 | | | | |
| MS9803-10 | .750 | .164-.224 | .44 | | | | |
| MS9803-11 | .812 | .226-.286 | .46 | | | | |
| MS9803-12 | .875 | .289-.349 | .49 | | | | |
| MS9803-13 | .938 | .352-.412 | .51 | | | | |
| MS9803-14 | 1.000 | .414-.474 | .53 | | | | |
| MS9803-15 | 1.062 | .476-.536 | .56 | | | | |
| MS9803-16 | 1.125 | .539-.599 | .58 | | | | |
| MS9803-17 | 1.188 | .602-.662 | .61 | | | | |
| MS9803-18 | 1.250 | .664-.724 | .63 | | | | |
| MS9803-19 | 1.312 | .726-.786 | .65 | | | | |
| MS9803-20 | 1.375 | .789-.849 | .68 | | | | |
| MS9803-21 | 1.438 | .852-.912 | .70 | | | | |
| MS9803-22 | 1.500 | .914-.974 | .72 | | | | |
| MS9803-23 | 1.562 | .976-1.036 | .74 | | | | |
| MS9803-24 | 1.625 | 1.039-1.099 | .76 | | | | |
| MS9803-25 | 1.688 | 1.102-1.162 | .79 | | | | |

- SHANK SHALL BE STRAIGHT WITHIN .003 TOTAL PER INCH OF SCREW LENGTH.
- THE CONCENTRICITY OF THREAD PD IN RELATION TO THE SHANK SHALL BE WITHIN .006 FIR.
- THE CONCENTRICITY OF THE SHANK IN RELATION TO THE WASHER FACE DIAMETER AND HEXAGON SHALL BE WITHIN .009 FIR.
- INCOMPLETE THREADS NOT TO ENTER PILLET.
- MATERIAL: CORROSION RESISTANT STEEL AMS 5643.
- HARDNESS: ROCKWELL C32-38.
- MANUFACTURING SPECIFICATION: AMS 7474.
- FLUORESCENT PENETRANT INSPECTION PER AMS 2645.
- SURFACE TEXTURE: USAS B46.1-1962. UNLESS OTHERWISE SPECIFIED, SURFACES TO BE 125 MICROINCHES EXCEPT UPSET HEAD.
- BREAK SHARP EDGES .003-.015 UNLESS OTHERWISE SPECIFIED.
- DIMENSIONS IN INCHES. UNLESS OTHERWISE SPECIFIED, TOLERANCES: LINEAR DIMENSIONS $\pm .010$, ANGULAR DIMENSIONS $\pm 5^\circ$.
- DO NOT USE UNASSIGNED PART NUMBERS.

REINSTATED 31 OCT 84

AS & AMS ARE SOCIETY OF AUTOMOTIVE ENGINEERS, INC. PUBLICATIONS.
THIS STANDARD WAS DEVELOPED COOPERATIVELY WITH THE MILITARY SERVICES BY THE SAE AEROSPACE PART STANDARDS DIV.

| P.A. AS | INTERNATIONAL INTEREST | TITLE | MILITARY STANDARD |
|-----------------------------------|------------------------|---|-------------------|
| Other Cust AV 99 | (B) | SCREW, MACHINE - HEXAGON HEAD, PD SHANK, AMS 5643, .138-40 UNJF-3A | MS9803 |
| PROCUREMENT SPECIFICATION NONE | SUPERSEDES: | PAGE 1 OF 1 | |

This military standard is approved for use by all Departments and Agencies of the Department of Defense. Selection for all new engineering and design applications and for repetitive use shall be made from this document when applicable.

Review activities:
AIR FORCE - 82
DLA - 15