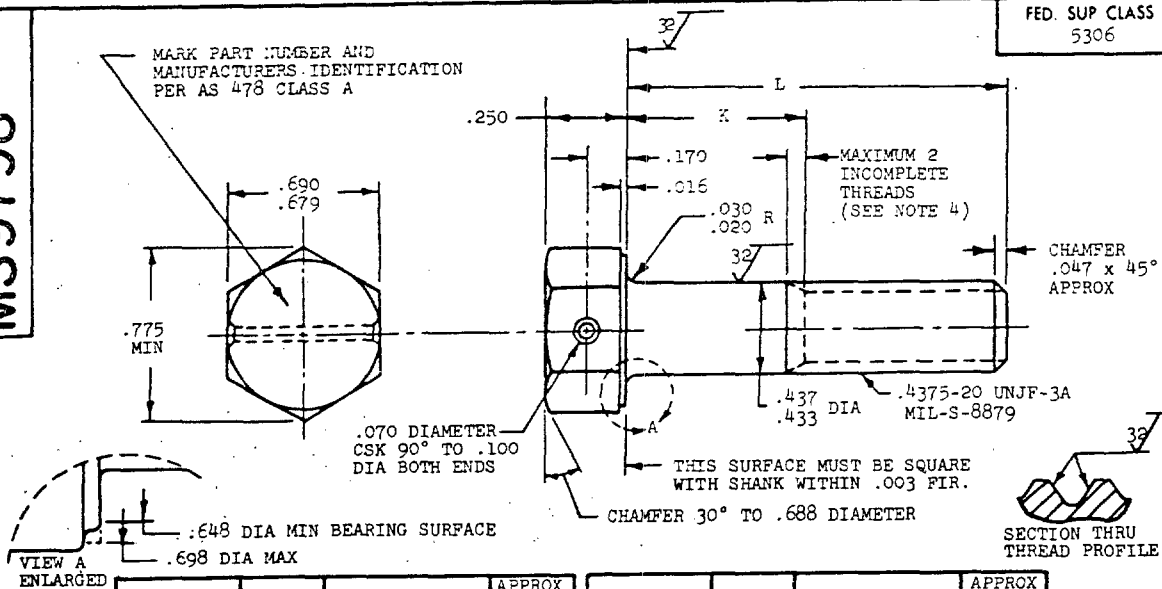


MS9798FED. SUP CLASS
5306

PART NUMBER	L	K	APPROX WEIGHT LB/100	PART NUMBER	L	K	APPROX WEIGHT LB/100
MS9798-14	1.312	.128-.188	8.19	MS9798-36	3.375	2.190-2.250	16.84
MS9798-15	1.375	.190-.250	8.46	MS9798-37	3.500	2.315-2.375	17.36
MS9798-16	1.438	.252-.312	8.73	MS9798-38	3.625	2.440-2.500	17.89
MS9798-17	1.500	.315-.375	8.98	MS9798-39	3.750	2.565-2.625	18.41
MS9798-18	1.562	.378-.438	9.24	MS9798-40	3.875	2.690-2.750	18.94
MS9798-19	1.625	.440-.500	9.51	MS9798-41	4.000	2.815-2.875	19.46
MS9798-20	1.688	.502-.562	9.77	MS9798-42	4.125	2.940-3.000	19.99
MS9798-21	1.750	.565-.625	10.03	MS9798-43	4.250	3.065-3.125	20.52
MS9798-22	1.812	.628-.688	10.29	MS9798-44	4.375	3.190-3.250	21.03
MS9798-23	1.875	.690-.750	10.56	MS9798-45	4.500	3.315-3.375	21.55
MS9798-24	1.938	.752-.812	10.82	MS9798-46	4.625	3.440-3.500	22.08
MS9798-25	2.000	.815-.875	11.08	MS9798-47	4.750	3.565-3.625	22.60
MS9798-26	2.125	.940-1.000	11.61	MS9798-48	4.875	3.690-3.750	23.13
MS9798-27	2.250	1.065-1.125	12.14	MS9798-49	5.000	3.815-3.875	23.64
MS9798-28	2.375	1.190-1.250	12.65	MS9798-50	5.125	3.940-4.000	24.18
MS9798-29	2.500	1.315-1.375	13.17	MS9798-51	5.250	4.065-4.125	24.70
MS9798-30	2.625	1.440-1.500	13.70	MS9798-52	5.375	4.190-4.250	25.22
MS9798-31	2.750	1.565-1.625	14.22	MS9798-53	5.500	4.315-4.375	25.74
MS9798-32	2.875	1.690-1.750	14.74	MS9798-54	5.625	4.440-4.500	26.27
MS9798-33	3.000	1.815-1.875	15.27	MS9798-55	5.750	4.565-4.625	26.99
MS9798-34	3.125	1.940-2.000	15.80	MS9798-56	5.875	4.690-4.750	27.32
MS9798-35	3.250	2.065-2.215	16.32	MS9798-57	6.000	4.815-4.875	27.84

- SHANK SHALL BE STRAIGHT WITHIN .0025 TOTAL PER INCH OF BOLT LENGTH.
- THE CONCENTRICITY OF THREAD PD IN RELATION TO THE SHANK SHALL BE WITHIN .006 FIR.
- THE CONCENTRICITY OF THE SHANK IN RELATION TO THE WASHER FACE DIAMETER AND HEXAGON SHALL BE WITHIN .019 FIR.
- INCOMPLETE THREADS NOT TO ENTER FILLET.
- MATERIAL: CORROSION RESISTANT STEEL AMS 5643.
- HARDNESS: ROCKWELL C32-38.
- MANUFACTURING SPECIFICATION: AMS 7474.
- FLUORESCENT PENETRANT INSPECTION PER AMS 2645.
- SURFACE TEXTURE: USAS B46.1-1962. UNLESS OTHERWISE SPECIFIED, SURFACES TO BE 125 MICROINCHES EXCEPT UPSET HEAD.
- BREAK SHARP EDGES .003-.015 UNLESS OTHERWISE SPECIFIED.
- DIMENSIONS IN INCHES. UNLESS OTHERWISE SPECIFIED, TOLERANCES: LINEAR DIMENSIONS $\pm .010$, ANGULAR DIMENSIONS $\pm 5^\circ$.
- DO NOT USE UNASSIGNED PART NUMBERS.

② REINSTATED 31 OCT 84

AS & AMS ARE SOCIETY OF AUTOMOTIVE ENGINEERS, INC. PUBLICATIONS.
THIS STANDARD WAS DEVELOPED COOPERATIVELY WITH THE MILITARY SERVICES BY THE SAE AEROSPACE PART STANDARDS DIV.

P.A.	AS	INTERNATIONAL INTEREST	TITLE	MILITARY STANDARD
Other Cust	AV		BOLT, MACHINE - HEXAGON HEAD, DRILLED, 1 HOLE,	
②	99	②	FULL SHANK, AMS 5643, .4375-20 UNJF-3A	MS9798
PROCUREMENT SPECIFICATION NONE			SUPERSEDES:	PAGE 1 OF 1

DD FORM 672-1

PREVIOUS EDITIONS OF THIS FORM ARE OBSOLETE

5306-0879

Review activities:
AIR FORCE-82
DLA-15

②

This military standard is approved for use by all Departments and Agencies of the Department of Defense. Selection for all new engineering and design applications and for repetitive use shall be made from this document when applicable.

APPROVED 11 MAR 70 REVISED 21 DEC 83 ② 31 OCT 84