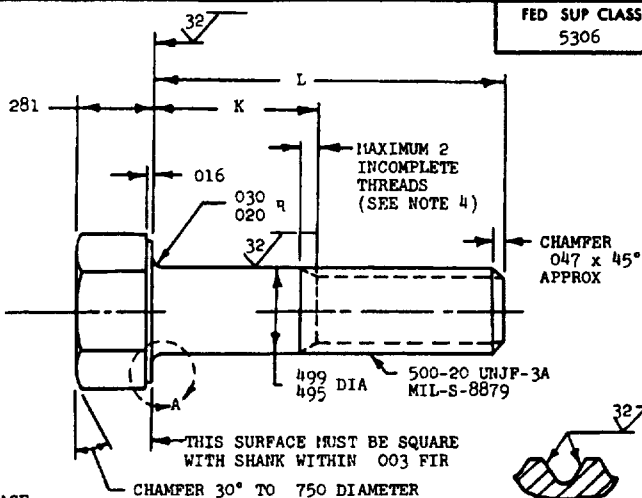
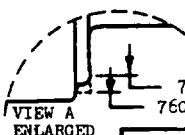
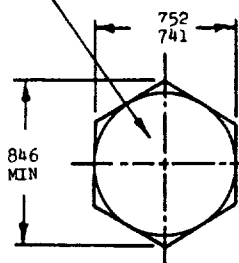


MS9788

MARK PART NUMBER AND
MANUFACTURER'S IDENTIFICATION
PER AS 478 CLASS A



SECTION THRU
THREAD PROFILE

PART NUMBER	L	Y	APPROX WEIGHT LB/100	PART NUMBER	L	K	APPROX WEIGHT LB/100
MS9788-14	1 438	128- 198	11 69	MS9788-31	3 000	1 690-1 750	20 23
MS9788-15	1 500	190- 250	12 03	MS9788-32	3 125	1 815-1 875	20 92
MS9788-16	1 562	252- 312	12 36	MS9788-33	3 250	1 940-2 000	21 60
MS9788-17	1 625	315- 375	12 71	MS9788-34	3 375	2 065-2 125	22 28
MS9788-18	1 688	378- 438	13 05	MS9788-35	3 500	2 190-2 250	22 97
MS9788-19	1 750	440- 500	13 40	MS9788-36	3 625	2 315-2 375	23 65
MS9788-20	1 812	502- 562	13 74	MS9788-37	3 750	2 440-2 500	24 33
MS9788-21	1 875	565- 625	14 08	MS9788-38	3 875	2 565-2 625	25 02
MS9788-22	1 938	628- 688	14 42	MS9788-39	4 000	2 690-2 750	25 71
MS9788-23	2 000	690- 750	14 76	MS9788-40	4 125	2 815-2 875	26 39
MS9788-24	2 125	815- 875	15 45	MS9788-41	4 250	2 940-3 000	27 08
MS9788-25	2 250	940-1 000	16 13	MS9788-42	4 375	3 065-3 125	27 77
MS9788-26	2 375	1 065-1 125	16 81	MS9788-43	4 500	3 190-3 250	28 45
MS9788-27	2 500	1 190-1 250	17 50	MS9788-44	4 625	3 315-3 375	29 13
MS9788-28	2 625	1 315-1 375	18 18	MS9788-45	4 750	3 440-3 500	29 81
MS9788-29	2 750	1 440-1 500	18 86	MS9788-46	4 875	3 565-3 625	30 49
MS9788-30	2 875	1 565-1 625	19 55	MS9788-47	5 000	3 690-3 750	31 18
				MS9788-48	5 125	3 815-3 875	31 86
				MS9788-49	5 250	3 940-4 000	32 54
				MS9788-50	5 375	4 065-4 125	33 23
				MS9788-51	5 500	4 190-4 250	33 91
				MS9788-52	5 625	4 315-4 375	34 60
				MS9788-53	5 750	4 440-4 500	35 28
				MS9788-54	5 875	4 565-4 625	35 96
				MS9788-55	6 000	4 690-4 750	36 65

1. SHANK SHALL BE STRAIGHT WITHIN .002 TOTAL PER INCH OF BOLT LENGTH
2. THE CONCENTRICITY OF THREAD PD IN RELATION TO THE SHANK SHALL BE WITHIN .006 FIR
3. THE CONCENTRICITY OF THE SHANK IN RELATION TO THE WASHER FACE DIAMETER AND HEXAGON SHALL BE WITHIN .023 FIR
4. INCOMPLETE THREADS NOT TO ENTER FILLET
5. MATERIAL: CORROSION RESISTANT STEEL AMS 5643
6. HARDNESS: ROCKWELL C32-38
7. MANUFACTURING SPECIFICATION AMS 7474
8. FLUORESCENT PENETRANT INSPECTION PER AMS 2645
9. SURFACE TEXTURE: USAS B46 1-1962 UNLESS OTHERWISE SPECIFIED, SURFACES TO BE 125 MICROINCHES EXCEPT UPSET HEAD
10. BREAK SHARP EDGES .003-.015 UNLESS OTHERWISE SPECIFIED
11. DIMENSIONS IN INCHES UNLESS OTHERWISE SPECIFIED, TOLERANCES LINEAR DIMENSIONS $\pm .010$, ANGULAR DIMENSIONS $\pm 5^\circ$
12. DO NOT USE UNASSIGNED PART NUMBERS

AS & AMS ARE SOCIETY OF AUTOMOTIVE ENGINEERS, INC PUBLICATIONS
THIS STANDARD WAS DEVELOPED COOPERATIVELY WITH THE MILITARY SERVICES BY THE SAE AEROSPACE PART STANDARDS DIV

P.A. USAF-II	INTERNATIONAL INTEREST	TITLE	MILITARY STANDARD
Other Cust Army-AV Navy-AS	ASCC AIR STD 17/2	BOLT, MACHINE - HEXAGON HEAD, FULL SHANK, AMS 5643, 500-20 UNJF-3A	MS9788
PROCUREMENT SPECIFICATION NONE	SUPERSEDES:	SHEET 1 OF 1	

DD FORM 672-1 (Coordinated)

PREVIOUS EDITIONS OF THIS FORM ARE OBSOLETE

Review activities USAF - 82

This military standard is approved by the Department of Defense and is mandatory on all activities. Selection for all new engineering and design applications and for repetitive use shall be made from this document.

REVIEWED 11 MAR 70 APPROVED