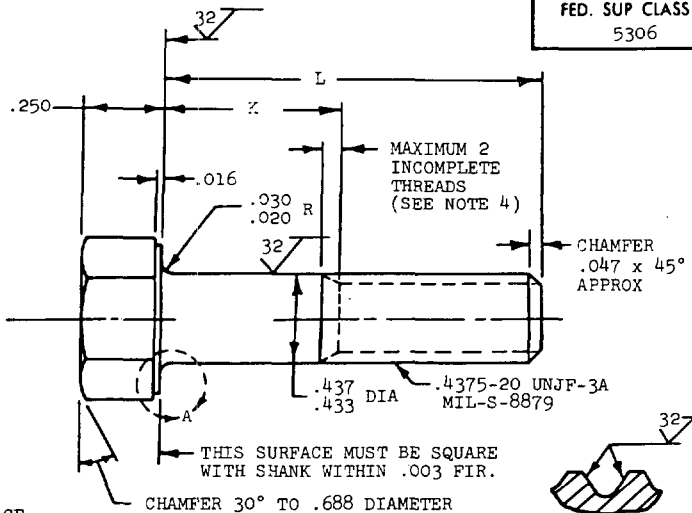
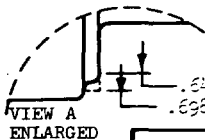
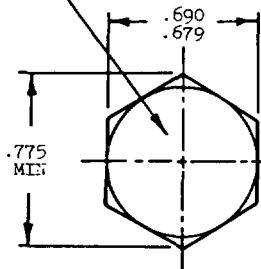


MS9787

MARK PART NUMBER AND
MANUFACTURERS IDENTIFICATION
PER AS 478 CLASS A



FED. SUP CLASS
5306

SECTION THRU
THREAD PROFILE

PART NUMBER	L	K	APPROX WEIGHT LB/100	PART NUMBER	L	K	APPROX WEIGHT LB/100
MS9787-14	1.312	.128-.188	8.27	MS9787-31	2.750	1.565-1.625	14.30
MS9787-15	1.375	.190-.250	8.54	MS9787-32	2.875	1.690-1.750	14.83
MS9787-16	1.438	.252-.312	8.80	MS9787-33	3.000	1.815-1.875	15.35
MS9787-17	1.500	.315-.375	9.06	MS9787-34	3.125	1.940-2.000	15.87
MS9787-18	1.562	.378-.438	9.32	MS9787-35	3.250	2.065-2.125	16.40
MS9787-19	1.625	.440-.500	9.58	MS9787-36	3.375	2.190-2.250	16.92
MS9787-20	1.688	.502-.562	9.85	MS9787-37	3.500	2.315-2.375	17.44
MS9787-21	1.750	.565-.625	10.11	MS9787-38	3.625	2.440-2.500	17.96
MS9787-22	1.812	.628-.688	10.38	MS9787-39	3.750	2.565-2.625	18.49
MS9787-23	1.875	.690-.750	10.64	MS9787-40	3.875	2.690-2.750	19.02
MS9787-24	1.938	.752-.812	10.90	MS9787-41	4.000	2.815-2.875	19.54
MS9787-25	2.000	.815-.875	11.16	MS9787-42	4.125	2.940-3.000	20.07
MS9787-26	2.125	.940-1.000	11.68	MS9787-43	4.250	3.065-3.125	20.59
MS9787-27	2.250	1.065-1.125	12.21	MS9787-44	4.375	3.190-3.250	21.11
MS9787-28	2.375	1.190-1.250	12.73	MS9787-45	4.500	3.315-3.375	21.63
MS9787-29	2.500	1.315-1.375	13.25	MS9787-46	4.625	3.440-3.500	22.16
MS9787-30	2.625	1.440-1.500	13.77	MS9787-47	4.750	3.565-3.625	22.68
				MS9787-48	4.875	3.690-3.750	23.21
				MS9787-49	5.000	3.815-3.875	23.73
				MS9787-50	5.125	3.940-4.000	24.26
				MS9787-51	5.250	4.065-4.125	24.78
				MS9787-52	5.375	4.190-4.250	25.30
				MS9787-53	5.500	4.315-4.375	25.82
				MS9787-54	5.625	4.440-4.500	26.35
				MS9787-55	5.750	4.565-4.625	26.87
				MS9787-56	5.875	4.690-4.750	27.40
				MS9787-57	6.000	4.815-4.875	27.92

- SHANK SHALL BE STRAIGHT WITHIN .0025 TOTAL PER INCH OF BOLT LENGTH.
- THE CONCENTRICITY OF THREAD PD IN RELATION TO THE SHANK SHALL BE WITHIN .006 FIR.
- THE CONCENTRICITY OF THE SHANK IN RELATION TO THE WASHER FACE DIAMETER AND HEXAGON SHALL BE WITHIN .019 FIR.
- INCOMPLETE THREADS NOT TO ENTER FILLET.
- MATERIAL: CORROSION RESISTANT STEEL AMS 5643.
- HARDNESS: ROCKWELL C32-38.
- MANUFACTURING SPECIFICATION: AMS 7474.
- FLUORESCENT PENETRANT INSPECTION PER AMS 2645.
- SURFACE TEXTURE: USAS B46.1-1962. UNLESS OTHERWISE SPECIFIED, SURFACES TO BE 125 MICROINCHES EXCEPT UPSET HEAD.
- BREAK SHARP EDGES .003-.015 UNLESS OTHERWISE SPECIFIED.
- DIMENSIONS IN INCHES. UNLESS OTHERWISE SPECIFIED, TOLERANCES: LINEAR DIMENSIONS $\pm .010$, ANGULAR DIMENSIONS $\pm 5^\circ$.
- DO NOT USE UNASSIGNED PART NUMBERS.

REINSTATED 31 OCT 84

AS & AMS ARE SOCIETY OF AUTOMOTIVE ENGINEERS, INC. PUBLICATIONS.
THIS STANDARD WAS DEVELOPED COOPERATIVELY WITH THE MILITARY SERVICES BY THE SAE AEROSPACE PART STANDARDS DIV.

P.A. AS	INTERNATIONAL INTEREST	TITLE	MILITARY STANDARD
Other Cust AV 99	(B)	BOLT, MACHINE - HEXAGON HEAD, FULL SHANK, AMS 5643, .4375-20 UNJF-3A	MS9787
PROCUREMENT SPECIFICATION NONE	SUPERSEDES:	PAGE 1 OF 1	

DD FORM 1 SEP 87 672-1 (Coordinated)

PREVIOUS EDITIONS OF THIS FORM ARE OBSOLETE

5306-0874

APPROVED 11 MAR 70 REVISED 21 DEC 83 31 OCT 84

Review activities:
AIR FORCE - 82
DLA - IS

This military standard is approved for use by all Departments and Agencies of the Department of Defense. Selection for all new engineering and design applications and for repetitive use shall be made from this document when desirable.