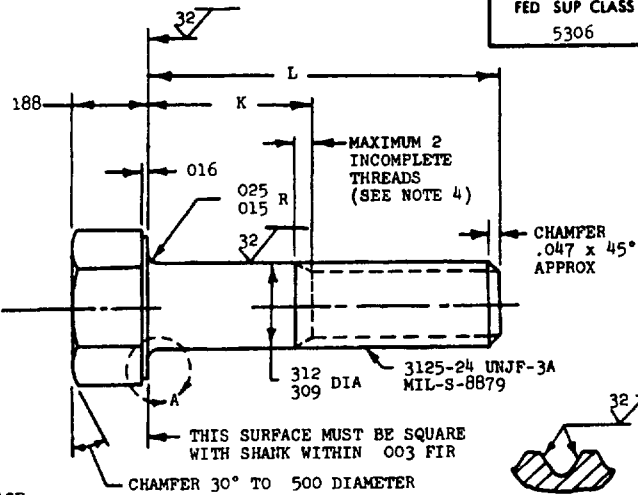
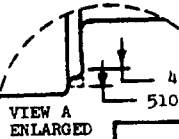
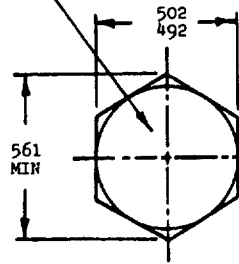


**MS9785**

MARK PART NUMBER AND  
MANUFACTURERS IDENTIFICATION  
PER AS 478 CLASS A



FED SUP CLASS  
5306

PART NUMBER	L	K	APPROX WEIGHT LB/100	PART NUMBER	L	K	APPROX WEIGHT LB/100
MS9785-13	1 062	128- 188	3 35	MS9785-31	2 375	1 440-1 500	6 15
MS9785-14	1 125	190- 250	3 49	MS9785-32	2 500	1 565-1 625	6 42
MS9785-15	1 188	252- 312	3 62	MS9785-33	2 625	1 690-1 750	6 69
MS9785-16	1 250	315- 375	3 76	MS9785-34	2 750	1 815-1 875	6 96
MS9785-17	1 312	378- 438	3 88	MS9785-35	2 875	1 940-2 000	7 23
MS9785-18	1 375	440- 500	4 02	MS9785-36	3 000	2 065-2 125	7 49
MS9785-19	1 438	502- 562	4 15	MS9785-37	3 125	2 190-2 250	7 76
MS9785-20	1 500	565- 625	4 29	MS9785-38	3 250	2 315-2 375	8 03
MS9785-21	1 562	628- 688	4 42	MS9785-39	3 375	2 440-2 500	8 29
MS9785-22	1 625	690- 750	4 56	MS9785-40	3 500	2 565-2 625	8 56
MS9785-23	1 688	752- 812	4 69	MS9785-41	3 625	2 690-2 750	8 82
MS9785-24	1 750	815- 875	4 82	MS9785-42	3 750	2 815-2 875	9 09
MS9785-25	1 812	878- 938	4 96	MS9785-43	3 875	2 940-3 000	9 36
MS9785-26	1 875	940-1 000	5 09	MS9785-44	4 000	3 065-3 125	9 62
MS9785-27	1 938	1 002-1 062	5 22	MS9785-45	4 125	3 190-3 250	9 89
MS9785-28	2 000	1 065-1 125	5 35	MS9785-46	4 250	3 315-3 375	10 16
MS9785-29	2 125	1 190-1 250	5 62	MS9785-47	4 375	3 440-3 500	10 42
MS9785-30	2 250	1 315-1 375	5 89	MS9785-48	4 500	3 565-3 625	10 69
				MS9785-49	4 625	3 690-3 750	10 95
				MS9785-50	4 750	3 815-3 875	11 23
				MS9785-51	4 875	3 940-4 000	11 50
				MS9785-52	5 000	4 065-4 125	11 76
				MS9785-53	5 125	4 190-4 250	12 03
				MS9785-54	5 250	4 315-4 375	12 30
				MS9785-55	5 375	4 440-4 500	12 56
				MS9785-56	5 500	4 565-4 625	12 83
				MS9785-57	5 625	4 690-4 750	13 09
				MS9785-58	5 750	4 815-4 875	13 36
				MS9785-59	5 875	4 940-5 000	13 63
				MS9785-60	6 000	5 065-5 125	13 89

- 1 SHANK SHALL BE STRAIGHT WITHIN .003 TOTAL PER INCH OF BOLT LENGTH
- 2 THE CONCENTRICITY OF THREAD PD IN RELATION TO THE SHANK SHALL BE WITHIN .006 FIR
- 3 THE CONCENTRICITY OF THE SHANK IN RELATION TO THE WASPE<sup>®</sup> FACE DIAMETER AND HEXAGON SHALL BE WITHIN .015 FIR
- 4 INCOMPLETE THREADS NOT TO ENTER FILLET
- 5 MATERIAL CORROSION RESISTANT STEEL AMS 5643
- 6 HARDNESS: ROCKWELL C32-38
- 7 MANUFACTURING SPECIFICATION AMS 7474
- 8 FLUORESCENT PENETRANT INSPECTION PER AMS 2645
- 9 SURFACE TEXTURE USAS B46 1-1962 UNLESS OTHERWISE SPECIFIED, SURFACES TO BE 125 MICROINCHES EXCEPT UPSET HEAD
- 10 BREAK SHARP EDGES .003- .015 UNLESS OTHERWISE SPECIFIED
- 11 DIMENSIONS IN INCHES UNLESS OTHERWISE SPECIFIED, TOLERANCES LINEAR DIMENSIONS  $\pm .010$ , ANGULAR DIMENSIONS  $\pm 5^\circ$
- 12 DO NOT USE UNASSIGNED PART NUMBERS

AS & AMS ARE SOCIETY OF AUTOMOTIVE ENGINEERS, INC PUBLICATIONS  
THIS STANDARD WAS DEVELOPED COOPERATIVELY WITH THE MILITARY SERVICES BY THE SAE AEROSPACE PART STANDARDS DIV

P.A. USAF - (I)	INTERNATIONAL INTEREST	TITLE	MILITARY STANDARD
Other Cust ARMY - AV NAVY - AS	ASCC AIR STD 17/2	BOLT, MACHINE - HEXAGON HEAD, FULL SHANK, AMS 5643, 3125-24 UNJF-3A	<b>MS9785</b>
PROCUREMENT SPECIFICATION NONE	SUPERSEDES		SHEET 1 OF 1

DD FORM 672-1 (Coordinated)

PREVIOUS EDITIONS OF THIS FORM ARE OBSOLETE

Review activities USAF - 82

This military standard is approved by the Department of Defense and is mandatory on all military activities. Selection for all new engineering and design applications and for repetitive use shall be made from this document.

APPROVED 11 MAR 70 REVISED