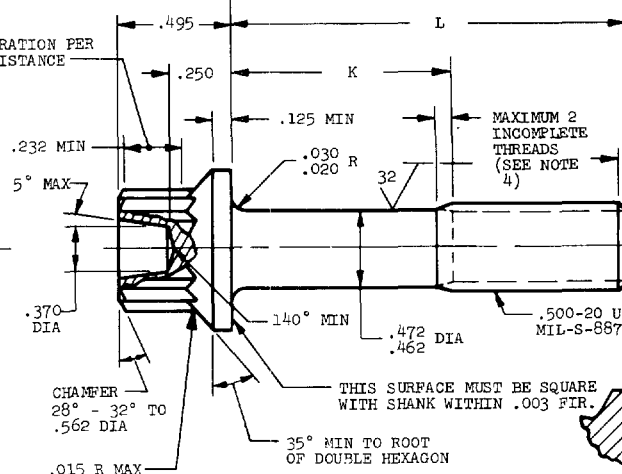
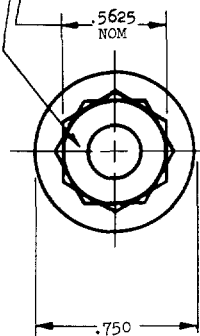


MS9755 (ASG)

MARK PART NO. AND MANUFACTURER'S IDENTIFICATION PER AS 478 CLASS A

WRENCHING CONFIGURATION PER AS 870 FOR THIS DISTANCE

FED SUP CLASS
5306SECTION THRU
THREAD PROFILE

Review activities: USAP-82, 85

This military standard is approved by the Department of the Air Force and the Naval Air Systems Command and is mandatory for use by these activities. All other military activities are required to employ this standard where suitable.

PART NO.	L	K	APPROX WEIGHT LB/100	PART NO.	L	K	APPROX WEIGHT LB/100	PART NO.	L	K	APPROX WEIGHT LB/100
MS9755-04	.812	.105-.125	4.52	MS9755-22	2.000	.690-.750	7.73	MS9755-40	4.250	2.940-3.000	13.81
MS9755-05	.875	.105-.125	4.69	MS9755-23	2.125	.815-.875	8.07	MS9755-41	4.375	3.065-3.125	14.15
MS9755-06	.938	.105-.125	4.86	MS9755-24	2.250	.940-1.000	8.41	MS9755-42	4.500	3.190-3.250	14.49
MS9755-07	1.000	.105-.125	5.03	MS9755-25	2.375	1.065-1.125	8.74	MS9755-43	4.625	3.315-3.375	14.83
MS9755-08	1.062	.105-.125	5.20	MS9755-26	2.500	1.190-1.250	9.08	MS9755-44	4.750	3.440-3.500	15.17
MS9755-09	1.125	.102-.125	5.36	MS9755-27	2.625	1.315-1.375	9.42	MS9755-45	4.875	3.565-3.625	15.50
MS9755-10	1.188	.105-.125	5.53	MS9755-28	2.750	1.440-1.500	9.76	MS9755-46	5.000	3.690-3.750	15.84
MS9755-11	1.250	.102-.125	5.70	MS9755-29	2.875	1.565-1.625	10.10	MS9755-47	5.125	3.815-3.875	16.18
MS9755-12	1.312	.105-.125	5.87	MS9755-30	3.000	1.690-1.750	10.43	MS9755-48	5.250	3.940-4.000	16.52
MS9755-13	1.375	.105-.125	6.04	MS9755-31	3.125	1.815-1.875	10.77	MS9755-49	5.375	4.065-4.125	16.86
MS9755-14	1.438	.128-.188	6.21	MS9755-32	3.250	1.940-2.000	11.11	MS9755-50	5.500	4.190-4.250	17.19
MS9755-15	1.500	.190-.250	6.38	MS9755-33	3.375	2.065-2.125	11.45	MS9755-51	5.625	4.315-4.375	17.53
MS9755-16	1.562	.252-.312	6.55	MS9755-34	3.500	2.190-2.250	11.79	MS9755-52	5.750	4.440-4.500	17.87
MS9755-17	1.625	.315-.375	6.72	MS9755-35	3.625	2.315-2.375	12.12	MS9755-53	5.875	4.565-4.625	18.21
MS9755-18	1.688	.378-.438	6.88	MS9755-36	3.750	2.440-2.500	12.46	MS9755-54	6.000	4.690-4.750	18.55
MS9755-19	1.750	.440-.500	7.05	MS9755-37	3.875	2.565-2.625	12.80				
MS9755-20	1.812	.502-.562	7.22	MS9755-38	4.000	2.690-2.750	13.14				
MS9755-21	1.875	.565-.625	7.39	MS9755-39	4.125	2.815-2.875	13.48				

- SHANK SHALL BE STRAIGHT WITHIN .002 PER INCH OF BOLT LENGTH.
- THE RUNOUT OF THREAD PD IN RELATION TO THE SHANK SHALL BE WITHIN .006 FIR.
- THE RUNOUT OF THE SHANK IN RELATION TO THE WASHER FACE DIAMETER AND DOUBLE HEXAGON OD SHALL BE WITHIN .012 FIR.
- INCOMPLETE THREADS NOT TO ENTER FILLET.
- MATERIAL: TITANIUM AMS 4967.
- HARDNESS: ROCKWELL C36-42.
- MANUFACTURING SPECIFICATION: AMS 7461, EXCEPT MATERIAL AS NOTED.
- FLUORESCENT PENETRANT INSPECTION PER AMS 2645.
- SURFACE TEXTURE: USAS B46.1-1962. UNLESS OTHERWISE SPECIFIED, SURFACES TO BE 125 MICROINCHES EXCEPT UPSET HEAD.
- BREAK SHARP EDGES .003-.015 UNLESS OTHERWISE SPECIFIED.
- DIMENSIONS IN INCHES. UNLESS OTHERWISE SPECIFIED, TOLERANCES: LINEAR DIMENSIONS $\pm .010$, ANGULAR DIMENSIONS $\pm 5^\circ$.
- DO NOT USE UNASSIGNED PART NUMBERS.

AS & AMS ARE SOCIETY OF AUTOMOTIVE ENGINEERS, INC. PUBLICATIONS.
THIS STANDARD WAS DEVELOPED COOPERATIVELY WITH THE MILITARY SERVICES BY THE SAE AEROSPACE PART STANDARDS DIV.

P.A. USAP - 11	TITLE	MILITARY STANDARD
Other Cues	BOLT, MACHINE - DOUBLE HEXAGON EXTENDED WASHER HEAD, PD SHANK, TITANIUM AMS 4967, .500-20 UNJF-3A	MS9755 (ASG)
PROCURMENT SPECIFICATION	SUPERSEDES:	SHEET 1 OF 1

DD FORM 672-1 (Limited coordination)

PREVIOUS EDITIONS OF THIS FORM ARE OBSOLETE.

Project No. 5306-F062
U.S. GOVERNMENT PRINTING OFFICE: 1969-341-518/A-5340

APPROVED 1 Mar 69 REVISED