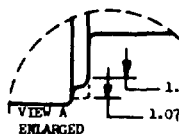
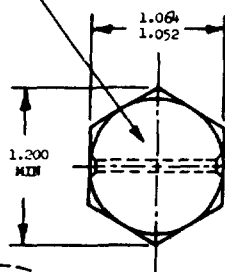
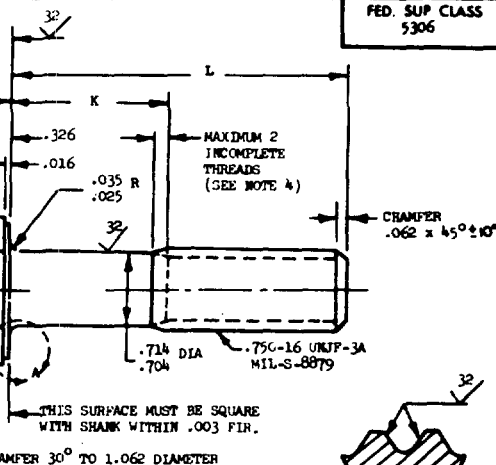


**MS9693**

MARK PART NUMBER AND  
MANUFACTURER'S IDENTIFICATION  
PER AS478 CLASS A



.070 DIA  
CSK 90° TO .100  
DIA BOTH ENDS



SECTION THRU  
THREAD PROFILE

PART NUMBER	L	K	APPROX WEIGHT LB/100	PART NUMBER	L	K	APPROX WEIGHT LB/100
MS9693-05	1.125	.129-.149	24.13	MS9693-31	3.625	1.815-1.875	51.16
MS9693-06	1.250	.129-.149	24.83	MS9693-32	3.750	1.940-2.000	52.54
MS9693-07	1.312	.129-.149	25.53	MS9693-33	3.875	2.065-2.125	53.92
MS9693-08	1.375	.129-.149	26.22	MS9693-34	4.000	2.190-2.250	55.31
MS9693-09	1.438	.129-.149	26.91	MS9693-35	4.125	2.315-2.375	56.69
MS9693-10	1.500	.129-.149	27.60	MS9693-36	4.250	2.440-2.500	58.08
MS9693-11	1.562	.129-.149	28.30	MS9693-37	4.375	2.565-2.625	59.46
MS9693-12	1.625	.129-.149	28.99	MS9693-38	4.500	2.690-2.750	60.85
MS9693-13	1.688	.129-.149	29.68	MS9693-39	4.625	2.815-2.875	62.23
MS9693-14	1.750	.129-.149	30.38	MS9693-40	4.750	2.940-3.000	63.62
MS9693-15	1.812	.129-.149	31.07	MS9693-41	4.875	3.065-3.125	65.00
MS9693-16	1.875	.129-.149	31.76	MS9693-42	5.000	3.190-3.250	66.38
MS9693-17	1.938	.129-.168	32.45	MS9693-43	5.125	3.315-3.375	67.77
MS9693-18	2.000	.190-.250	33.15	MS9693-44	5.250	3.440-3.500	69.15
MS9693-19	2.125	.315-.375	34.53	MS9693-45	5.375	3.565-3.625	70.54
MS9693-20	2.250	.440-.500	35.92	MS9693-46	5.500	3.690-3.750	71.93
MS9693-21	2.375	.565-.625	37.30	MS9693-47	5.625	3.815-3.875	73.32
MS9693-22	2.500	.690-.750	38.69	MS9693-48	5.750	3.940-4.000	74.70
MS9693-23	2.625	.815-.875	40.07	MS9693-49	5.875	4.065-4.125	76.08
MS9693-24	2.750	.940-1.000	41.45	MS9693-50	6.000	4.190-4.250	77.47
MS9693-25	2.875	1.065-1.125	42.84				
MS9693-26	3.000	1.190-1.250	44.22				
MS9693-27	3.125	1.315-1.375	45.61				
MS9693-28	3.250	1.440-1.500	46.99				
MS9693-29	3.375	1.565-1.625	48.38				
MS9693-30	3.500	1.690-1.750	49.77				

1. SHANK SHALL BE STRAIGHT WITHIN .002 TOTAL PER INCH OF BOLT LENGTH.
2. THE CONCENTRICITY OF THREAD PD IN RELATION TO THE SHANK SHALL BE WITHIN .006 FIR.
3. THE CONCENTRICITY OF THE SHANK IN RELATION TO THE WASHER FACE DIAMETER AND HEXAGON SHALL BE WITHIN .032 FIR.
4. INCOMPLETE THREADS NOT TO ENTER FILLET.
5. MATERIAL: STEEL AMS 6304.
6. HARDNESS: ROCKWELL C42-46.
7. FINISH: DIFFUSED NICKEL CADMIUM PLATE PER AMS 2416. DIMENSIONS SPECIFIED ARE AFTER PLATING. CONTACT POINTS PERMISSIBLE.
8. MANUFACTURING SPECIFICATION: AMS 7459.
9. MAGNETIC PARTICLE INSPECTION PER AMS 2640 BEFORE PLATING.
10. SURFACE TEXTURE: USAS B46.1-1962. UNLESS OTHERWISE SPECIFIED, SURFACES TO BE 125 MICROINCHES EXCEPT UPSET HEAD.
11. BREAK SHARP EDGES .003-.015 UNLESS OTHERWISE SPECIFIED.
12. DIMENSIONS IN INCHES. UNLESS OTHERWISE SPECIFIED, TOLERANCES: LINEAR DIMENSIONS  $\pm .010$ , ANGULAR DIMENSIONS  $\pm 5^\circ$ .
13. DO NOT USE UNASSIGNED PART NUMBERS.

AS & AMS ARE SOCIETY OF AUTOMOTIVE ENGINEERS, INC. PUBLICATIONS.  
THIS STANDARD WAS DEVELOPED COOPERATIVELY WITH THE MILITARY SERVICES BY THE SAE AEROSPACE PART STANDARDS DIVISION.

P.A. Air Force-II	INTERNATIONAL INTEREST	TITLE	MILITARY STANDARD
Other Cust Navy-AS	ASCC AIR STD 17/2	BOLT, MACHINE - HEXAGON HEAD, DRILLED, 1 HOLE, PD SHANK, STEEL AMS 6304, DIFFUSED NICKEL CADMIUM PLATE, .750-16 UNF-3A	<b>MS9693</b>
PROCUREMENT SPECIFICATION AMS7459	SUPERSEDES:		SHEET 1 OF 1

DD FORM 672-1 (Limited circulation)

PREVIOUS EDITIONS OF THIS FORM ARE OBSOLETE

☆ U. S. GOVERNMENT PRINTING OFFICE: 1971-714-157/823

This standard has been approved by the Department of Air Force and the Department of the Navy and is hereby approved for use by the military. All other military agencies are required to comply with this standard where suitable.

APPROVED 9 Jul 71 REVISED