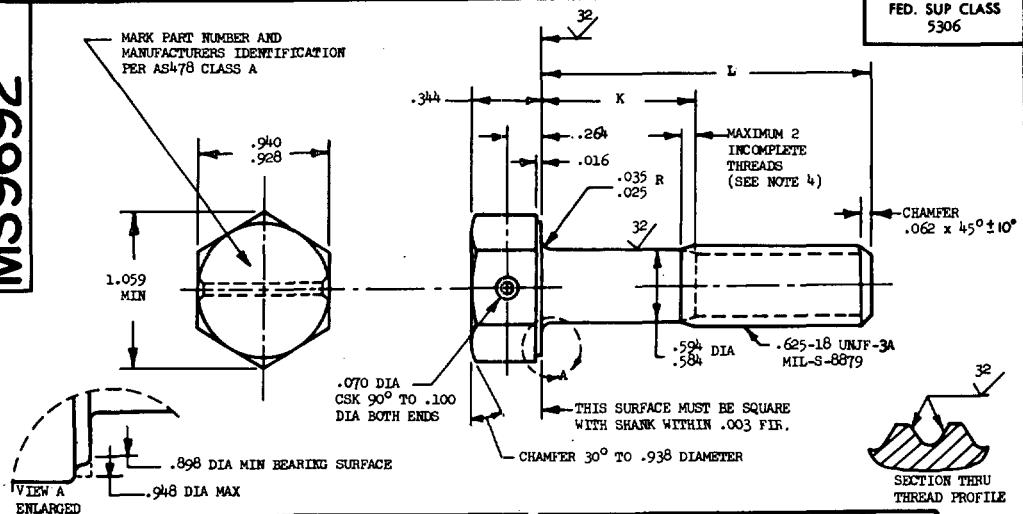


MS9692

PART NUMBER	L	K	APPROX WEIGHT LB/100	PART NUMBER	L	K	APPROX WEIGHT LB/100
MS9692-03	.938	.118-.138	14.37	MS9692-31	3.375	1.815-1.875	32.97
MS9692-04	1.000	.118-.138	14.85	MS9692-32	3.500	1.940-2.000	33.92
MS9692-05	1.062	.118-.138	15.33	MS9692-33	3.625	2.065-2.125	34.87
MS9692-06	1.125	.118-.138	15.81	MS9692-34	3.750	2.190-2.250	35.83
MS9692-07	1.188	.118-.138	16.29	MS9692-35	3.875	2.315-2.375	36.78
MS9692-08	1.250	.118-.138	16.76	MS9692-36	4.000	2.440-2.500	37.73
MS9692-09	1.312	.118-.138	17.24	MS9692-37	4.125	2.565-2.625	38.69
MS9692-10	1.375	.118-.138	17.72	MS9692-38	4.250	2.690-2.750	39.64
MS9692-11	1.438	.118-.138	18.19	MS9692-39	4.375	2.815-2.875	40.60
MS9692-12	1.500	.118-.138	18.67	MS9692-40	4.500	2.940-3.000	41.54
MS9692-13	1.562	.118-.138	19.14	MS9692-41	4.625	3.065-3.125	42.50
MS9692-14	1.625	.118-.138	19.62	MS9692-42	4.750	3.190-3.250	43.43
MS9692-15	1.688	.128-.188	20.10	MS9692-43	4.875	3.315-3.375	44.40
MS9692-16	1.750	.190-.250	20.58	MS9692-44	5.000	3.440-3.500	45.36
MS9692-17	1.812	.252-.312	21.06	MS9692-45	5.125	3.565-3.625	46.31
MS9692-18	1.875	.315-.375	21.52	MS9692-46	5.250	3.690-3.750	47.26
MS9692-19	1.938	.378-.438	22.00	MS9692-47	5.375	3.815-3.875	48.22
MS9692-20	2.000	.440-.500	22.48	MS9692-48	5.500	3.940-4.000	49.17
MS9692-21	2.125	.565-.625	23.44	MS9692-49	5.625	4.065-4.125	50.13
MS9692-22	2.250	.690-.750	24.39	MS9692-50	5.750	4.190-4.250	51.08
MS9692-23	2.375	.815-.875	25.34	MS9692-51	5.875	4.315-4.375	52.03
MS9692-24	2.500	.940-1.000	26.29	MS9692-52	6.000	4.440-4.500	52.99
MS9692-25	2.625	1.065-1.125	27.25				
MS9692-26	2.750	1.190-1.250	28.20				
MS9692-27	2.875	1.315-1.375	29.15				
MS9692-28	3.000	1.440-1.500	30.11				
MS9692-29	3.125	1.565-1.625	31.06				
MS9692-30	3.250	1.690-1.750	32.01				

- SHANK SHALL BE STRAIGHT WITHIN .002 TOTAL PER INCH OF BOLT LENGTH.
- THE CONCENTRICITY OF THREAD PD IN RELATION TO THE SHANK SHALL BE WITHIN .006 FIR.
- THE CONCENTRICITY OF THE SHANK IN RELATION TO THE WASHER FACE DIAMETER AND HEXAGON SHALL BE WITHIN .028 FIR.
- INCOMPLETE THREADS NOT TO ENTER FILLET.
- MATERIAL: STEEL AMS 6304.
- HARDNESS: ROCKWELL C42-46.
- FINISH: DIFFUSED NICKEL CADMIUM PLATE PER AMS 2416. DIMENSIONS SPECIFIED ARE AFTER PLATING. CONTACT POINTS PERMISSIBLE.
- MANUFACTURING SPECIFICATION: AMS 7459.
- MAGNETIC PARTICLE INSPECTION PER AMS 2640 BEFORE PLATING.
- SURFACE TEXTURE: USAS B46.1-1962. UNLESS OTHERWISE SPECIFIED, SURFACES TO BE 125 MICROINCHES EXCEPT UPSET HEAD.
- BREAK SHARP EDGES .003-.015 UNLESS OTHERWISE SPECIFIED.
- DIMENSIONS IN INCHES. UNLESS OTHERWISE SPECIFIED, TOLERANCES: LINEAR DIMENSIONS $\pm .010$, ANGULAR DIMENSIONS $\pm 5^\circ$.
- DO NOT USE UNASSIGNED PART NUMBERS.

AS & AMS ARE SOCIETY OF AUTOMOTIVE ENGINEERS, INC. PUBLICATIONS.
THIS STANDARD WAS DEVELOPED COOPERATIVELY WITH THE MILITARY SERVICES BY THE SAE AEROSPACE PART STANDARDS DIVISION.

P.A. Air Force-II	INTERNATIONAL INTEREST	TITLE	MILITARY STANDARD
Other Cust Navy-AS	ASCC AIR STD 17/2	BOLT, MACHINE - HEXAGON HEAD, DRILLED, 1 HOLE, PD SHANK, STEEL AMS 6304, DIFFUSED NICKEL CADMIUM PLATE, .625-18 UNF-3A	MS9692
PROCUREMENT SPECIFICATION AMST459	SUPERSEDES:		SHEET 1 OF 1

DD FORM 672-1 (Limited coordination)

PREVIOUS EDITIONS OF THIS FORM ARE OBSOLETE

☆ U. S. GOVERNMENT PRINTING OFFICE: 1977-714-157/822

This standard has been approved by the Department of Air Force and the Department of the Navy and is mandatory for use by that activity. All other military activities are required to employ this standard where suitable.

REVISED 8 Jul 71 APPROVED