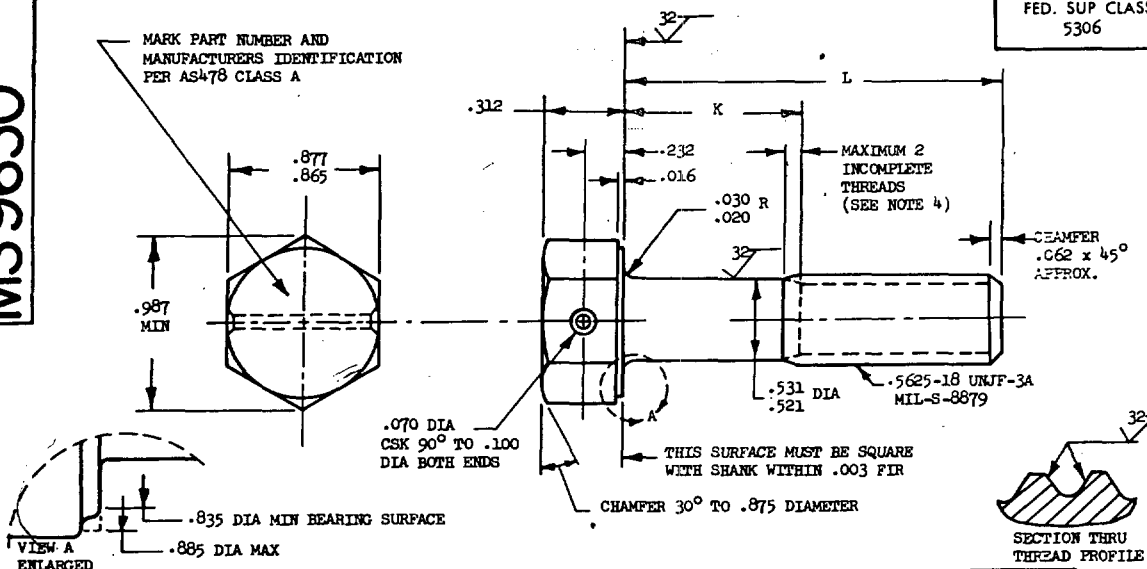


MS9630

PART NUMBER	L	K	APPROX WEIGHT LB/100	PART NUMBER	L	K	APPROX WEIGHT LB/100
MS9630-04	.875	.113-.133	6.53	MS9630-31	3.125	1.690-1.750	14.40
MS9630-05	.938	.113-.133	6.75	MS9630-32	3.250	1.815-1.875	14.84
MS9630-06	1.000	.113-.133	6.97	MS9630-33	3.375	1.940-2.000	15.27
MS9630-07	1.062	.113-.133	7.19	MS9630-34	3.500	2.065-2.125	15.71
MS9630-08	1.125	.113-.133	7.42	MS9630-35	3.625	2.190-2.250	16.15
MS9630-09	1.188	.113-.133	7.64	MS9630-36	3.750	2.315-2.375	16.58
MS9630-10	1.250	.113-.133	7.86	MS9630-37	3.875	2.440-2.500	17.02
MS9630-11	1.312	.113-.133	8.08	MS9630-38	4.000	2.565-2.625	17.46
MS9630-12	1.375	.113-.133	8.30	MS9630-39	4.125	2.690-2.750	17.89
MS9630-13	1.438	.113-.133	8.51	MS9630-40	4.250	2.815-2.875	18.33
MS9630-14	1.500	.113-.133	8.73	MS9630-41	4.375	2.940-3.000	18.76
MS9630-15	1.562	.128-.168	8.95	MS9630-42	4.500	3.065-3.125	19.20
MS9630-16	1.625	.190-.250	9.17	MS9630-43	4.625	3.190-3.250	19.64
MS9630-17	1.688	.252-.312	9.39	MS9630-44	4.750	3.315-3.375	20.07
MS9630-18	1.750	.315-.375	9.60	MS9630-45	4.875	3.440-3.500	20.51
MS9630-19	1.812	.378-.438	9.82	MS9630-46	5.000	3.565-3.625	20.94
MS9630-20	1.875	.440-.500	10.04	MS9630-47	5.125	3.690-3.750	21.38
MS9630-21	1.938	.502-.562	10.26	MS9630-48	5.250	3.815-3.875	21.82
MS9630-22	2.000	.565-.625	10.48	MS9630-49	5.375	3.940-4.000	22.25
MS9630-23	2.125	.690-.750	10.91	MS9630-50	5.500	4.065-4.125	22.69
MS9630-24	2.250	.815-.875	11.35	MS9630-51	5.625	4.190-4.250	23.13
MS9630-25	2.375	.940-1.000	11.78	MS9630-52	5.750	4.315-4.375	23.56
MS9630-26	2.500	1.065-1.125	12.22	MS9630-53	5.875	4.440-4.500	24.00
MS9630-27	2.625	1.190-1.250	12.66	MS9630-54	6.000	4.565-4.625	24.44
MS9630-28	2.750	1.315-1.375	13.09				
MS9630-29	2.875	1.440-1.500	13.53				
MS9630-30	3.000	1.565-1.625	13.97				

- SHANK SHALL BE STRAIGHT WITHIN .002 TOTAL PER INCH OF BOLT LENGTH.
- THE CONCENTRICITY OF THREAD PD IN RELATION TO THE SHANK SHALL BE WITHIN .006 FIR.
- THE CONCENTRICITY OF THE SHANK IN RELATION TO THE WASHER FACE DIAMETER AND HEXAGON SHALL BE WITHIN .026 FIR.
- INCOMPLETE THREADS NOT TO ENTER FILLET.
- MATERIAL: TITANIUM AMS 4967.
- HARDNESS: ROCKWELL C36-42.
- MANUFACTURING SPECIFICATION: AMS 7461, EXCEPT MATERIAL AS NOTED.
- FLUORESCENT PENETRANT INSPECTION PER AMS 2645.
- SURFACE TEXTURE: USAS B46.1-1962. UNLESS OTHERWISE SPECIFIED, SURFACES TO BE 125 MICROINCHES EXCEPT UPSET HEAD.
- BREAK SHARP EDGES .003-.015 UNLESS OTHERWISE SPECIFIED.
- DIMENSIONS IN INCHES. UNLESS OTHERWISE SPECIFIED, TOLERANCES: LINEAR DIMENSIONS $\pm .010$, ANGULAR DIMENSIONS $\pm 5^\circ$.
- DO NOT USE UNASSIGNED PART NUMBERS.

Ⓟ REINSTATED AFTER 27 JUN 84

AS & AMS ARE SOCIETY OF AUTOMOTIVE ENGINEERS, INC. PUBLICATIONS.

THIS STANDARD WAS DEVELOPED COOPERATIVELY WITH THE MILITARY SERVICES BY THE SAE AEROSPACE PART STANDARDS DIVISION.

P.A. AS Ⓟ Other Cust 99	INTERNATIONAL INTEREST ASCC AIR STD 1772	TITLE BOLT, MACHINE - HEXAGON HEAD, DRILLED, 1 HOLE, PD SHANK, TITANIUM AMS 4967, .5625-18 UNJF-3A	MILITARY STANDARD MS9630
PROCUREMENT SPECIFICATION NONE	SUPERSEDES:	PAGE 1 OF 1	

REVIEW ACTIVITIES:
AIR FORCE-82
DLA-1S

This military standard is approved by the Department of Defense and its mandatory on all activities. Selection for all new engineering and design applications and for repetitive use shall be made from this document.

Ⓐ 21 DEC 83 Ⓟ 27 JUN 84

APPROVED 3 MAR 70 REVISED