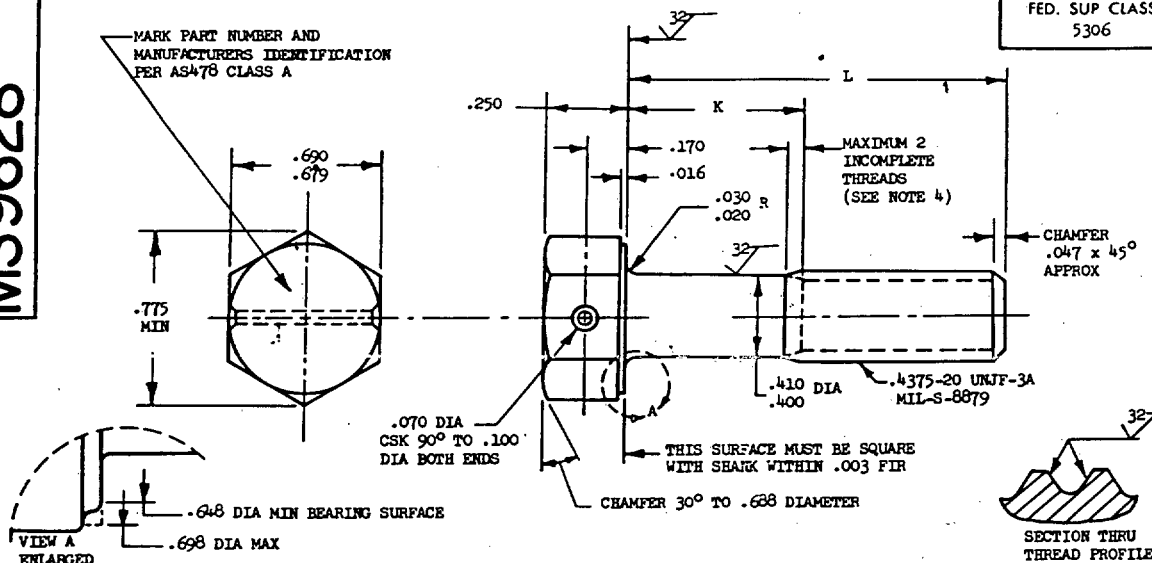


**MS9628**

PART NUMBER	L	K	APPROX WEIGHT LB/100	PART NUMBER	L	K	APPROX WEIGHT LB/100
MS9628-04	.688	.105-.125	3.58	MS9628-31	2.750	1.565-1.625	7.87
MS9628-05	.750	.105-.125	3.73	MS9628-32	2.875	1.690-1.750	8.13
MS9628-06	.812	.105-.125	3.85	MS9628-33	3.000	1.815-1.875	8.39
MS9628-07	.875	.105-.125	3.98	MS9628-34	3.125	1.940-2.000	8.65
MS9628-08	.938	.105-.125	4.11	MS9628-35	3.250	2.065-2.125	8.90
MS9628-09	1.000	.105-.125	4.24	MS9628-36	3.375	2.190-2.250	9.16
MS9628-10	1.062	.105-.125	4.37	MS9628-37	3.500	2.315-2.375	9.42
MS9628-11	1.125	.105-.125	4.50	MS9628-38	3.625	2.440-2.500	9.68
MS9628-12	1.188	.105-.125	4.63	MS9628-39	3.750	2.565-2.625	9.94
MS9628-13	1.250	.105-.125	4.76	MS9628-40	3.875	2.690-2.750	10.20
MS9628-14	1.312	.128-.188	4.89	MS9628-41	4.000	2.815-2.875	10.46
MS9628-15	1.375	.190-.250	5.02	MS9628-42	4.125	2.940-3.000	10.72
MS9628-16	1.438	.252-.312	5.15	MS9628-43	4.250	3.065-3.125	10.98
MS9628-17	1.500	.315-.375	5.28	MS9628-44	4.375	3.190-3.250	11.24
MS9628-18	1.562	.378-.438	5.41	MS9628-45	4.500	3.315-3.375	11.50
MS9628-19	1.625	.440-.500	5.54	MS9628-46	4.625	3.440-3.500	11.76
MS9628-20	1.688	.502-.562	5.67	MS9628-47	4.750	3.565-3.625	12.01
MS9628-21	1.750	.565-.625	5.75	MS9628-48	4.875	3.690-3.750	12.27
MS9628-22	1.812	.628-.688	5.88	MS9628-49	5.000	3.815-3.875	12.53
MS9628-23	1.875	.690-.750	6.01	MS9628-50	5.125	3.940-4.000	12.79
MS9628-24	1.938	.752-.812	6.16	MS9628-51	5.250	4.065-4.125	13.05
MS9628-25	2.000	.815-.875	6.31	MS9628-52	5.375	4.190-4.250	13.31
MS9628-26	2.125	.940-1.000	6.57	MS9628-53	5.500	4.315-4.375	13.57
MS9628-27	2.250	1.065-1.125	6.83	MS9628-54	5.625	4.440-4.500	13.82
MS9628-28	2.375	1.190-1.250	7.09	MS9628-55	5.750	4.565-4.625	14.09
MS9628-29	2.500	1.315-1.375	7.35	MS9628-56	5.875	4.690-4.750	14.34
MS9628-30	2.625	1.440-1.500	7.61	MS9628-57	6.000	4.815-4.875	14.60

1. SHANK SHALL BE STRAIGHT WITHIN .0025 TOTAL PER INCH OF BOLT LENGTH.
2. THE CONCENTRICITY OF THREAD PD IN RELATION TO THE SHANK SHALL BE WITHIN .006 FIR.
3. THE CONCENTRICITY OF THE SHANK IN RELATION TO THE WASHER FACE DIAMETER AND HEXAGON SHALL BE WITHIN .019 FIR.
4. INCOMPLETE THREADS NOT TO ENTER FILLET.
5. MATERIAL: TITANIUM AMS 4967.
6. HARDNESS: ROCKWELL C36-42.
7. MANUFACTURING SPECIFICATION: AMS 7461, EXCEPT MATERIAL AS NOTED.
8. FLUORESCENT PENETRANT INSPECTION PER AMS 2645.
9. SURFACE TEXTURE: USAS B46.1-1962. UNLESS OTHERWISE SPECIFIED, SURFACES TO BE 125 MICROINCHES EXCEPT UPSET HEAD.
10. BREAK SHARP EDGES .003-.015 UNLESS OTHERWISE SPECIFIED.
11. DIMENSIONS IN INCHES. UNLESS OTHERWISE SPECIFIED, TOLERANCES: LINEAR DIMENSIONS  $\pm .010$ , ANGULAR DIMENSIONS  $\pm 5^\circ$ .
12. DO NOT USE UNASSIGNED PART NUMBERS.

**(B) REINSTATED AFTER 27 JUN 84**

AS & AMS ARE SOCIETY OF AUTOMOTIVE ENGINEERS, INC. PUBLICATIONS.  
THIS STANDARD WAS DEVELOPED COOPERATIVELY WITH THE MILITARY SERVICES BY THE SAE AEROSPACE PART STANDARDS DIVISION.

P.A. A'S Other Cust 99	INTERNATIONAL INTEREST ASCC AIR STD 17/2	TITLE BOLT, MACHINE - HEXAGON HEAD, DRILLED, 1 HOLE, PD SHANK, TITANIUM AMS 4967, .4375-20 UNJF-3A	MILITARY STANDARD
			<b>MS9628</b>
PROCUREMENT SPECIFICATION NONE	SUPERSEDES:		PAGE 1 OF 1

Review activities:  
AIR FORCE - 82  
DLA - IS

This military standard is approved by the Department of Defense and is mandatory on all activities. Selection for all new engineering and design applications and for repetitive use shall be made from this document.

APPROVED 3 MAR 70 REVISED 21 DEC 83 (B) 27 JUN 84