

17581

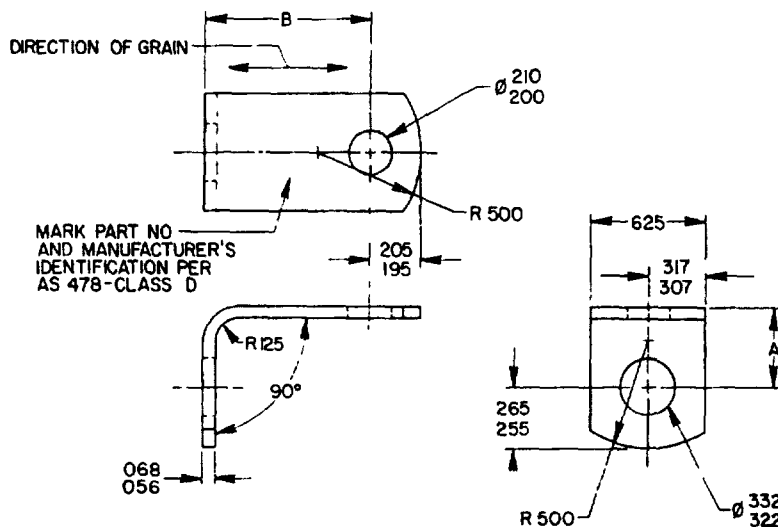
FED SUP CLASS  
5340

TABLE I. DASH NUMBERS AND DIMENSIONS

B LENGTH	A-LENGTH						
	.500	.562	625	688	750	812	.875
DASH NUMBERS							
.438	-005 <sup>1/</sup>	-035 <sup>1/</sup>	-065 <sup>1/</sup>	-095 <sup>1/</sup>	-125 <sup>1/</sup>	-155	-185 <sup>1/</sup>
.500	-006 <sup>1/</sup>	-036 <sup>1/</sup>	-066 <sup>1/</sup>	-096 <sup>1/</sup>	-126 <sup>1/</sup>	-156	-186 <sup>1/</sup>
.562	-007 <sup>1/</sup>	-037 <sup>1/</sup>	-067 <sup>1/</sup>	-097 <sup>1/</sup>	-127 <sup>1/</sup>	-157	-187 <sup>1/</sup>
.625	-008 <sup>1/</sup>	-038 <sup>1/</sup>	-068 <sup>1/</sup>	-098 <sup>1/</sup>	-128 <sup>1/</sup>	-158	-188 <sup>1/</sup>
.688	-009 <sup>1/</sup>	-039 <sup>1/</sup>	-069 <sup>1/</sup>	-099 <sup>1/</sup>	-129 <sup>1/</sup>	-159	-189 <sup>1/</sup>
.750	-010 <sup>1/</sup>	-040 <sup>1/</sup>	-070 <sup>1/</sup>	-100 <sup>1/</sup>	-130 <sup>1/</sup>	-160	-190 <sup>1/</sup>
.812	-011	-041	-071	-101	-131	-161	-191
.875	-012 <sup>1/</sup>	-042 <sup>1/</sup>	-072 <sup>1/</sup>	-102 <sup>1/</sup>	-132 <sup>1/</sup>	-162	-192 <sup>1/</sup>
.938	-013	-043	-073	-103	-133	-163	-193
1.000	-014 <sup>1/</sup>	-044 <sup>1/</sup>	-074 <sup>1/</sup>	-104 <sup>1/</sup>	-134 <sup>1/</sup>	-164	-194 <sup>1/</sup>
1.062	-015	-045	-075	-105	-135	-165	-195
1.125	-016 <sup>1/</sup>	-046 <sup>1/</sup>	-076 <sup>1/</sup>	-106 <sup>1/</sup>	-136 <sup>1/</sup>	-166 <sup>1/</sup>	-196 <sup>1/</sup>
1.188	-017	-047	-077	-107	-137	-167	-197
1.250	-018 <sup>1/</sup>	-048 <sup>1/</sup>	-078 <sup>1/</sup>	-108 <sup>1/</sup>	-138 <sup>1/</sup>	-168 <sup>1/</sup>	-198 <sup>1/</sup>
1.312	-019	-049	-079	-109	-139	-169	-199
1.375	-020 <sup>1/</sup>	-050 <sup>1/</sup>	-080 <sup>1/</sup>	-110 <sup>1/</sup>	-140 <sup>1/</sup>	-170 <sup>1/</sup>	-200 <sup>1/</sup>
1.438	-021	-051	-081	-111	-141	-171	-201
1.500	-022 <sup>1/</sup>	-052 <sup>1/</sup>	-082 <sup>1/</sup>	-112 <sup>1/</sup>	-142 <sup>1/</sup>	-172 <sup>1/</sup>	-202 <sup>1/</sup>

<sup>1/</sup> PREFERRED SIZES

ⓑ ENTIRE STANDARD REVISED

PA NAVY-AS INTERNATIONAL TITLE

Other Cust

BRACKET,ANGLE,90°,CRES  
.190 x .312 BOLT

MILITARY STANDARD

AIR FORCE-11

MS9602

PROCUREMENT SPECIFICATION

SUPERSEDES

NONE

MS9230

PAGE

OF

1

3

APPROVED 22 NOV 66 REVISED ⓑ 5 JUN 87

DISTRIBUTION STATEMENT A Approved for public release; distribution is unlimited  
This military standard is approved for use by all Departments and Agencies of the Department of Defense  
Selection for all new engineering and design applications and for repetitive use shall be made from this document when applicable

USER ACTIVITIES

REVIEWER ACTIVITIES  
DLA-1S

AMSC N/A

DD FORM 672-1 (COORDINATED)

5340-1826

014910

FED. SUP. CLASS  
5340

TABLE I. DASH NUMBERS AND DIMENSIONS - CONTINUED

B LENGTH	A-LENGTH			
	.938	1.000	1.125	1.250
DASH NUMBERS				
.438	-215	-245 <sup>1</sup> / <sub>2</sub>	-305 <sup>1</sup> / <sub>2</sub>	-365 <sup>1</sup> / <sub>2</sub>
.500	-216	-246 <sup>1</sup> / <sub>2</sub>	-306 <sup>1</sup> / <sub>2</sub>	-366 <sup>1</sup> / <sub>2</sub>
.562	-217	-247 <sup>1</sup> / <sub>2</sub>	-307 <sup>1</sup> / <sub>2</sub>	-367 <sup>1</sup> / <sub>2</sub>
.625	-218	-248 <sup>1</sup> / <sub>2</sub>	-308 <sup>1</sup> / <sub>2</sub>	-368 <sup>1</sup> / <sub>2</sub>
.688	-219	-249 <sup>1</sup> / <sub>2</sub>	-309 <sup>1</sup> / <sub>2</sub>	-369 <sup>1</sup> / <sub>2</sub>
.750	-220	-250 <sup>1</sup> / <sub>2</sub>	-310 <sup>1</sup> / <sub>2</sub>	-370 <sup>1</sup> / <sub>2</sub>
.812	-221	-251 <sup>1</sup> / <sub>2</sub>	-311 <sup>1</sup> / <sub>2</sub>	-371 <sup>1</sup> / <sub>2</sub>
.875	-222	-252 <sup>1</sup> / <sub>2</sub>	-312 <sup>1</sup> / <sub>2</sub>	-372 <sup>1</sup> / <sub>2</sub>
.938	-223	-253 <sup>1</sup> / <sub>2</sub>	-313 <sup>1</sup> / <sub>2</sub>	-373 <sup>1</sup> / <sub>2</sub>
1.000	-224	-254 <sup>1</sup> / <sub>2</sub>	-314 <sup>1</sup> / <sub>2</sub>	-374 <sup>1</sup> / <sub>2</sub>
1.062	-225	-255 <sup>1</sup> / <sub>2</sub>	-315 <sup>1</sup> / <sub>2</sub>	-375 <sup>1</sup> / <sub>2</sub>
1.125	-226	-256 <sup>1</sup> / <sub>2</sub>	-316 <sup>1</sup> / <sub>2</sub>	-376 <sup>1</sup> / <sub>2</sub>
1.188	-227	-257 <sup>1</sup> / <sub>2</sub>	-317 <sup>1</sup> / <sub>2</sub>	-377 <sup>1</sup> / <sub>2</sub>
1.250	-228	-258 <sup>1</sup> / <sub>2</sub>	-318 <sup>1</sup> / <sub>2</sub>	-378 <sup>1</sup> / <sub>2</sub>
1.312	-229	-259 <sup>1</sup> / <sub>2</sub>	-319 <sup>1</sup> / <sub>2</sub>	-379 <sup>1</sup> / <sub>2</sub>
1.375	-230	-260 <sup>1</sup> / <sub>2</sub>	-320 <sup>1</sup> / <sub>2</sub>	-380 <sup>1</sup> / <sub>2</sub>
1.438	-231	-261 <sup>1</sup> / <sub>2</sub>	-321 <sup>1</sup> / <sub>2</sub>	-381 <sup>1</sup> / <sub>2</sub>
1.500	-232	-262 <sup>1</sup> / <sub>2</sub>	-322 <sup>1</sup> / <sub>2</sub>	-382 <sup>1</sup> / <sub>2</sub>

<sup>1</sup>/ PREFERRED SIZES

TABLE I. DASH NUMBERS AND DIMENSIONS - CONTINUED

B LENGTH	A-LENGTH				
	1.375	1.500	1.625	1.750	1.875
DASH NUMBERS					
.438	-425 <sup>1</sup> / <sub>2</sub>	-485 <sup>1</sup> / <sub>2</sub>	-545 <sup>1</sup> / <sub>2</sub>	-605 <sup>1</sup> / <sub>2</sub>	-665 <sup>1</sup> / <sub>2</sub>
.500	-426 <sup>1</sup> / <sub>2</sub>	-486 <sup>1</sup> / <sub>2</sub>	-546 <sup>1</sup> / <sub>2</sub>	-606 <sup>1</sup> / <sub>2</sub>	-666 <sup>1</sup> / <sub>2</sub>
.562	-427 <sup>1</sup> / <sub>2</sub>	-487 <sup>1</sup> / <sub>2</sub>	-547 <sup>1</sup> / <sub>2</sub>	-607 <sup>1</sup> / <sub>2</sub>	-667 <sup>1</sup> / <sub>2</sub>
.625	-428 <sup>1</sup> / <sub>2</sub>	-488 <sup>1</sup> / <sub>2</sub>	-548 <sup>1</sup> / <sub>2</sub>	-608 <sup>1</sup> / <sub>2</sub>	-668 <sup>1</sup> / <sub>2</sub>
.688	-429 <sup>1</sup> / <sub>2</sub>	-489 <sup>1</sup> / <sub>2</sub>	-549 <sup>1</sup> / <sub>2</sub>	-609 <sup>1</sup> / <sub>2</sub>	-669 <sup>1</sup> / <sub>2</sub>
.750	-430 <sup>1</sup> / <sub>2</sub>	-490 <sup>1</sup> / <sub>2</sub>	-550 <sup>1</sup> / <sub>2</sub>	-610 <sup>1</sup> / <sub>2</sub>	-670 <sup>1</sup> / <sub>2</sub>
.812	-431 <sup>1</sup> / <sub>2</sub>	-491 <sup>1</sup> / <sub>2</sub>	-551 <sup>1</sup> / <sub>2</sub>	-611 <sup>1</sup> / <sub>2</sub>	-671 <sup>1</sup> / <sub>2</sub>
.875	-432 <sup>1</sup> / <sub>2</sub>	-492 <sup>1</sup> / <sub>2</sub>	-552 <sup>1</sup> / <sub>2</sub>	-612 <sup>1</sup> / <sub>2</sub>	-672 <sup>1</sup> / <sub>2</sub>
.938	-433 <sup>1</sup> / <sub>2</sub>	-493 <sup>1</sup> / <sub>2</sub>	-553 <sup>1</sup> / <sub>2</sub>	-613 <sup>1</sup> / <sub>2</sub>	-673 <sup>1</sup> / <sub>2</sub>
1.000	-434 <sup>1</sup> / <sub>2</sub>	-494 <sup>1</sup> / <sub>2</sub>	-554 <sup>1</sup> / <sub>2</sub>	-614 <sup>1</sup> / <sub>2</sub>	-674 <sup>1</sup> / <sub>2</sub>
1.062	-435 <sup>1</sup> / <sub>2</sub>	-495 <sup>1</sup> / <sub>2</sub>	-555 <sup>1</sup> / <sub>2</sub>	-615 <sup>1</sup> / <sub>2</sub>	-675 <sup>1</sup> / <sub>2</sub>
1.125	-436 <sup>1</sup> / <sub>2</sub>	-496 <sup>1</sup> / <sub>2</sub>	-556 <sup>1</sup> / <sub>2</sub>	-616 <sup>1</sup> / <sub>2</sub>	-676 <sup>1</sup> / <sub>2</sub>
1.188	-437 <sup>1</sup> / <sub>2</sub>	-497 <sup>1</sup> / <sub>2</sub>	-557 <sup>1</sup> / <sub>2</sub>	-617 <sup>1</sup> / <sub>2</sub>	-677 <sup>1</sup> / <sub>2</sub>
1.250	-438 <sup>1</sup> / <sub>2</sub>	-498 <sup>1</sup> / <sub>2</sub>	-558 <sup>1</sup> / <sub>2</sub>	-618 <sup>1</sup> / <sub>2</sub>	-678 <sup>1</sup> / <sub>2</sub>
1.312	-439 <sup>1</sup> / <sub>2</sub>	-499 <sup>1</sup> / <sub>2</sub>	-559 <sup>1</sup> / <sub>2</sub>	-619 <sup>1</sup> / <sub>2</sub>	-679 <sup>1</sup> / <sub>2</sub>
1.375	-440 <sup>1</sup> / <sub>2</sub>	-500 <sup>1</sup> / <sub>2</sub>	-560 <sup>1</sup> / <sub>2</sub>	-620 <sup>1</sup> / <sub>2</sub>	-680 <sup>1</sup> / <sub>2</sub>
1.438	-441 <sup>1</sup> / <sub>2</sub>	-501 <sup>1</sup> / <sub>2</sub>	-561 <sup>1</sup> / <sub>2</sub>	-621 <sup>1</sup> / <sub>2</sub>	-681 <sup>1</sup> / <sub>2</sub>
1.500	-442 <sup>1</sup> / <sub>2</sub>	-502 <sup>1</sup> / <sub>2</sub>	-562 <sup>1</sup> / <sub>2</sub>	-622 <sup>1</sup> / <sub>2</sub>	-682 <sup>1</sup> / <sub>2</sub>

<sup>1</sup>/ PREFERRED SIZES

PA NAVY-AS Other Cust	INTERNATIONAL INTEREST	TITLE BRACKET, ANGLE, 90°, CRES, .190 x .312 BOLT	MILITARY STANDARD MS9602
AIR FORCE-II	PROCUREMENT SPECIFICATION NONE	SUPERSEDES MS9230	PAGE 2 OF 3

USER ACTIVITIES

REVIEWER ACTIVITIES  
DLA-1S

This military standard is approved for use by all Departments and Agencies of the Department of Defense. Selection for all new engineering and design applications and for repetitive use shall be made from this document when applicable.

APPROVED 22 NOV 66 REVISED (B) FOR CHANGES SEE PAGES 1, 2 AND 3

FED SUP CLASS  
5340

## REQUIREMENTS

1. MATERIAL CORROSION RESISTANT STEEL IN ACCORDANCE WITH AMS 5504
2. FINISH HEAT TREATMENT AND CLEANING IN ACCORDANCE WITH AMS 2550.
3. HARDNESS ROCKWELL C30-38.
4. DIMENSIONING AND TOLERANCING DIMENSIONING AND TOLERANCING SHALL BE IN ACCORDANCE WITH ANSI Y14.5M.
5. TOLERANCES, UNLESS OTHERWISE SPECIFIED, TOLERANCES SHALL BE FOR LINEAR DIMENSION  $\pm .010$  ANGULAR DIMENSIONS  $\pm 5^\circ$
6. EDGES BREAK SHARP EDGES .003-.015 UNLESS OTHERWISE SPECIFIED.
7. PART NUMBER THE PART NUMBER SHALL CONSIST OF THE BASIC MS NUMBER FOLLOWED BY A DASH NUMBER FROM TABLE I

EXAMPLE MS9602-005

DASH NUMBER

BASIC MS NUMBER

MS9602-005 INDICATES - BRACKET, ANGLE,  $90^\circ$ , CRES, 190 BOLT, 438 LONG X 312 BOLT, 500 LONG

## NOTES.

1. ALL DIMENSIONS ARE IN INCHES
2. DO NOT USE UNASSIGNED PART NUMBER.
3. IN THE EVENT OF A CONFLICT BETWEEN THE TEXT OF THIS STANDARD AND THE REFERENCES CITED HEREIN, THE TEXT OF THIS STANDARD SHALL TAKE PRECEDENCE.
4. REFERENCED GOVERNMENT (OR NON-GOVERNMENT) DOCUMENTS OF THE ISSUE LISTED IN THAT ISSUE OF THE DEPARTMENT OF DEFENSE INDEX OF SPECIFICATIONS AND STANDARDS (DODISS) SPECIFIED IN THE SOLICITATION FORM A PART OF THIS STANDARD TO THE EXTENT SPECIFIED HEREIN.
5. THIS STANDARD WAS DEVELOPED COOPERATIVELY WITH THE ENGINE AND PROPELLER UTILITY PARTS COMMITTEE OF THE SAE.
6. AS AND AMS ARE SOCIETY OF AUTOMOTIVE ENGINEERS, INC PUBLICATIONS.
7. APPROXIMATE WEIGHT LB/100 =  $1.097 (A+B) + 187$ .

APPROVED 22 NOV 66 REVISED (B) FOR CHANGES SEE PAGES 1, 2 AND 3

PA NAVY-AS Other Cust	INTERNATIONAL INTEREST	TITLE BRACKET, ANGLE, $90^\circ$ , CRES, .190 x .312 BOLT	MILITARY STANDARD MS9602
AIR FORCE-11	PROCUREMENT SPECIFICATION NONE	SUPERSEDES MS9230	PAGE 3 OF 3

DD FORM 672-1 (COORDINATED)

PREVIOUS EDITIONS OF THIS FORM ARE OBSOLETE

5340-1826

USER ACTIVITIES

REVIEWER ACTIVITIES  
DLA-15

This military standard is approved for use by all Departments and Agencies of the Department of Defense. Selection for all new engineering and design applications and for repetitive use shall be made from this document when applicable.