

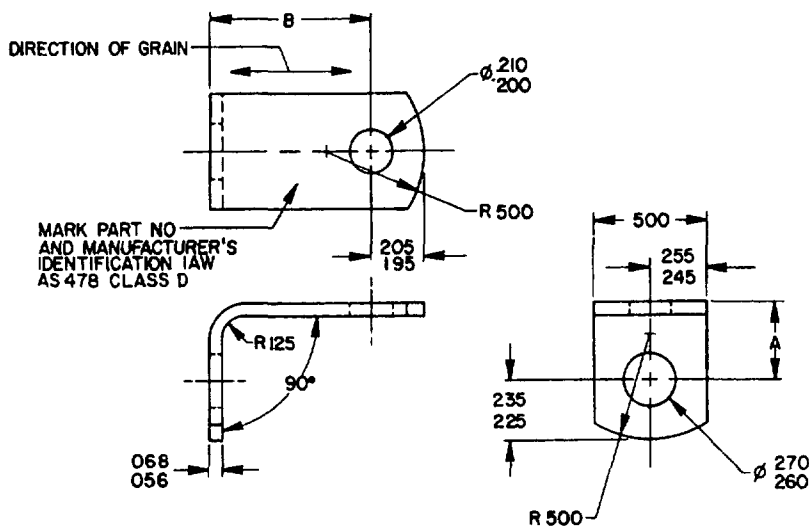
FED SUP CLASS
5340

TABLE I. DASH NUMBERS AND DIMENSIONS

B	A-LENGTH						
	500	.562	625	688	750	.812	875
LENGTH	DASH NUMBERS						
.438	-005 ^{1/}	-035 ^{1/}	-065 ^{1/}	-095 ^{1/}	-125 ^{1/}	-155	-185 ^{1/}
500	-006 ^{1/}	-036 ^{1/}	-066 ^{1/}	-096 ^{1/}	-126 ^{1/}	-156	-186 ^{1/}
.562	-007 ^{1/}	-037 ^{1/}	-067 ^{1/}	-097 ^{1/}	-127 ^{1/}	-157	-187 ^{1/}
.625	-008 ^{1/}	-038 ^{1/}	-068 ^{1/}	-098 ^{1/}	-128 ^{1/}	-158	-188 ^{1/}
.688	-009 ^{1/}	-039 ^{1/}	-069 ^{1/}	-099 ^{1/}	-129 ^{1/}	-159	-189 ^{1/}
.750	-010 ^{1/}	-040 ^{1/}	-070 ^{1/}	-100 ^{1/}	-130	-160	-190 ^{1/}
.812	-011 ^{1/}	-041 ^{1/}	-071 ^{1/}	-101 ^{1/}	-131	-161	-191 ^{1/}
.875	-012 ^{1/}	-042 ^{1/}	-072 ^{1/}	-102 ^{1/}	-132	-162	-192 ^{1/}
938	-013 ^{1/}	-043 ^{1/}	-073 ^{1/}	-103 ^{1/}	-133	-163	-193 ^{1/}
1.000	-014 ^{1/}	-044 ^{1/}	-074 ^{1/}	-104 ^{1/}	-134	-164	-194 ^{1/}
1.062	-015 ^{1/}	-045 ^{1/}	-075 ^{1/}	-105 ^{1/}	-135 ^{1/}	-165	-195 ^{1/}
1.125	-016 ^{1/}	-046 ^{1/}	-076 ^{1/}	-106 ^{1/}	-136 ^{1/}	-166	-196 ^{1/}
1.188	-017 ^{1/}	-047 ^{1/}	-077 ^{1/}	-107 ^{1/}	-137 ^{1/}	-167	-197 ^{1/}
1.250	-018 ^{1/}	-048 ^{1/}	-078 ^{1/}	-108 ^{1/}	-138 ^{1/}	-168	-198 ^{1/}
1.312	-019 ^{1/}	-049 ^{1/}	-079 ^{1/}	-109 ^{1/}	-139 ^{1/}	-169	-199 ^{1/}
1.375	-020 ^{1/}	-050 ^{1/}	-080 ^{1/}	-110 ^{1/}	-140 ^{1/}	-170	-200 ^{1/}
1.438	-021 ^{1/}	-051 ^{1/}	-081 ^{1/}	-111 ^{1/}	-141 ^{1/}	-171	-201 ^{1/}
1.500	-022 ^{1/}	-052 ^{1/}	-082 ^{1/}	-112 ^{1/}	-142 ^{1/}	-172	-202 ^{1/}

^{1/} PREFERRED SIZES

(B) ENTIRE STANDARD REVISED

PA NAVY-AS Other Cont AIR FORCE-82	INTERNATIONAL INTEREST	TITLE BRACKET, ANGLE, 90°, CRES, 190 x .250 BOLT	MILITARY STANDARD MS 9601
PROCUREMENT SPECIFICATION NONE	SUPERSEDES MS 9229	PAGE 1 OF 3	

DISTRIBUTION STATEMENT A Approved for public release; distribution is unlimited
This military standard is approved for use by all Departments and Agencies of the Department of Defense
No restriction for all new engineering and design applications and for repetitive use shall be made from this document when applicable

USER ACTIVITIES

REVIEWER ACTIVITIES
DLA - IS

AMSC N/A

DD FORM 672-1 (COORDINATED)

PRESERVE IN SET FOR REUSE

5340-1750

APPROVED 22 NOV 66 REVISED (B) 18 JUN 87

FED SUP CLASS
5340

TABLE I DASH NUMBERS AND DIMENSIONS - CONTINUED

B LENGTH	A-LENGTH			
	.938	1.000	1.125	1.250
	DASH NUMBERS			
.438	-215	-245 ^{1/}	-305 ^{1/}	-365 ^{1/}
.500	-216	-246 ^{1/}	-306 ^{1/}	-366 ^{1/}
.562	-217	-247 ^{1/}	-307 ^{1/}	-367 ^{1/}
.625	-218	-248 ^{1/}	-308 ^{1/}	-368 ^{1/}
.688	-219	-249 ^{1/}	-309 ^{1/}	-369 ^{1/}
.750	-220	-250 ^{1/}	-310 ^{1/}	-370 ^{1/}
.812	-221	-251 ^{1/}	-311 ^{1/}	-371 ^{1/}
.875	-222	-252 ^{1/}	-312 ^{1/}	-372 ^{1/}
.938	-223	-253 ^{1/}	-313 ^{1/}	-373 ^{1/}
1.000	-224	-254 ^{1/}	-314 ^{1/}	-374 ^{1/}
1.062	-225	-255 ^{1/}	-315 ^{1/}	-375 ^{1/}
1.125	-226	-256 ^{1/}	-316 ^{1/}	-376 ^{1/}
1.188	-227	-257 ^{1/}	-317 ^{1/}	-377 ^{1/}
1.250	-228	-258 ^{1/}	-318 ^{1/}	-378 ^{1/}
1.312	-229	-259 ^{1/}	-319 ^{1/}	-379 ^{1/}
1.375	-230	-260 ^{1/}	-320 ^{1/}	-380 ^{1/}
1.438	-231	-261 ^{1/}	-321 ^{1/}	-381 ^{1/}
1.500	-232	-262 ^{1/1}	-322 ^{1/}	-382 ^{1/}

^{1/} PREFERRED SIZES

TABLE I DASH NUMBERS AND DIMENSIONS - CONTINUED

B LENGTH	A-LENGTH				
	1.375	1.500	1.625	1.750	1.875
	DASH NUMBERS				
.438	-425 ^{1/}	-485 ^{1/}	-545 ^{1/}	-605 ^{1/}	-665 ^{1/}
.500	-426 ^{1/}	-486 ^{1/}	-546 ^{1/}	-606 ^{1/}	-666 ^{1/}
.562	-427 ^{1/}	-487 ^{1/}	-547 ^{1/}	-607 ^{1/}	-667 ^{1/}
.625	-428 ^{1/}	-488 ^{1/}	-548 ^{1/}	-608 ^{1/}	-668 ^{1/}
.688	-429 ^{1/}	-489 ^{1/}	-549 ^{1/}	-609 ^{1/}	-669 ^{1/}
.750	-430 ^{1/}	-490 ^{1/}	-550 ^{1/}	-610 ^{1/}	-670 ^{1/}
.812	-431 ^{1/}	-491 ^{1/}	-551 ^{1/}	-611 ^{1/}	-671 ^{1/}
.875	-432 ^{1/}	-492 ^{1/}	-552 ^{1/}	-612 ^{1/}	-672 ^{1/}
.938	-433 ^{1/}	-493 ^{1/}	-553 ^{1/}	-613 ^{1/}	-673 ^{1/}
1.000	-434 ^{1/}	-494 ^{1/}	-554 ^{1/}	-614 ^{1/}	-674 ^{1/}
1.062	-435 ^{1/}	-495 ^{1/}	-555 ^{1/}	-615 ^{1/}	-675 ^{1/}
1.125	-436 ^{1/}	-496 ^{1/}	-556 ^{1/}	-616 ^{1/}	-676 ^{1/}
1.188	-437 ^{1/}	-497 ^{1/}	-557 ^{1/}	-617 ^{1/}	-677 ^{1/}
1.250	-438 ^{1/}	-498 ^{1/}	-558 ^{1/}	-618 ^{1/}	-678 ^{1/}
1.312	-439 ^{1/}	-499 ^{1/}	-559 ^{1/}	-619 ^{1/}	-679 ^{1/}
1.688	-440 ^{1/}	-500 ^{1/}	-560 ^{1/}	-620 ^{1/}	-680 ^{1/}
1.750	-441 ^{1/}	-501 ^{1/}	-561 ^{1/}	-621 ^{1/}	-681 ^{1/}
1.875	-442 ^{1/}	-502 ^{1/}	-562 ^{1/}	-622 ^{1/}	-682 ^{1/}

^{1/} PREFERRED SIZES

PA NAVY-AS Other Cust AIR FORCE-82	INTERNATIONAL INTEREST	TITLE BRACKET, ANGLE, 90°, CRES, 190 x .250 BOLT	MILITARY STANDARD MS 9601
PROCUREMENT SPECIFICATION NONE	SUPERSEDES MS 9229	PAGE 2	OF 3

USER ACTIVITIES

REVIEWER ACTIVITIES

DLA-1S

This military standard is approved for use by all Departments and Agencies of the Department of Defense. Selection for all new engineering and design applications and for repetitive use shall be made from this document when applicable.

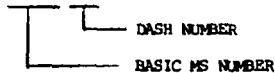
APPROVED 22 NOV 66 REVISED (B) FOR CHANGES SEE PAGES 1, 2 AND 3

FED SUP CLASS
5340

REQUIREMENTS:

1. MATERIAL. CORROSION RESISTANT STEEL IN ACCORDANCE WITH AMS 5504
2. HEAT TREATMENT AND CLEANING. HEAT TREATMENT AND CLEANING SHALL BE IN ACCORDANCE WITH AMS 2550.
3. HARDNESS. 30-38 HRC.
4. DIMENSIONING AND TOLERANCING. DIMENSIONING AND TOLERANCING SHALL BE IN ACCORDANCE WITH ANSI Y14.5M.
5. TOLERANCES. UNLESS OTHERWISE SPECIFIED, TOLERANCES SHALL BE FOR LINEAR DIMENSION $\pm .010$ ANGULAR DIMENSIONS $\pm 5^\circ$.
6. PART NUMBER. THE PART NUMBER SHALL CONSIST OF THE BASIC MS NUMBER FOLLOWED BY A DASH NUMBER FROM TABLE I.

EXAMPLE MS9601-005

MS9601-005 INDICATES - BRACKET, ANGLE, 90° , CRES, .190 X .250 BOLT, LENGTH A, 500, LENGTH B, 438.

NOTES.

1. ALL DIMENSIONS ARE IN INCHES.
2. DO NOT USE UNASSIGNED DASH NUMBERS
3. REMOVE BURRS AND BREAK SHARP EDGES
4. APPROXIMATE WEIGHT LB/100 = $.877 (A+B) + .145$.
5. IN THE EVENT OF A CONFLICT BETWEEN THE TEXT OF THIS STANDARD AND THE REFERENCES CITED HEREIN, THE TEXT OF THIS STANDARD SHALL TAKE PRECEDENCE.
6. REFERENCED GOVERNMENT (OR NON-GOVERNMENT) DOCUMENTS OF THE ISSUE LISTED IN THAT ISSUE OF THE DEPARTMENT OF DEFENSE INDEX OF SPECIFICATIONS AND STANDARDS (DODISS) SPECIFIED IN THE SOLICITATION FORM A PART OF THIS STANDARD TO THE EXTENT SPECIFIED HEREIN.
7. AS AND AMS ARE SOCIETY OF AUTOMOTIVE ENGINEERS, INC. PUBLICATIONS.
8. THIS STANDARD WAS DEVELOPED COOPERATIVELY WITH THE ENGINE AND PROPELLER UTILITY PARTS COMMITTEE OF THE SAE.

USER ACTIVITIES

REVIEWER ACTIVITIES
DLA -IS

This military standard is approved for use by all Departments and Agencies of the Department of Defense. Selection for all new engineering and design applications and for repetitive use shall be made from this document when applicable.

APPROVED 22 NOV 66 REVISED (B) FOR CHANGES SEE PAGES 1, 2 AND 3

PA NAVY-AS Other Cust AIR FORCE-82	INTERNATIONAL INTEREST	TITLE BRACKET, ANGLE, 90° , CRES, .190 x .250 BOLT	MILITARY STANDARD MS9601
PROCUREMENT SPECIFICATION NONE	SUPERSEDES MS9229	PAGE 3	OF 3