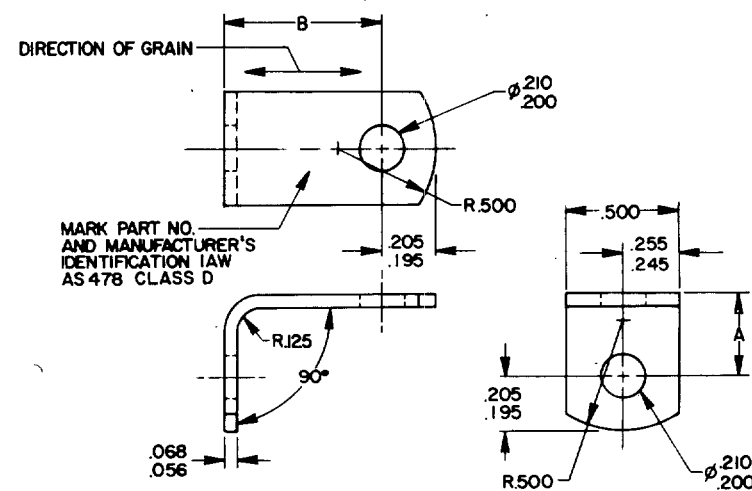


054920

FED. SUP CLASS
5340

TABLE I. DASH NUMBERS AND DIMENSIONS

		A-LENGTH					
		.438	.500	.562	.625	.688	.750
B							
LENGTH		DASH NUMBERS					
.438	-005 $\frac{1}{2}$						
.500	-006 $\frac{1}{2}$	-046 $\frac{1}{2}$					
.562	-007 $\frac{1}{2}$	-047 $\frac{1}{2}$	-087 $\frac{1}{2}$				
.625	-008 $\frac{1}{2}$	-048 $\frac{3}{4}$	-088 $\frac{1}{2}$	-128 $\frac{1}{2}$			
.688	-009 $\frac{1}{2}$	-049 $\frac{3}{4}$	-089 $\frac{1}{2}$	-129 $\frac{1}{2}$	-169 $\frac{1}{2}$		
.750	-010 $\frac{1}{2}$	-050 $\frac{1}{2}$	-090 $\frac{1}{2}$	-130 $\frac{1}{2}$	-170 $\frac{1}{2}$	-210 $\frac{1}{2}$	
.812	-011	-051	-091	-131	-171	-211	
.875	-012 $\frac{1}{2}$	-052 $\frac{1}{2}$	-092 $\frac{1}{2}$	-132 $\frac{1}{2}$	-172 $\frac{1}{2}$	-212 $\frac{1}{2}$	
.938	-013	-053	-093	-133	-173	-213	
1.000	-014 $\frac{1}{2}$	-054 $\frac{1}{2}$	-094 $\frac{1}{2}$	-134 $\frac{1}{2}$	-174 $\frac{1}{2}$	-214 $\frac{1}{2}$	
1.062	-015	-055	-095	-135	-175	-215	
1.125	-016 $\frac{1}{2}$	-056 $\frac{1}{2}$	-096 $\frac{1}{2}$	-136 $\frac{1}{2}$	-176 $\frac{1}{2}$	-216 $\frac{1}{2}$	
1.188	-017	-057	-097	-137	-177	-217	
1.250	-018 $\frac{1}{2}$	-058 $\frac{1}{2}$	-098 $\frac{1}{2}$	-138 $\frac{1}{2}$	-178 $\frac{1}{2}$	-218 $\frac{1}{2}$	
1.312	-019	-059	-099	-139	-179	-219	
1.375	-020 $\frac{1}{2}$	-060 $\frac{1}{2}$	-100 $\frac{1}{2}$	-140 $\frac{1}{2}$	-180 $\frac{1}{2}$	-220 $\frac{1}{2}$	
1.438	-021	-061	-101	-141	-181	-221	
1.500	-022 $\frac{1}{2}$	-062 $\frac{1}{2}$	-102 $\frac{1}{2}$	-142 $\frac{1}{2}$	-182 $\frac{1}{2}$	-222 $\frac{1}{2}$	
1.562	-023	-063	-103	-143	-183	-223	
1.625	-024 $\frac{3}{4}$	-064 $\frac{3}{4}$	-104 $\frac{3}{4}$	-144 $\frac{3}{4}$	-184 $\frac{3}{4}$	-224 $\frac{3}{4}$	
1.688	-025	-065	-105	-145	-185	-225	
1.750	-026 $\frac{1}{2}$	-066 $\frac{1}{2}$	-106 $\frac{1}{2}$	-146 $\frac{1}{2}$	-186 $\frac{1}{2}$	-226 $\frac{1}{2}$	
1.875	-027 $\frac{1}{2}$	-067 $\frac{1}{2}$	-107 $\frac{1}{2}$	-147 $\frac{1}{2}$	-187	-227	

1/ PREFERRED SIZES

Ⓐ ENTIRE STANDARD REVISED

P.A. NAVY-AS Other: Cust AIR FORCE-82	INTERNATIONAL INTEREST	TITLE BRACKET, ANGLE, 90°, STEEL, .190 BOLT	MILITARY STANDARD	
			MS9596	
PROCUREMENT SPECIFICATION NONE	SUPERSEDES: MS9165		PAGE 1	OF 2

DISTRIBUTION STATEMENT A. Approved for public release; distribution is unlimited.

This military standard is approved for use by all Departments and Agencies of the Department of Defense. Selection for all new engineering and design applications and for repetitive use shall be made from this document when applicable.

REVIEWER ACTIVITIES:
DLA-1S

APPROVED 22 NOV 66 REVISED (A) 18 JUN 67

014819

FED. SUP CLASS
5340

TABLE I. DASH NUMBERS AND DIMENSIONS - CONTINUED

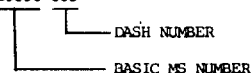
B LENGTH	A-LENGTH			
	.812	.875	.938	1.000
DASH NUMBERS				
.812	-251			
.875	-252	-292 ^{1/}		
.938	-253	-293	-333	
1.000	-254	-294 ^{1/}	-334	-374 ^{1/}
1.062	-255	-295	-335	-375
1.125	-256	-296 ^{1/}	-336	-376 ^{1/}
1.188	-257	-297	-337	-277
1.250	-258	-298 ^{1/}	-338	-278 ^{1/}
1.312	-259	-299	-339	-379
1.375	-260	-300 ^{1/}	-340	-380 ^{1/}
1.438	-261	-301	-341	-381
1.500	-262	-302 ^{1/}	-342	-382 ^{1/}
1.562	-263	-303	-343	-383
1.625	-264	-304 ^{1/}	-344	-384 ^{1/}
1.688	-265	-305	-345	-385
1.750	-266	-306 ^{1/}	-346	-386 ^{1/}
1.875	-267	-307 ^{1/}	-347	-387

^{1/} PREFERRED SIZES

REQUIREMENTS:

1. MATERIAL. STEEL IN ACCORDANCE WITH AMS 6350 HARDEN (OIL QUENCH) AND TEMPER TO 32-38HRC.
2. FINISH. CADMIUM PLATE IN ACCORDANCE WITH AMS 2400. DIMENSIONS SPECIFIED ARE AFTER PLATING.
3. DIMENSIONING AND TOLERANCING. DIMENSIONING AND TOLERANCING SHALL BE IN ACCORDANCE WITH ANSI Y14.5M.
4. TOLERANCES. UNLESS OTHERWISE SPECIFIED, TOLERANCES SHALL BE FOR LINEAR DIMENSION $\pm .010$ ANGULAR DIMENSIONS $\pm 5^\circ$.
5. PART NUMBER. THE PART NUMBER SHALL CONSIST OF THE BASIC MS NUMBER FOLLOWED BY A DASH NUMBER FROM TABLE I.

EXAMPLE: MS9596-005



MS9596-005 INDICATES - BRACKET, ANGLE, 90°, STEEL, .190 BOLT, LENGTH A, .438, LENGTH B, .438.

NOTES:

1. ALL DIMENSIONS ARE IN INCHES.
2. DO NOT USE UNASSIGNED DASH NUMBERS.
3. REMOVE BURRS AND BREAK SHARP EDGES.
4. APPROXIMATE WEIGHT LB/100 = $.877 (A+B) + .157$.
5. IN THE EVENT OF A CONFLICT BETWEEN THE TEXT OF THIS STANDARD AND THE REFERENCES CITED HEREIN, THE TEXT OF THIS STANDARD SHALL TAKE PRECEDENCE.
6. REFERENCED GOVERNMENT (OR NON-GOVERNMENT) DOCUMENTS OF THE ISSUE LISTED IN THAT ISSUE OF THE DEPARTMENT OF DEFENSE INDEX OF SPECIFICATIONS AND STANDARDS (DODISS) SPECIFIED IN THE SOLICITATION FORM A PART OF THIS STANDARD TO THE EXTENT SPECIFIED HEREIN.
7. AS AND AMS ARE SOCIETY OF AUTOMOTIVE ENGINEERS, INC. PUBLICATIONS.
8. THIS STANDARD WAS DEVELOPED COOPERATIVELY WITH THE ENGINE AND PROPELLER UTILITY PARTS COMMITTEE OF THE SAE.

NAVY-AS Other Cust AIR FORCE-82	INTERNATIONAL INTEREST	TITLE BRACKET, ANGLE, 90°, STEEL, .190 BOLT	MILITARY STANDARD MS9596
PROCUREMENT SPECIFICATION NONE	SUPERSEDES: MS9165	PAGE 2 OF 2	

USER ACTIVITIES:

REVIEWER ACTIVITIES:
DLA - IS

This military standard is approved for use by all Departments and Agencies of the Department of Defense. Selection for all new engineering and design applications and for repetitive use shall be made from this document when applicable.

APPROVED 22 NOV 66 REVISED (A) FOR CHANGES SEE PAGES 1 AND 2