

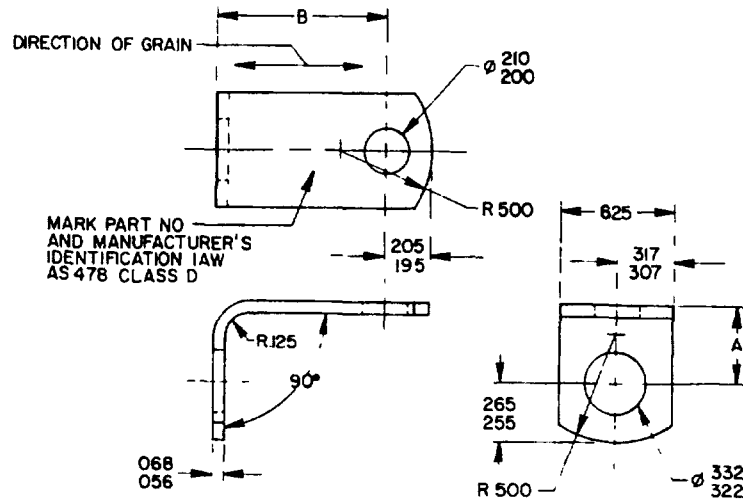
FED SUP CLASS
5340

TABLE DASH NUMBERS AND DIMENSIONS

B LENGTH	A-LENGTH						
	500	562	625	688	750	812	875
DASH NUMBERS							
438	-005 $\frac{1}{2}$	-035 $\frac{1}{2}$	-065 $\frac{1}{2}$	-095 $\frac{1}{2}$	-125 $\frac{1}{2}$	-155	-185 $\frac{1}{2}$
500	-006 $\frac{1}{2}$	-036 $\frac{1}{2}$	-066 $\frac{1}{2}$	-096 $\frac{1}{2}$	-126 $\frac{1}{2}$	-156	-186 $\frac{1}{2}$
562	-007 $\frac{1}{2}$	-037 $\frac{1}{2}$	-067 $\frac{1}{2}$	-097 $\frac{1}{2}$	-127 $\frac{1}{2}$	-157	-187 $\frac{1}{2}$
625	-008 $\frac{1}{2}$	-038 $\frac{1}{2}$	-068 $\frac{1}{2}$	-098 $\frac{1}{2}$	-128 $\frac{1}{2}$	-158	-188 $\frac{1}{2}$
688	-009 $\frac{1}{2}$	-039 $\frac{1}{2}$	-069 $\frac{1}{2}$	-099 $\frac{1}{2}$	-129 $\frac{1}{2}$	-159	-189 $\frac{1}{2}$
750	-010 $\frac{1}{2}$	-040 $\frac{1}{2}$	-071 $\frac{1}{2}$	-100 $\frac{1}{2}$	-130 $\frac{1}{2}$	-160	-190 $\frac{1}{2}$
812	-011 $\frac{1}{2}$	-041 $\frac{1}{2}$	-072 $\frac{1}{2}$	-101 $\frac{1}{2}$	-131 $\frac{1}{2}$	-161	-191 $\frac{1}{2}$
875	-012 $\frac{1}{2}$	-042 $\frac{1}{2}$	-073 $\frac{1}{2}$	-102 $\frac{1}{2}$	-132 $\frac{1}{2}$	-162	-192 $\frac{1}{2}$
938	-013 $\frac{1}{2}$	-043 $\frac{1}{2}$	-074 $\frac{1}{2}$	-103 $\frac{1}{2}$	-133 $\frac{1}{2}$	-163	-193 $\frac{1}{2}$
1 000	-014 $\frac{1}{2}$	-044 $\frac{1}{2}$	-075 $\frac{1}{2}$	-104 $\frac{1}{2}$	-134 $\frac{1}{2}$	-164	-194 $\frac{1}{2}$
1 062	-015 $\frac{1}{2}$	-045 $\frac{1}{2}$	-076 $\frac{1}{2}$	-105 $\frac{1}{2}$	-135 $\frac{1}{2}$	-165	-195 $\frac{1}{2}$
1 125	-016 $\frac{1}{2}$	-046 $\frac{1}{2}$	-077 $\frac{1}{2}$	-106 $\frac{1}{2}$	-136 $\frac{1}{2}$	-166 $\frac{1}{2}$	-196 $\frac{1}{2}$
1 188	-017 $\frac{1}{2}$	-047 $\frac{1}{2}$	-078 $\frac{1}{2}$	-107 $\frac{1}{2}$	-137 $\frac{1}{2}$	-167	-197 $\frac{1}{2}$
1 250	-018 $\frac{1}{2}$	-048 $\frac{1}{2}$	-079 $\frac{1}{2}$	-108 $\frac{1}{2}$	-138 $\frac{1}{2}$	-168 $\frac{1}{2}$	-198 $\frac{1}{2}$
1 312	-019 $\frac{1}{2}$	-049 $\frac{1}{2}$	-080 $\frac{1}{2}$	-109 $\frac{1}{2}$	-139 $\frac{1}{2}$	-169	-199 $\frac{1}{2}$
1 375	-020 $\frac{1}{2}$	-050 $\frac{1}{2}$	-081 $\frac{1}{2}$	-110 $\frac{1}{2}$	-140 $\frac{1}{2}$	-170 $\frac{1}{2}$	-200 $\frac{1}{2}$
1 438	-021 $\frac{1}{2}$	-051 $\frac{1}{2}$	-082 $\frac{1}{2}$	-111 $\frac{1}{2}$	-141 $\frac{1}{2}$	-171 $\frac{1}{2}$	-201 $\frac{1}{2}$
1 500	-022 $\frac{1}{2}$	-052 $\frac{1}{2}$	-083 $\frac{1}{2}$	-112 $\frac{1}{2}$	-142 $\frac{1}{2}$	-172 $\frac{1}{2}$	-202 $\frac{1}{2}$

1/ PREFERRED SIZES

A ENTIRE STANDARD REVISED

PA NAVY-AS Other Cust AIR FORCE-82	INTERNATIONAL INTEREST	TITLE BRACKET, ANGLE, 90°, CRES, 190 x 312 BOLT	MILITARY STANDARD MS9594
PROCUREMENT SPECIFICATION NONE	SUPERSEDES MS9103	PAGE 1	OF 3

UNR ACTIVITIES

REVIEWER ACTIVITIES
DLA - IS

DISTRIBUTION STATEMENT A Approved for public release; distribution is unlimited
This military standard is approved for use by all Departments and Agencies of the Department of Defense
No restriction for all new engineering and design applications and for repetitive use shall be made from this document when applicable

A 18 JUN 87

REVISED

22 NOV 66

APPROVED

AMSC N/A

DD 672-1 COORDINATED

5340-1747

C34018

FED SUP CLASS
5340

TABLE I DASH NUMBERS AND DIMENSIONS - CONTINUED

B LENGTH	A-LENGTH			
	.938	1.000	1.125	1.250
DASH NUMBERS				
.438	-215	-245 ^{1/}	-305 ^{1/}	-365 ^{1/}
.500	-216	-246 ^{1/}	-306 ^{1/}	-366 ^{1/}
.562	-217	-247 ^{1/}	-307 ^{1/}	-367 ^{1/}
.625	-218	-248 ^{1/}	-308 ^{1/}	-368 ^{1/}
.688	-219	-249 ^{1/}	-309 ^{1/}	-369 ^{1/}
.750	-220	-250 ^{1/}	-310 ^{1/}	-370 ^{1/}
.812	-221	-251 ^{1/}	-311 ^{1/}	-371 ^{1/}
.875	-222	-252 ^{1/}	-312 ^{1/}	-372 ^{1/}
.938	-223	-253 ^{1/}	-313 ^{1/}	-373 ^{1/}
1.000	-224	-254 ^{1/}	-314 ^{1/}	-374 ^{1/}
1.062	-225	-255 ^{1/}	-315 ^{1/}	-375 ^{1/}
1.125	-226	-256 ^{1/}	-316 ^{1/}	-376 ^{1/}
1.188	-227	-257 ^{1/}	-317 ^{1/}	-377 ^{1/}
1.250	-228	-258 ^{1/}	-318 ^{1/}	-378 ^{1/}
1.312	-229	-259 ^{1/}	-319 ^{1/}	-379 ^{1/}
1.375	-230	-260 ^{1/}	-320 ^{1/}	-380 ^{1/}
1.438	-231	-261 ^{1/}	-321 ^{1/}	-381 ^{1/}
1.500	-232	-262 ^{1/}	-322 ^{1/}	-382 ^{1/}

^{1/} PREFERRED SIZES

TABLE I. DASH NUMBERS AND DIMENSIONS - CONTINUED

B LENGTH	A-LENGTH				
	1.375	1.500	1.625	1.750	1.875
DASH NUMBERS					
.438	-425 ^{1/}	-485 ^{1/}	-545 ^{1/}	-605 ^{1/}	-665 ^{1/}
.500	-426 ^{1/}	-486 ^{1/}	-546 ^{1/}	-606 ^{1/}	-666 ^{1/}
.562	-427 ^{1/}	-487 ^{1/}	-547 ^{1/}	-607 ^{1/}	-667 ^{1/}
.625	-428 ^{1/}	-488 ^{1/}	-548 ^{1/}	-608 ^{1/}	-668 ^{1/}
.688	-429 ^{1/}	-489 ^{1/}	-549 ^{1/}	-609 ^{1/}	-669 ^{1/}
.750	-430 ^{1/}	-490 ^{1/}	-550 ^{1/}	-610 ^{1/}	-670 ^{1/}
.812	-431 ^{1/}	-491 ^{1/}	-551 ^{1/}	-611 ^{1/}	-671 ^{1/}
.875	-432 ^{1/}	-492 ^{1/}	-552 ^{1/}	-612 ^{1/}	-672 ^{1/}
.938	-433 ^{1/}	-493 ^{1/}	-553 ^{1/}	-613 ^{1/}	-673 ^{1/}
1.000	-434 ^{1/}	-494 ^{1/}	-554 ^{1/}	-614 ^{1/}	-674 ^{1/}
1.062	-435 ^{1/}	-495 ^{1/}	-555 ^{1/}	-615 ^{1/}	-675 ^{1/}
1.125	-436 ^{1/}	-496 ^{1/}	-556 ^{1/}	-616 ^{1/}	-676 ^{1/}
1.188	-437 ^{1/}	-497 ^{1/}	-557 ^{1/}	-617 ^{1/}	-677 ^{1/}
1.250	-438 ^{1/}	-498 ^{1/}	-558 ^{1/}	-618 ^{1/}	-678 ^{1/}
1.312	-439 ^{1/}	-499 ^{1/}	-559 ^{1/}	-619 ^{1/}	-679 ^{1/}
1.375	-440 ^{1/}	-500 ^{1/}	-560 ^{1/}	-620 ^{1/}	-680 ^{1/}
1.438	-441 ^{1/}	-501 ^{1/}	-561 ^{1/}	-621 ^{1/}	-681 ^{1/}
1.500	-442 ^{1/}	-502 ^{1/}	-562 ^{1/}	-622 ^{1/}	-682 ^{1/}

^{1/} PREFERRED SIZES

PA NAVY-AS Other Cust AIR FORCE-82	INTERNATIONAL INTEREST	TITLE BRACKET, ANGLE, 90°, CRES, .190 x .312 BOLT	MILITARY STANDARD MS9594
PROCUREMENT SPECIFICATION NONE	SUPERSEDES MS9103	PAGE 2 OF 3	

USER ACTIVITIES

REVIEWER ACTIVITIES
DLA - IS

This military standard is approved for use by all Departments and Agencies of the Department of Defense. Selection for all new engineering and design applications and for repetitive use shall be made from this document when applicable.

APPROVED 22 NOV 66 REVISED (A) FOR CHANGES SEE PAGES 1, 2 AND 3

FED SUP CLASS
5340

REQUIREMENTS

1. MATERIAL CORROSION RESISTANT STEEL IN ACCORDANCE WITH AMS 5710
2. DIMENSIONING AND TOLERANCING DIMENSIONING AND TOLERANCING SHALL BE IN ACCORDANCE WITH ANSI Y14.5M
3. TOLERANCES UNLESS OTHERWISE SPECIFIED, TOLERANCES SHALL BE FOR LINEAR DIMENSIONS $\pm .010$, ANGULAR DIMENSIONS $\pm 5^\circ$
4. PART NUMBER THE PART NUMBER SHALL CONSIST OF THE BASIC MS NUMBER FOLLOWED BY A DASH NUMBER FROM TABLE 1

EXAMPLE: MS9594-005

└── DASH NUMBER
└── BASIC MS NUMBER

MS9594-005 IN. LATES- BRACKET, ANGLE, 90°, CRES, 190 X 312 BOLT, LENGTH A, 500, LENGTH B, 438

NOTES

1. ALL DIMENSIONS ARE IN INCHES.
2. DO NOT USE UNASSIGNED DASH NUMBERS
3. REMOVE BURRS AND BREAK SHARP EDGES
4. APPROXIMATE WEIGHT LB/100 = 1.097 (A+B) + 187
5. IN THE EVENT OF A CONFLICT BETWEEN THE TEXT OF THIS STANDARD AND THE REFERENCES CITED HEREIN, THE TEXT OF THIS STANDARD SHALL TAKE PRECEDENCE
6. REFERENCED GOVERNMENT (OR NON-GOVERNMENT) DOCUMENTS OF THE ISSUE LISTED IN THAT ISSUE OF THE DEPARTMENT OF DEFENSE INDEX OF SPECIFICATIONS AND STANDARDS (DODISS) SPECIFIED IN THE SOLICITATION FORM A PART OF THIS STANDARD TO THE EXTENT SPECIFIED HEREIN
7. AS AND AMS ARE SOCIETY OF AUTOMOTIVE ENGINEERS, INC. PUBLICATIONS
8. THIS STANDARD WAS DEVELOPED COOPERATIVELY WITH THE ENGINE AND PROPELLER UTILITY PARTS COMMITTEE OF THE SAE

APPROVED 22 NOV 66 REVISED (A) FOR CHANGES SEE PAGES 1, 2 AND 3

PA NAVY-AS Other Cust AIR FORCE-82	INTERNATIONAL INTEREST	TITLE BRACKET, ANGLE, 90°, CRES, 190 x 312 BOLT	MILITARY STANDARD MS 9594
PROCUREMENT SPECIFICATION NONE	SUPERSEDES MS9103	PAGE 3	OF 3

DD FORM 1 MAY 72 672-1 (COORDINATED)

PRELIMINARY EDITION

5340-1747

USER ACTIVITIES

REVIEWER ACTIVITIES
DLA-1S

This military standard is approved for use by all Departments and Agencies of the Department of Defense. Selection for all new engineering and design applications and for repetitive use shall be made from this document when applicable.