

## USER ACTIVITIES

REVIEWER A YES  
AIR FORCE-82  
DLA-15

**DISTRIBUTION STATEMENT A** Approved for public release; distribution is unlimited.

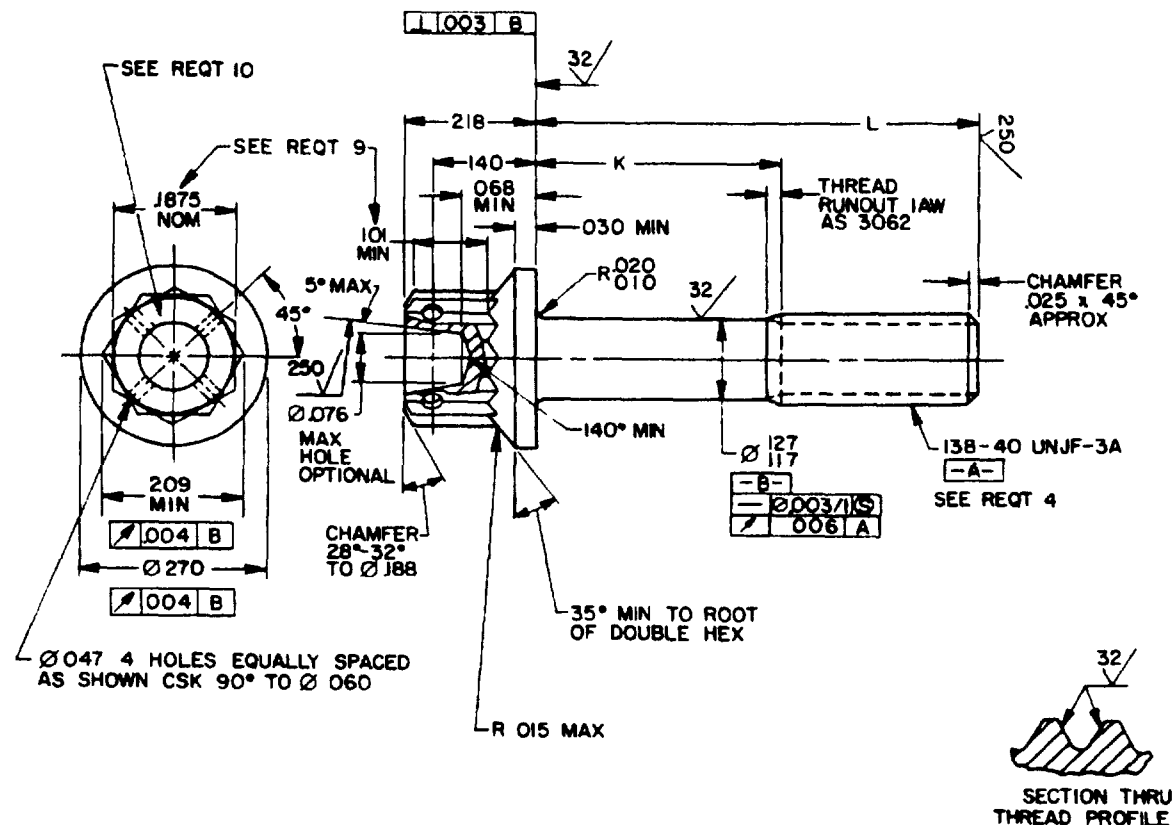


TABLE I. Dash numbers and dimensions

DASH NUMBER	L	K	APPROX WEIGHT LB/100	DASH NUMBER	L	K	APPROX WEIGHT LB/100
-01	.188	.058-.078	.275	-16	1.125	.539-.599	.605
-02	.250	.058-.078	.297	-17	1.188	.602-.662	.627
-03	.312	.058-.078	.318	-18	1.250	.664-.724	.649
-04	.375	.058-.078	.340	-19	1.312	.726-.786	.671
-05	.438	.058-.078	.363	-20	1.375	.789-.849	.693
-06	.500	.058-.078	.386	-21	1.438	.852-.912	.715
-07	.562	.058-.078	.406	-22	1.500	.914-.974	.737
-08	.625	.058-.099	.429	-23	1.562	.976-1.035	.759
-09	.688	.102-.162	.451	-24	1.625	1.039-1.099	.781
-10	.750	.164-.224	.473	-25	1.688	1.102-1.162	.803
-11	.812	.226-.286	.495	-26	1.750	1.164-1.224	.825
-12	.875	.289-.349	.517	-27	1.812	1.226-1.286	.847
-13	.938	.352-.412	.539	-28	1.875	1.289-1.349	.869
-14	1.000	.414-.474	.561	-29	1.938	1.352-1.412	.891
-15	1.062	.476-.536	.583	-30	2.000	1.414-1.474	.913

**④ ENTIRE STANDARD REDRAWN**

P A <b>NAVY - AS</b> Other Cust	INTERNATIONAL INTEREST	TITLE <b>SCREW, MACHINE-DOUBLE HEXAGON          EXTENDED WASHER HEAD, DRILLED,          PD SHANK, SILVER PLATED,          .138 - 40 UNJF - 3A</b>	<b>MILITARY STANDARD</b>
<b>ARMY - AV</b>			<b>MS9572</b>
PROCUREMENT SPECIFICATION <b>NONE</b>	SUPERSEDES	PAGE 1 OF 2	

APPROVED 16 DEC 65 REVISED (D) 30 SEPT 89

FED SUP CLASS  
5305

## REQUIREMENTS

1. MATERIAL. CORROSION AND HEAT RESISTANT STEEL IN ACCORDANCE WITH AMS 5731 (UNS S06286).
2. FLUORESCENT PENETRANT INSPECTION FLUORESCENT PENETRANT INSPECTION IN ACCORDANCE WITH AMS 2645 BEFORE PLATING.
3. FINISH SILVER PLATE IN ACCORDANCE WITH AMS 2411 .0002-.0006 THICK AT THREAD PD DIMENSIONS SPECIFIED ARE AFTER PLATING. PD MAY BE REDUCED .0012 MAXIMUM BEFORE PLATING.
4. THREADS. THREADS IN ACCORDANCE WITH MIL-S-8879 INCOMPLETE THREADS NOT TO ENTER FILLET.
5. MANUFACTURING. MANUFACTURE IN ACCORDANCE WITH AMS 7477.
6. DIMENSIONING AND TOLERANCING DIMENSIONING AND TOLERANCING SHALL BE IN ACCORDANCE WITH ANSI Y14.5M.
7. EDGES: BREAK SHARP EDGES .003-.015 UNLESS OTHERWISE SPECIFIED
8. SURFACE TEXTURE: SURFACE TEXTURE IN ACCORDANCE WITH ANSI/ASME B46.1 UNLESS OTHERWISE SPECIFIED, SURFACES TO BE 125 MICROINCHES EXCEPT UPSET HEAD
9. TOLERANCING UNLESS OTHERWISE SPECIFIED, TOLERANCES SHALL BE FOR LINEAR DIMENSIONS  $\pm .010$ , ANGULAR DIMENSIONS  $\pm 5^\circ$ .
10. WRENCHING CONFIGURATION WRENCHING CONFIGURATION IN ACCORDANCE WITH AS 870
11. MARKING. MARK PART NUMBER AND MANUFACTURER'S IDENTIFICATION IN ACCORDANCE WITH AS 476 CLASS A.
12. PART NUMBER: THE PART NUMBER SHALL CONSIST OF THE BASIC MS PART NUMBER FOLLOWED BY A DASH NUMBER FROM TABLE I

EXAMPLE: MS9572-01

DASH NUMBER

BASIC MS NUMBER

MS9572-01 INDICATES SCREW, MACHINE - DOUBLE HEXAGON EXTENDED WASHER HEAD, DRILLED, PD SHANK, AMS 5731, SILVER PLATED, .138-40 UNJF-3A X 188.

## NOTES:

1. ALL DIMENSIONS ARE IN INCHES.
2. DO NOT USE UNASSIGNED PART NUMBERS.
3. IN THE EVENT OF A CONFLICT BETWEEN IN THE TEXT OF THIS STANDARD AND THE REFERENCES CITED HEREIN, THE TEXT OF THIS STANDARD SHALL TAKE PRECEDENCE.
4. REFERENCED GOVERNMENT (OR NONGOVERNMENT) DOCUMENTS OF THE ISSUE LISTED IN THAT ISSUE OF THE DEPARTMENT OF DEFENSE INDEX OF SPECIFICATIONS AND STANDARDS (DoDISS) SPECIFIED IN THE SOLICITATION FORM A PART OF THIS STANDARD TO THE EXTENT SPECIFIED.
5. THIS STANDARD WAS DEVELOPED COOPERATIVELY WITH THE SAE AEROSPACE PROPULSION DIVISION.
6. AS AND AMS ARE SAE PUBLICATIONS.

PA NAVY - AS Other Cust ARMY - AV	INTERNATIONAL INTEREST	TITLE SCREW, MACHINE - DOUBLE HEXAGON EXTENDED WASHER HEAD, DRILLED, PD SHANK, SILVER PLATED, .138-40 UNJF-3A	MILITARY STANDARD MS9572
PROCUREMENT SPECIFICATION NONE	SUPERSEDES	PAGE 2	OF 2

USER ACTIVITIES

REVIEWER ACTIVITIES  
AIR FORCE - 82  
DLA - 15

This military standard is approved for use by all Departments and Agencies of the Department of Defense. Selection for all new, existing and designations and for repetitive use shall be made from this document when applicable.

APPROVED 16 DEC 65 REVISED ① FOR CHANGES SEE PAGES 1 AND 2