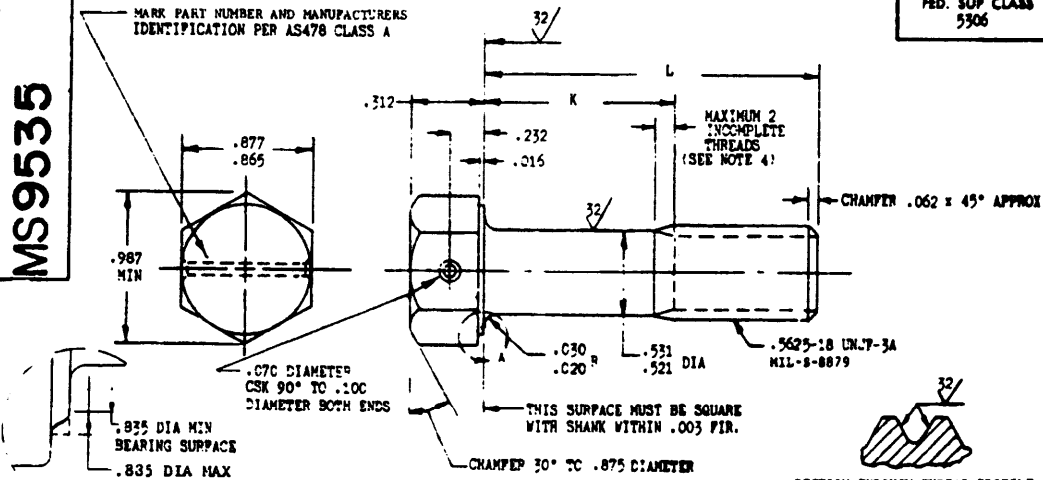


**MS9535**

MARK PART NUMBER AND MANUFACTURERS IDENTIFICATION PER AS478 CLASS A

FED. SUP CLASS  
5906VIEW A  
ENLARGED

SECTION THROUGH THREAD PROFILE

PART NUMBER	L	K	APPROX WEIGHT LB/100	PART NUMBER	L	K	APPROX WEIGHT LB/100
MS9535-04	.875	.113-.133	11.18	MS9535-31	3.250	1.815-1.875	25.73
MS9535-05	.938	.113-.133	11.56	MS9535-32	3.375	1.940-2.000	26.49
MS9535-06	1.000	.113-.133	11.94	MS9535-33	3.500	2.065-2.125	27.26
MS9535-07	1.062	.113-.133	12.32	MS9535-34	3.625	2.190-2.250	28.02
MS9535-08	1.125	.113-.133	12.70	MS9535-35	3.750	2.315-2.375	28.79
MS9535-09	1.188	.113-.133	13.08	MS9535-36	3.875	2.440-2.500	29.56
MS9535-10	1.250	.113-.133	13.47	MS9535-37	4.000	2.565-2.625	30.32
MS9535-11	1.312	.113-.133	13.85	MS9535-38	4.125	2.690-2.750	31.09
MS9535-12	1.375	.113-.133	14.23	MS9535-39	4.250	2.815-2.875	31.86
MS9535-13	1.438	.113-.133	14.62	MS9535-40	4.375	2.940-3.000	32.62
MS9535-14	1.500	.113-.133	15.00	MS9535-41	4.500	3.065-3.125	33.39
MS9535-15	1.562	.128-.168	15.38	MS9535-42	4.625	3.190-3.250	34.15
MS9535-16	1.625	.190-.250	15.77	MS9535-43	4.750	3.315-3.375	34.92
MS9535-17	1.688	.293-.313	16.15	MS9535-44	4.875	3.440-3.500	35.69
MS9535-18	1.750	.315-.375	16.53	MS9535-45	5.000	3.565-3.625	36.45
MS9535-19	1.812	.377-.437	16.91	MS9535-46	5.125	3.690-3.750	37.22
MS9535-20	1.875	.440-.500	17.30	MS9535-47	5.250	3.815-3.875	37.99
MS9535-21	2.000	.565-.625	18.06	MS9535-48	5.375	3.940-4.000	38.76
MS9535-22	2.125	.690-.750	18.83	MS9535-49	5.500	4.065-4.125	39.52
MS9535-23	2.250	.815-.875	19.60	MS9535-50	5.625	4.190-4.250	40.28
MS9535-24	2.375	.940-1.000	20.36	MS9535-51	5.750	4.315-4.375	41.05
MS9535-25	2.500	1.065-1.125	21.13	MS9535-52	5.875	4.440-4.500	41.82
MS9535-26	2.625	1.190-1.250	21.90	MS9535-53	6.000	4.565-4.625	42.58
MS9535-27	2.750	1.315-1.375	22.66				
MS9535-28	2.875	1.440-1.500	23.43				
MS9535-29	3.000	1.565-1.625	24.19				
MS9535-30	3.125	1.690-1.750	24.96				

- SHANK SHALL BE STRAIGHT WITHIN .002 PER INCH OF BOLT LENGTH.
- THE CONCENTRICITY OF THREAD PD IN RELATION TO THE SHANK SHALL BE WITHIN .006 FIR.
- THE CONCENTRICITY OF THE SHANK IN RELATION TO THE WASHER FACE DIAMETER AND HEXAGON SHALL BE WITHIN .026 FIR.
- INCOMPLETE THREADS NOT TO ENTER PILLET.
- MATERIAL: STEEL AMS 6322.
- HARDNESS: ROCKWELL C26-32.
- FINISH: CADMIUM PLATE PER AMS 240C. DIMENSIONS SPECIFIED ARE AFTER PLATING.
- MAGNETIC PARTICLE INSPECTION PER AIS 2640.
- MANUFACTURING SPECIFICATION: AMS 7452 EXCEPT HEAD MUST BE UPSET.
- SURFACE TEXTURE: USAS B46.1-1962. UNLESS OTHERWISE SPECIFIED SURFACES TO BE 125 MICROINCHES, EXCEPT HEXAGON.
- BREAK SHARP EDGES .003 - .015 UNLESS OTHERWISE SPECIFIED.
- DIMENSIONS IN INCHES. UNLESS OTHERWISE SPECIFIED, TOLERANCES: LINEAR DIMENSIONS  $\pm .010$ , ANGULAR DIMENSIONS  $\pm 9^\circ$ .
- DO NOT USE UNASSIGNED PART NUMBERS.

CERTAIN PROVISIONS OF THIS STANDARD ARE THE PROPERTY OF THE SOCIETY OF AUTOMOTIVE ENGINEERS, INC. AND ARE NOT TO BE REPRODUCED OR TRANSMITTED IN ANY FORM OR BY ANY MEANS, ELECTRONIC OR MECHANICAL, INCLUDING PHOTOCOPYING, RECORDING, OR BY ANY INFORMATION STORAGE AND RETRIEVAL SYSTEM, WITHOUT PERMISSION IN WRITING FROM THE SOCIETY OF AUTOMOTIVE ENGINEERS, INC. OR THE MILITARY STANDARDIZATION AUTHORITY. THIS STANDARD IS A MILITARY STANDARD AND IS NOT TO BE USED FOR OTHER PURPOSES WITHOUT THE EXPRESS WRITTEN PERMISSION OF THE MILITARY STANDARDIZATION AUTHORITY.

AS A AMS ARE SOCIETY OF AUTOMOTIVE ENGINEERS, INC. PUBLICATIONS.  
THIS STANDARD WAS DEVELOPED COOPERATIVELY WITH THE MILITARY SERVICES BY THE S.A.E. AEROSPACE PROPULSION DIVISION.

P. N. MS9535	INTERNATIONAL DIFFERENT	TITLE BOLT, MACHINE-STEEL AMS 6322, CADMIUM PLATE, DRILLED, 1 HOLE, HEXAGON HEAD, .5625-18 UNJ-3A	MILITARY STANDARD <b>MS9535</b>
Other Cost NAT-AS ARMY-AV			
PROCUREMENT SPECIFICATION MS9535	SUPERSEDES:		SHEET 1 OF 1

DD FORM 672-1 (Continued)

PREVIOUS EDITIONS OF THIS FORM ARE OBSOLETE

U.S. GOVERNMENT PRINTING OFFICE: 1968-301-516 4202

This military standard has been approved by the Department of Defense and is mandatory for use by all departments and agencies of the Department of Defense. Selection for all new engineering and design applications and for repetitive use shall be made from this document.

Interim activities:

APPROVED 2 Feb 1968