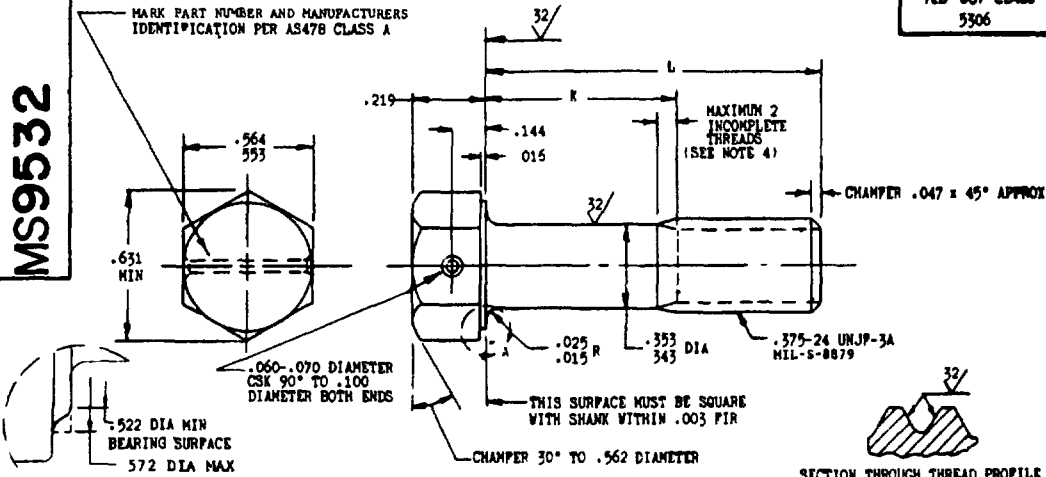


MS9532

MARK PART NUMBER AND MANUFACTURERS IDENTIFICATION PER AS478 CLASS A

FED SUP CLASS
5306VIEW A
ENLARGED

SECTION THROUGH THREAD PROFILE

| PART NUMBER | L | K | APPROX WEIGHT LB/100 | PART NUMBER | L | K | APPROX WEIGHT LB/100 |
|-------------|-------|-------------|----------------------|-------------|-------|-------------|----------------------|
| MS9532-04 | .625 | .088-.108 | 3.35 | MS9532-31 | 2.875 | 1.815-1.875 | 9.41 |
| MS9532-05 | .688 | .088-.108 | 3.62 | MS9532-32 | 3.000 | 1.940-2.000 | 9.74 |
| MS9532-06 | .750 | .088-.108 | 3.69 | MS9532-33 | 3.125 | 2.065-2.125 | 10.08 |
| MS9532-07 | .812 | .088-.108 | 3.86 | MS9532-34 | 3.250 | 2.190-2.250 | 10.41 |
| MS9532-08 | .875 | .088-.108 | 4.03 | MS9532-35 | 3.375 | 2.315-2.375 | 10.75 |
| MS9532-09 | .938 | .088-.108 | 4.20 | MS9532-36 | 3.500 | 2.440-2.500 | 11.09 |
| MS9532-10 | 1.000 | .088-.108 | 4.37 | MS9532-37 | 3.625 | 2.565-2.625 | 11.42 |
| MS9532-11 | 1.062 | .088-.108 | 4.53 | MS9532-38 | 3.750 | 2.690-2.750 | 11.76 |
| MS9532-12 | 1.125 | .088-.125 | 4.70 | MS9532-39 | 3.875 | 2.815-2.875 | 12.09 |
| MS9532-13 | 1.188 | .128-.188 | 4.87 | MS9532-40 | 4.000 | 2.940-3.000 | 12.43 |
| MS9532-14 | 1.250 | .190-.250 | 5.04 | MS9532-41 | 4.125 | 3.065-3.125 | 12.77 |
| MS9532-15 | 1.312 | .252-.312 | 5.21 | MS9532-42 | 4.250 | 3.190-3.250 | 13.10 |
| MS9532-16 | 1.375 | .315-.375 | 5.37 | MS9532-43 | 4.375 | 3.315-3.375 | 13.44 |
| MS9532-17 | 1.438 | .378-.438 | 5.54 | MS9532-44 | 4.500 | 3.440-3.500 | 13.77 |
| MS9532-18 | 1.500 | .440-.500 | 5.71 | MS9532-45 | 4.625 | 3.565-3.625 | 14.11 |
| MS9532-19 | 1.562 | .502-.562 | 5.88 | MS9532-46 | 4.750 | 3.690-3.750 | 14.45 |
| MS9532-20 | 1.625 | .565-.625 | 6.05 | MS9532-47 | 4.875 | 3.815-3.875 | 14.78 |
| MS9532-21 | 1.688 | .628-.688 | 6.21 | MS9532-48 | 5.000 | 3.940-4.000 | 15.12 |
| MS9532-22 | 1.750 | .690-.750 | 6.38 | MS9532-49 | 5.125 | 4.065-4.125 | 15.45 |
| MS9532-23 | 1.812 | .815-.875 | 6.52 | MS9532-50 | 5.250 | 4.190-4.250 | 15.79 |
| MS9532-24 | 2.000 | .940-1.000 | 7.05 | MS9532-51 | 5.375 | 4.315-4.375 | 16.13 |
| MS9532-25 | 2.125 | 1.065-1.125 | 7.39 | MS9532-52 | 5.500 | 4.440-4.500 | 16.46 |
| MS9532-26 | 2.250 | 1.190-1.250 | 7.73 | MS9532-53 | 5.625 | 4.565-4.625 | 16.80 |
| MS9532-27 | 2.375 | 1.315-1.375 | 8.06 | MS9532-54 | 5.750 | 4.690-4.750 | 17.13 |
| MS9532-28 | 2.500 | 1.440-1.500 | 8.40 | MS9532-55 | 5.875 | 4.815-4.875 | 17.47 |
| MS9532-29 | 2.625 | 1.565-1.625 | 8.73 | | | | |
| MS9532-30 | 2.750 | 1.690-1.750 | 9.07 | MS9532-56 | 6.000 | 4.940-5.000 | 17.81 |

- SHANK SHALL BE STRAIGHT WITHIN .0025 PER INCH OF BOLT LENGTH.
- THE CONCENTRICITY OF THREAD PD IN RELATION TO THE SHANK SHALL BE WITHIN .006 FIR.
- THE CONCENTRICITY OF THE SHANK IN RELATION TO THE WASHER FACE DIAMETER AND HEXAGON SHALL BE WITHIN .017 FIR.
- INCOMPLETE THREADS NOT TO ENTER PILLAT.
- MATERIAL STEEL AMS 6322.
- HARDNESS ROCKWELL C26-32.
- FINISH CADMIUM PLATE PER AMS 2400. DIMENSIONS SPECIFIED ARE AFTER PLATING.
- MAGNETIC PARTICLE INSPECTION PER AMS 2440.
- MANUFACTURING SPECIFICATION AMS 7452 EXCEPT HEAD MUST BE UPSET.
- SURFACE TEXTURE USAS 846.1-1962 UNLESS OTHERWISE SPECIFIED SURFACES TO BE 125 MICROINCHES, EXCEPT HEXAGON.
- BREAK SHARP EDGES .003 - .015 UNLESS OTHERWISE SPECIFIED.
- DIMENSIONS IN INCHES UNLESS OTHERWISE SPECIFIED. TOLERANCES LINEAR DIMENSIONS ± .010, ANGULAR DIMENSIONS ± 5°.
- DO NOT USE UNASSIGNED PART NUMBERS.

CERTAIN PROVISIONS OF THIS STANDARD ARE THE SUBJECT OF INTERNATIONAL AGREEMENT AS TO AIR 27.2 WHEN REVISION OR CANCELLATION OF THIS STANDARD IS PROPOSED, THE NATIONAL STANDARDS WILL INFORM THEIR RESPECTIVE DEPARTMENTAL STANDARDIZATION OFFICES SO THAT APPROPRIATE ACTION MAY BE TAKEN REGARDING THE INTERNATIONAL AGREEMENT CONCERNED.

AS & AMS ARE SOCIETY OF AUTOMOTIVE ENGINEERS, INC. PUBLICATIONS.
THIS STANDARD WAS DEVELOPED COOPERATIVELY WITH THE MILITARY SERVICES BY THE S & A AEROSPACE PROPULSION DIVISION.

| | | | |
|----------------------------------|---------------------------|---|------------------------------------|
| P.A. USAF-1 | INTERNATIONAL INTEREST | TITLE BOLT, MACHINE STEEL AMS 6322, CADMIUM PLATE, DRILLED, 1 HOLE, HEXAGON HEAD 375-24 UNJF-3A | MILITARY STANDARD MS9532 |
| Other Cost AVY-AS ARMY-AV | | | |
| PROCUREMENT SPECIFICATION 101 | SUPERSEDES. | | SHEET 1 OF 1 |

DD FORM 672-1 (1-67)

PREVIOUS EDITIONS OF THIS FORM ARE OBSOLETE

☆ U.S. GOVERNMENT PRINTING OFFICE: 1963 510 4205

This military standard has been approved by the Department of Defense and is mandatory for use by all Departments and Agencies of the Department of Defense. Selection for all new engineering and design applications and for repetitive use shall be made from this document.

reviewer activities

APPROVED 2 Feb 1968