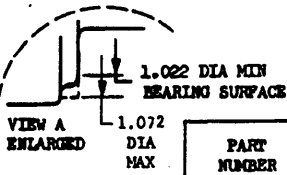
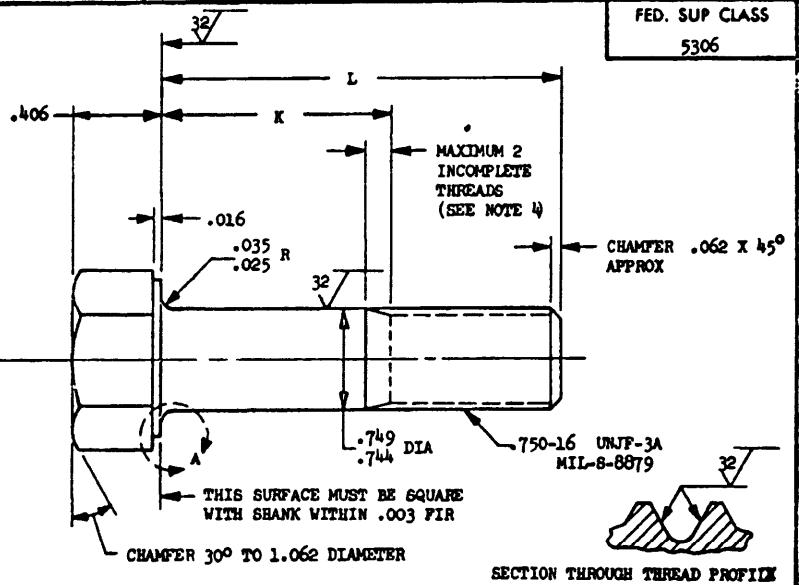
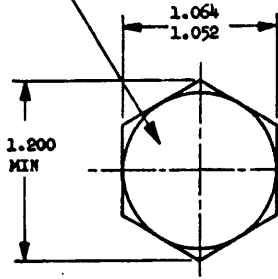


FED. SUP CLASS  
5306

**MS9497**

MARK PART NUMBER AND MANUFACTURERS IDENTIFICATION PER AS 478 CLASS A



CHAMFER 30° TO 1.062 DIAMETER

SECTION THROUGH THREAD PROFILE

User activities:

Review activities:  
AIR FORCE-82  
DLA-1S

This military standard is approved for use by all Departments and Agencies of the Department of Defense. Action for all new engineering and design applications and for repetitive use shall be made from this document when applicable.

PART NUMBER	L	K	APPROX WEIGHT LB/100	PART NUMBER	L	K	APPROX WEIGHT LB/100
MS9497-06	1.250	.129-.149	26.90	MS9497-31	3.625	1.815-1.875	56.63
MS9497-07	1.312	.129-.149	27.68	MS9497-32	3.750	1.940-2.000	58.20
MS9497-08	1.375	.129-.149	28.47	MS9497-33	3.875	2.065-2.125	59.76
MS9497-09	1.438	.129-.149	29.25	MS9497-34	4.000	2.190-2.250	61.33
MS9497-10	1.500	.129-.149	30.03	MS9497-35	4.125	2.315-2.375	62.89
MS9497-11	1.562	.129-.149	30.81	MS9497-36	4.250	2.440-2.500	64.46
MS9497-12	1.625	.129-.149	31.60	MS9497-37	4.375	2.565-2.625	66.02
MS9497-13	1.688	.129-.149	32.38	MS9497-38	4.500	2.690-2.750	67.59
MS9497-14	1.750	.129-.149	33.16	MS9497-39	4.625	2.815-2.875	69.15
MS9497-15	1.812	.129-.149	33.95	MS9497-40	4.750	2.940-3.000	70.72
MS9497-16	1.875	.129-.149	34.73	MS9497-41	4.875	3.065-3.125	72.28
MS9497-17	1.938	.129-.188	35.51	MS9497-42	5.000	3.190-3.250	73.85
MS9497-18	2.000	.190-.250	36.29	MS9497-43	5.125	3.315-3.375	75.41
MS9497-19	2.125	.315-.375	37.86	MS9497-44	5.250	3.440-3.500	76.98
MS9497-20	2.250	.440-.500	39.42	MS9497-45	5.375	3.565-3.625	78.54
MS9497-21	2.375	.565-.625	40.99	MS9497-46	5.500	3.690-3.750	80.11
MS9497-22	2.500	.690-.750	42.55	MS9497-47	5.625	3.815-3.875	81.67
MS9497-23	2.625	.815-.875	44.12	MS9497-48	5.750	3.940-4.000	83.23
MS9497-24	2.750	.940-1.000	45.78	MS9497-49	5.875	4.065-4.125	84.80
MS9497-25	2.875	1.065-1.125	47.25	MS9497-50	6.000	4.190-4.250	86.36
MS9497-26	3.000	1.190-1.250	48.81				
MS9497-27	3.125	1.315-1.375	50.48				
MS9497-28	3.250	1.440-1.500	51.94				
MS9497-29	3.375	1.565-1.625	53.50				
MS9497-30	3.500	1.690-1.750	55.07				

- SHANK SHALL BE STRAIGHT WITHIN .002 TOTAL PER INCH OF BOLT LENGTH
- THE CONCENTRICITY OF THREAD PD IN RELATION TO THE SHANK SHALL BE WITHIN .006 FIR.
- THE CONCENTRICITY OF THE SHANK IN RELATION TO THE WASHER FACE DIAMETER AND HEXAGON SHALL BE WITHIN .032 FIR.
- INCOMPLETE THREADS NOT TO ENTER FILLET.
- MATERIAL: CORROSION AND HEAT RESISTANT STEEL AMS 5731. © REINSTATED 23 NOV 84
- MANUFACTURING SPECIFICATION: AMS 7477.
- FLUORESCENT PENETRANT INSPECTION PER AMS 2645.
- SURFACE TEXTURE: USAS B46.1-1962 UNLESS OTHERWISE SPECIFIED SURFACES TO BE 125 MICROINCHES EXCEPT HEXAGON
- BREAK SHARP EDGES .003-.015 UNLESS OTHERWISE SPECIFIED.
- DIMENSIONS IN INCHES. UNLESS OTHERWISE SPECIFIED, TOLERANCES: LINEAR DIMENSIONS ± .010, ANGULAR DIMENSIONS ± 5°.
- DO NOT USE UNASSIGNED PART NUMBERS.

AS & AMS ARE SOCIETY OF AUTOMOTIVE ENGINEERS, INC. PUBLICATIONS.  
THIS STANDARD WAS DEVELOPED COOPERATIVELY WITH THE MILITARY SERVICES BY THE SAE AEROSPACE PART STANDARDS DIVISION

P.A. AS Other Cont © AV 99	INTERNATIONAL INTEREST ©	TITLE	MILITARY STANDARD
		BOLT, MACHINE - HEXAGON HEAD, FULL SHANK, AMS 5731, .750-16 UNJF-3A	<b>MS9497</b>
PROCUREMENT SPECIFICATION NUN.	SUPERSEDES:	PAGE 1 OF 1	