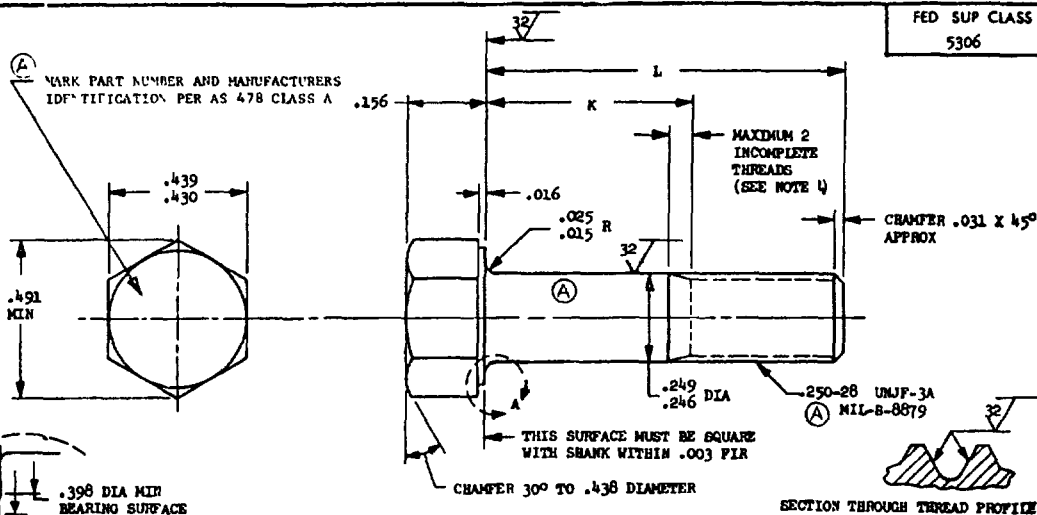


MS9490

VIEW A
ENLARGED

448 DIA MAX

PART NUMBER	L	K	APPROX WEIGHT LB/100	PART NUMBER	L	K	APPROX WEIGHT LB/100
MS9490-02	1.812	1.002-1.062	3.22	MS9490-31	2.375	1.565-1.625	4.00
MS9490-03	1.938	1.128-1.188	3.39	MS9490-32	2.500	1.690-1.750	4.17
MS9490-04	.375	.079-.099	1.25	MS9490-33	2.625	1.815-1.875	4.34
MS9490-05	.438	.079-.099	1.33	MS9490-34	2.750	1.940-2.000	4.51
MS9490-06	.500	.079-.099	1.42	MS9490-35	2.875	2.065-2.125	4.69
MS9490-07	.562	.079-.099	1.50	MS9490-36	3.000	2.190-2.250	4.86
MS9490-08	.625	.079-.099	1.59	MS9490-37	3.125	2.315-2.375	5.03
MS9490-09	.688	.079-.099	1.68	MS9490-38	3.250	2.440-2.500	5.20
MS9490-10	.750	.079-.099	1.76	MS9490-39	3.375	2.565-2.625	5.37
MS9490-11	.812	.079-.099	1.85	MS9490-40	3.500	2.690-2.750	5.55
MS9490-12	.875	.079-.125	1.93	MS9490-41	3.625	2.815-2.875	5.72
MS9490-13	.938	.128-.188	2.02	MS9490-42	3.750	2.940-3.000	5.89
MS9490-14	1.000	.190-.250	2.11	MS9490-43	3.875	3.065-3.125	6.06
MS9490-15	1.062	.252-.312	2.19	MS9490-44	4.000	3.190-3.250	6.23
MS9490-16	1.125	.315-.375	2.28	MS9490-45	4.125	3.315-3.375	6.41
MS9490-17	1.188	.378-.438	2.36	MS9490-46	4.250	3.440-3.500	6.58
MS9490-18	1.250	.440-.500	2.45	MS9490-47	4.375	3.565-3.625	6.75
MS9490-19	1.312	.502-.562	2.53	MS9490-48	4.500	3.690-3.750	6.92
MS9490-20	1.375	.565-.625	2.62	MS9490-49	4.625	3.815-3.875	7.09
MS9490-21	1.438	.628-.688	2.71	MS9490-50	4.750	3.940-4.000	7.27
MS9490-22	1.500	.690-.750	2.79	MS9490-51	4.875	4.065-4.125	7.44
MS9490-23	1.562	.752-.812	2.88	MS9490-52	5.000	4.190-4.250	7.61
MS9490-24	1.625	.815-.875	2.97	MS9490-53	5.125	4.315-4.375	7.78
MS9490-25	1.688	.878-.938	3.05	MS9490-54	5.250	4.440-4.500	7.95
MS9490-26	1.750	.940-1.000	3.14	MS9490-55	5.375	4.565-4.625	8.13
MS9490-27	1.875	1.065-1.125	3.31	MS9490-56	5.500	4.690-4.750	8.30
MS9490-28	2.000	1.190-1.250	3.48	MS9490-57	5.625	4.815-4.875	8.47
MS9490-29	2.125	1.315-1.375	3.65	MS9490-58	5.750	4.940-5.000	8.61
MS9490-30	2.250	1.440-1.500	3.82	MS9490-59	5.875	5.065-5.125	8.78
				MS9490-60	6.000	5.190-5.250	8.95

- SHANK SHALL BE STRAIGHT WITHIN .003 TOTAL PER INCH OF BOLT LENGTH
- THE CONCENTRICITY OF THREAD PD IN RELATION TO THE SHANK SHALL BE WITHIN .006 FIR
- THE CONCENTRICITY OF THE SHANK IN RELATION TO THE WASHER FACE DIAMETER AND HEXAGON SHALL BE WITHIN .013 FIR
- INCOMPLETE THREADS NOT TO ENTER FILLET
- MATERIAL CORROSION AND HEAT RESISTANT STEEL AMS 5731.
- MANUFACTURING SPECIFICATION AMS 7477.
- FLUORESCENT PENETRANT INSPECTION PER AMS 2645.
- SURFACE TEXTURE USAS B46.1-1962 UNLESS OTHERWISE SPECIFIED SURFACES TO BE 125 MICROINCHES EXCEPT HEXAGON
- BREAK SHARP EDGES .003-.015 UNLESS OTHERWISE SPECIFIED
- DIMENSIONS IN INCHES. UNLESS OTHERWISE SPECIFIED, TOLERANCES: LINEAR DIMENSIONS $\pm .010$, ANGULAR DIMENSIONS $\pm 5^\circ$.
- DO NOT USE UNASSIGNED PART NUMBERS.

AS & AMS ARE SOCIETY OF AUTOMOTIVE ENGINEERS, INC. PUBLICATIONS

THIS STANDARD WAS DEVELOPED COOPERATIVELY WITH THE MILITARY SERVICES BY THE SAE AEROSPACE PART STANDARDS DIVISION

PAF - 11 Other Cost Army - AV Navy - AS	INTERNATIONAL INTEREST ASSC AIR STD 17/2	TITLE BOLT, MACHINE - HEXAGON HEAD, FULL SHANK, AMS 5731, 250-28 UNJF-3A	MILITARY STANDARD	
			MS9490	
PROCUREMENT SPECIFICATION NONE			SHEET 1 OF 1	

DD FORM 672-1 (Coordinated)

PREVIOUS EDITIONS OF THIS FORM ARE OBSOLETE