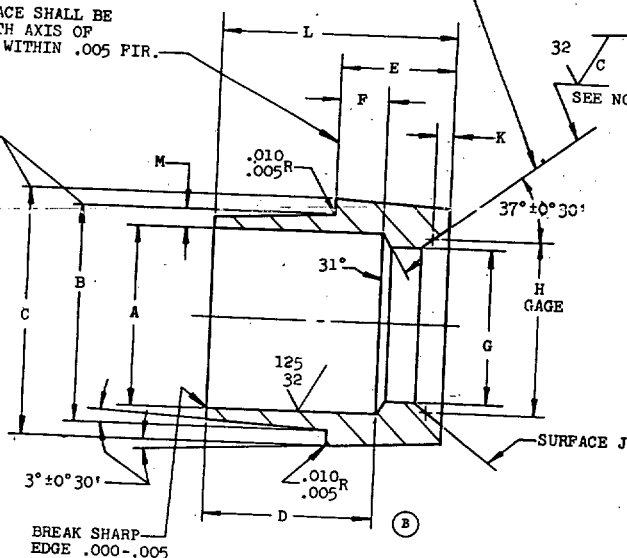
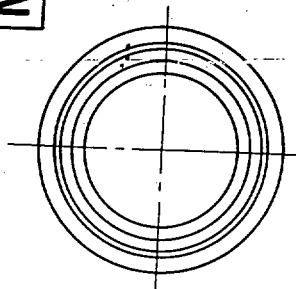


**MS9483**FED. SUP CLASS  
4730THIS SURFACE SHALL BE  
SQUARE WITH AXIS OF  
SURFACE J WITHIN .005 FIR.DIA B AND DIA C SHALL  
BE CONCENTRIC WITH THIS  
SURFACE WITHIN .005 FIR.32 C NO  
FLAWS  
SEE NOTE 5

TO SHARP CORNER

User activities:  
Army - MT, MEReview activities:  
USAF - B2, B5

PART NO.	NOM TUBE OD	A DIA +.002 -.000	B DIA +.000 -.003	C DIA +.000 -.003	D	E	F	G DIA	H DIA GAGE	K	L R&F	M MIN	APPROX WEIGHT LB/100
MS9483-02	.125	.115	.172	.267	.346	.235	.100	.090	.124	.041	.481	.023	.356
MS9483-03	.188	.178	.234	.329	.358	.235	.100	.150	.185	.040	.493	.023	.488
*MS9483-04	.250	.240	.297	.383	.376	.235	.100	.200	.242	.036	.511	.023	.615
MS9483-05	.312	.302	.366	.445	.376	.235	.100	.260	.302	.035	.511	.027	.783
*MS9483-06	.375	.365	.432	.502	.376	.228	.100	.320	.358	.031	.504	.028	.894
MS9483-07	.438	.428	.494	.564	.403	.255	.120	.385	.430	.036	.538	.028	1.090
*MS9483-08	.500	.489	.562	.682	.432	.285	.120	.438	.504	.044	.597	.031	1.910
MS9483-09	.562	.551	.626	.743	.451	.295	.150	.500	.555	.036	.596	.032	2.140
*MS9483-10	.625	.614	.690	.797	.479	.302	.150	.562	.621	.039	.631	.033	2.340
MS9483-11	.688	.677	.762	.908	.510	.305	.120	.625	.698	.048	.695	.037	3.350
*MS9483-12	.750	.739	.826	.972	.510	.306	.120	.688	.769	.054	.696	.038	3.670
MS9483-14	.875	.864	.953	1.097	.510	.325	.130	.812	.894	.054	.705	.039	4.430
*MS9483-16	1.000	.989	1.081	1.222	.510	.342	.140	.938	1.021	.055	.712	.041	5.220
MS9483-18	1.125	1.114	1.209	1.409	.510	.370	.140	1.062	1.174	.074	.740	.042	7.410
*MS9483-20	1.250	1.239	1.339	1.534	.510	.397	.160	1.188	1.299	.074	.747	.045	8.670
*MS9483-24	1.500	1.484	1.609	1.784	.510	.405	.180	1.438	1.532	.062	.735	.057	11.020
MS9483-18	1.750	1.734	1.882	2.159	.510	.405	.100	1.688	1.839	.100	.815	.069	18.360
*MS9483-32	2.000	1.984	2.159	2.409	.510	.405	.100	1.938	2.099	.107	.815	.082	21.840
*MS9483-40	2.500	2.484	2.659	2.911	.510	.405	.100	2.438	2.594	.117	.815	.082	26.900
*MS9483-48	3.000	2.984	3.172	3.411	.510	.405	.100	2.938	3.099	.107	.815	.089	32.920

## \* PREFERRED SIZES.

1. MATERIAL: CORROSION AND HEAT RESISTANT STEEL AMS 5646
2. SURFACE TEXTURE: USAS B46.1-1962 UNLESS OTHERWISE SPECIFIED, SURFACES TO BE 125 MICROINCHES.
3. BREAK SHARP EDGES .003-.015 UNLESS OTHERWISE SPECIFIED.
4. DIMENSIONS IN INCHES. UNLESS OTHERWISE SPECIFIED, TOLERANCES: LINEAR DIMENSIONS  $\pm .010$ , ANGULAR DIMENSION  $\pm 5^\circ$ , ALL DIAMETERS CONCENTRIC WITHIN .010 FIR.
5. SURFACE J SHALL BE FREE OF NICKS, CHATTER MARKS OR LOW SPOTS. UNBROKEN LINE OF CONTACT TO SHOW ALL AROUND AT OTHER THAN EXTREMITIES OF SURFACE J WHEN ROTATED IN CONTACT WITH  $74^\circ 0' \pm 0' 1'$  INCLUDED ANGLE GAGE LIGHTLY COATED BY RUBBING WITH CARBON PAPER.
6. ABRASIVE FINISHING (IF USED) BY SILICON CARBIDE ONLY.
7. MARK PART NUMBER AND MANUFACTURERS IDENTIFICATION ON PACKAGE.
8. DO NOT USE UNASSIGNED PART NUMBERS.

AS & AMS ARE SOCIETY OF AUTOMOTIVE ENGINEERS, INC., PUBLICATIONS.  
THIS STANDARD WAS DEVELOPED COOPERATIVELY WITH THE MILITARY SERVICES BY THE SAE-PARTS-STANDARDS DIVISION

P.A. USAF - 11

TITLE

Other Cust  
Navy - AS  
Army - AV

FERRULE, BRAZING, TUBE FITTING - AMS 5646, STRAIGHT

PROCUREMENT SPECIFICATION  
NONE

SUPERSEDES: MS9225

MILITARY STANDARD

**MS9483**

SHEET 1 OF 1

DD FORM 672-1

COORDINATED

PREVIOUS EDITIONS OF THIS FORM ARE OBSOLETE

U. S. GOVERNMENT PRINTING OFFICE: 1969-341-526/A-7371

4730 - 0776

REVISED 6 Apr 67 1 May 69

APPROVED 25 Jan 65

This military standard is approved by the Department of Defense and is mandatory on all activities. Selection for all new equipment and design applications and for repetitive use shall be made from this document.