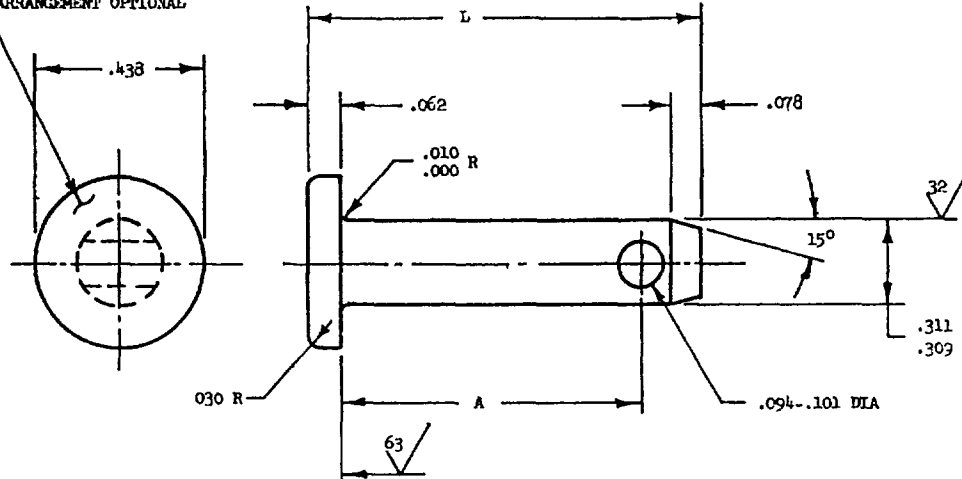


MS9465(ASG)FED SUP CLASS
5315MARK MS9465-XX AND MANUFACTURERS
IDENTIFICATION PER AS 478 CLASS A
ARRANGEMENT OPTIONAL

PART NUMBER	A	L	APPROX WEIGHT LB/100	PART NUMBER	A	L	APPROX WEIGHT LB/100	PART NUMBER	A	L	APPROX WEIGHT LB/100
MS9465-07	.392	.594	1.41	MS9465-13	.767	.969	2.22	MS9465-25	1.517	1.719	3.54
MS9465-08	.454	.656	1.55	MS9465-14	.829	1.031	2.36	MS9465-26	1.579	1.781	3.98
MS9465-09	.517	.719	1.68	MS9465-15	.892	1.094	2.49	MS9465-27	1.642	1.844	4.11
MS9465-10	.579	.781	1.82	MS9465-16	.954	1.156	2.63	MS9465-28	1.704	1.906	4.25
MS9465-11	.642	.844	1.95	MS9465-17	1.017	1.219	2.76	MS9465-29	1.767	1.969	4.38
MS9465-12	.704	.906	2.09	MS9465-18	1.079	1.281	2.90	MS9465-30	1.829	2.031	4.52
				MS9465-19	1.142	1.344	3.03	MS9465-31	1.892	2.094	4.65
				MS9465-20	1.204	1.406	3.17	MS9465-32	1.954	2.156	4.78
				MS9465-21	1.267	1.469	3.30	MS9465-33	2.017	2.219	4.92
				MS9465-22	1.329	1.531	3.44				
				MS9465-23	1.392	1.594	3.57				
				MS9465-24	1.454	1.656	3.71				

1. MATERIAL: CORROS. AND WEAR RESISTANT STEEL AMS 5735

2. SURFACE ROUGHNESS: AS 291 UNLESS OTHERWISE SPECIFIED, SURFACES TO BE 125 MICROINCHES

3. PART SUBJECT TO FRACTURE CRACK INSPECTION PER AMS 2645.

4. BREAK SHARP EDGES .003-.015 UNLESS OTHERWISE SPECIFIED.

5. DIMENSIONS IN INCHES UNLESS OTHERWISE SPECIFIED, TOLERANCES LINEAR DIMENSIONS $\pm .010$, ANGULAR DIMENSIONS $\pm 5^\circ$

6. DO NOT USE UNASSIGNED PART NUMBERS

AS & AMS ARE SOCIETY OF AUTOMOTIVE ENGINEERS, INC. PUBLICATIONS.
THIS STANDARD WAS DEVELOPED COOPERATIVELY WITH THE ENGINE AND PROPELLER UTILITY PARTS COMMITTEE OF THE SAE.

P.A. USAF - 11 Other Cust Navy - 12	TITLE PIN, STRAIGHT, HEADED .311 DIAMETER, AMS 5735	MILITARY STANDARD MS9465 (ASG)
PROCUREMENT SPECIFICATION 1 JIS	SUPERSEDES:	SHEET 1 OF 1

This standard has been approved by the Department of the Navy and is mandatory for use by that activity. All other military activities are required to employ this standard where suitable.

APPROVED 5 May 64
REVISED