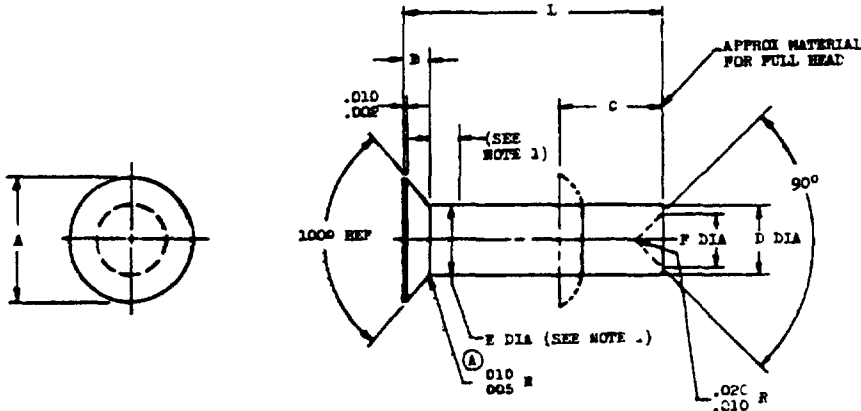


MS9460REQ SUP CLASS
5320

NOMINAL SIZE	A	B + .001 - .003	C	D	E	F ± .01	(2) S
.062	.099 - .107	.022	.034	.061 - .063	.061 - .064	NO RECESS	.010
.094	.164 - .172	.036	.141	.093 - .095	.093 - .096	NO RECESS	.010
.125	.210 - .216	.042	.188	.123 - .126	.123 - .128	0°	.010
.156	.272 - .280	.055	.234	.154 - .157	.154 - .159	0°	.015
.188	.337 - .347	.070	.281	.186 - .188	.186 - .191	.100	.015
.250	.460 - .470	.095	.375	.246 - .252	.246 - .254	.125	.020
.312	.548 - .558	.106	.465	.310 - .314	.310 - .316	.150	.020
.375	.678 - .688	.134	.562	.373 - .377	.373 - .379	.180	.020

1. DISTANCE .060 FOR LENGTHS .188 AND SHORTER AND .100 FOR LENGTHS LONGER THAN .188
2. A DIA MUST BE CONCENTRIC WITH D DIA WITHIN 5 FULL INDICATOR READING
3. MATERIAL CORROSION AND HEAT RESISTANT STEEL AMS 7235
4. REMOVE BURRS AND BREAK SHARP EDGES .000 - .015
5. DIMENSIONS IN INCHES. UNLESS OTHERWISE SPECIFIED TOLERANCES; LINEAR DIMENSIONS ±.002 ANGULAR DIMENSIONS ±5°
6. IDENTIFICATION MARK MS9460-XXX AND MANUFACTURER'S IDENTIFICATION ON CONTAINER
7. DO NOT USE UNASSIGNED PART NUMBERS

FOR DESIGN FEATURE PURPOSES, THIS STANDARD TAKES PRECEDENCE OVER PROCEEDING DOCUMENTS. IF ANY OTHER DOCUMENTS REFERENCED DOCUMENTS SHALL BE OF THE ISSUE IN EFFECT AS DATE OF INTENTIONS "P" BE

AMS IS A SOCIETY OF AUTOMOTIVE ENGINEERS, INC PUBLICATION

FOR CHANGES SEE SHEET 2 OF 2

THIS STANDARD WAS DEVELOPED COOPERATIVELY WITH THE ENGINE AND PROPELLER WORKING GROUP COMMITTEE OF THE SAE

P.A. USAF - 11 Other Cost Army - AV Navy - AS	TITLE RIVET, SOLID - 100° FLUSH HEAD, AMS 7235	MILITARY STANDARD MS9460
PROCUREMENT SPECIFICATION NONE	SUPERSEDES:	SHEET 1 OF 2

DD FORM 672-1

PREVIOUS EDITIONS OF THIS FORM ARE OBSOLETE

5320-0280

User activities
 Army - ME
 Navy - MG
 Air Force - DBA

Revision activities
 Army -
 Navy -
 Air Force - 92
 DBA -

This document is to be used for use by all Departments and Agencies of the Department of Defense. Selection for all new engineering and design applications in the Department of Defense shall be made from this document.

REVISED (A) 27 JUN 74

APPROVED 1 Jul 51

This military standard is approved for use by all Departments and Agencies of the Department of Defense. Selection for all new engineering and design applications and for repetitive use shall be made from this document.

MS 9460

NOM. SIZE	.062			.094			.125			.156			.188			.250			.312			.375		
	PART NO.	APPROX WEIGHT LB/100	PART NO.	APPROX WEIGHT LB/100	PART NO.	APPROX WEIGHT LB/100	PART NO.	APPROX WEIGHT LB/100	PART NO.	APPROX WEIGHT LB/100	PART NO.	APPROX WEIGHT LB/100	PART NO.	APPROX WEIGHT LB/100	PART NO.	APPROX WEIGHT LB/100	PART NO.	APPROX WEIGHT LB/100	PART NO.	APPROX WEIGHT LB/100	PART NO.	APPROX WEIGHT LB/100		
.125	MS9460-002	.01																						
.126	MS9460-003	.02																						
.128	MS9460-004	.02	MS9460-050	.05																				
.219	MS9460-005	.02	MS9460-051	.06																				
.250	MS9460-006	.03	MS9460-052	.06	MS9460-098	.12																		
.281	MS9460-007	.03	MS9460-053	.07	MS9460-099	.13																		
.312	MS9460-008	.03	MS9460-054	.08	MS9460-100	.14																		
.344	MS9460-009	.04	MS9460-055	.08	MS9460-101	.15																		
.375	MS9460-010	.04	MS9460-056	.10	MS9460-102	.17																		
.408	MS9460-011	.04	MS9460-057	.10	MS9460-103	.18																		
.438	MS9460-012	.04	MS9460-058	.11	MS9460-104	.19																		
.469	MS9460-013	.05	MS9460-059	.11	MS9460-105	.20																		
.500	MS9460-014	.05	MS9460-060	.12	MS9460-106	.21																		
.531	MS9460-015	.05	MS9460-061	.12	MS9460-107	.23																		
.562	MS9460-016	.06	MS9460-062	.13	MS9460-108	.24																		
.594	MS9460-017	.06	MS9460-063	.14	MS9460-109	.25																		
.625	MS9460-018	.06	MS9460-064	.14	MS9460-110	.27																		
.656			MS9460-065	.15	MS9460-111	.28																		
.688			MS9460-066	.16	MS9460-112	.29																		
.719			MS9460-067	.16	MS9460-113	.30																		
.750			MS9460-068	.17	MS9460-114	.31																		
.812			MS9460-070	.18	MS9460-116	.34																		
.875			MS9460-072	.20	MS9460-118	.36																		
.938			MS9460-074	.21	MS9460-120	.39																		
1.000			MS9460-076	.22	MS9460-122	.41																		
1.062				.44	MS9460-124	.44																		
1.125				.46	MS9460-126	.46																		
1.188				.49	MS9460-128	.49																		
1.250				.51	MS9460-130	.51																		
1.312				.54	MS9460-132	.54																		
1.375				.56	MS9460-134	.56																		
1.438				.59	MS9460-136	.59																		
1.500					MS9460-138	.61																		

FED SUP CLASS
5320

AMS IS A SOCIETY OF AUTOMOTIVE ENGINEERS, INC. PUBLICATIONS

THIS STANDARD WAS DEVELOPED COOPERATIVELY WITH THE ENGINE AND PROPELLER UTILITY PARTS COMMITTEE OF THE SAE

P.A. USAP - 11 Other Cust Army - AV Navy - AS	TITLE RIVET, SOLID - 100° FLUSH HEAD, AMS 7235	MILITARY STANDARD MS9460
PROCUREMENT SPECIFICATION NONE	SUPERSEDES:	SHEET 2 OF 2

APPROVED 5 JUL 63 REVISED (A) FOR CHANGES SEE SHEETS 1 & 2