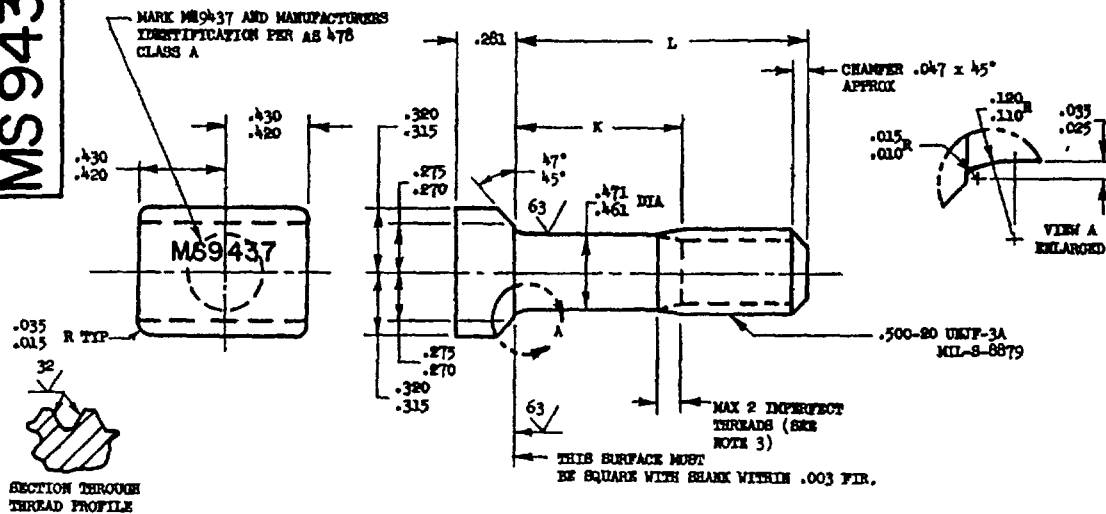


NOTICE—When Government drawings, specifications, or other data are used for any purpose other than in connection with a definitely related Government procurement operation, the United States Government thereby incurs no responsibility, nor any obligation whatsoever, and the fact that the Government may have furnished, furnished, or in any way applied the said drawings, specifications, or other data is not to be regarded by implication or otherwise as in any manner forming the basis of, or in any way constituting, a contract, or conveying any right or permission to manufacture, use, or sell any patented invention that may in any way be related thereto.

This standard has been approved by the Department of the Army and is mandatory for use by all other military activities are required to employ this standard where suitable.

MS 9437 (ASG)



| PART NUMBER | L | K | APPROX WEIGHT LB/100 | PART NUMBER | L | K | APPROX WEIGHT LB/100 |
|-------------|-------|-------------|----------------------|-------------|-------|-------------|----------------------|
| MS9437-05 | .875 | .155-.175 | 8.41 | MS9437-31 | 3.250 | 1.940-2.000 | 19.89 |
| MS9437-06 | .938 | .155-.175 | 8.71 | MS9437-32 | 3.375 | 2.065-2.125 | 20.58 |
| MS9437-07 | 1.000 | .155-.175 | 9.01 | MS9437-33 | 3.500 | 2.190-2.250 | 21.10 |
| MS9437-08 | 1.062 | .155-.175 | 9.32 | MS9437-34 | 3.625 | 2.315-2.375 | 21.70 |
| MS9437-09 | 1.125 | .155-.175 | 9.62 | MS9437-35 | 3.750 | 2.440-2.500 | 22.31 |
| MS9437-10 | 1.188 | .155-.175 | 9.92 | MS9437-36 | 3.875 | 2.565-2.625 | 22.91 |
| MS9437-11 | 1.250 | .155-.175 | 10.22 | MS9437-37 | 4.000 | 2.690-2.750 | 23.52 |
| MS9437-12 | 1.312 | .155-.175 | 10.53 | MS9437-38 | 4.125 | 2.815-2.875 | 24.12 |
| MS9437-13 | 1.375 | .155-.175 | 10.83 | MS9437-39 | 4.250 | 2.940-3.000 | 24.72 |
| MS9437-14 | 1.438 | .155-.175 | 11.13 | MS9437-40 | 4.375 | 3.065-3.125 | 25.33 |
| MS9437-15 | 1.500 | .190-.250 | 11.43 | MS9437-41 | 4.500 | 3.190-3.250 | 25.93 |
| MS9437-16 | 1.562 | .258-.312 | 11.73 | MS9437-42 | 4.625 | 3.315-3.375 | 26.54 |
| MS9437-17 | 1.625 | .315-.375 | 12.04 | MS9437-43 | 4.750 | 3.440-3.500 | 27.14 |
| MS9437-18 | 1.688 | .378-.438 | 12.34 | MS9437-44 | 4.875 | 3.565-3.625 | 27.75 |
| MS9437-19 | 1.750 | .440-.500 | 12.64 | MS9437-45 | 5.000 | 3.690-3.750 | 28.35 |
| MS9437-20 | 1.875 | .565-.625 | 13.24 | MS9437-46 | 5.125 | 3.815-3.875 | 28.95 |
| MS9437-21 | 2.000 | .690-.750 | 13.85 | MS9437-47 | 5.250 | 3.940-4.000 | 29.56 |
| MS9437-22 | 2.125 | .815-.875 | 14.45 | MS9437-48 | 5.375 | 4.065-4.125 | 30.16 |
| MS9437-23 | 2.250 | .940-1.000 | 15.06 | MS9437-49 | 5.500 | 4.190-4.250 | 30.77 |
| MS9437-24 | 2.375 | 1.065-1.125 | 15.66 | MS9437-50 | 5.625 | 4.315-4.375 | 31.37 |
| MS9437-25 | 2.500 | 1.190-1.250 | 16.27 | MS9437-51 | 5.750 | 4.440-4.500 | 31.98 |
| MS9437-26 | 2.625 | 1.315-1.375 | 16.87 | MS9437-52 | 5.875 | 4.565-4.625 | 32.58 |
| MS9437-27 | 2.750 | 1.440-1.500 | 17.47 | MS9437-53 | 6.000 | 4.690-4.750 | 33.18 |
| MS9437-28 | 2.875 | 1.565-1.625 | 18.08 | | | | |
| MS9437-29 | 3.000 | 1.690-1.750 | 18.68 | | | | |
| MS9437-30 | 3.125 | 1.815-1.875 | 19.29 | | | | |

- SHANK SHALL BE STRAIGHT WITHIN .003 FIR PER INCH OF BOLT LENGTH.
 - THE CONCENTRICITY OF THREAD PD IN RELATION TO THE SHANK SHALL BE WITHIN .006 FIR.
 - INCOMPLETE THREADS NOT TO ENTER THE FILLET AREA.
 - HEAD TO SHANK FILLET SHALL BE COLD BOLDED.
 - MATERIAL: CORROSION AND HEAT RESISTANT STEEL AMS 5735
 - SURFACE ROUGHNESS: AS 291, UNLESS OTHERWISE SPECIFIED, SURFACES TO BE 125 MICROINCHES EXCEPT UPSET HEAD
 - MANUFACTURING SPECIFICATION: AMS 7478 EXCEPT HEAD MUST BE UPSET.
 - PART SUBJECT TO FLUORESCENT PERMEANT INSPECTION PER AMS 2645.
 - SHANK SHARP EDGES .003-.015 UNLESS OTHERWISE SPECIFIED.
 - DIMENSIONS IN INCHES. UNLESS OTHERWISE SPECIFIED, TOLERANCES, LINEAR DIMENSIONS $\pm .010$,
 - DO NOT USE UNASSIGNED PART NUMBERS.
- AS & AMS ARE SAE PUBLICATIONS.
THIS STANDARD WAS DEVELOPED COOPERATIVELY WITH THE ENGINE AND PROPELLER UTILITY PARTS COMMITTEE OF THE SAE.

| | | | |
|---------------------------|-------------|--|-------------------|
| P.A. | USAF - AFSC | TITLE | MILITARY STANDARD |
| Other Cust | NAVY - WEP | BOLT, THE HEAD - AMS 5735, CHAMFERED, .500-20 UNF-3A | MS9437 (ASG) |
| PROCUREMENT SPECIFICATION | BOXES | SUPSEDES: | SHEET 1 OF 1 |