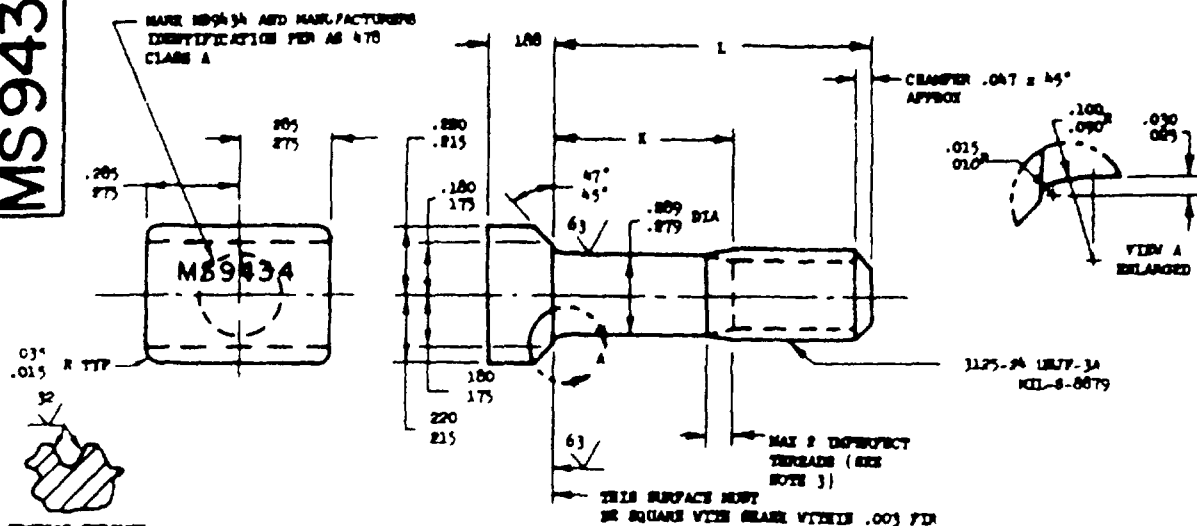


**MS 9434 (ASG)**PDS SUP CLASS  
9306SECTION THROUGH  
THREAD PROFILES

PART NUMBER	L	K	APPROX WEIGHT LBS/100	PART NUMBER	L	K	APPROX WEIGHT LBS/100
MS9434-04	500	130-150	2.17	MS9434-31	2.625	1.690-1.750	6.00
MS9434-05	562	130-150	2.26	MS9434-32	2.750	1.815-1.875	6.22
MS9434-06	625	130-150	2.39	MS9434-33	2.875	1.940-2.000	6.45
MS9434-07	688	130-150	2.50	MS9434-34	3.000	2.065-2.125	6.67
MS9434-08	750	130-150	2.61	MS9434-35	3.125	2.190-2.250	6.90
MS9434-09	812	130-150	2.72	MS9434-36	3.250	2.315-2.375	7.13
MS9434-10	875	130-150	2.84	MS9434-37	3.375	2.440-2.500	7.35
MS9434-11	938	130-150	2.95	MS9434-38	3.500	2.565-2.625	7.58
MS9434-12	1.000	130-150	3.06	MS9434-39	3.625	2.690-2.750	7.80
MS9434-13	1.062	130-150	3.18	MS9434-40	3.750	2.815-2.875	8.03
MS9434-14	1.125	130-150	3.29	MS9434-41	3.875	2.940-3.000	8.25
MS9434-15	1.188	252-312	3.40	MS9434-42	4.000	3.065-3.125	8.48
MS9434-16	1.250	315-375	3.51	MS9434-43	4.125	3.190-3.250	8.71
MS9434-17	1.312	378-438	3.63	MS9434-44	4.250	3.315-3.375	8.93
MS9434-18	1.375	440-500	3.74	MS9434-45	4.375	3.440-3.500	9.16
MS9434-19	1.438	502-562	3.85	MS9434-46	4.500	3.565-3.625	9.38
MS9434-20	1.500	565-625	3.97	MS9434-47	4.625	3.690-3.750	9.61
MS9434-21	1.562	628-688	4.08	MS9434-48	4.750	3.815-3.875	9.83
MS9434-22	1.625	690-750	4.19	MS9434-49	4.875	3.940-4.000	10.06
MS9434-23	1.688	752-812	4.30	MS9434-50	5.000	4.065-4.125	10.29
MS9434-24	1.750	815-875	4.42	MS9434-51	5.125	4.190-4.250	10.51
MS9434-25	1.812	878-938	4.54	MS9434-52	5.250	4.315-4.375	10.74
MS9434-26	2.000	1.065-1.125	4.87	MS9434-53	5.375	4.440-4.500	10.96
MS9434-27	2.125	1.190-1.250	5.09	MS9434-54	5.500	4.565-4.625	11.19
MS9434-28	2.250	1.315-1.375	5.32	MS9434-55	5.625	4.690-4.750	11.41
MS9434-29	2.375	1.440-1.500	5.55	MS9434-56	5.750	4.815-4.875	11.64
MS9434-30	2.500	1.565-1.625	5.77	MS9434-57	5.875	4.940-5.000	11.86
				MS9434-58	6.000	5.065-5.125	12.09

- SHANK SHALL BE STRAIGHT WITHIN .003 FID PER INCH OF BOLT LENGTH
- THE CONCENTRICITY OF THREAD PD IN RELATION TO THE SHANK SHALL BE WITHIN .006 FID
- INCOMPLETE THREADS NOT TO ENTER THE FILLET AREA
- HEAD TO SHANK FILLET SHALL BE COLD ROLLED
- MATERIAL CORROSION AND HEAT RESISTANT STEEL AND 5735
- SURFACE ROUGHNESS AS 791, UNLESS OTHERWISE SPECIFIED, SURFACES TO BE 125 MICROINCHES EXCEPT UPST HEAD
- MANUFACTURING SPECIFICATION AS 7478 EXCEPT HEAD MUST BE UPST
- PART SUBJECT TO FLUORESCENT PENETRANT INSPECTION PER AS 2645
- BREAK SHARP EDGES .003-.015 UNLESS OTHERWISE SPECIFIED
- DIMENSIONS IN INCHES UNLESS OTHERWISE SPECIFIED, TOLERANCES: LINEAR DIMENSIONS: .010,

DO NOT USE UNASSIGNED PART NUMBERS

AS &amp; AMS ARE SAE PUBLICATIONS

THIS STANDARD WAS DEVELOPED COOPERATIVELY WITH THE ENGINE AND PROPELLER UTILITY PARTS COMMITTEE OF THE SAE

PA	AF - AFPC	TITLE	MILITARY STANDARD
Other Cost		BOLT, THE HEAD - AND 5735, CHAMFERED, 3125-PA 1877-34	<b>MS9434 (ASG)</b>
NAVT - WEP			
PROCUREMENT SPECIFICATION	SUPERSEDES.		SHEET 1 OF 1