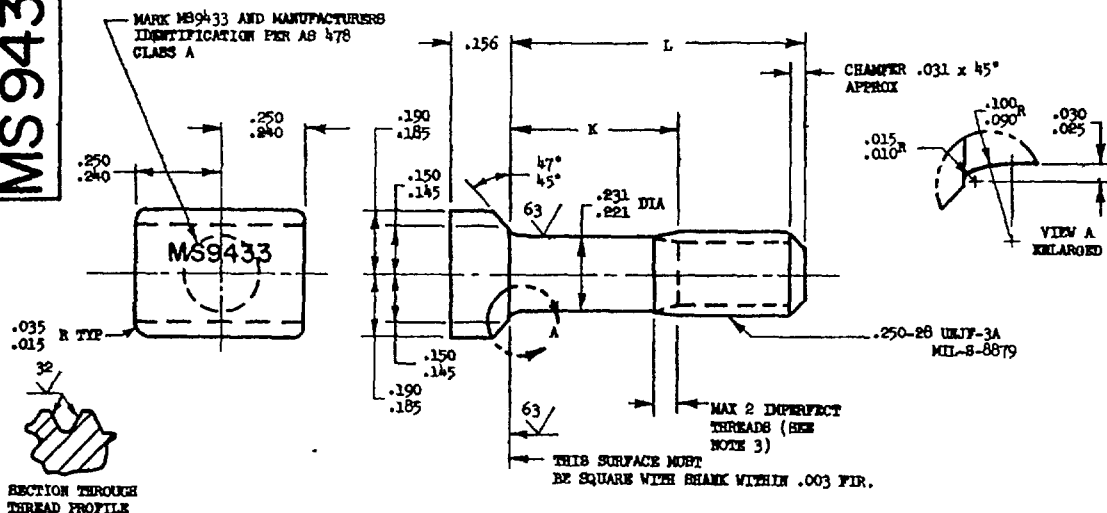


NOTICE—When Government drawings, specifications, or other data are used for any purpose other than in connection with a definitely related Government procurement operation the United States Government thereby incurs no responsibility, nor any obligation whatsoever, and the fact that the Government may have furnished, or in any way supplied the said drawings, specifications, or other data is not to be regarded by implication or otherwise as in any manner licensing the holder or any other person or corporation, or carrying out any rights or permission to manufacture, use, or sell any patented invention that may in any way be related thereto.

This standard has been approved by the Department of the Army and is hereby approved for use by that activity. All other military activities are required to employ this standard where suitable.

MS 9433 (ASG)



SECTION THROUGH
THREAD PROFILE

PART NUMBER	L	K	APPROX WEIGHT LB/100	PART NUMBER	L	K	APPROX WEIGHT LB/100
MS9433-05	.438	.121-.141	1.25	MS9433-31	2.375	1.565-1.625	3.47
MS9433-06	.500	.121-.141	1.32	MS9433-32	2.500	1.690-1.750	3.61
MS9433-07	.562	.121-.141	1.39	MS9433-33	2.625	1.815-1.875	3.75
MS9433-08	.625	.121-.141	1.46	MS9433-34	2.750	1.940-2.000	3.90
MS9433-09	.688	.121-.141	1.53	MS9433-35	2.875	2.065-2.125	4.04
MS9433-10	.750	.121-.141	1.60	MS9433-36	3.000	2.190-2.250	4.18
MS9433-11	.812	.121-.141	1.68	MS9433-37	3.125	2.315-2.375	4.32
MS9433-12	.875	.121-.141	1.75	MS9433-38	3.250	2.440-2.500	4.47
MS9433-13	.938	.128-.188	1.82	MS9433-39	3.375	2.565-2.625	4.62
MS9433-14	1.000	.190-.250	1.89	MS9433-40	3.500	2.690-2.750	4.76
MS9433-15	1.062	.252-.312	1.96	MS9433-41	3.625	2.815-2.875	4.90
MS9433-16	1.125	.315-.375	2.03	MS9433-42	3.750	2.940-3.000	5.05
MS9433-17	1.188	.378-.438	2.11	MS9433-43	3.875	3.065-3.125	5.19
MS9433-18	1.250	.440-.500	2.18	MS9433-44	4.000	3.190-3.250	5.33
MS9433-19	1.312	.502-.562	2.25	MS9433-45	4.125	3.315-3.375	5.48
MS9433-20	1.375	.565-.625	2.32	MS9433-46	4.250	3.440-3.500	5.62
MS9433-21	1.438	.628-.688	2.39	MS9433-47	4.375	3.565-3.625	5.76
MS9433-22	1.500	.690-.750	2.46	MS9433-48	4.500	3.690-3.750	5.91
MS9433-23	1.562	.752-.812	2.54	MS9433-49	4.625	3.815-3.875	6.05
MS9433-24	1.625	.815-.875	2.61	MS9433-50	4.750	3.940-4.000	6.19
MS9433-25	1.688	.878-.938	2.68	MS9433-51	4.875	4.065-4.125	6.34
MS9433-26	1.750	.940-1.000	2.75	MS9433-52	5.000	4.190-4.250	6.48
MS9433-27	1.875	1.065-1.125	2.89	MS9433-53	5.125	4.315-4.375	6.62
MS9433-28	2.000	1.190-1.250	3.04	MS9433-54	5.250	4.440-4.500	6.77
MS9433-29	2.125	1.315-1.375	3.18	MS9433-55	5.375	4.565-4.625	6.91
MS9433-30	2.250	1.440-1.500	3.32	MS9433-56	5.500	4.690-4.750	7.05

1. SHANK SHALL BE STRAIGHT WITHIN .003 FIR PER INCH OF BOLT LENGTH.
2. THE CONCENTRICITY OF THREAD PD IN RELATION TO THE SHANK SHALL BE WITHIN .006 FIR.
3. INCOMPLETE THREADS NOT TO ENTER THE FILLET AREA.
4. HEAD TO SHANK FILLET SHALL BE COLD ROLLED.
5. MATERIAL CORROSION AND HEAT RESISTANT STEEL AMS 5735.
6. SURFACE ROUGHNESS AS 291, UNLESS OTHERWISE SPECIFIED, SURFACES TO BE 125 MICROINCHES EXCEPT UPSET HEAD.
7. MANUFACTURING SPECIFICATION: AMS 7478 EXCEPT HEAD MUST BE UPSET.
8. PART SUBJECT TO FLUORESCENT PENETRANT INSPECTION PER AMS 2645.
9. BREAK SHARP EDGES .003-.015 UNLESS OTHERWISE SPECIFIED.
10. DIMENSIONS IN INCHES UNLESS OTHERWISE SPECIFIED, TOLERANCES; LINEAR DIMENSIONS $\pm .010$,
11. DO NOT USE UNASSIGNED PART NUMBERS AS & AMS ARE GAE PUBLICATIONS.

THIS STANDARD WAS DEVELOPED COOPERATIVELY WITH THE ENGINE AND PROPELLER UTILITY PARTS COMMITTEE OF THE SAE.

P.A. USAF - AFSC	TITLE	MILITARY STANDARD
Other Cust	BOLT, THE HEAD - AMS 5735, CHAMFERED, .250-26 UNJF-3A	MS9433 (ASG)
NAVY - WEP		
PROCUREMENT SPECIFICATION	SUPERSEDES:	SHEET 1 OF 1
NOTE		