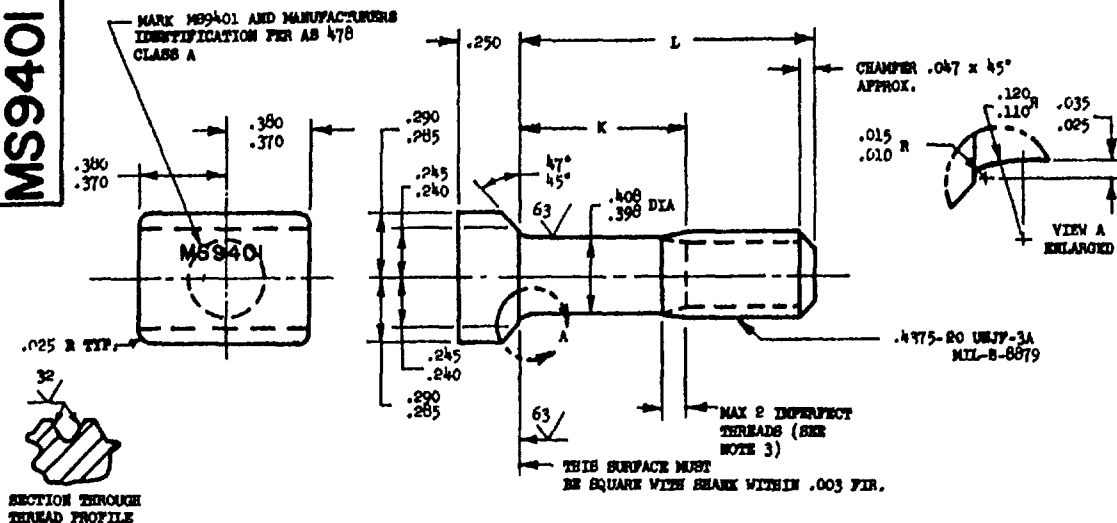


FED SUP CLASS
5306**MS9401 (ASG)**

PART NUMBER	L	K	APPROX. WEIGHT LB/100	PART NUMBER	L	K	APPROX. WEIGHT LB/100
MS9401-06	.812	.155-.175	6.33	MS9401-31	3.000	1.815-1.875	14.29
MS9401-07	.875	.155-.175	6.56	MS9401-32	3.125	1.940-2.000	14.75
MS9401-08	.938	.155-.175	6.78	MS9401-33	3.250	2.065-2.125	15.20
MS9401-09	1.000	.155-.175	7.01	MS9401-34	3.375	2.190-2.250	15.65
MS9401-10	1.062	.155-.175	7.24	MS9401-35	3.500	2.315-2.375	16.11
MS9401-11	1.125	.155-.175	7.46	MS9401-36	3.625	2.440-2.500	16.56
MS9401-12	1.188	.155-.175	7.69	MS9401-37	3.750	2.565-2.625	17.02
MS9401-13	1.250	.155-.175	7.92	MS9401-38	3.875	2.690-2.750	17.47
MS9401-14	1.312	.155-.175	8.15	MS9401-39	4.000	2.815-2.875	17.93
MS9401-15	1.375	.190-.250	8.37	MS9401-40	4.125	2.940-3.000	18.38
MS9401-16	1.438	.252-.312	8.60	MS9401-41	4.250	3.065-3.125	18.83
MS9401-17	1.500	.315-.375	8.83	MS9401-42	4.375	3.190-3.250	19.29
MS9401-18	1.562	.378-.438	9.06	MS9401-43	4.500	3.315-3.375	19.74
MS9401-19	1.625	.440-.500	9.28	MS9401-44	4.625	3.440-3.500	20.20
MS9401-20	1.688	.502-.562	9.51	MS9401-45	4.750	3.565-3.625	20.65
MS9401-21	1.750	.565-.625	9.74	MS9401-46	4.875	3.690-3.750	21.11
MS9401-22	1.875	.690-.750	10.19	MS9401-47	5.000	3.815-3.875	21.56
MS9401-23	2.000	.815-.875	10.65	MS9401-48	5.125	3.940-4.000	22.02
MS9401-24	2.125	.940-1.000	11.10	MS9401-49	5.250	4.065-4.125	22.47
MS9401-25	2.250	1.065-1.125	11.56	MS9401-50	5.375	4.190-4.250	22.93
MS9401-26	2.375	1.190-1.250	12.01	MS9401-51	5.500	4.315-4.375	23.38
MS9401-27	2.500	1.315-1.375	12.47	MS9401-52	5.625	4.440-4.500	23.84
MS9401-28	2.625	1.440-1.500	12.92	MS9401-53	5.750	4.565-4.625	24.29
MS9401-29	2.750	1.565-1.625	13.38	MS9401-54	5.875	4.690-4.750	24.75
MS9401-30	2.875	1.690-1.750	13.83	MS9401-55	6.000	4.815-4.875	25.20

- SHANK SHALL BE STRAIGHT WITHIN .003 FIR, PER INCH OF BOLT LENGTH.
 - THE CONCENTRICITY OF THREAD PD IN RELATION TO THE SHANK SHALL BE WITHIN .006 FIR.
 - INCOMPLETE THREADS NOT TO ENTER THE FILLET AREA.
 - HEAD TO SHANK FILLET SHALL BE COLD ROLLED.
 - MATERIAL: STEEL AMS 6322 HARDNESS: ROCKWELL C26-32.
 - FINISH: CADMIUM PLATE AMS 2400 DIMENSIONS SPECIFIED ARE AFTER PLATING.
 - SURFACE ROUGHNESS: AS 291 UNLESS OTHERWISE SPECIFIED SURFACES TO BE 125 MICROINCHES EXCEPT UPSET HEAD.
 - MANUFACTURING SPECIFICATION: AMS 7452 EXCEPT HEAD MUST BE UPSET.
 - PART SUBJECT TO MAGNETIC PARTICLE INSPECTION PER AMS 2640.
 - BREAK SHARP EDGES .003 - .015 UNLESS OTHERWISE SPECIFIED.
 - DIMENSIONS IN INCHES UNLESS OTHERWISE SPECIFIED. TOLERANCES: LINEAR DIMENSIONS $\pm .010$.
 - DO NOT USE UNASSIGNED PART NUMBERS.
 - AS, AND AMS ARE SAE PUBLICATIONS.
- THIS STANDARD WAS DEVELOPED COOPERATIVELY WITH THE ENGINE AND PROPELLER UTILITY PARTS COMMITTEE OF THE SAE.

P.A. USAF - AFSC

TITLE

Other Cust
Navy - WepBOLT, THE HEAD - AMS 6322, CHAMFERED, .4375-20 UNJF-3A,
CADMIUM PLATE**MILITARY STANDARD****MS9401 (ASG)**PROCUREMENT SPECIFICATION
NONE

SUPERSEDES:

SHEET 1 OF 1

DD FORM 672-1 (Limited circulation)

PREVIOUS EDITIONS OF THIS FORM ARE OBSOLETE

NOTES: When Government drawings, specifications, or other data are used for any purpose other than in connection with a definitely related Government procurement operation, the United States Government hereby incurs no responsibility, nor any obligation whatsoever, nor any obligation to furnish, maintain, or in any way support the said drawings, specifications, or other data in connection with any such operation, or to in any manner facilitate the reproduction or use of any such drawings, specifications, or other data in connection with any such operation, or to in any manner facilitate the reproduction or use of any such drawings, specifications, or other data in connection with any such operation.

This standard has been approved by the Ballistic (Department of the Navy) and the Department of the USAF and is mandatory for use by that activity. All other military activities are required to comply with this standard where suitable.

APPROVED 9 MAY 62 REVISED