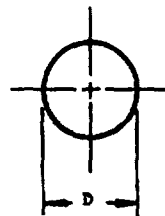
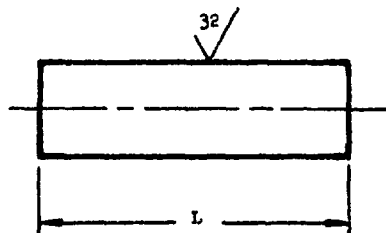


NOTICE.—When Government drawings, specifications, or other data are used for any purpose other than in connection with a definitely related Government procurement operation, the United States Government hereby incurs no responsibility, nor any obligation whatsoever, and the fact that the Government may have furnished, or in any way applied the said drawings, specifications, or other data is not to be regarded by implication or otherwise as in any manner forming the basis of, or for any other person or corporation, or conveying any right of publication by reproduction, sale, or any other means.

This standard has been approved by the Department of the Navy and is mandatory for use by that activity. All other military activities are required to employ this standard where suitable.

MS 9389 (ASG)



FED. SUP CLASS
5315

L + .010	DIAMETER "D" AND PART NUMBERS							
	.0625 + .0005		.0938 + .0005		.1250 + .0005		.1875 + .0005	
	PART NUMBER	APPROX WEIGHT LB/100	PART NUMBER	APPROX WEIGHT LB/100	PART NUMBER	APPROX WEIGHT LB/100	PART NUMBER	APPROX WEIGHT LB/100
.125	MS9389-01	.011						
.188	MS9389-02	.016	MS9389-27	.037				
.250	MS9389-03	.022	MS9389-28	.049	MS9389-53	.088		
.312	MS9389-04	.027	MS9389-29	.061	MS9389-54	.110		
.375	MS9389-05	.032	MS9389-30	.073	MS9389-55	.132	MS9389-80	.295
.438	MS9389-06	.038	MS9389-31	.085	MS9389-56	.154	MS9389-81	.344
.500	MS9389-07	.043	MS9389-32	.097	MS9389-57	.175	MS9389-82	.393
.562	MS9389-08	.049	MS9389-33	.109	MS9389-58	.197	MS9389-83	.441
.625	MS9389-09	.054	MS9389-34	.121	MS9389-59	.219	MS9389-84	.491
.688	MS9389-10	.059	MS9389-35	.134	MS9389-60	.241	MS9389-85	.540
.750	MS9389-11	.065	MS9389-36	.146	MS9389-61	.263	MS9389-86	.589
.812	MS9389-12	.070	MS9389-37	.158	MS9389-62	.285	MS9389-87	.638
.875	MS9389-13	.076	MS9389-38	.170	MS9389-63	.307	MS9389-88	.687
.938	MS9389-14	.081	MS9389-39	.182	MS9389-64	.329	MS9389-89	.737
1.000	MS9389-15	.086	MS9389-40	.194	MS9389-65	.351	MS9389-90	.785
1.062	MS9389-16	.092	MS9389-41	.206	MS9389-66	.373	MS9389-91	.834
1.125	MS9389-17	.097	MS9389-42	.219	MS9389-67	.395	MS9389-92	.884
1.188	MS9389-18	.103	MS9389-43	.231	MS9389-68	.417	MS9389-93	.933
1.250	MS9389-19	.108	MS9389-44	.243	MS9389-69	.439	MS9389-94	.982
1.312	MS9389-20	.113	MS9389-45	.255	MS9389-70	.460	MS9389-95	1.031
1.375	MS9389-21	.119	MS9389-46	.267	MS9389-71	.483	MS9389-96	1.080
1.438	MS9389-22	.124	MS9389-47	.279	MS9389-72	.505	MS9389-97	1.130
1.500	MS9389-23	.130	MS9389-48	.291	MS9389-73	.526	MS9389-98	1.178

1. PINS TO BE STRAIGHT WITHIN .001 FOR LENGTHS .125 TO 1.000 AND .002 FOR LENGTHS 1.062 TO 1.500.
2. MATERIAL: CORROSION AND HEAT RESISTANT STEEL AMS 5735.
3. IDENTIFICATION: AS 478-37. MANUFACTURER'S IDENTIFICATION REQUIRED.
4. SURFACE ROUGHNESS: AS 291.
5. BREAK SHARP EDGES .003-.015
6. DIMENSIONS IN INCHES.
7. DO NOT USE UNASSIGNED PART NUMBERS.

THIS STANDARD WAS DEVELOPED COOPERATIVELY WITH THE ENGINE AND PROPELLER UTILITY PARTS COMMITTEE OF THE SAE.

P.A. USAP - AFSC	TITLE	MILITARY STANDARD
Other Cust Navy - Wep	PIN, STRAIGHT, HEADLESS - AMS 5735, LOOK	MS9389 (ASG)
PROCUREMENT SPECIFICATION None	SUPERSEDES:	SHEET 1 OF 1

DD FORM 672-1 (Limited reordination)

PREVIOUS EDITIONS OF THIS FORM ARE OBSOLETE

REVISION
APPROVED 1 AUG 61