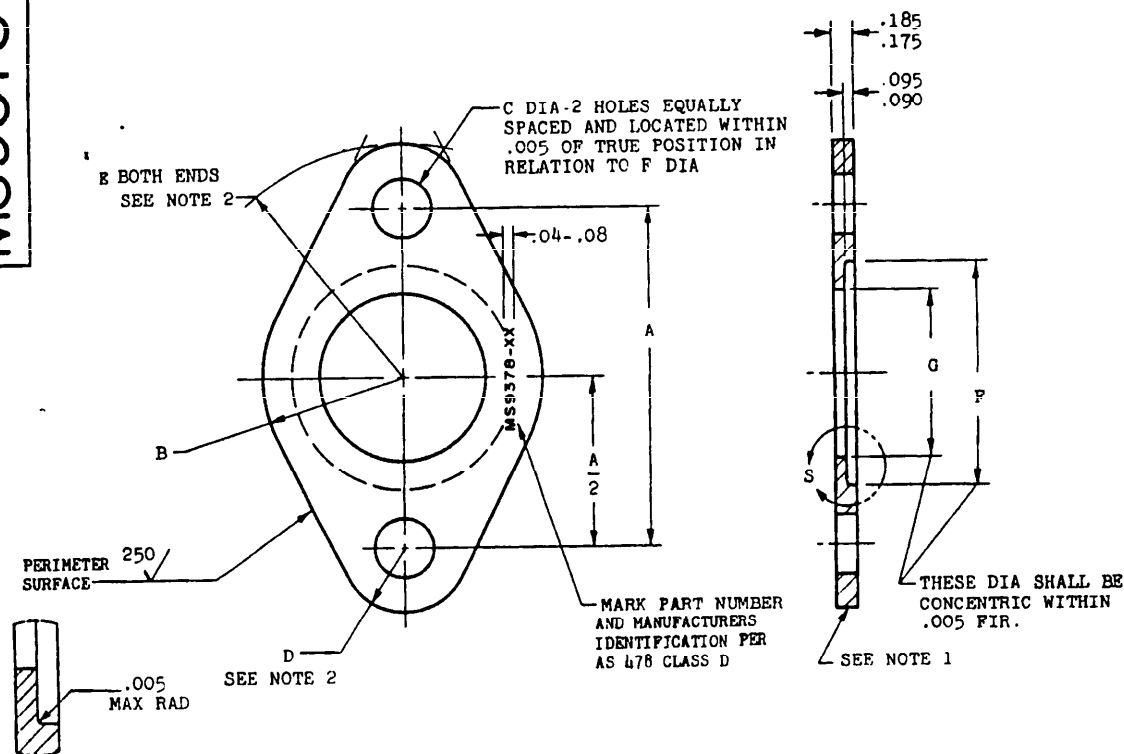


NOTICE.—When Government drawings, specifications, or other data are used for any purpose other than in connection with a definitely related Government procurement operation, the United States Government thereby incurs no responsibility, nor any obligation whatsoever; and the fact that the Government may have furnished, furnished, or in any way supplied the said drawings, specifications, or other data is not to be regarded by implication or otherwise as in any manner licensing the holder or any other person or corporation or conveying any rights or permission to manufacture, use, or sell any patented invention that may in any way be related thereto.

This standard has been approved by the BuRep. (Department of the Navy) and the Department of the USAF and is mandatory for use by that activity. All other military activities are required to employ this standard where suitable.

MS9378(ASG)

FED. SUP CLASS
4730



SECTION AT S
ENLARGED

| ① PART NUMBER | TUBE OD NOMINAL | A BASIC | B RAD +.030 -.000 | C DIA +.005 -.002 | D RAD +.030 -.000 | E RAD +.030 -.000 | F DIA +.005 -.000 | G DIA +.005 -.000 | APPROX WEIGHT LB / EA |
|---------------|-----------------|---------|-------------------------|-------------------------|-------------------------|-------------------------|-------------------------|-------------------------|--------------------------|
| MS9378-04 | .250 | .982 | .390 | .221 | .220 | .711 | .608 | .398 | .03 |
| MS9378-05 | .312 | 1.044 | .422 | .221 | .220 | .742 | .670 | .460 | .03 |
| MS9378-06 | .375 | 1.108 | .500 | .221 | .220 | .774 | .733 | .523 | .03 |
| MS9378-08 | .500 | 1.232 | .531 | .221 | .220 | .836 | .858 | .648 | .04 |
| MS9378-10 | .625 | 1.358 | .609 | .221 | .220 | .899 | .983 | .773 | .04 |

- PERIMETER LIMITS MAY BE EXCEEDED BY FORGING DRAFT ANGLE OF 7° MAXIMUM.
- CORNER RADIUS MAY VARY BETWEEN D AND E.
- MATERIAL: CORROSION RESISTANT STEEL AMS 5645 OR AMS 5510.
- SURFACE ROUGHNESS: AS 291. UNLESS OTHERWISE SPECIFIED: SURFACES TO BE 125 MICROINCHES.
- BREAK SHARP EDGES .003-.015 UNLESS OTHERWISE SPECIFIED.
- DIMENSIONS IN INCHES. UNLESS OTHERWISE SPECIFIED; TOLERANCES; LINEAR DIMENSIONS ±.010.
- TRUE POSITION TOLERANCE SPECIFIED IS FOR MAXIMUM MATERIAL CONDITION.
- DO NOT USE UNASSIGNED PART NUMBERS.
- MS9378-4, -5, -6, AND -8 WERE RENUMBERED TO MS9378-04, -05, -06, AND -08.

①

AS & AMS ARE SAE PUBLICATIONS.

THIS STANDARD WAS DEVELOPED COOPERATIVELY WITH THE ENGINE AND PROPELLER UTILITY PARTS COMMITTEE OF THE SAE.

| | | |
|-----------------------------------|-------------------------------------------------------------------------|---------------------|
| P.A.-USAF - AFSC | TITLE | MILITARY STANDARD |
| Other Cust Navy - Wep | COLLAR, SWIVEL-PILOTED O-RING, TUBE CONNECTION, 2 BOLT, CRS STEEL | MS9378 (ASG) |
| PROCUREMENT SPECIFICATION NONE | SUPERSEDES: | SHEET 1 OF 1 |