

FED SUP CLASS
5340

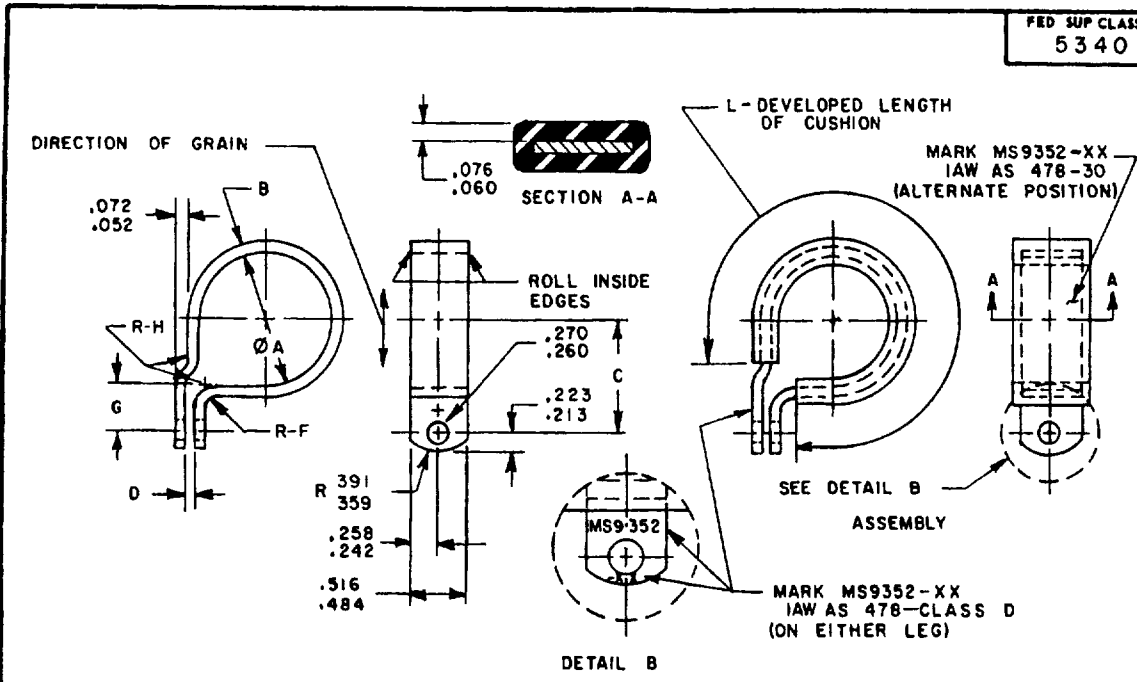


TABLE 1 DASH NUMBERS AND DIMENSIONS

DASH NUMBER	TUBE OUTSIDE DIAMETER HO"	Ø A BASIC	B ± .006	C ± .010	D	F RADIUS ± .010	G ± .010	H RADIUS ± .010	J ± .040 - .000	APPROX WEIGHT LB/100
-01	.125	.250	.031	.457	.125-141	.062	.112	.062	.679	.52
-02	.188	.312	.031	.499	.125-141	.062	.112	.062	.906	.66
-03	.250	.375	.031	.529	.125-141	.062	.112	.062	1.097	.77
-04	.312	.438	.031	.560	.125-141	.062	.112	.062	1.306	.88
-05	.375	.500	.031	.592	.125-141	.062	.112	.062	1.515	.99
-06	.438	.562	.031	.623	.125-141	.062	.112	.062	1.724	1.11
-07	.500	.625	.031	.654	.125-141	.062	.112	.062	1.930	1.22
-08	.562	.688	.031	.752	.125-141	.109	.175	.094	2.092	1.71
-09	.625	.750	.031	.783	.125-141	.109	.175	.094	2.299	1.85
-10	.688	.812	.031	.814	.125-141	.109	.175	.094	2.506	1.99
-11	.750	.875	.031	.845	.125-141	.109	.175	.094	2.721	2.14
-12	.812	.938	.031	.877	.125-141	.109	.175	.094	2.929	2.28
-13	.875	1.000	.031	.909	.125-141	.109	.175	.094	3.136	2.41
-14	.938	1.062	.031	.939	.125-141	.109	.175	.094	3.343	2.55
-15	1.000	1.125	.031	.970	.125-141	.109	.175	.094	3.555	2.69
-16	1.062	1.188	.031	1.002	.125-141	.109	.175	.094	3.769	2.84
-17	1.125	1.250	.031	1.032	.150-172	.125	.400	.125	3.914	3.05
-18	1.188	1.312	.031	1.063	.150-172	.125	.400	.125	4.125	3.20
-19	1.250	1.375	.031	1.094	.150-172	.125	.400	.125	4.339	3.35
-20	1.312	1.438	.031	1.125	.150-172	.125	.400	.125	4.551	3.50
-21	1.375	1.500	.031	1.156	.150-172	.125	.400	.125	4.754	3.65
-22	1.438	1.562	.031	1.187	.150-172	.125	.400	.125	4.960	3.80
-23	1.500	1.625	.031	1.218	.150-172	.125	.400	.125	5.173	3.95
-24	1.562	1.688	.031	1.249	.150-172	.125	.400	.125	5.386	4.10
-25	1.625	1.750	.031	1.280	.150-188	.125	.400	.125	5.585	4.25
-26	1.688	1.812	.031	1.311	.150-188	.125	.400	.125	5.798	4.40
-27	1.750	1.875	.031	1.342	.150-188	.125	.400	.125	6.011	4.55
-28	1.812	1.938	.031	1.373	.150-188	.125	.400	.125	6.223	4.70
-29	1.875	2.000	.031	1.404	.150-188	.125	.400	.125	6.436	4.85
-30	1.938	2.062	.031	1.435	.150-188	.125	.400	.125	6.649	5.00
-31	2.000	2.125	.031	1.466	.150-188	.125	.400	.125	6.862	5.15

ENTIRE STANDARD REVISED

P A NAVY-AS Other Cost AIR FORCE-11	INTERNATIONAL INTEREST	TITLE	MILITARY STANDARD
		CLAMP, LOOP, CUSHIONED, JOGGLED, ALUMINUM, .265 HOLE	MS9352
PROCUREMENT SPECIFICATION NONE	SUPERSEDES:	PAGE	1 OF 2

DISTRIBUTION STATEMENT A Approved for public release; distribution is unlimited
 This military standard is approved for use by all Departments and Agencies of the Department of Defense
 Selection for all new engineering and design applications and for repetitive use shall be made from this document, when applicable
 USER ACTIVITIES
 REVIEWER ACTIVITIES
 DLA-1S

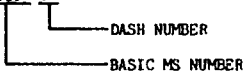
APPROVED 14 JAN 65
 REVISED (A) 21 FEB 1967 (B) 11 JUN 86

FED SUP CLASS
5340

REQUIREMENTS:

1. MATERIAL: CLAMP-ALUMINUM IN ACCORDANCE WITH AMS 4041-79
CUSHION-RUBBER IN ACCORDANCE WITH AMS 3209
2. CLAMP FORM: CLAMP SHALL BE FORMED AS SHOWN. DIMENSION "D" SHALL FALL WITHIN THE SPECIFIED LIMITS WHEN CLAMP IS ASSEMBLED ON A BAR THE DIAMETER OF WHICH IS EQUAL TO THE NOMINAL TUBE OD WITHIN + .001. HOLES SHALL BE IN ALIGNMENT WITHIN .010 AND CLAMP SHALL BE FLAT WITHIN .010 THRU CLAMP WIDTH WHEN ASSEMBLED ON TEST BAR. IN THE FREE POSITION, CLAMP MAY SPRING OPEN PROVIDED THE ABOVE CONDITIONS ARE MET
3. EDGES: REMOVE BURRS AND SHARP EDGES.
4. PART NUMBER THE PART NUMBER SHALL CONSIST OF THE BASIC MS NUMBER FOLLOWED BY A DASH NUMBER FROM TABLE I

EXAMPLE: MS9352-01



MS9352-01 INDICATES - CLAMP, LOOP, CUSHIONED, JOGGLED, ALUMINUM, .265 HOLE,
TUBE OUTSIDE DIAMETER NOMINAL .125, BASIC DIAMETER
.250

NOTES:

1. ALL DIMENSIONS ARE IN INCHES
2. DO NOT USE UNASSIGNED PART NUMBERS
3. IN THE EVENT OF A CONFLICT BETWEEN THE TEXT OF THIS STANDARD AND THE REFERENCES CITED HEREIN, THE TEXT OF THIS STANDARD SHALL TAKE PRECEDENCE
4. REFERENCED GOVERNMENT (OR NONGOVERNMENT) DOCUMENTS OF THE ISSUE LISTED IN THAT ISSUE OF THE DEPARTMENT OF DEFENSE INDEX OF SPECIFICATIONS AND STANDARDS (DODISS) SPECIFIED IN THE SOLICITATION FORM A PART OF THIS STANDARD TO THE EXTENT SPECIFIED HEREIN
5. THIS STANDARD WAS DEVELOPED COOPERATIVELY WITH THE SAE AEROSPACE PROPULSION DIVISION
6. AS AND AMS ARE SAE PUBLICATIONS

USER ACTIVITIES.

REVIEWER ACTIVITIES.
DLA-1S

This military standard is approved for use by all Departments and Agencies of the Department of Defense. Selection for all new engineering and design applications and for repetitive use shall be made from this document, when applicable.

APPROVED 14 JAN 65 REVISED (B) FOR CHANGES SEE PAGE 1 AND 2

P A NAVY-AS Other Cust AIR FORCE-II	INTERNATIONAL INTEREST	TITLE	MILITARY STANDARD
		CLAMP, LOOP, CUSHIONED, JOGGLED, ALUMINUM, .265 HOLE	MS9352
PROCUREMENT SPECIFICATION NONE	SUPERSEDES:	PAGE 2 OF 2	