

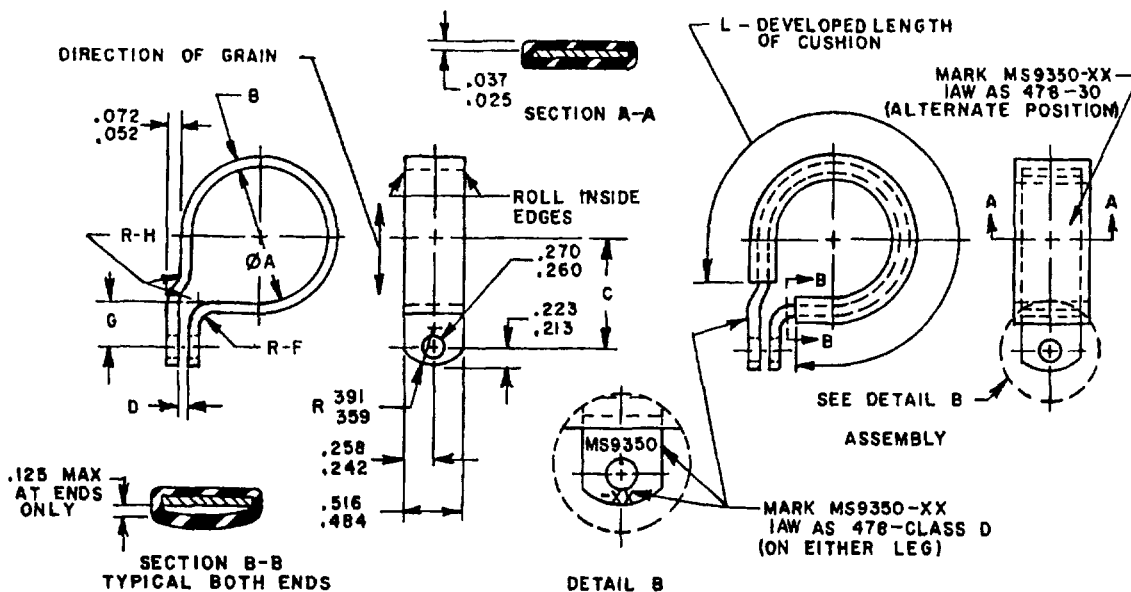
FED SUP CLASS
5 3 4 0

TABLE I. DASH NUMBERS AND DIMENSIONS.

DASH NUMBER	TUBE OUTSIDE DIAMETER NOM	ØA BASIC	B +.000	C +.010	D	F RADIUS +.010	G +.010	H RADIUS +.010	L +.040 -.000	APPROX WEIGHT LB/100
-01	.125	.189	.031	.423	.125-.141	.062	.312	.062	.505	.77
-02	.188	.250	.031	.457	.125-.141	.062	.312	.062	.679	.91
-03	.250	.312	.031	.498	.125-.141	.062	.312	.062	.908	1.08
-04	.312	.375	.031	.529	.125-.141	.062	.312	.062	1.097	1.23
-05	.375	.438	.031	.560	.125-.141	.062	.312	.062	1.306	1.37
-06	.438	.500	.031	.592	.125-.141	.062	.312	.062	1.515	1.52
-07	.500	.562	.031	.623	.125-.141	.062	.312	.062	1.724	1.68
-08	.562	.625	.031	.654	.125-.141	.062	.312	.062	1.930	1.82
-09	.625	.688	.051	.752	.125-.141	.109	.375	.094	2.092	3.01
-10	.688	.750	.051	.783	.125-.141	.109	.375	.094	2.299	3.22
-11	.750	.812	.051	.814	.125-.141	.109	.375	.094	2.506	3.43
-12	.812	.875	.051	.845	.125-.141	.109	.375	.094	2.721	3.65
-13	.875	.938	.051	.877	.125-.141	.109	.375	.094	2.929	3.87
-14	.938	1.000	.051	.908	.125-.141	.109	.375	.094	3.136	4.07
-15	1.000	1.062	.051	.939	.125-.141	.109	.375	.094	3.343	4.29
-16	1.062	1.125	.051	.970	.125-.141	.109	.375	.094	3.555	4.50
-17	1.125	1.188	.051	1.002	.125-.141	.109	.375	.094	3.769	4.72
-18	1.188	1.250	.064	1.062	.150-.172	.125	.400	.125	3.914	5.96
-19	1.250	1.312	.064	1.093	.150-.172	.125	.400	.125	4.125	6.22
-20	1.312	1.375	.064	1.125	.150-.172	.125	.400	.125	4.339	6.48
-21	1.375	1.438	.064	1.156	.150-.172	.125	.400	.125	4.551	6.73
-22	1.438	1.500	.064	1.188	.150-.172	.125	.400	.125	4.754	6.99
-23	1.500	1.562	.064	1.219	.150-.172	.125	.400	.125	5.066	7.36
-24	1.562	1.625	.064	1.250	.150-.172	.125	.400	.125	5.173	7.49
-25	1.625	1.688	.064	1.281	.150-.172	.125	.400	.125	5.386	7.75
-26	1.688	1.750	.064	1.312	.150-.188	.125	.400	.125	5.585	7.98
-27	1.750	1.812	.064	1.344	.150-.188	.125	.400	.125	5.798	8.24
-28	1.812	1.875	.064	1.375	.150-.188	.125	.400	.125	6.011	8.50
-29	1.875	1.938	.064	1.406	.150-.188	.125	.400	.125	6.223	8.77
-30	1.938	2.000	.064	1.438	.150-.188	.125	.400	.125	6.436	9.02
-31	2.000	2.062	.064	1.469	.150-.188	.125	.400	.125	6.643	9.26

(B) ENTIRE STANDARD REVISED

P A NAVY-AS Other Cost AIR FORCE-II	INTERNATIONAL INTEREST	TITLE CLAMP, LOOP, CUSHIONED, JOGGLED, CRES, .265 HOLE	MILITARY STANDARD	
			MS9350	
PROCUREMENT SPECIFICATION NONE	SUPERSEDES:	PAGE 1 OF 2		

DD FORM 672-1 (COORDINATED)

PREVIOUS EDITIONS OF THIS FORM ARE OBSOLETE

5340-1733

USER ACTIVITIES

REVIEWER ACTIVITIES
DLA - IS

DISTRIBUTION STATEMENT A Approved for public release; distribution is unlimited

This military standard is approved for use by all Departments and Agencies of the Department of Defense. Selection for all new engineering and design applications and for repetitive use shall be made from this document, when applicable.

AMSC N/A

APPROVED 14 JAN 65 REVISED (A) 29 FEB 68 (B) 11 JUN 86

USER ACTIVITIES:

REVIEWER ACTIVITIES:
DLA - IS

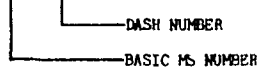
This military standard is approved for use by all Departments and Agencies of the Department of Defense. Selection for all new engineering and design applications and for repetitive use shall be made from this document, when applicable.

FED SUP CLASS
5 3 4 0

REQUIREMENTS:

1. MATERIAL: CLAMP-CORROSION RESISTANT STEEL IN ACCORDANCE WITH AMS 5510.
CUSHION-POLYTETRAFLUOROETHYLENE IN ACCORDANCE WITH AMS 3651.
2. CLAMP FORM: CLAMP SHALL BE FORMED AS SHOWN. DIMENSION "D" SHALL FALL WITHIN THE SPECIFIED LIMITS WHEN CLAMP IS ASSEMBLED ON A BAR THE DIAMETER OF WHICH IS EQUAL TO THE NOMINAL TUBE OD WITHIN $\pm .001$. HOLES SHALL BE IN ALIGNMENT WITHIN $\pm .010$ AND CLAMP SHALL BE FLAT WITHIN $\pm .010$ THRU CLAMP WIDTH WHEN ASSEMBLED ON TEST BAR. IN THE FREE POSITION, CLAMP MAY SPRING OPEN PROVIDED THE ABOVE CONDITIONS ARE MET.
3. EDGES: REMOVE BURRS AND SHARP EDGES.
4. PART NUMBER: THE PART NUMBER SHALL CONSIST OF THE BASIC MS NUMBER FOLLOWED BY A DASH NUMBER FROM TABLE I

EXAMPLE: MS9350-01

MS9350-01 INDICATES - CLAMP, LOOP, CUSHIONED, JOGGLED, CRES, .265 HOLE, TUBE OUTSIDE
DIAMETER NOMINAL 125, BASIC DIAMETER 188

NOTES

1. ALL DIMENSIONS ARE IN INCHES.
2. DO NOT USE UNASSIGNED PART NUMBERS.
3. IN THE EVENT OF A CONFLICT BETWEEN THE TEXT OF THIS STANDARD AND THE REFERENCES CITED HEREIN, THE TEXT OF THIS STANDARD SHALL TAKE PRECEDENCE.
4. REFERENCED GOVERNMENT (OR NONGOVERNMENT) DOCUMENTS OF THE ISSUE LISTED IN THAT ISSUE OF THE DEPARTMENT OF DEFENSE INDEX OF SPECIFICATIONS AND STANDARDS (DODISS) SPECIFIED IN THE SOLICITATION FORM A PART OF THIS STANDARD TO THE EXTENT SPECIFIED HEREIN.
5. THIS STANDARD WAS DEVELOPED COOPERATIVELY WITH THE SAE AEROSPACE PROPULSION DIVISION
6. AS AND AMS ARE SAE PUBLICATIONS

APPROVED 14 JAN 65 REVISED ⑥ FOR CHANGES SEE PAGE 1 AND 2

P A NAVY-AS Other Cost AIR FORCE- II	INTERNATIONAL INTEREST	TITLE CLAMP, LOOP, CUSHIONED, JOGGLED, CRES, .265 HOLE	MILITARY STANDARD MS9350
PROCUREMENT SPECIFICATION NONE	SUPERSEDES:	PAGE 2 OF 2	